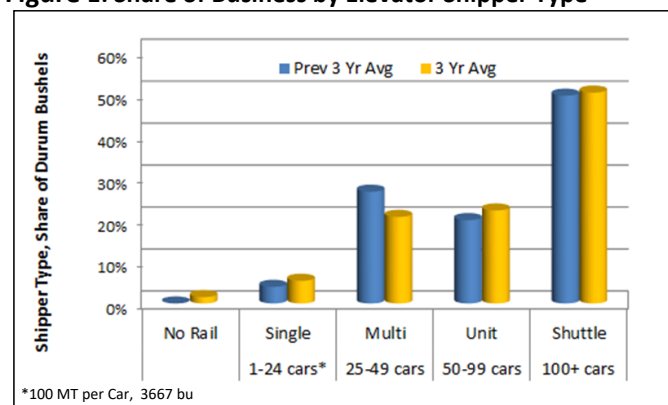


**N.D. Durum** production is around 37 million bushels (1MMT) annually. Approximately 60% of land used in durum production in the United States is located in North Dakota, followed by Montana, Arizona, and California (ND Wheat Commission).

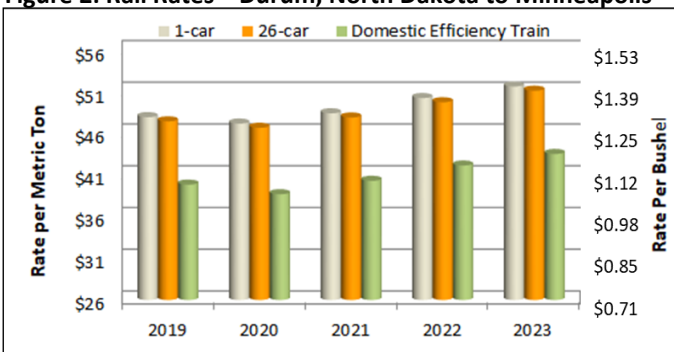
Logistical data presented in this report reviews trends associated with the movement of durum from North Dakota elevators to markets. Figure 1 shows a continued trend toward larger rail facilities in the durum market. Shuttle facilities' share during the most recent 3-year time frame was 50% followed by multi (27%) and unit (22%) train facilities. Rail rates held steady for all train types for the recent 5-year time period, although a slight increase in rates for DETs is shown in 2023.

**Figure 1: Share of Business by Elevator Shipper Type**



Source: ND Department of Agriculture Grain Movement Data

**Figure 2: Rail Rates—Durum, North Dakota to Minneapolis**



### Rail Market Shares

Burlington Northern Santa Fe (BNSF\*) and Canadian Pacific (CP\*\*) are the two major railroads providing service to North Dakota. Market share trends for these two rail roads, as well as trucks, are shown in Figure 4. BNSF continues to hold the largest share, more than 50% in the last 10-years. Twelve percent of durum shipments went by CP in the 2022-23 crop year. Durum shipped via truck has shown some fluctuation, but is currently at 25%.

\*Includes Red River Valley & Western (RRVW)

\*\*Includes Dakota Missouri Valley & Western (DMVW), and Northern Plains Rail (NPR)

**Markets** Durum is used primarily for pasta products. In the United States, pasta consumption amounts to 20 lbs. per capita every year (North Dakota Wheat Commission). Export demand is based in Europe, North Africa, and Latin America, where durum is used in pasta, bread, and couscous.

Destination data (Figure 3) reveal that durum from North Dakota elevators moved in largest share, 35%, to ND processors in 2022-23. This was followed by Other at 23% and both Midland/Gulf and WI/Other MN at 18%. WI/Other MN and Midland shipments typically move beyond the gateway to U.S. domestic millers.

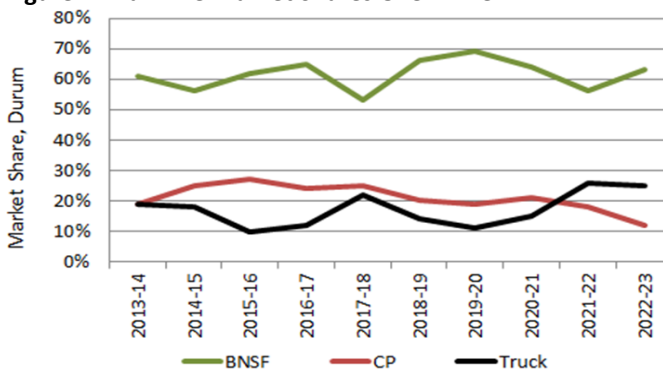
Crop reporting district (CRD) origin detail is provided on page 2, along with specifics on markets and export points.

**Figure 3: Destination for Durum Originating from ND Elevators**

	Duluth	WI/Other MN	Midland & Gulf	PNW	ND	Other	Total
Previous							
5 Yr Avg	23%	24%	19%	4%	17%	13%	27,386
2018-19	30%	26%	8%	4%	19%	13%	25,060
2019-20	46%	21%	6%	1%	18%	12%	31,744
2020-21	22%	27%	15%	1%	18%	18%	22,953
2021-22	7%	23%	19%	0%	29%	23%	22,375
2022-23	6%	18%	18%	0%	35%	23%	21,107

WI/Other MN includes Minneapolis, southeastern Minnesota and Chicago gateway  
Midland & Gulf includes states west of the Mississippi River not in any other column: MO, AR, LA, KS, OK, TX, MT, WY, CO, NM, AZ, NV, CA  
Other includes other states primarily east of Chicago, Canada, Mexico, and unknown

**Figure 4: Rail Line Market Shares Over Time**



**Destinations for Durum Shipments from ND CRD's**  
(1000 Bushels)\*\*

CRD 1 - Northwest								CRD 2 - North Central							
	Duluth	MN/WI	Midland	PNW	ND	Other	Total		Duluth	MN/WI	Midland	PNW	ND	Other	Total
Previous 5 Yr Avg	28%	21%	25%	5%	15%	6%	18,384	Previous 5 Yr Avg	14%	23%	4%	1%	49%	8%	810
2018-19	38%	21%	10%	5%	18%	8%	18,117	2018-19	7%	17%	9%	0%	66%	1%	427
2019-20	64%	11%	4%	1%	17%	4%	20,354	2019-20	0%	32%	8%	4%	47%	10%	592
2020-21	30%	31%	1%	0%	15%	9%	15,102	2020-21	0%	21%	0%	0%	79%	0%	378
2021-22	7%	20%	21%	0%	30%	23%	16,433	2021-22	13%	2%	0%	0%	81%	3%	286
2022-23	8%	17%	24%	0%	35%	16%	14,845	2022-23	0%	0%	0%	0%	100%	0%	140

CRD 3 - Northeast								CRD 4 - West Central							
	Duluth	MN/WI	Midland	PNW	ND	Other	Total		Duluth	MN/WI	Midland	PNW	ND	Other	Total
Previous 5 Yr Avg	21%	13%	2%	0%	47%	16%	700	Previous 5 Yr Avg	1%	17%	11%	0%	21%	51%	1,134
2018-19	0%	29%	10%	0%	43%	18%	1,079	2018-19	16%	28%	3%	0%	21%	32%	898
2019-20	14%	5%	5%	2%	73%	0%	814	2019-20	0%	20%	7%	0%	14%	60%	1,625
2020-21	0%	0%	0%	0%	99%	0%	544	2020-21	0%	29%	0%	0%	0%	71%	701
2021-22	18%	21%	0%	0%	39%	22%	1,738	2021-22	0%	93%	1%	0%	7%	0%	472
2022-23	10%	10%	0%	0%	78%	1%	859	2022-23	0%	100%	0%	0%	0%	0%	93

CRD 5 - Central								CRD 6 - East Central							
	Duluth	MN/WI	Midland	PNW	ND	Other	Total		Duluth	MN/WI	Midland	PNW	ND	Other	Total
Previous 5 Yr Avg	3%	3%	2%	0%	24%	67%	1,128	Previous 5 Yr Avg	1%	58%	0%	0%	1%	0%	27
2018-19	2%	0%	0%	0%	39%	59%	1,004	2018-19	0%	98%	0%	0%	2%	0%	358
2019-20	0%	46%	0%	3%	25%	26%	943	2019-20	0%	100%	0%	0%	0%	0%	243
2020-21	0%	24%	0%	0%	61%	14%	1,339	2020-21	0%	10%	0%	0%	90%	0%	27
2021-22	0%	10%	0%	0%	80%	10%	686	2021-22	0%	0%	0%	0%	0%	0%	0
2022-23	0%	5%	0%	0%	87%	8%	821	2022-23	0%	0%	0%	0%	0%	0%	0

CRD 7 - Southwest								CRD 8 - South Central							
	Duluth	MN/WI	Midland	PNW	ND	Other	Total		Duluth	MN/WI	Midland	PNW	ND	Other	Total
Previous 5 Yr Avg	20%	48%	8%	1%	6%	17%	4,642	Previous 5 Yr Avg	0%	7%	0%	0%	73%	0%	31
2018-19	13%	50%	5%	2%	3%	26%	3,177	2018-19	0%	0%	0%	0%	0%	0%	0
2019-20	20%	42%	15%	0%	1%	23%	7,154	2019-20	0%	0%	0%	0%	0%	0%	0
2020-21	13%	17%	26%	2%	2%	42%	4,862	2020-21	0%	0%	0%	0%	0%	0%	0
2021-22	0%	33%	29%	0%	4%	34%	2,759	2021-22	0%	0%	0%	0%	0%	0%	0
2022-23	2%	17%	7%	0%	17%	58%	3,949	2022-23	0%	0%	0%	0%	0%	0%	0

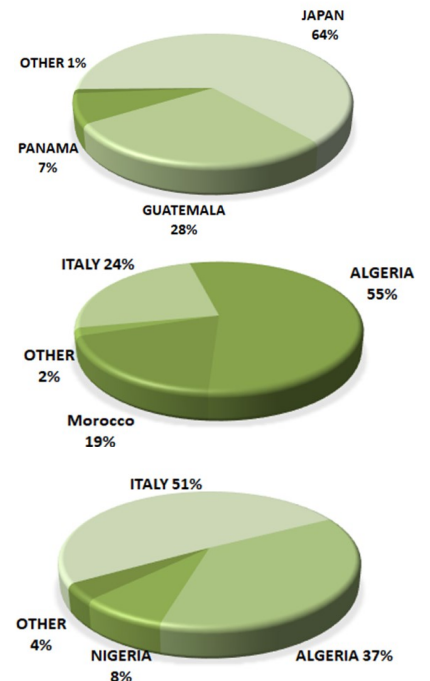
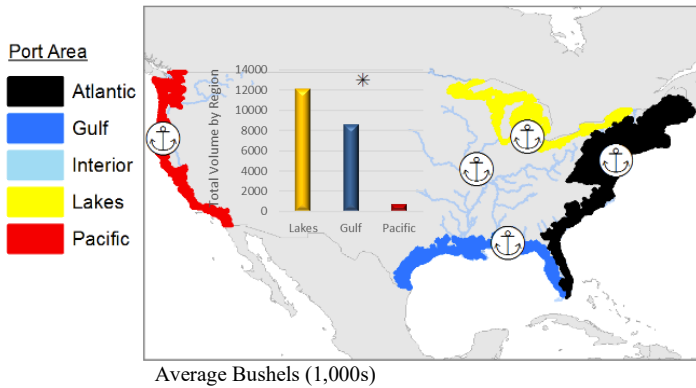
  

CRD 9 - Southeast							
	Duluth	MN/WI	Midland	PNW	ND	Other	Total
Previous 5 Yr Avg	3%	57%	0%	0%	1%	18%	130
2018-19	0%	0%	0%	0%	0%	0%	0
2019-20	0%	92%	0%	0%	8%	0%	19
2020-21	0%	0%	0%	0%	0%	0%	0
2021-22	0%	0%	0%	0%	0%	0%	0
2022-23	0%	100%	0%	0%	0%	0%	400

\*\*One metric ton = 36.74 Bushels

Patterns and methods of shipping durum per the Annual North Dakota Elevator Marketing Report and the North Dakota Grain And Oilseed Transportation Statistics report. The complete reports, CRD map, and additional market information are available at <http://www.ugpti.org/resources/grain/>.

**DURUM EXPORT BY REGION AND PORT AREA**  
**RECENT 3-YEAR AVERAGE**



Source: U.S. Department of Agriculture

North Dakota Wheat Commission (N.D.) Buyers and Processors. Retrieved from <http://www.ndwheat.com/buyers/>

The content of this report reflects the views of the authors, who are responsible for the facts and accuracy of the information presented. This document is disseminated under the sponsorship of the North Dakota Wheat Commission.

NDSU does not discriminate in its programs and activities on the basis of age, color, gender expression/identity, genetic information, marital status, national origin, participation in lawful off-campus activity, physical or mental disability, pregnancy, public assistance status, race, religion, sex, sexual orientation, spousal relationship to current employee, or veteran status, as applicable. Direct inquiries to Vice Provost for Title IX/ADA Coordinator, Old Main 201, NDSU Main Campus, 701-231-7708, [ndsueoaa@ndsu.edu](mailto:ndsueoaa@ndsu.edu).

For more information contact:  
[ndsueoaa@ndsu.edu](mailto:ndsueoaa@ndsu.edu)  
 (701) 231-7767  
 NDSU Dept 2880 • P.O. Box 6050  
 Fargo, ND • 58108-6050