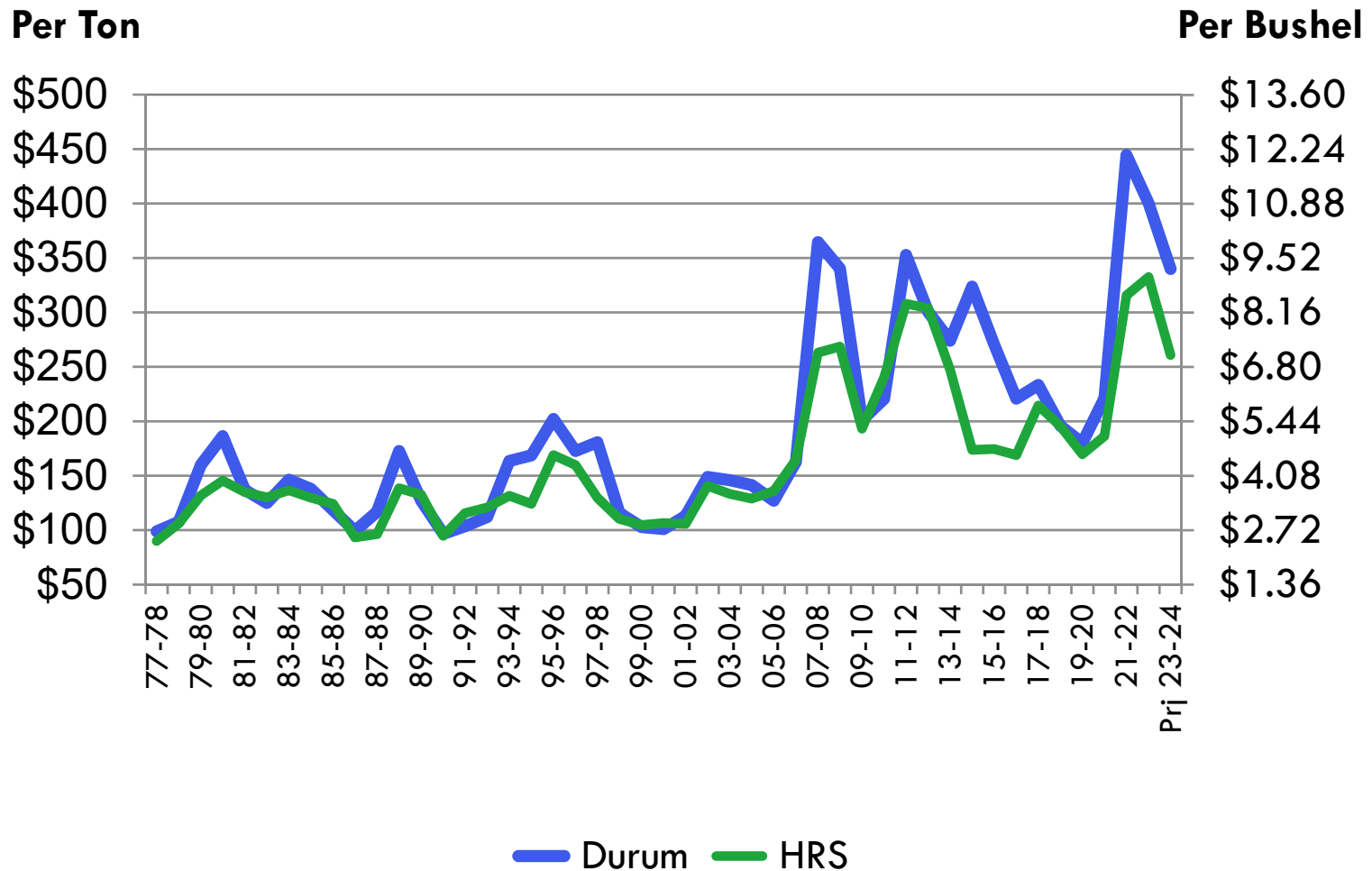


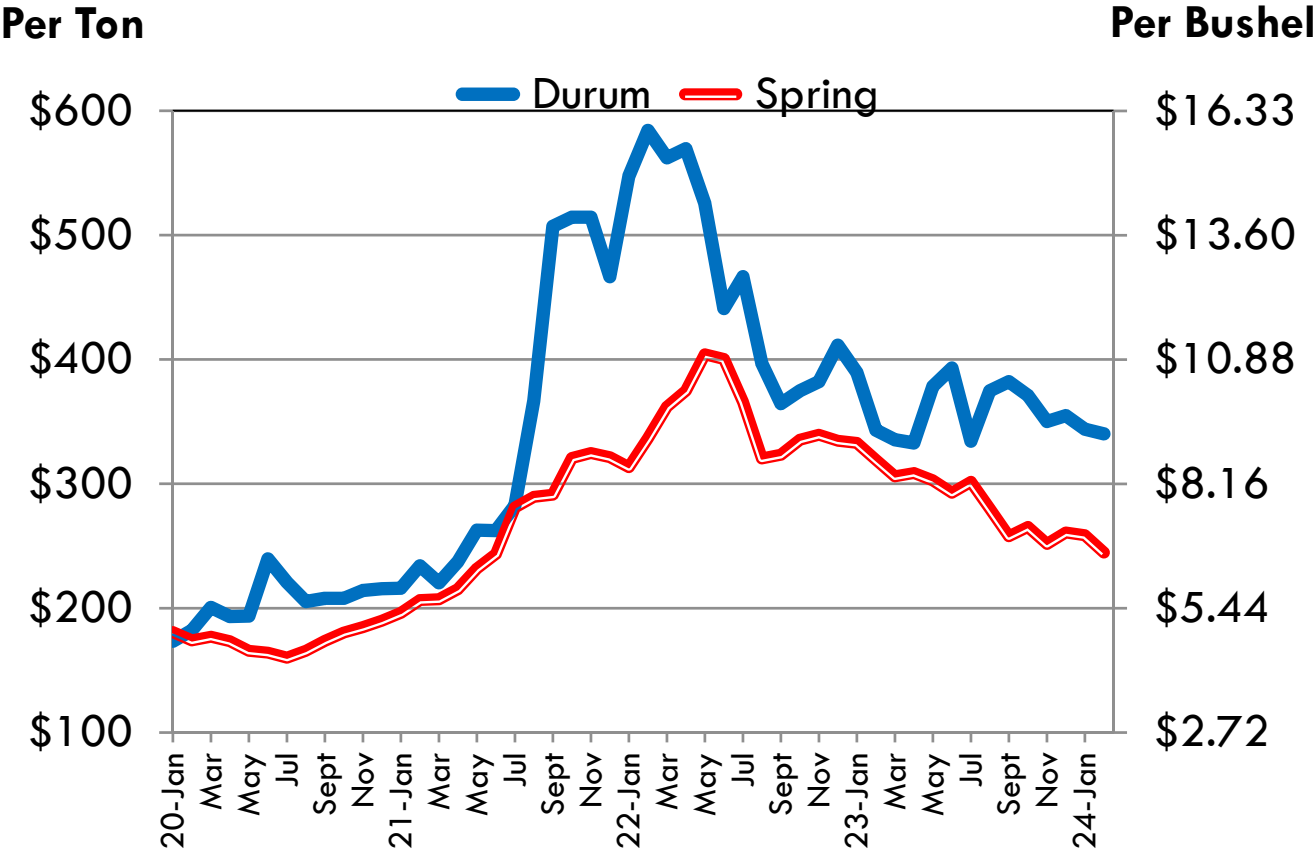
# U.S. AVERAGE FARM PRICES (Long Term)



Source: USDA, Annual Price Summary

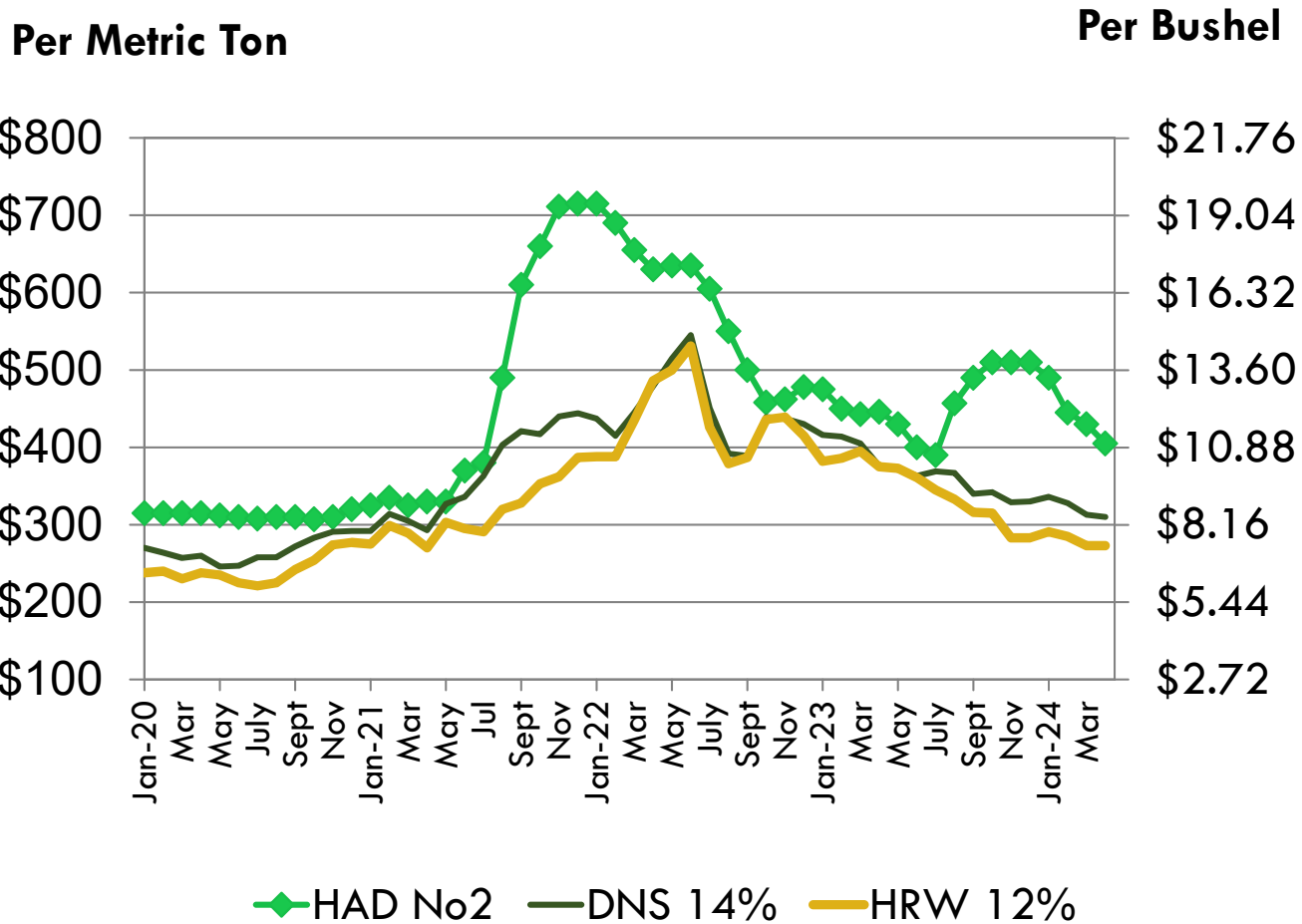
4/11/24

# U.S. AVERAGE FARM PRICES



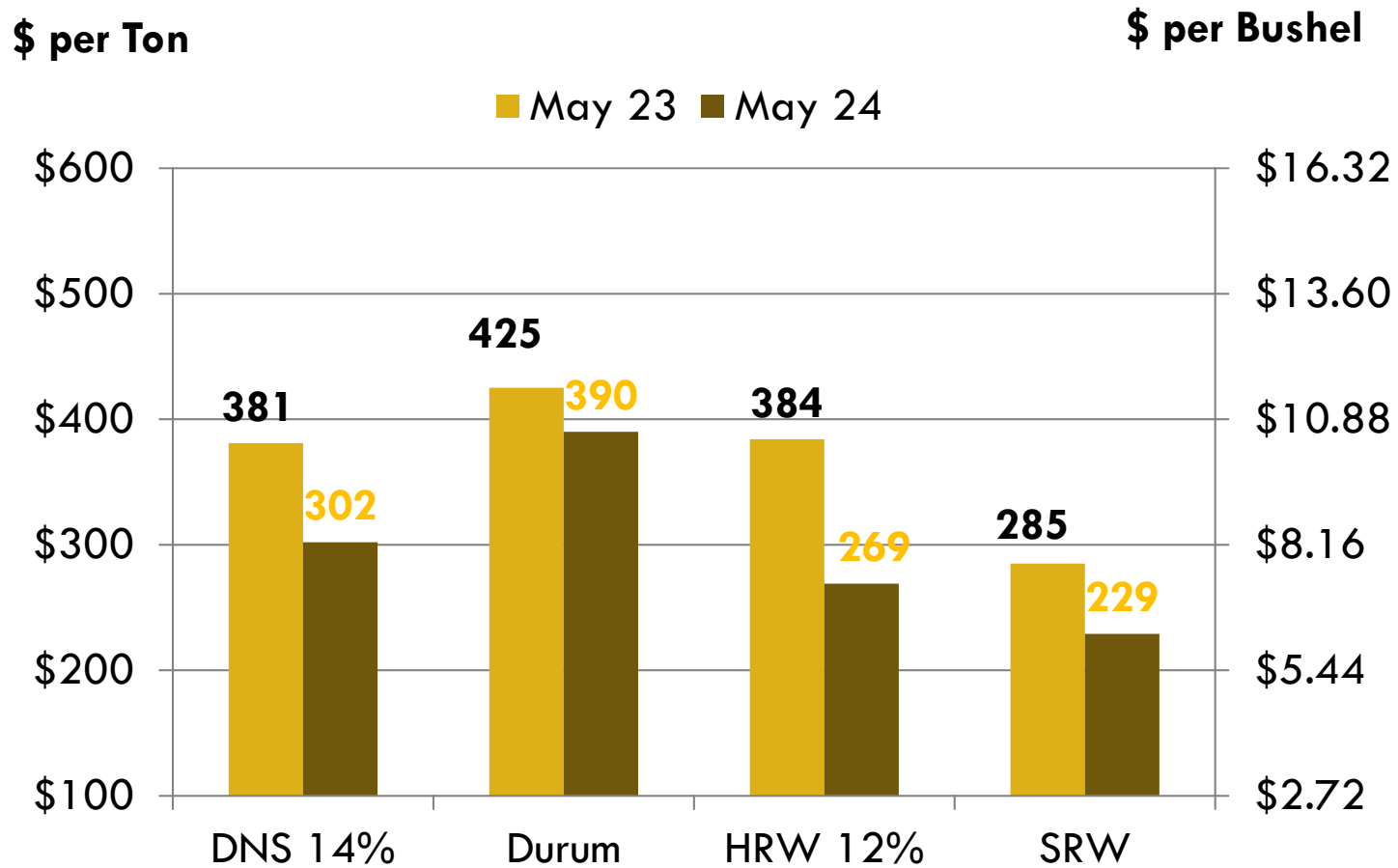
Source: USDA, Annual Price Summary  
3/28/2024

# PRICE TRENDS AT GULF



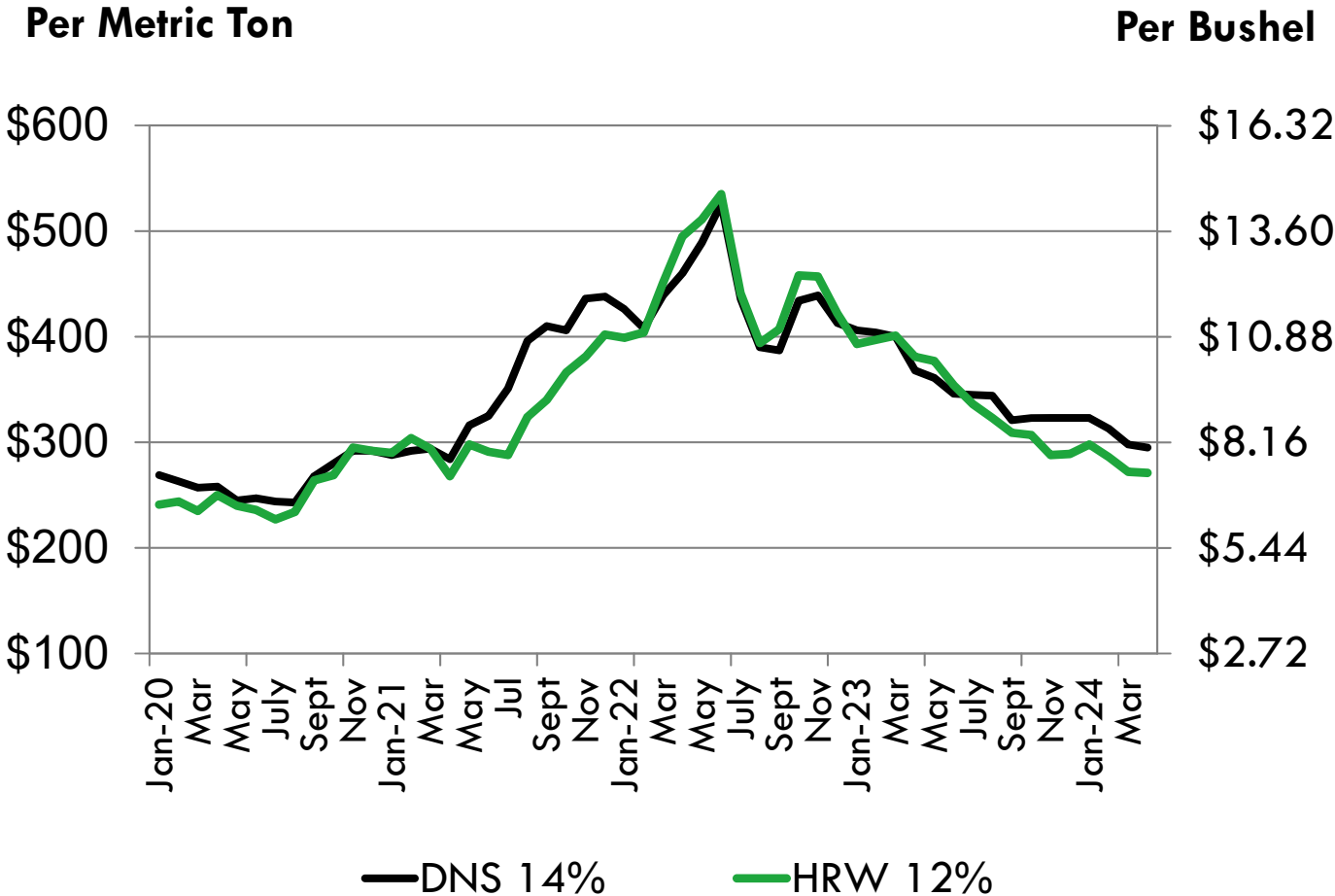
Source: USDA, Annual Price Summary  
4/11/24

# U.S. WHEAT PRICE CHANGE AT THE GULF



4/11/24

# PRICE TRENDS AT THE PNW

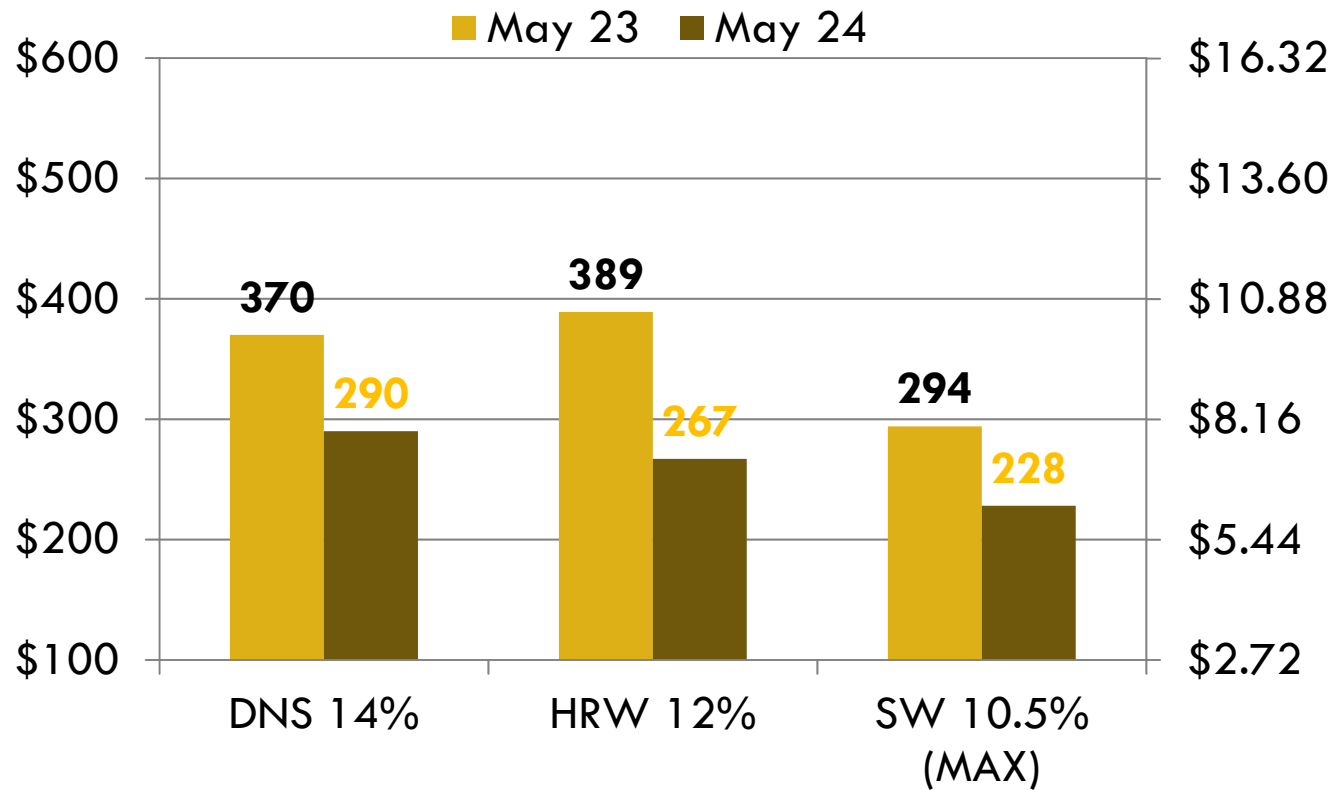


Source: USDA, Annual Price Summary  
4/11/24

# U.S. WHEAT PRICE CHANGE AT THE PNW

\$ per Ton

\$ per Bushel

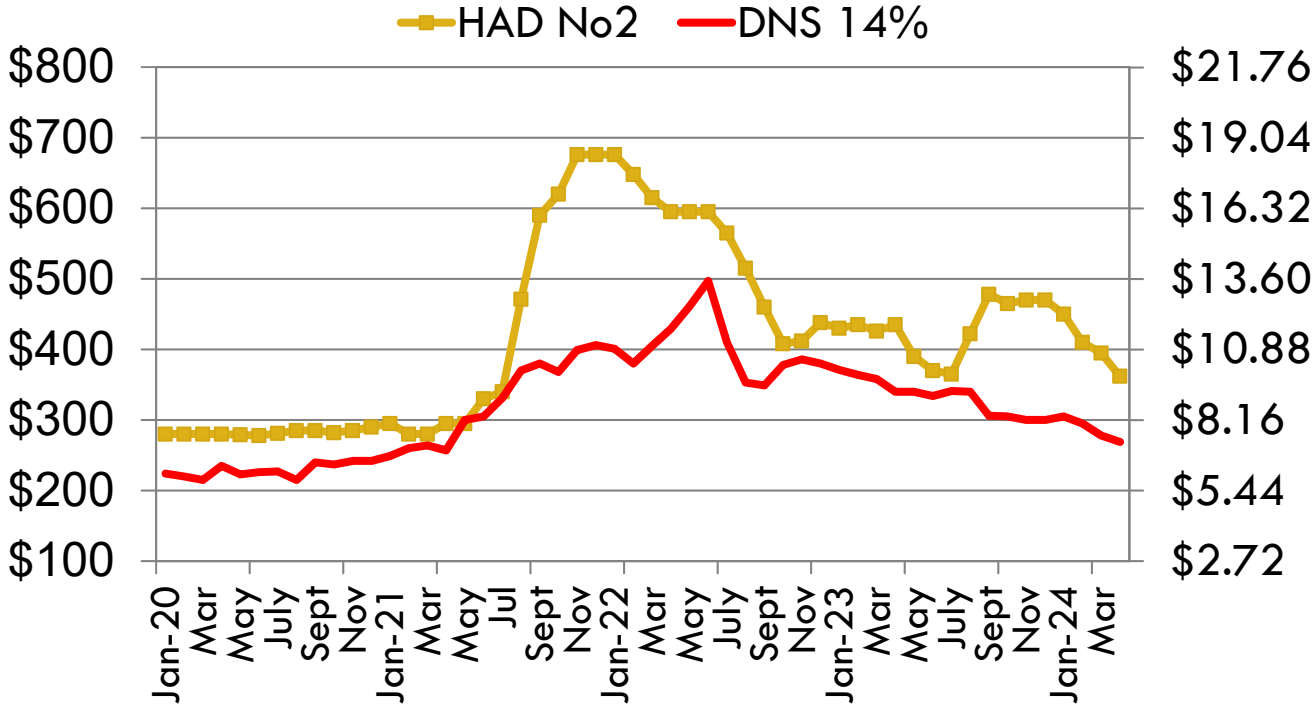


4/11/24

# PRICE TRENDS AT THE LAKES

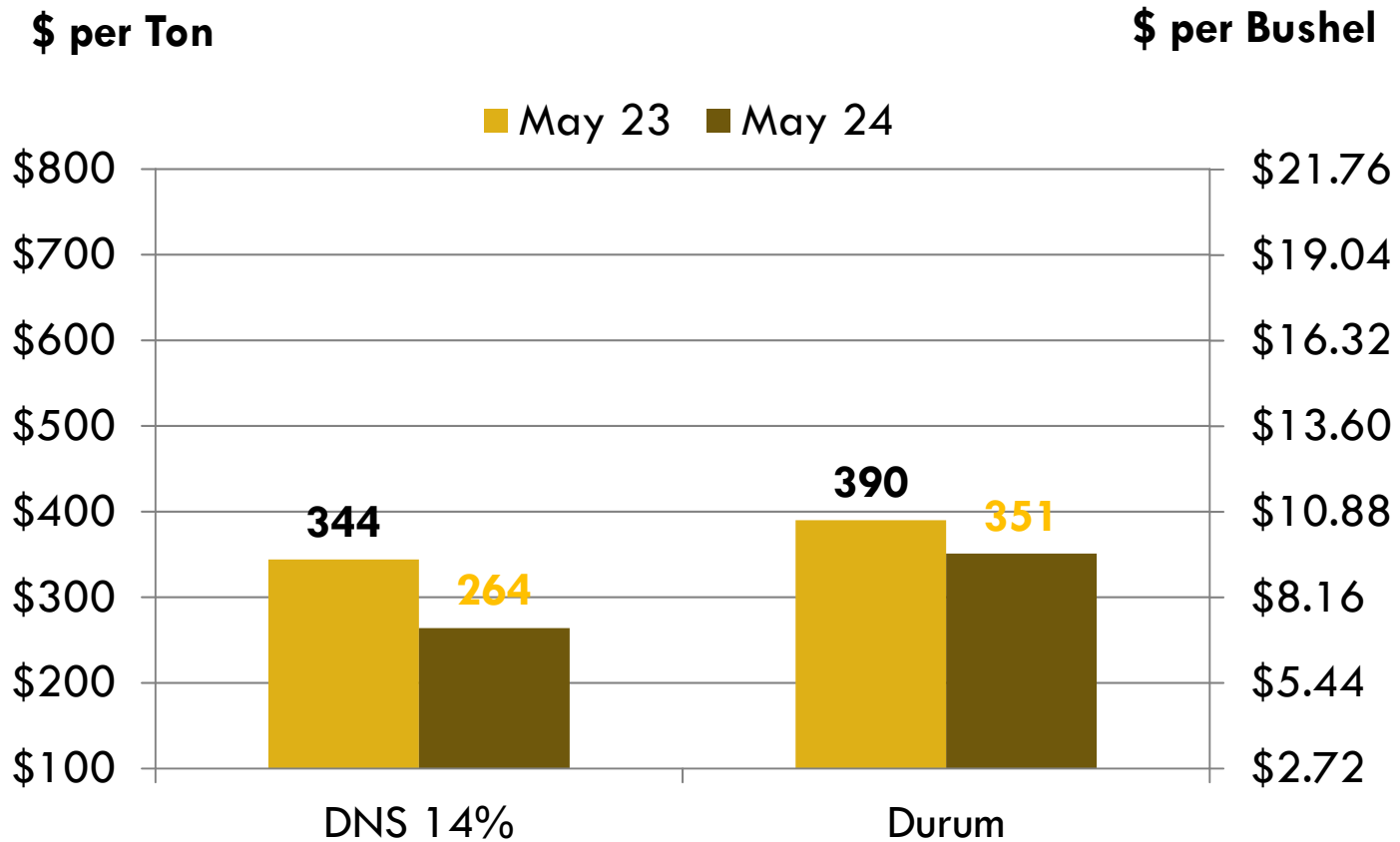
Per Metric Ton

Per Bushel



Source: USDA, Annual Price Summary  
4/11/24

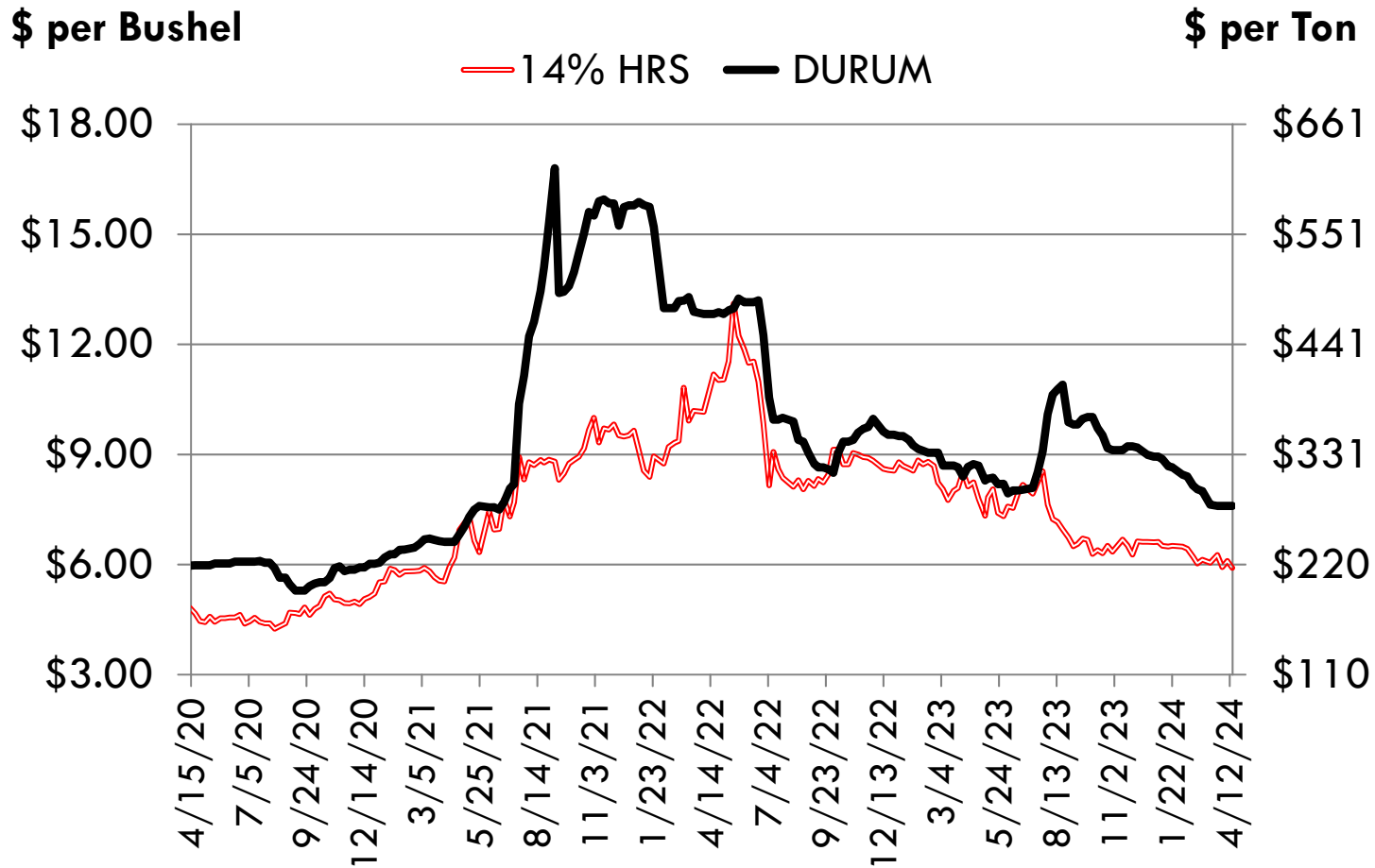
# U.S. WHEAT PRICE CHANGE AT THE LAKES



4/5/24



# Average N.D. Hard Red Spring and Durum Wheat Producer Bids



Source: Elevator weekly prices 4/15/24

# U. S. FUTURES TRENDS

Minneapolis – Hard Red Spring

Kansas City – Hard Red Winter

Chicago – Soft Red Winter – World prices

