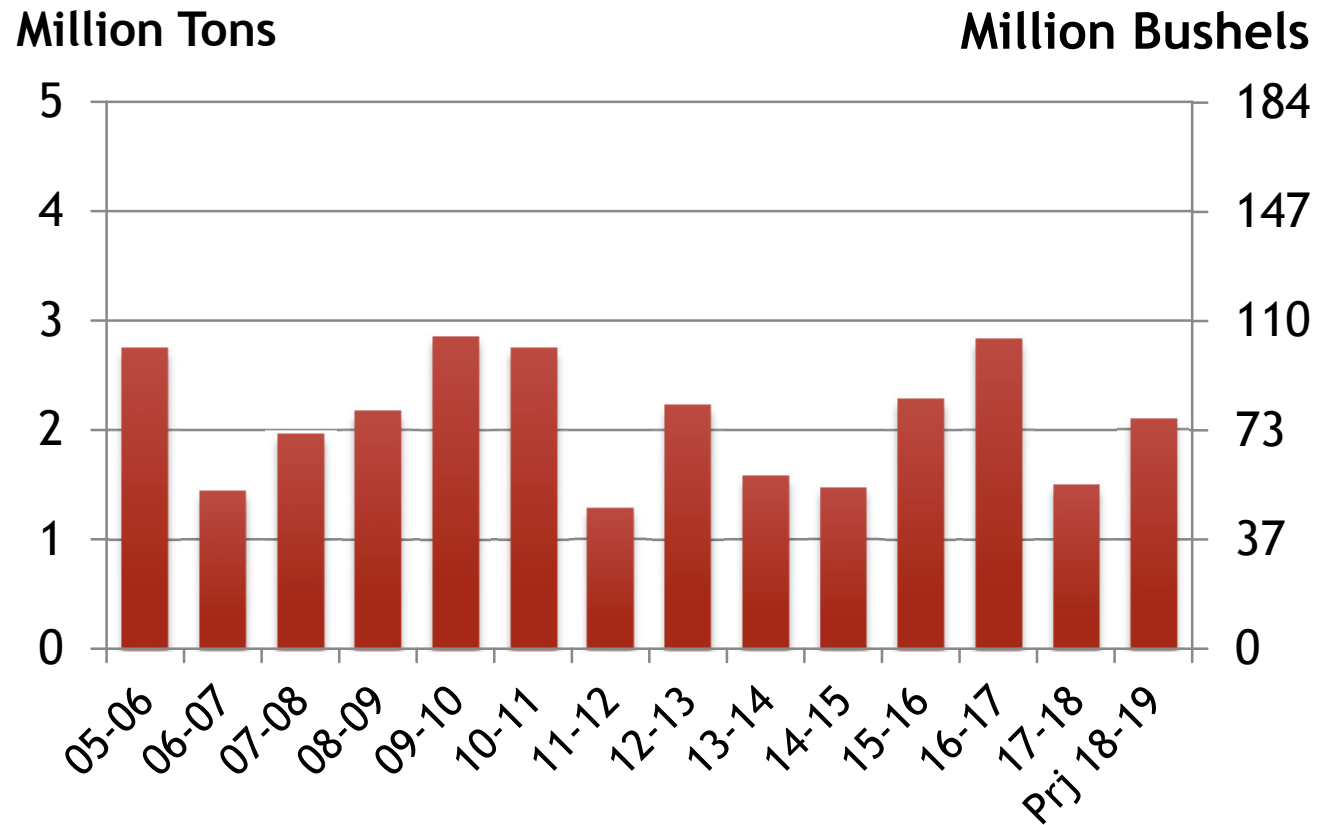
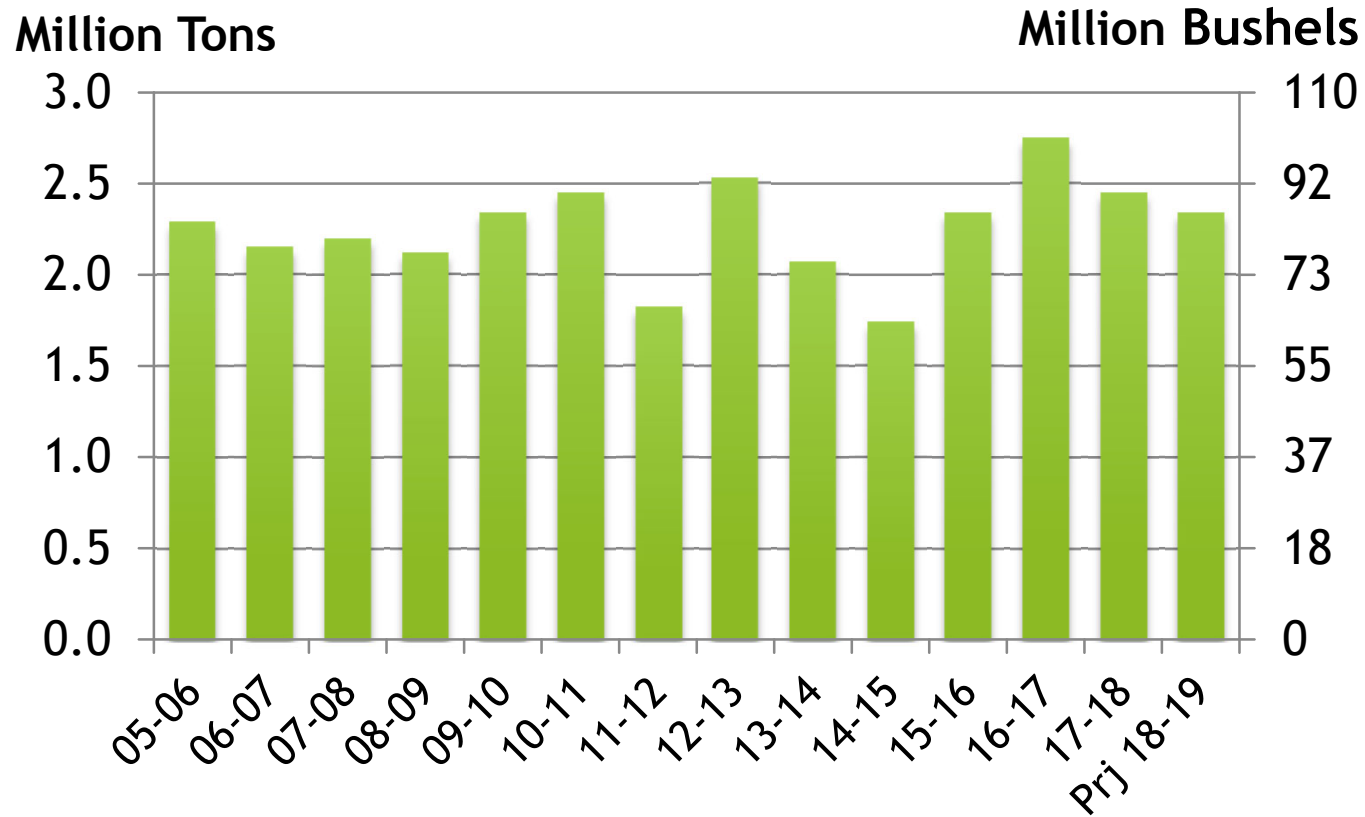


# U.S. DURUM PRODUCTION



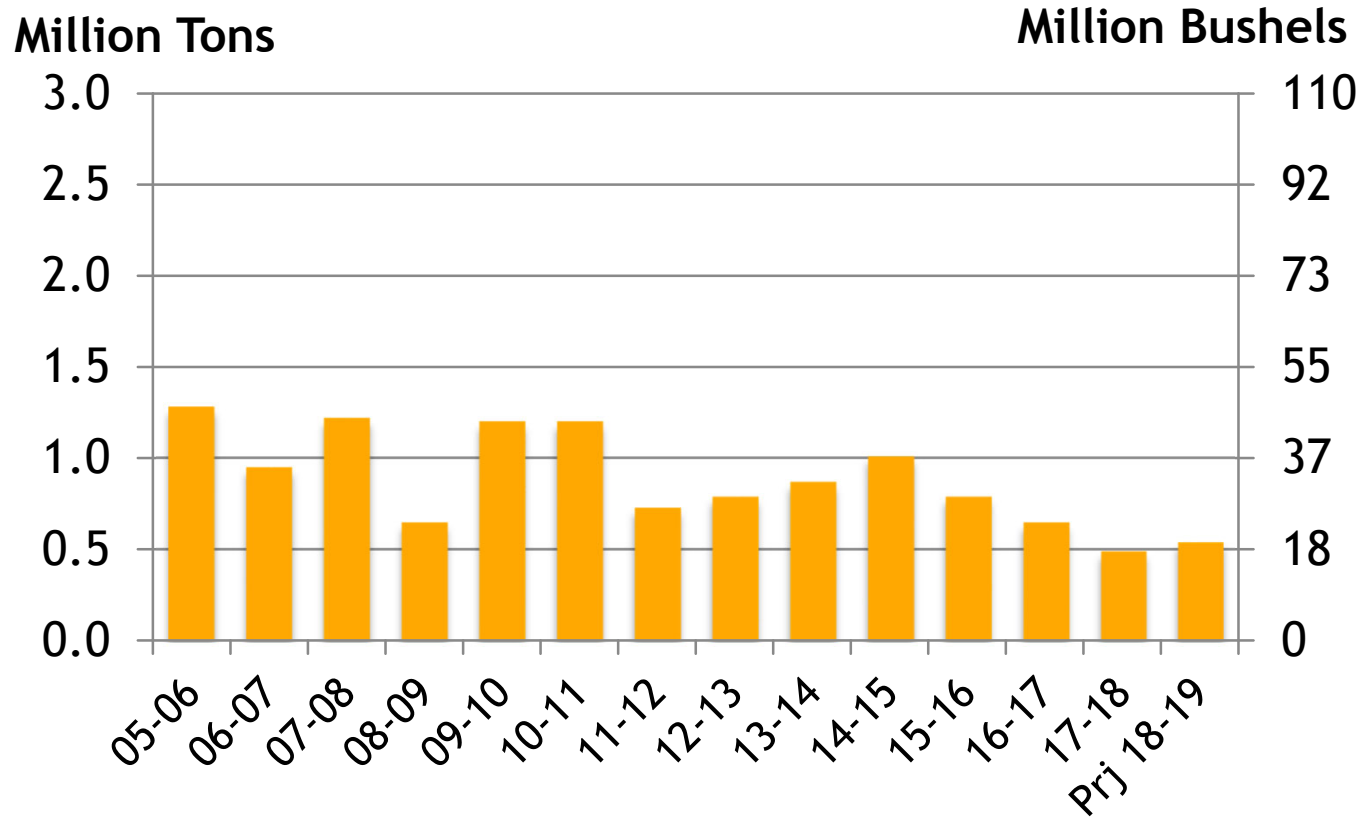
Source: USDA May 2019  
Xldata/both/S&D prod, consump, carryover

# U.S. DURUM DOMESTIC USE



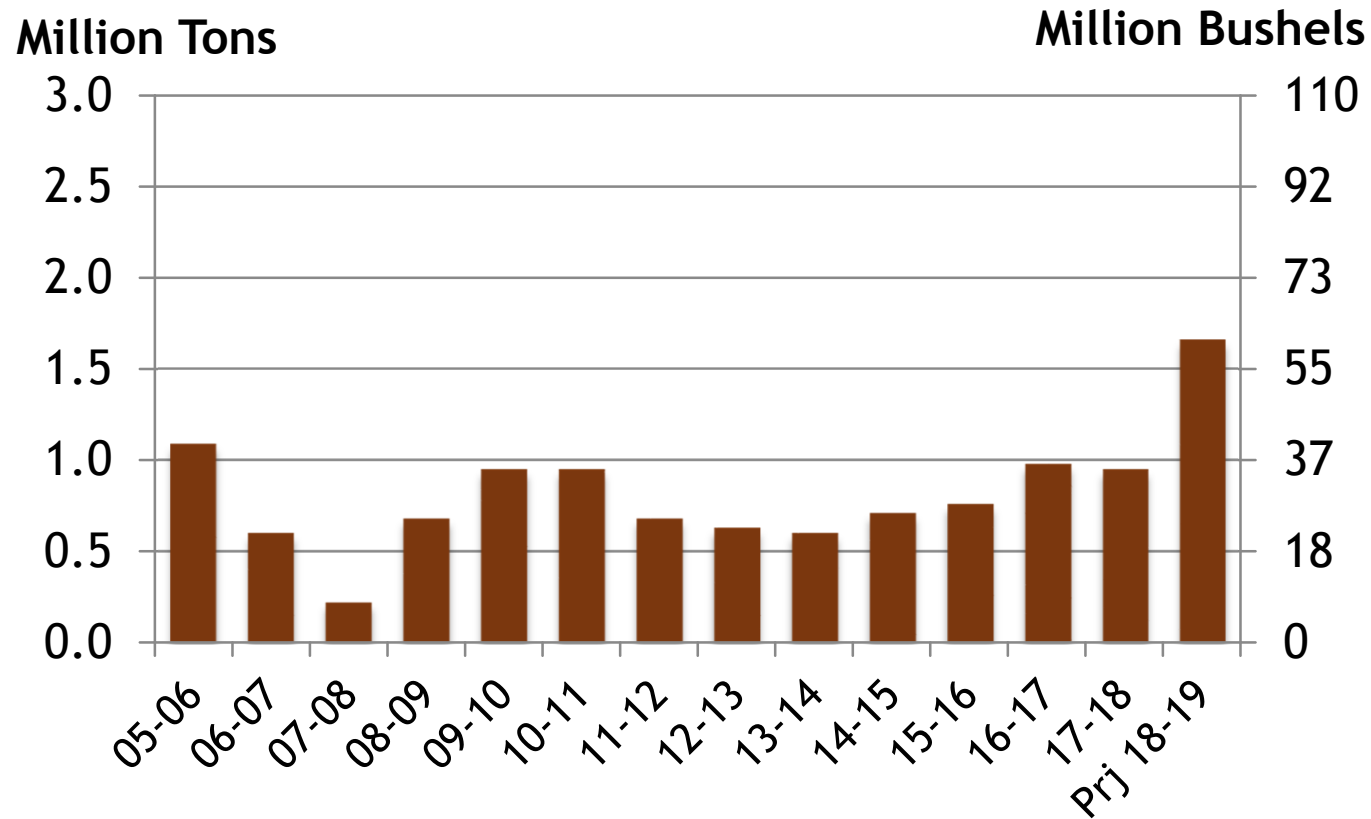
Source: USDA May 2019  
Xldata/both/S&D prod, consump, carryover

# U.S. DURUM EXPORTS



Source: USDA May 2019  
Xldata/both/S&D prod, consump, carryover

# U.S. DURUM STOCKS



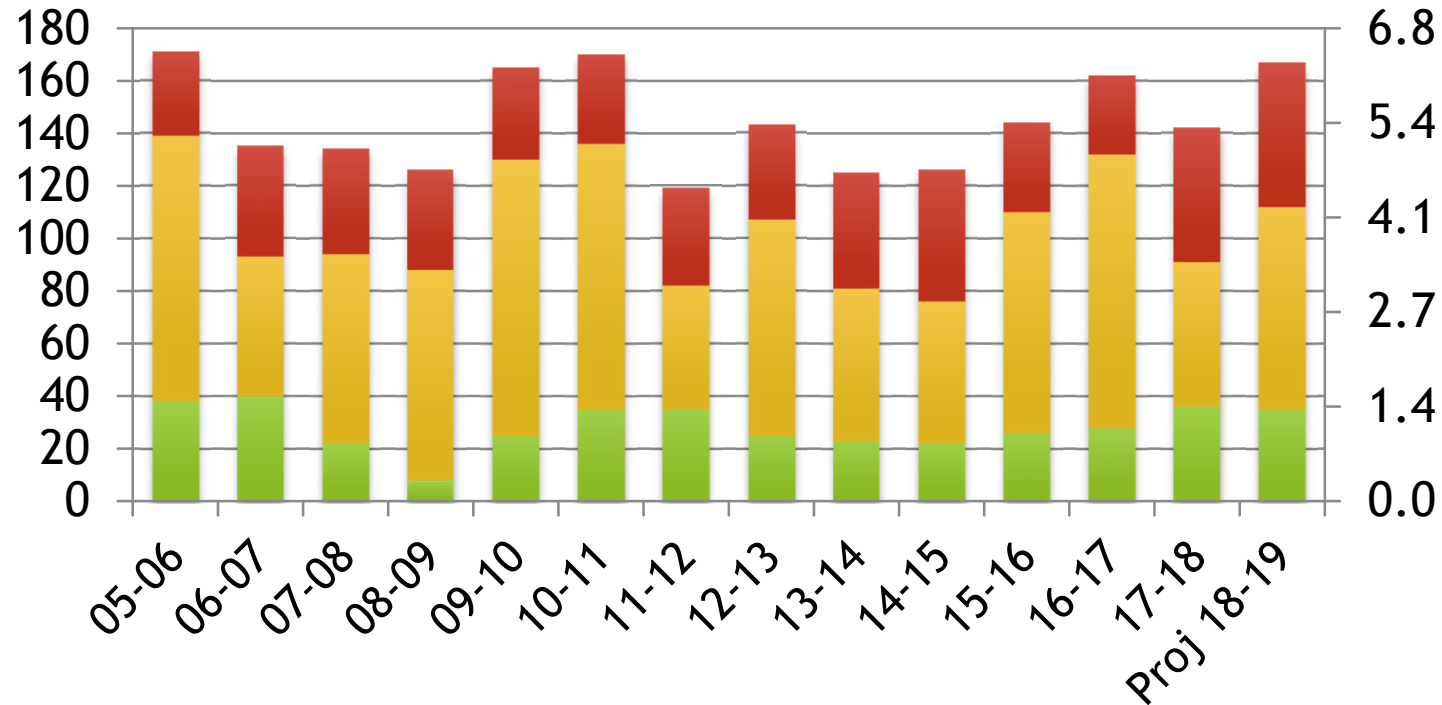
Source: USDA May2019  
Xldata/both/S&D prod, conump, carryover

# DURUM SUPPLIES IN THE U.S.

Million Bushels

Million Tons

■ Beg Stocks   ■ Production   ■ Imports



Source: USDA May 2019

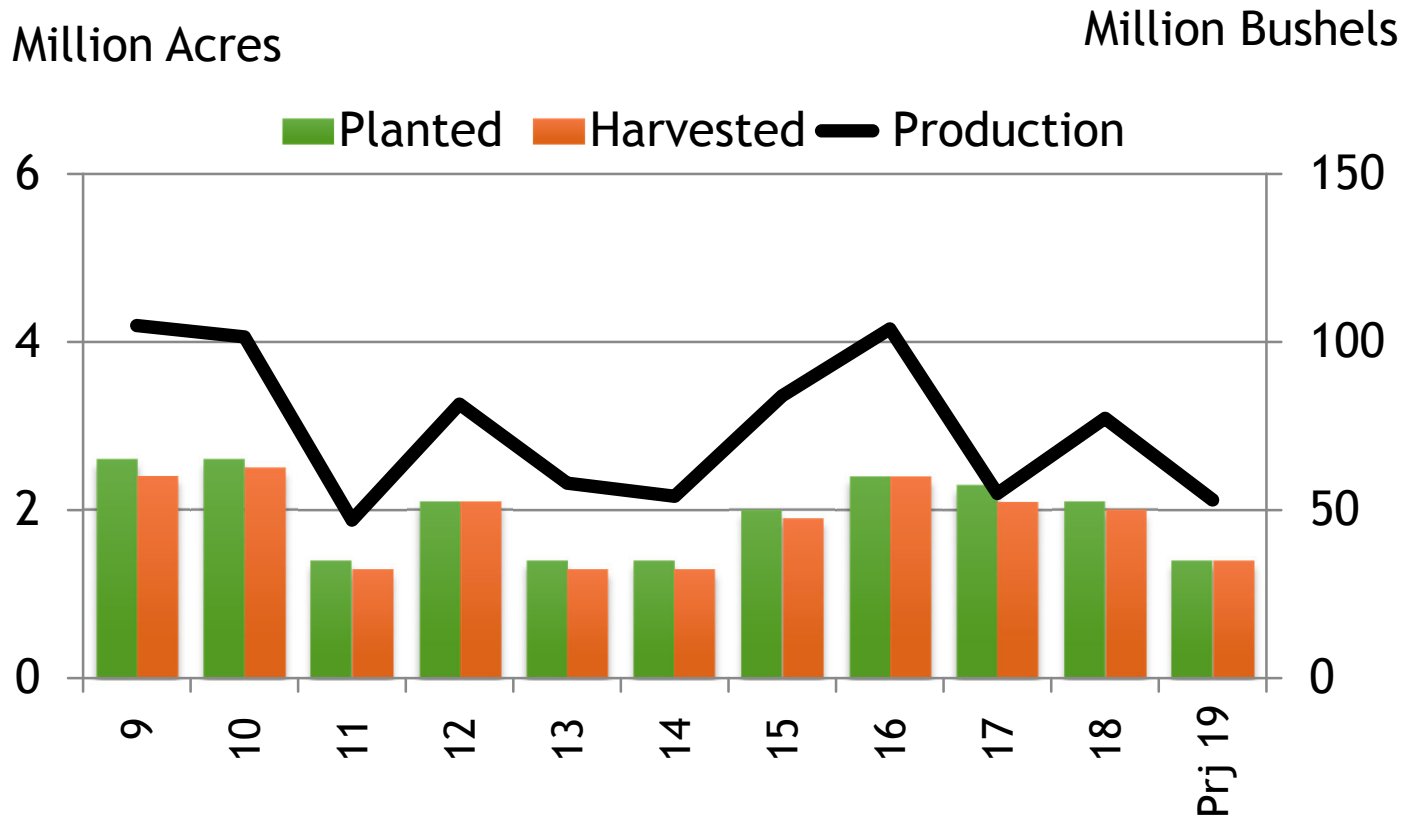
# U.S. DURUM WHEAT PRODUCTION

Acres-Bushels

	Planted	Harvested	Yield	Production
2009	2.6	2.4	44.0	104.9
2010	2.6	2.5	41.2	101.5
2011	1.4	1.3	36.8	47.0
2012	2.1	2.1	38.4	81.5
2013	1.4	1.3	43.3	58.0
2014	1.4	1.3	40.2	54.1
2015	2.0	1.9	44.0	84.0
2016	2.4	2.4	44.0	103.9
2017	2.3	2.1	25.7	54.9
2018	2.1	2.0	39.3	77.3
Prj 19	1.4	1.4	39.0	53.0
5 Yr Avg	1.8	1.8	42.0	76.3
10 Yr Avg	2.1	2.0	39.7	78.8

USDA Prospective Plantings  
xldata/durum acres

# U.S. DURUM WHEAT PLANTINGS & PRODUCTION



Source: USDA Prospective Plantings  
Xldata/durum/acres

# U.S. DURUM SUPPLY & DEMAND

Million Bushels

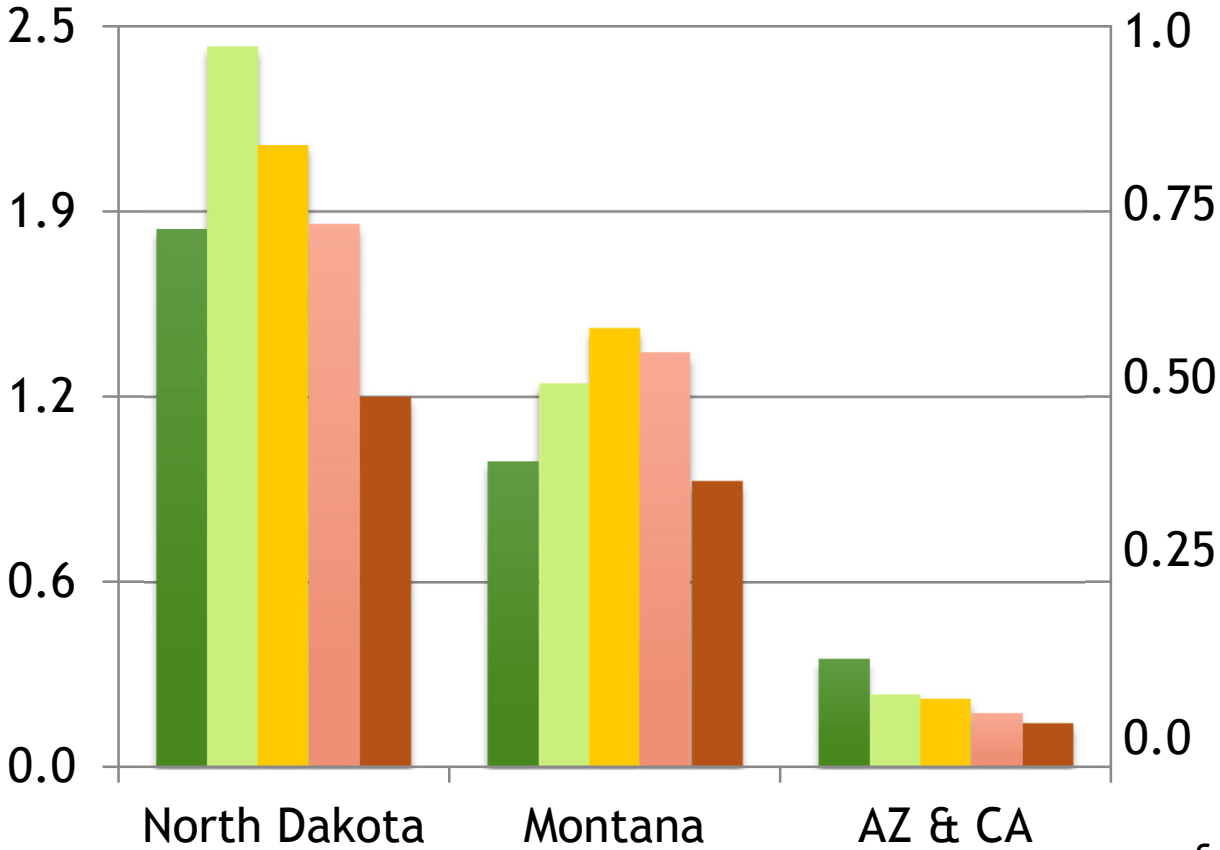
	13-14	14-15	15-16	16-17	17-18	Proj 18-19	Change
Beg Stocks	23	22	26	28	36	35	-3%
Production	58	54	84	104	55	77	+40%
Imports	44	50	34	30	51	55	+8%
Tot Supply	125	126	144	162	142	167	+18%
Dom Use	76	64	86	101	90	86	-4%
Exports	32	37	30	24	18	20	+11%
Tot Use	108	101	116	126	107	106	-1%
End Stocks	22	26	28	36	35	61	+74%
S/U Ratio	20%	26%	24%	29%	33%	58%	

Source: USDA May 2019  
Xldata/durum/S&D



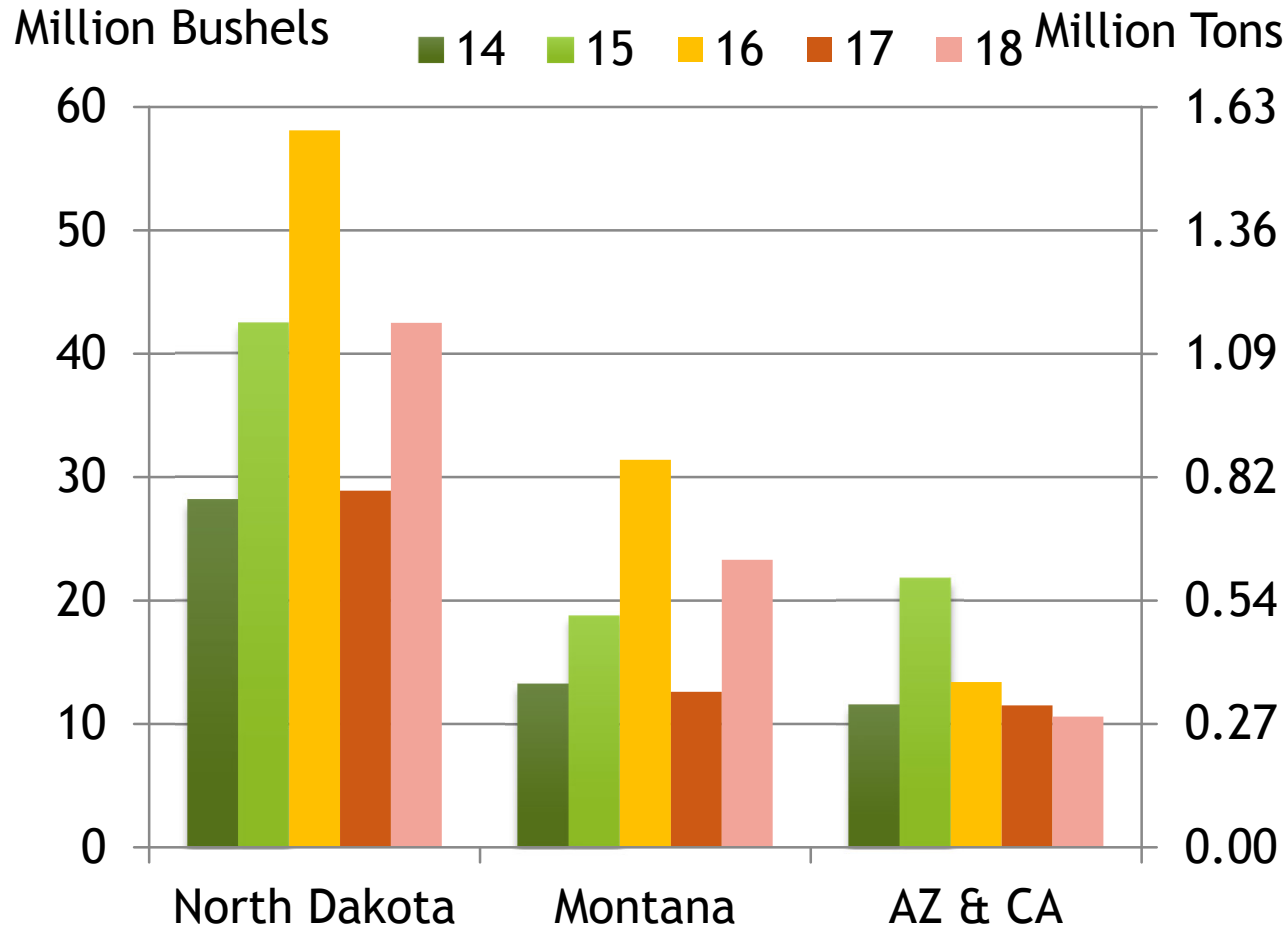
# U.S. DURUM WHEAT PLANTINGS BY STATE

Million Acres    ■ 15   ■ 16   ■ 17   ■ 18   ■ 19    Million Hectares



Source: USDA March Planting Intentions

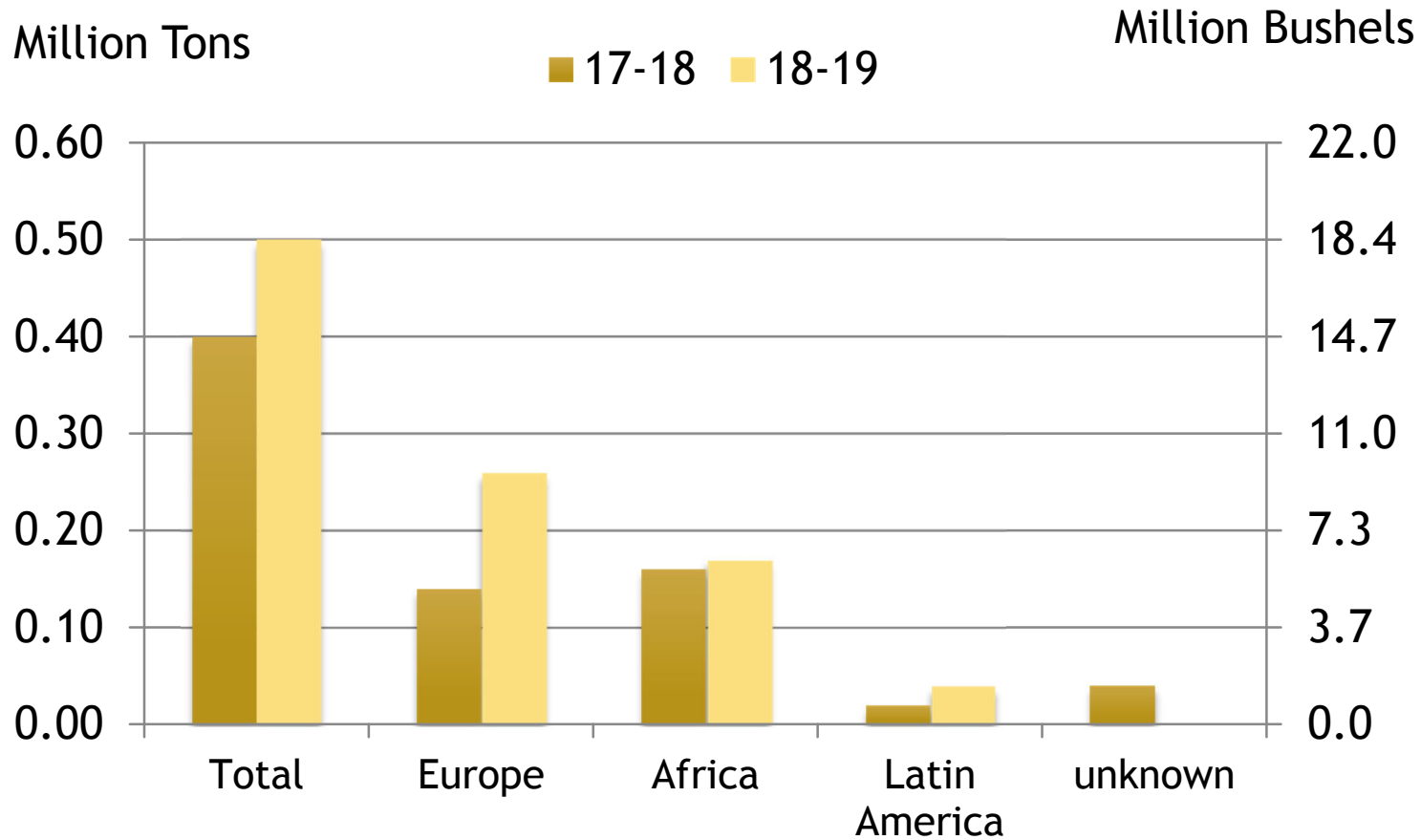
# U.S. DURUM WHEAT PRODUCTION BY STATE



Source: USDA Small Grains Summary

# EXPORT PACE - U.S. DURUM WHEAT

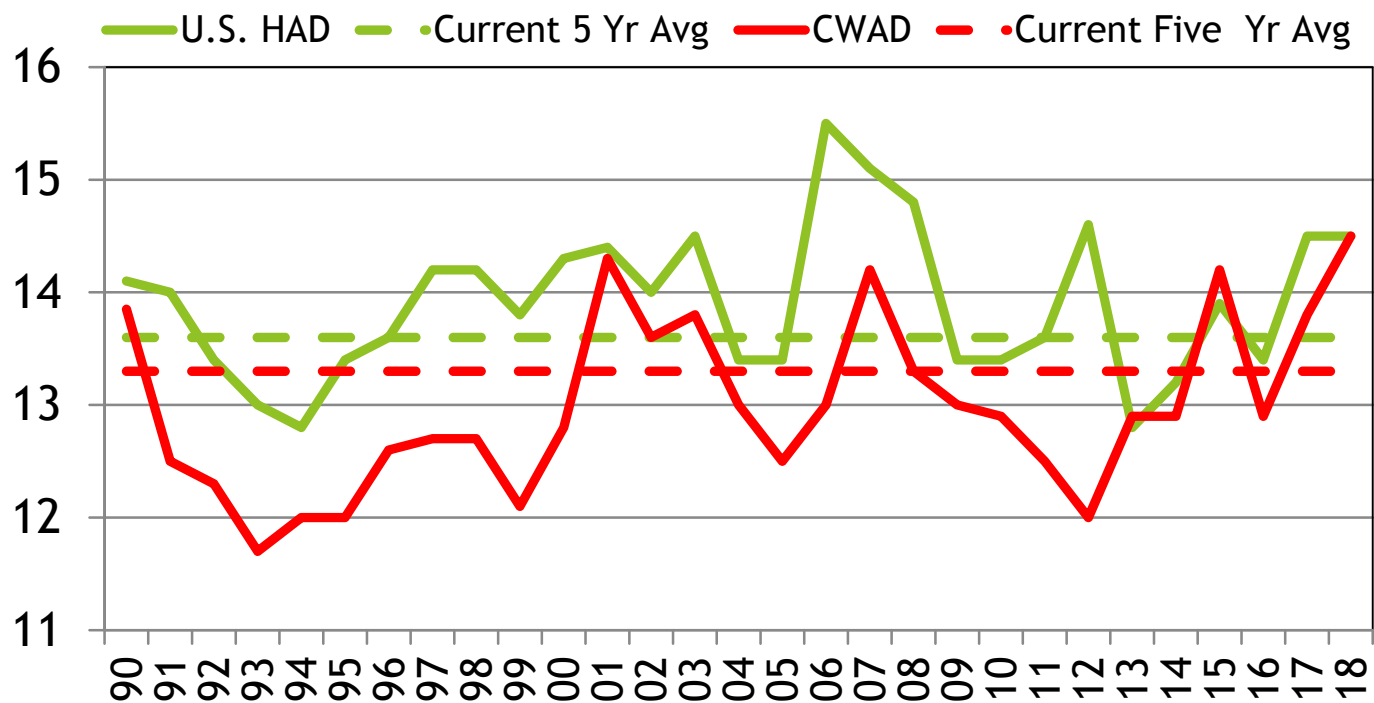
as of May 3, 2109



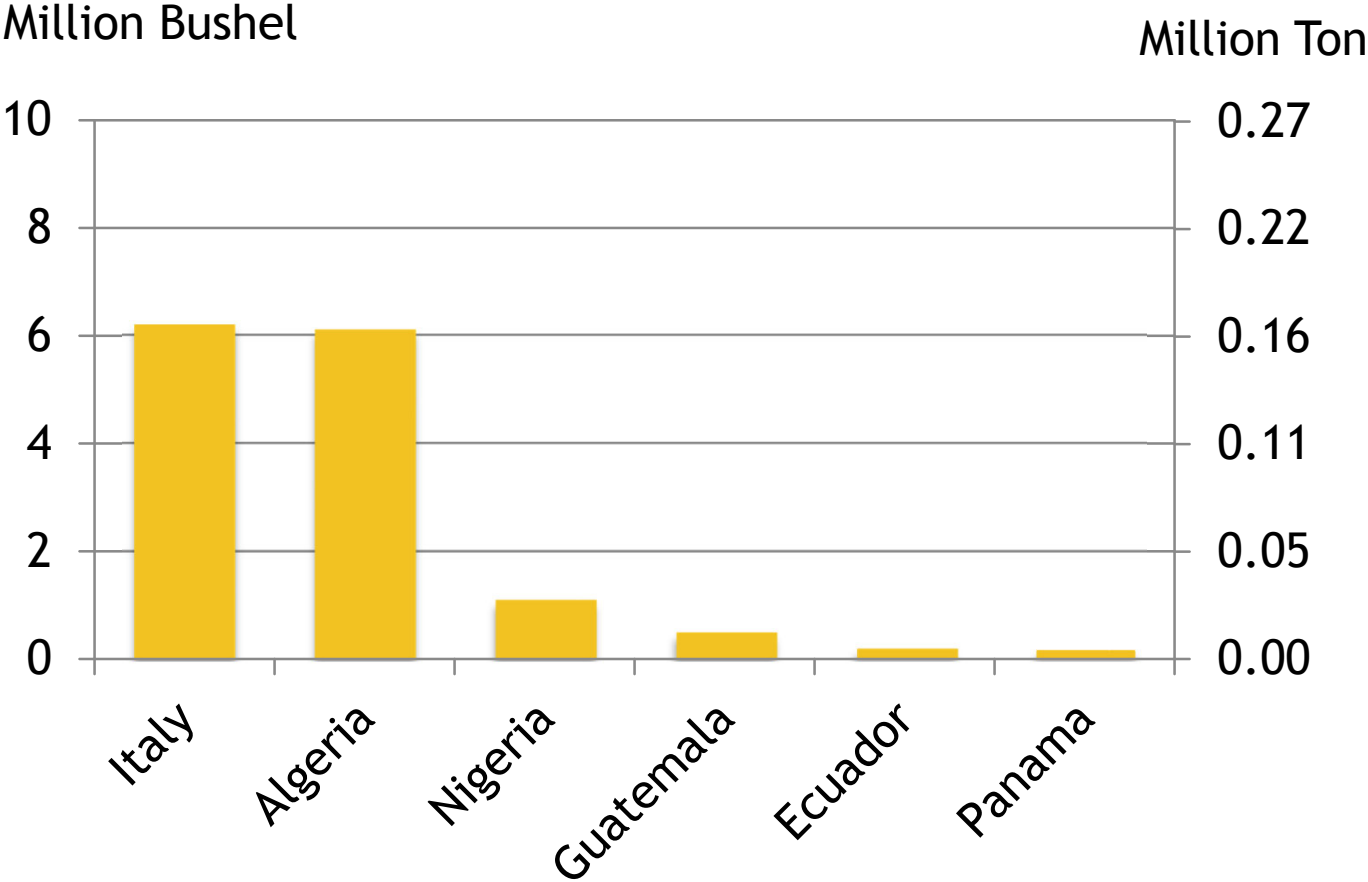
# COMPARATIVE U.S. WHEAT PROTEIN

## 12% Moisture Basis

Protein Content



# TOP IMPORTERS OF U.S. DURUM IN MARKETING YEAR 2017-18

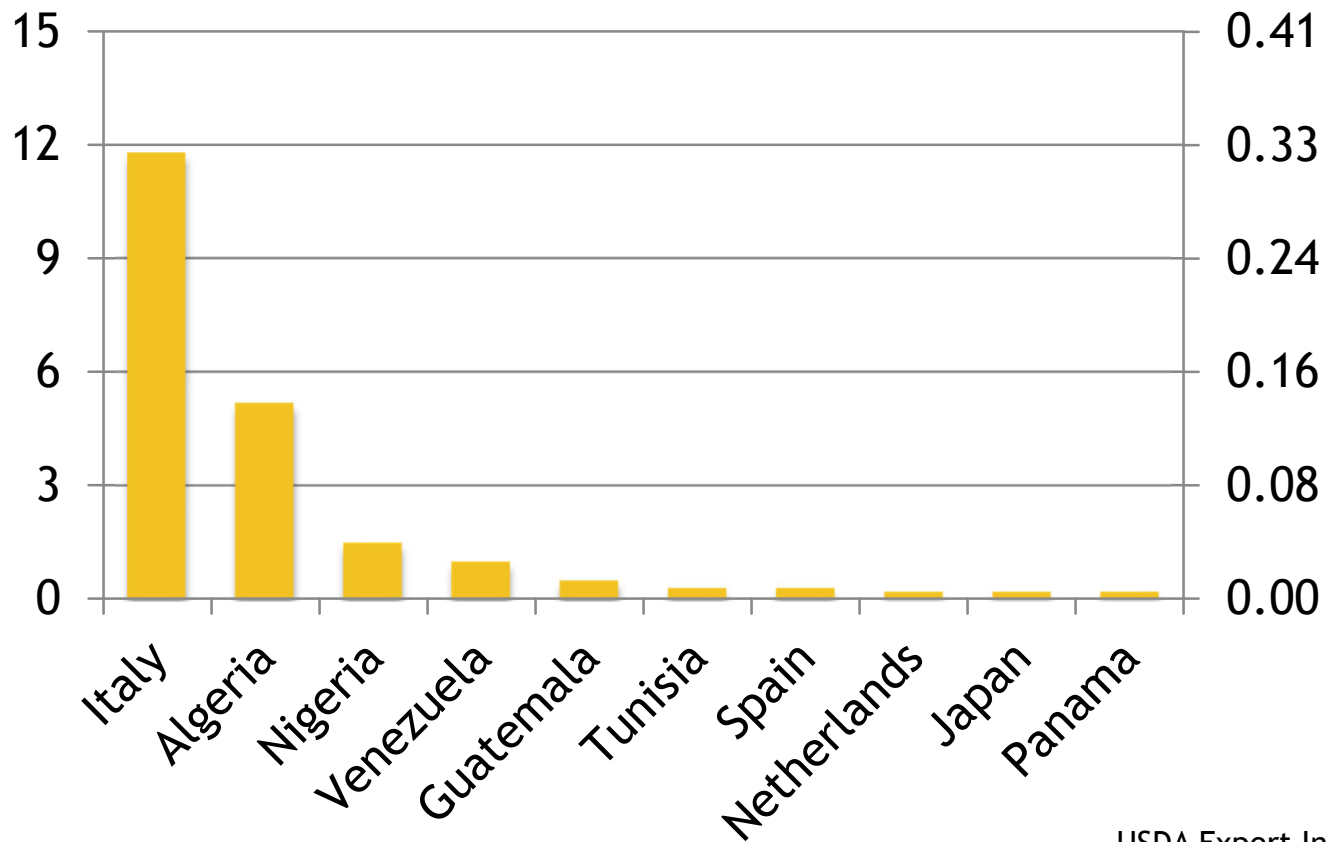


USDA Export Inspections  
Xldata/Both/Exports/Top 10 & 5 yr avg

# TOP IMPORTERS OF U.S. DURUM FIVE-YEAR AVERAGE (2013/14 - 2017/18)

Million Bushel

Million Ton



USDA Export Inspections  
Xldata/Both/Exports/Top 10 & 5 yr avg

# EXPORT TRENDS - BY REGION

## U.S. Durum Wheat

