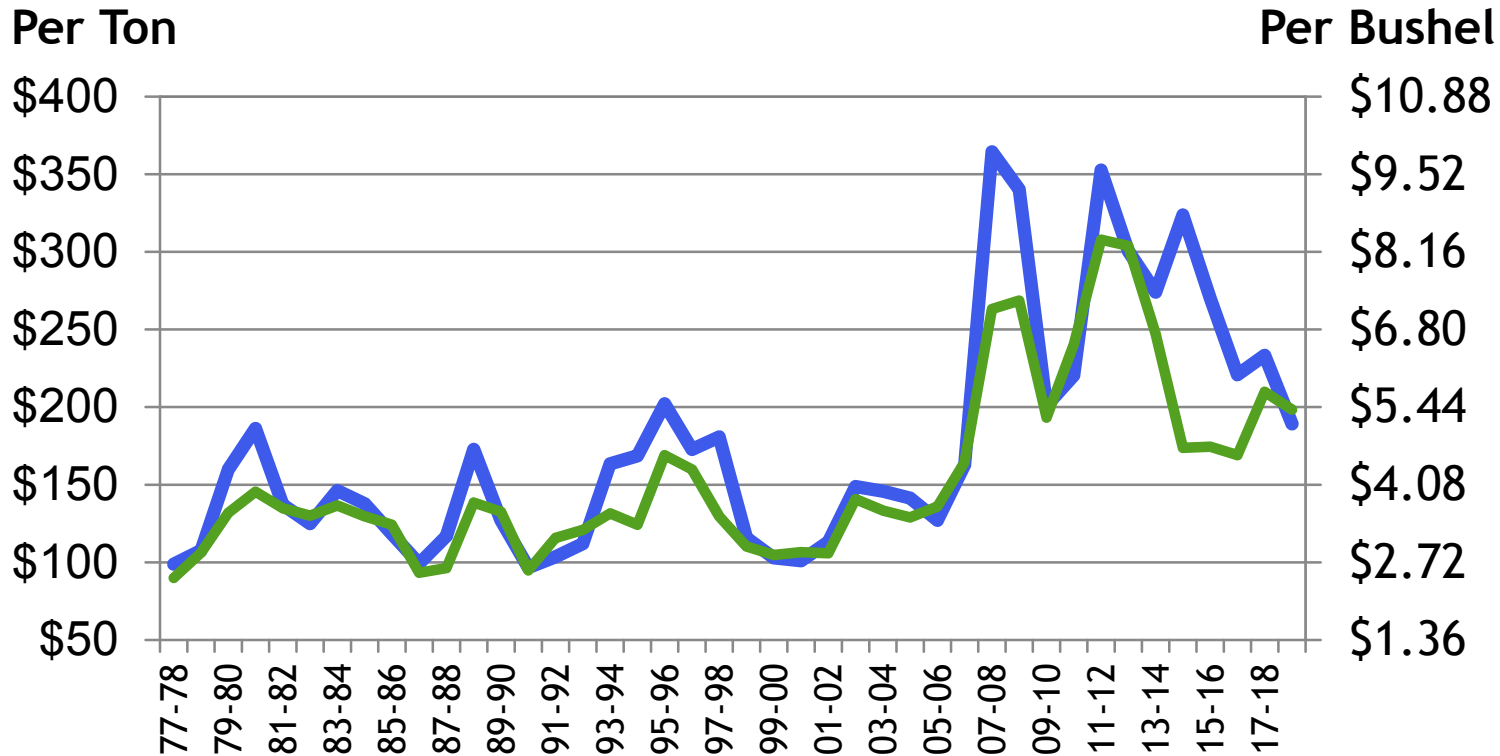


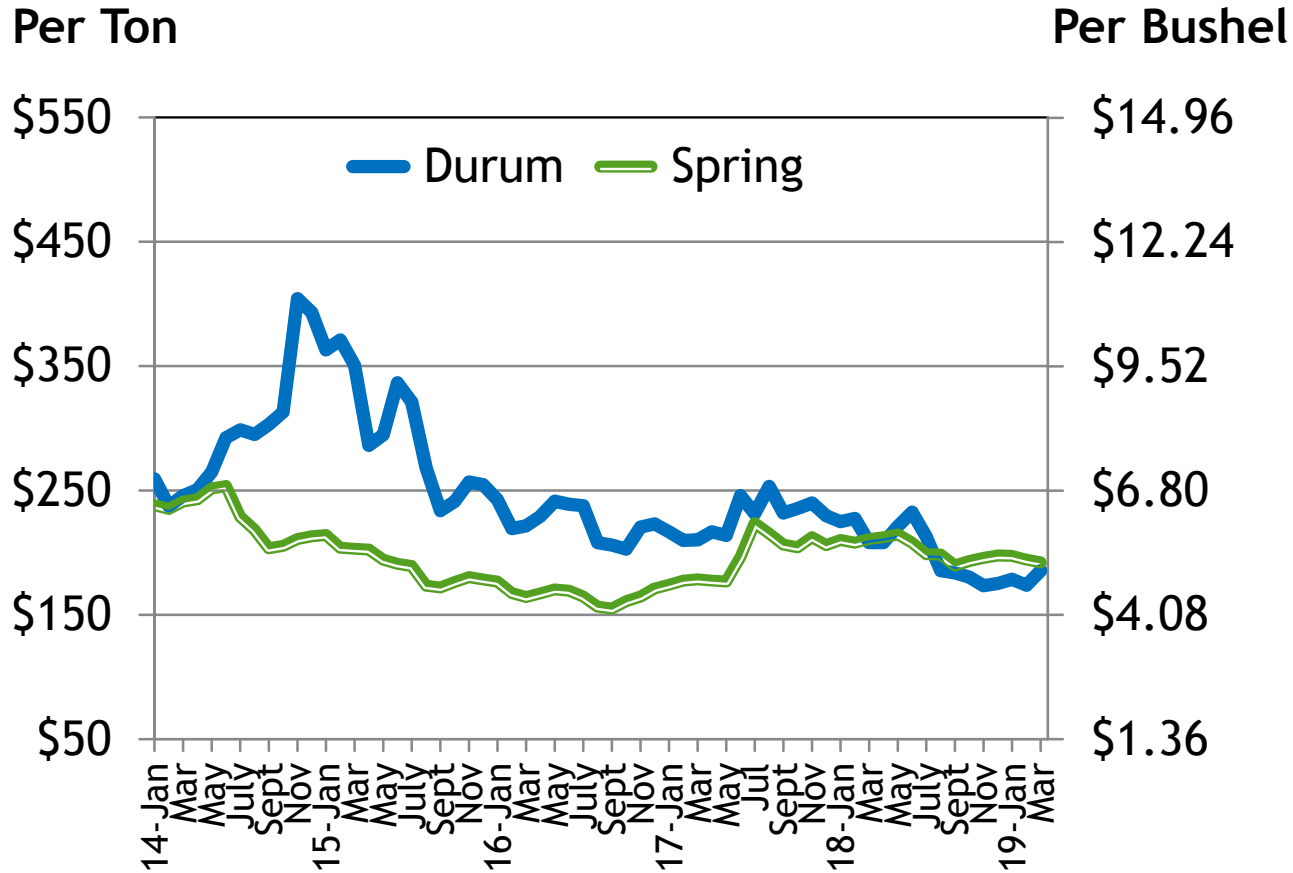
# U.S. AVERAGE FARM PRICES (Long Term)



— Durum — HRS

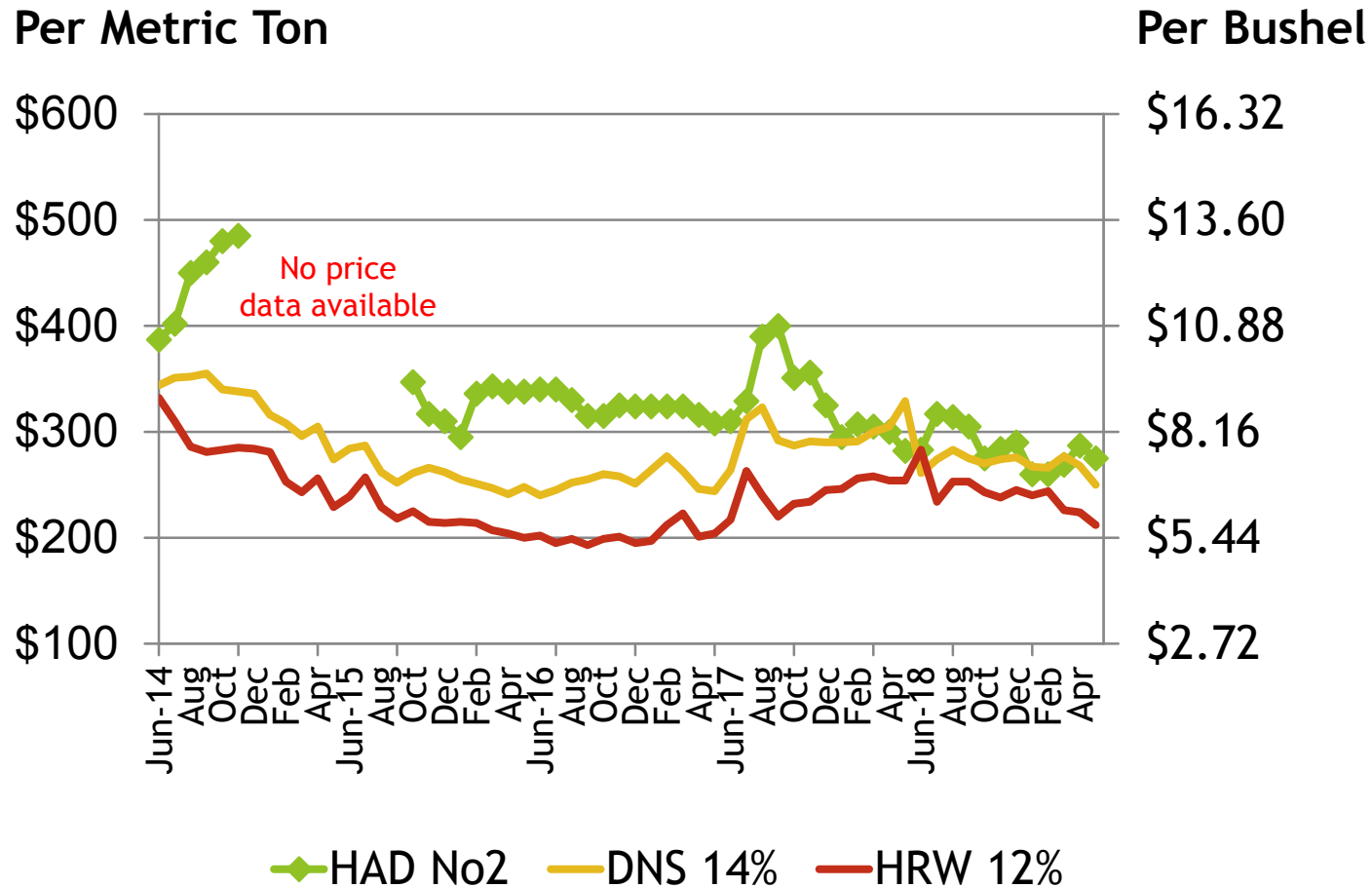
Source: USDA, Annual Price Summary  
5/10/19

# U.S. AVERAGE FARM PRICES



Source: USDA, Annual Price Summary  
4/30/2019

# PRICE TRENDS AT GULF

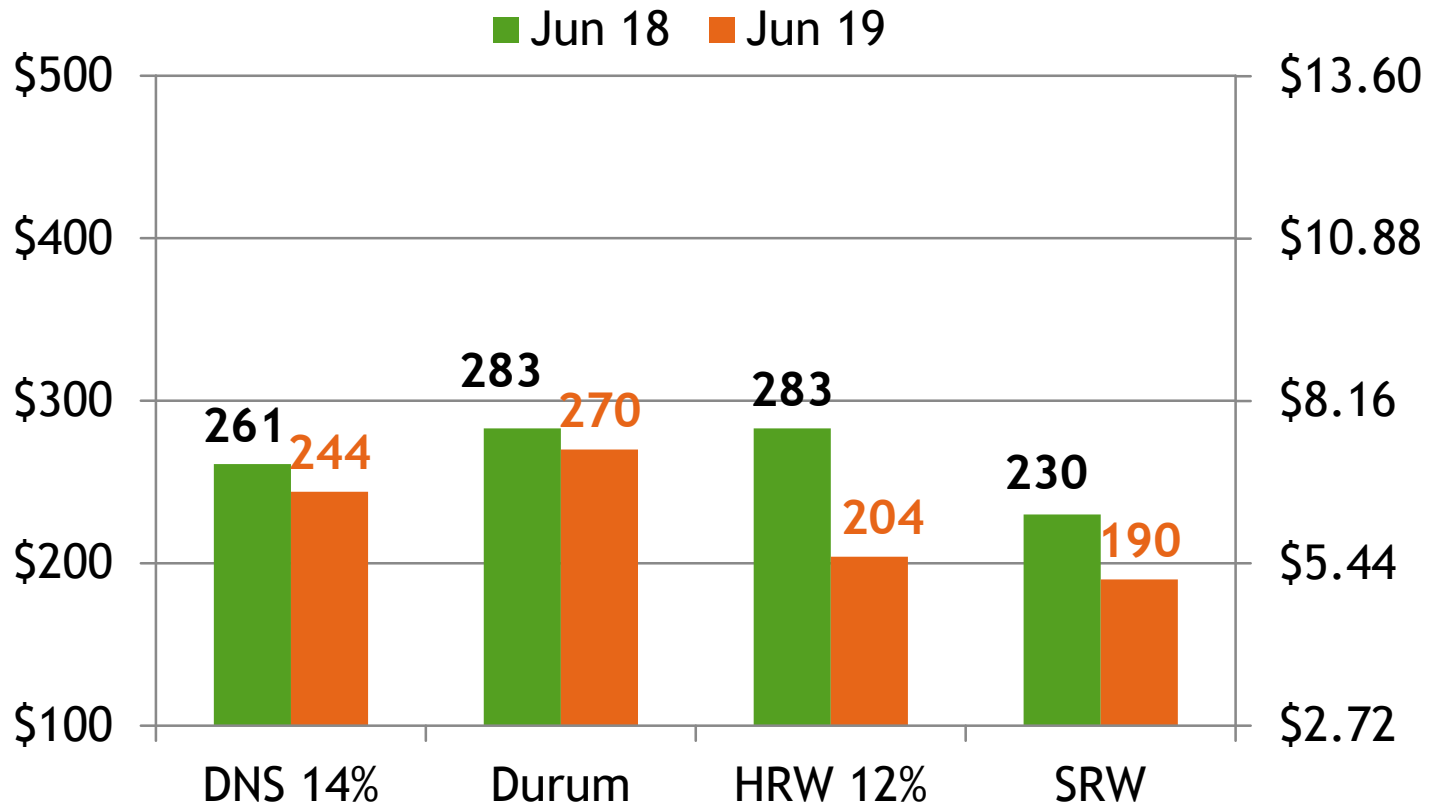


Source: USDA, Annual Price Summary  
5/10/19

# U.S. WHEAT PRICE CHANGE AT THE GULF

\$ per Ton

\$ per Bushel

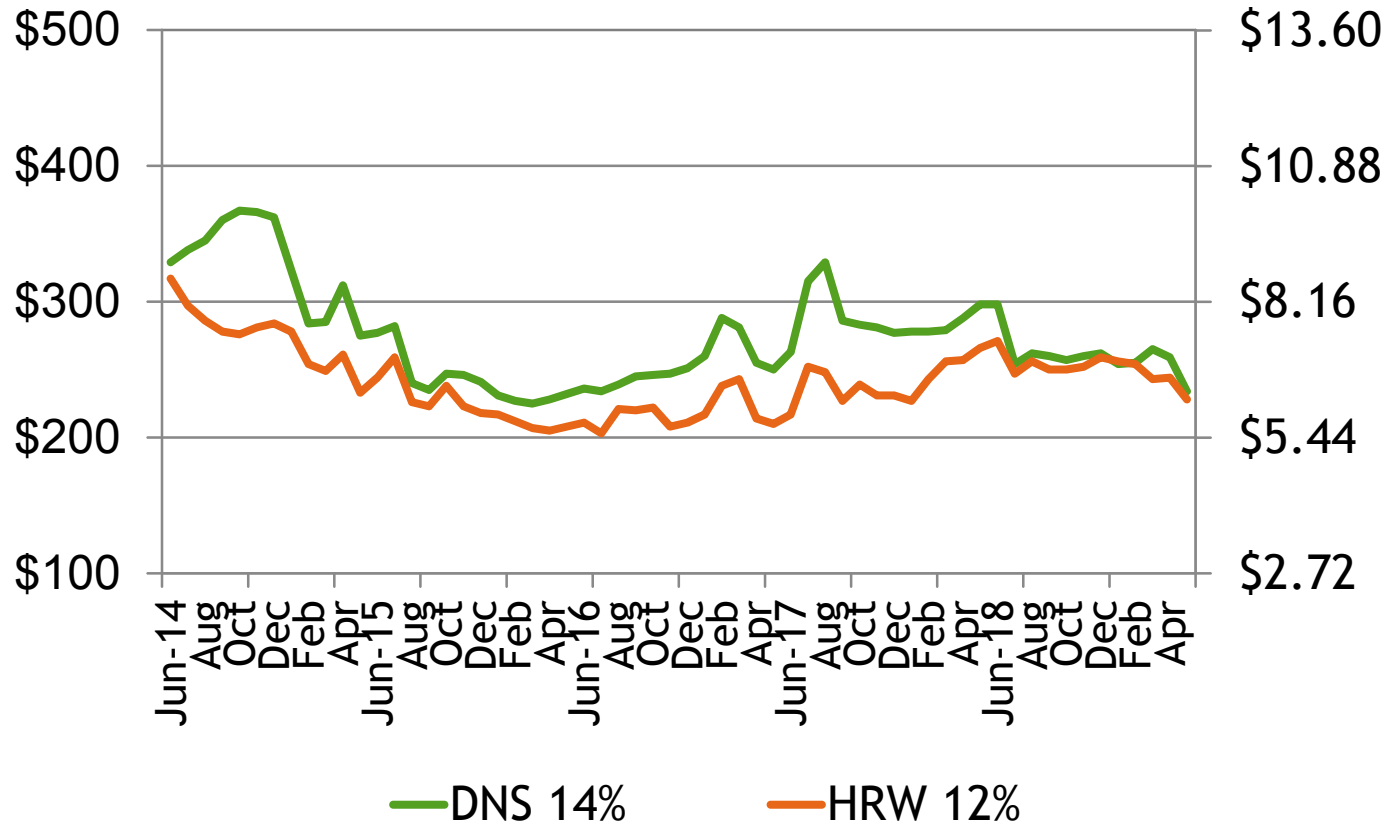


5/10/19

# PRICE TRENDS AT THE PNW

Per Metric Ton

Per Bushel

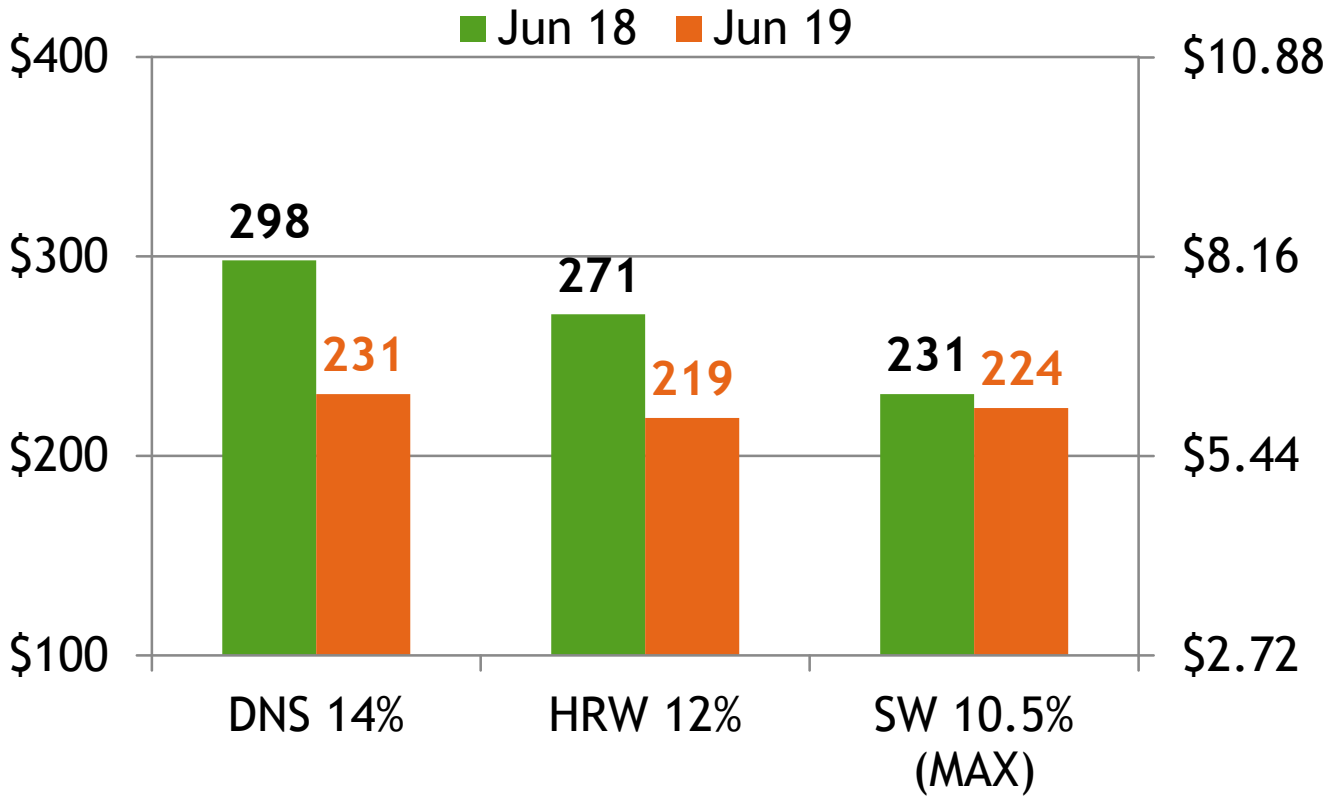


Source: USDA, Annual Price Summary  
5/10/19

# U.S. WHEAT PRICE CHANGE AT THE PNW

\$ per Ton

\$ per Bushel

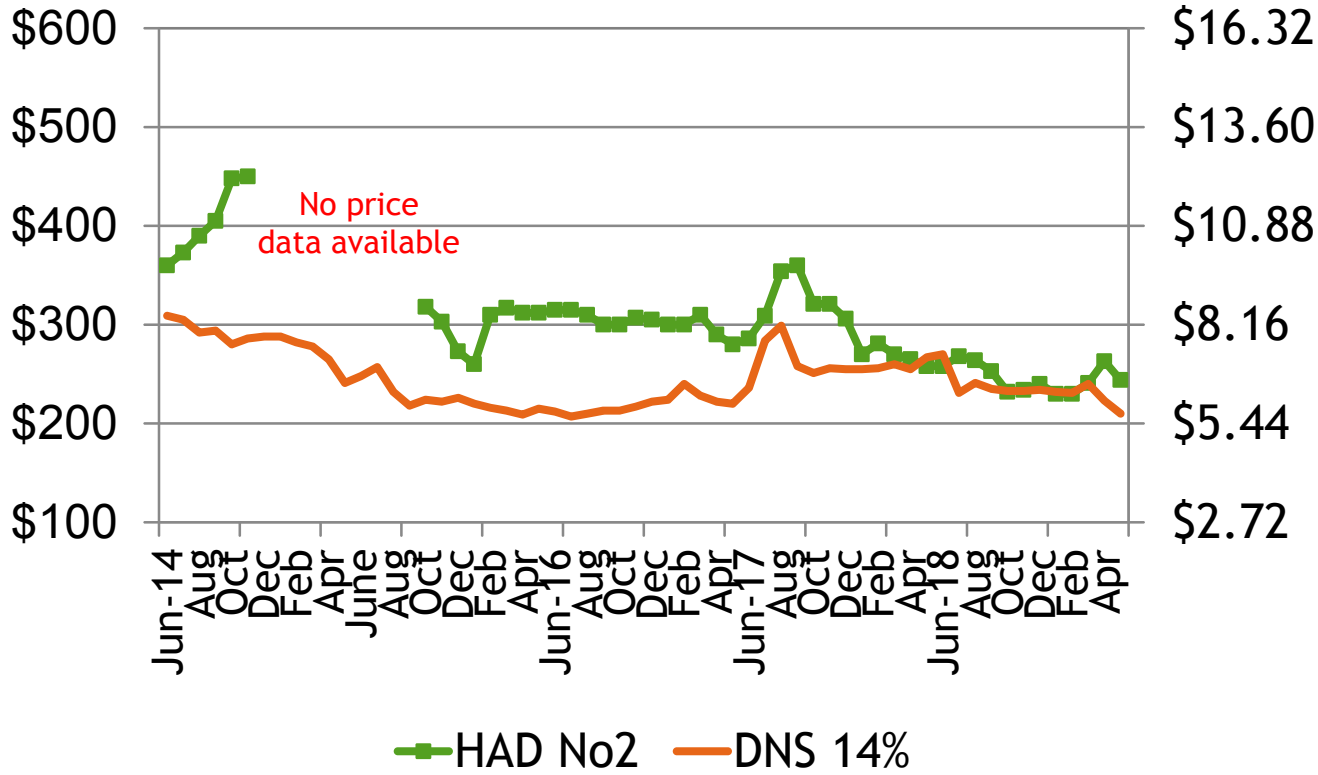


5/10/19

# PRICE TRENDS AT THE LAKES

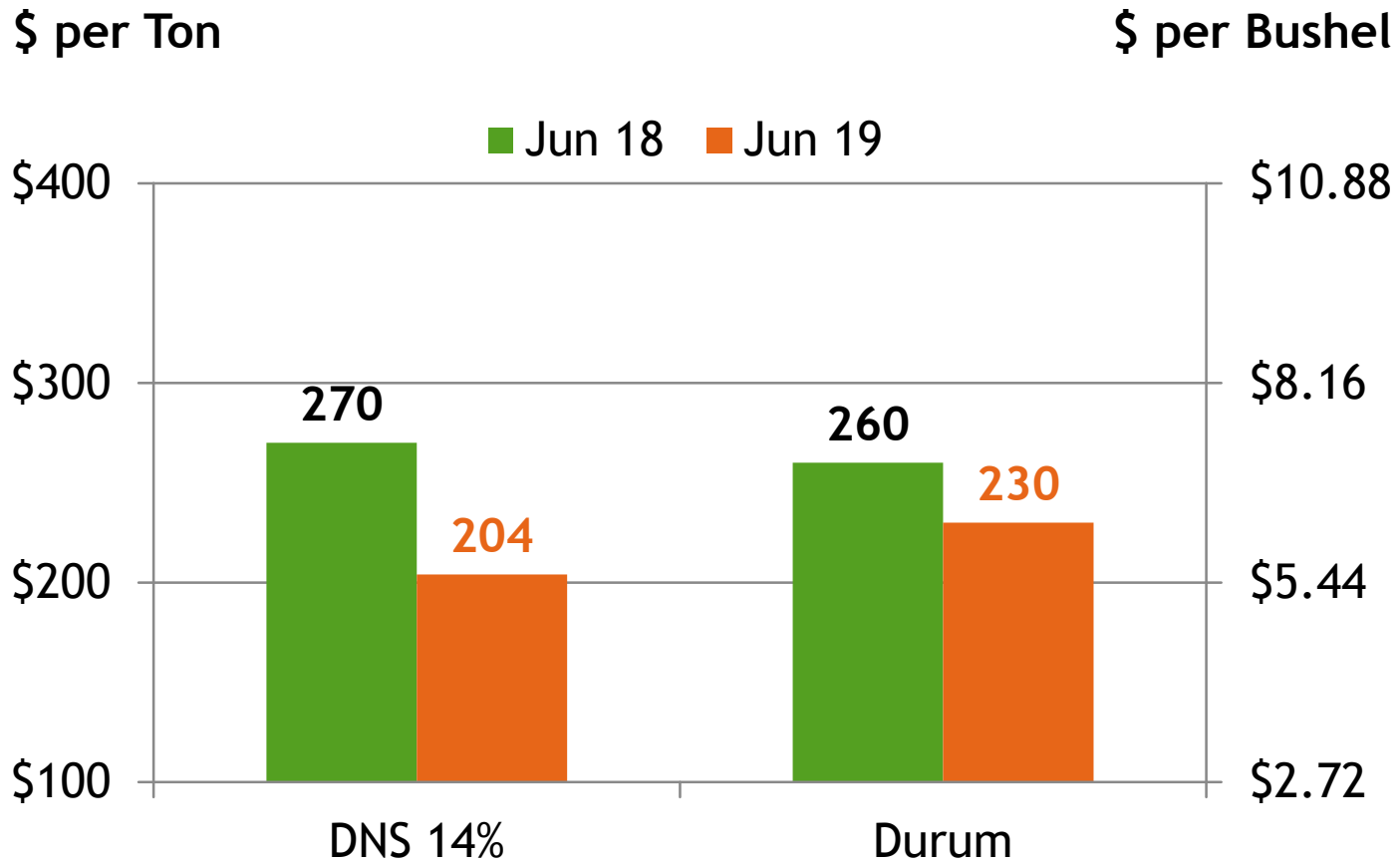
Per Metric Ton

Per Bushel



Source: USDA, Annual Price Summary  
5/10/19

# U.S. WHEAT PRICE CHANGE AT THE LAKES



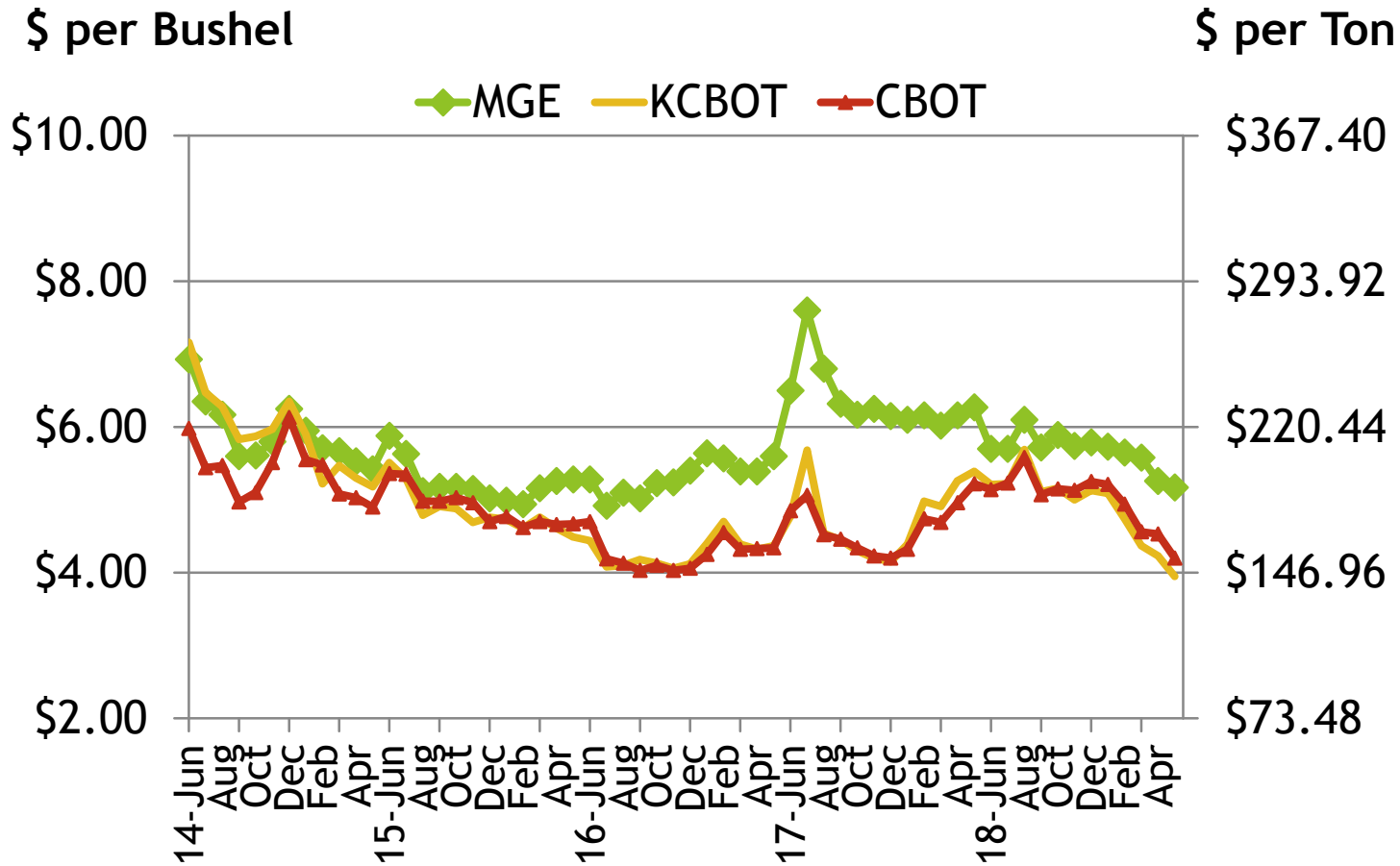


# U. S. FUTURES TRENDS

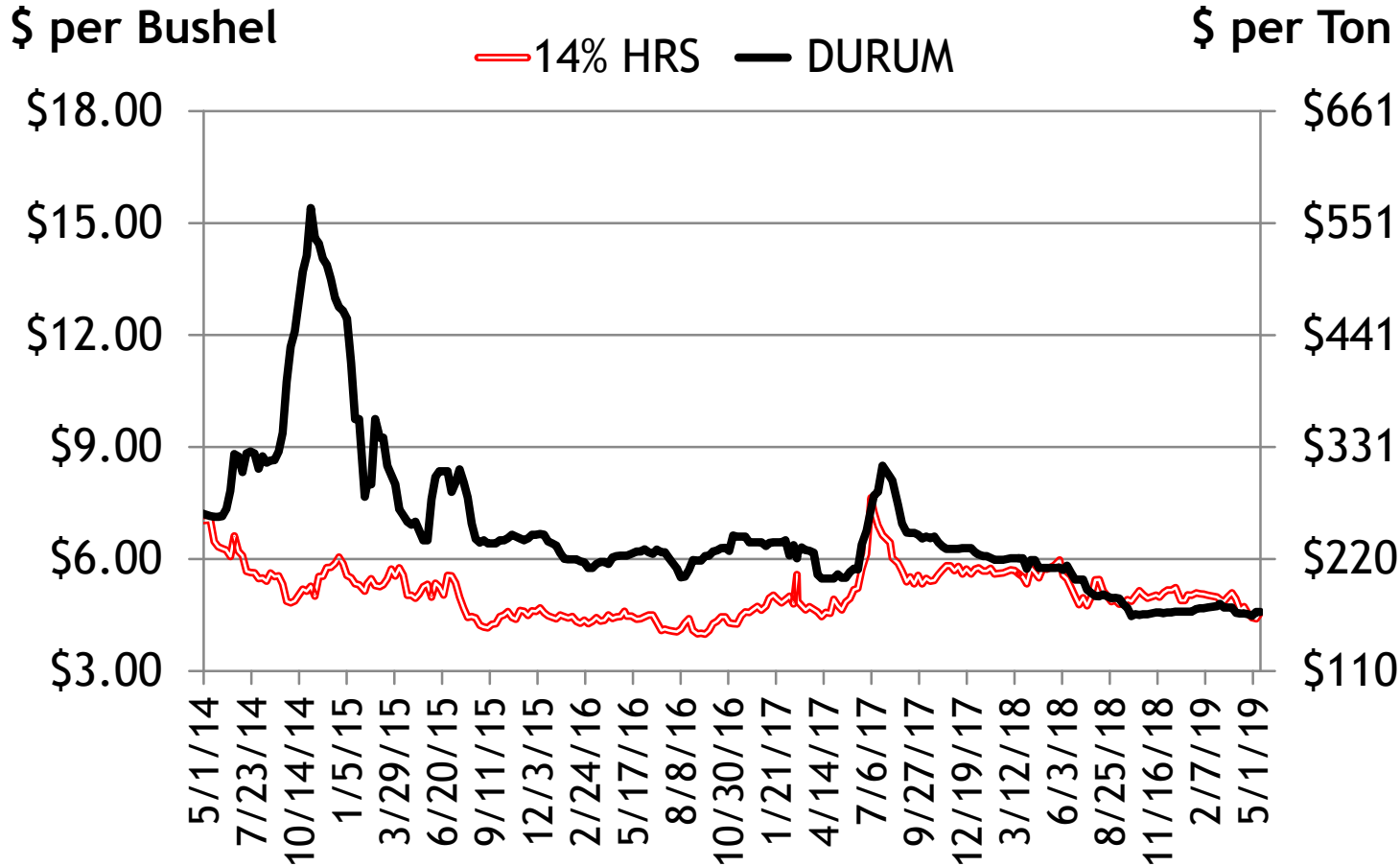
Minneapolis - Hard Red Spring

Kansas City - Hard Red Winter

Chicago - Soft Red Winter - World prices



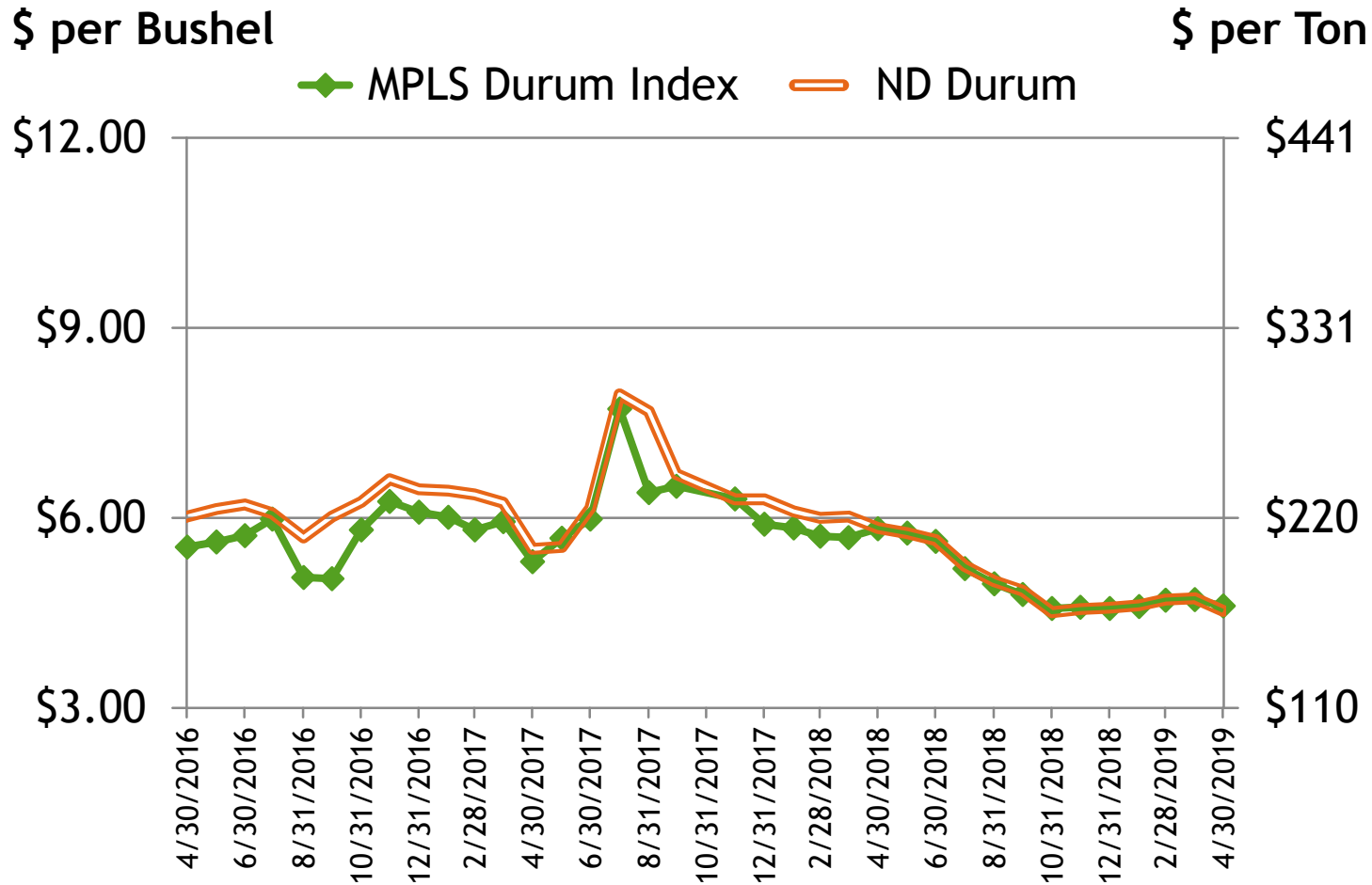
# Average N.D. Hard Red Spring and Durum Wheat Producer Bids



5/13/19

Source: AgWeek weekly prices

# Average N.D. Durum Wheat Prices



4/30/2019