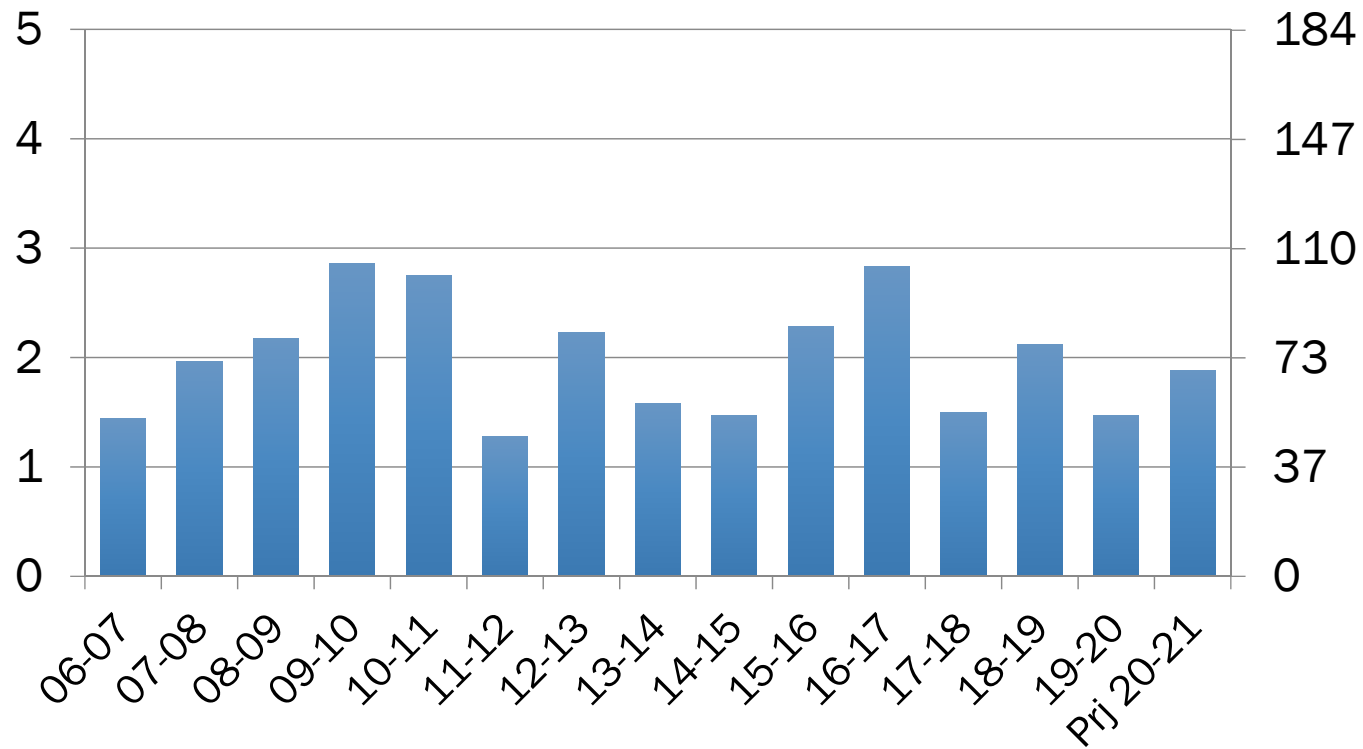


U.S. DURUM PRODUCTION

Million Tons

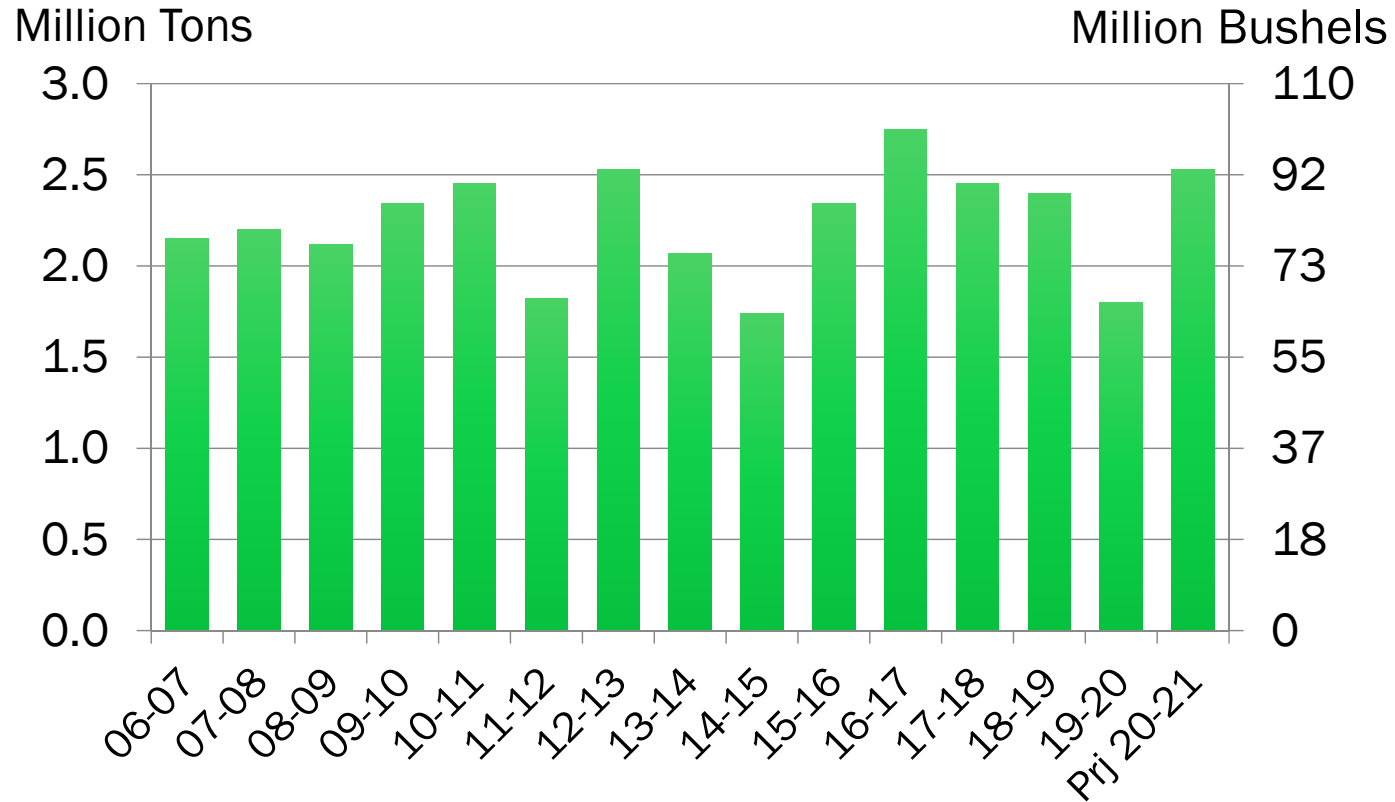
Million Bushels



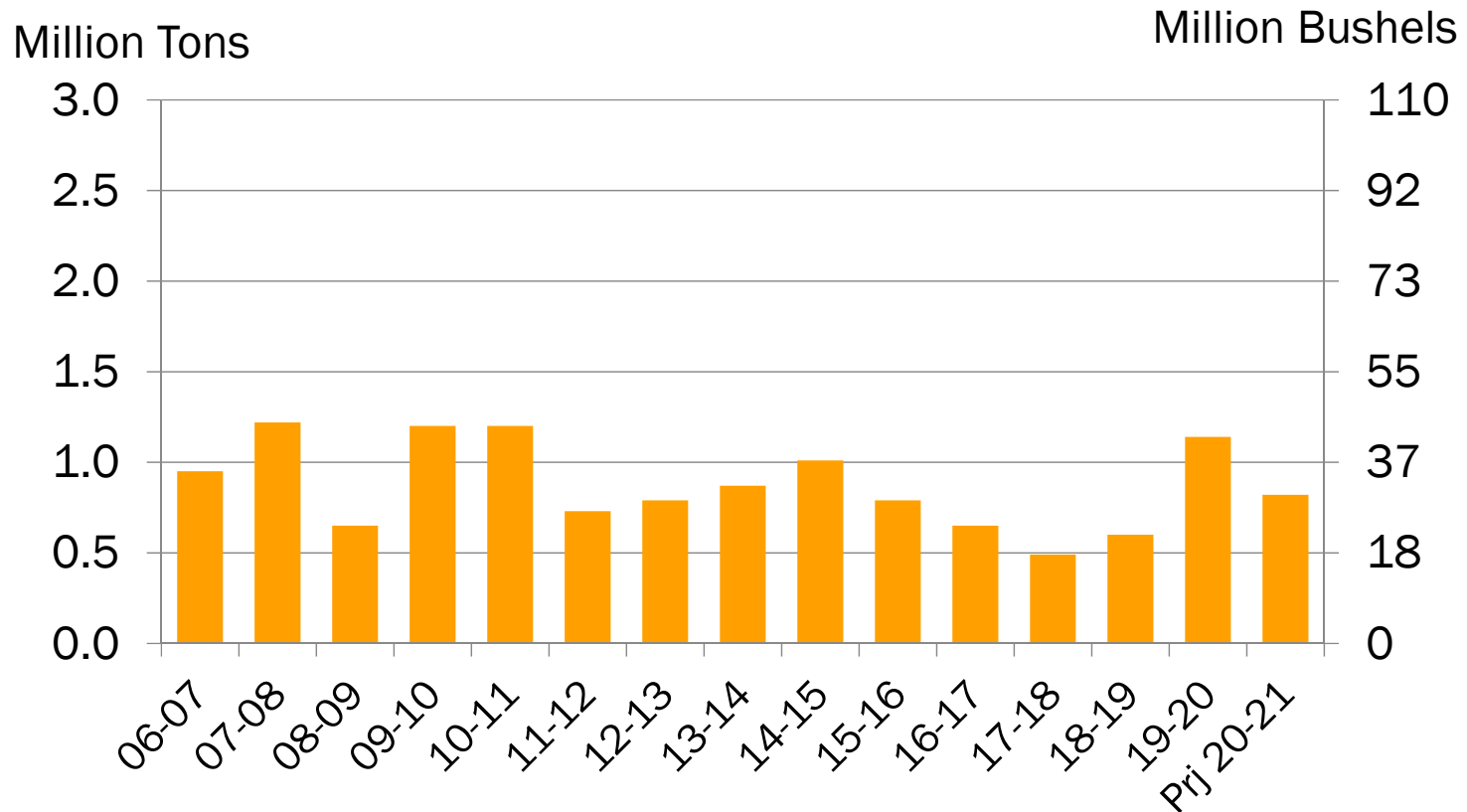
Source: USDA January 2021
Xldata/both/S&D prod, consump, carryover



U.S. DURUM DOMESTIC USE



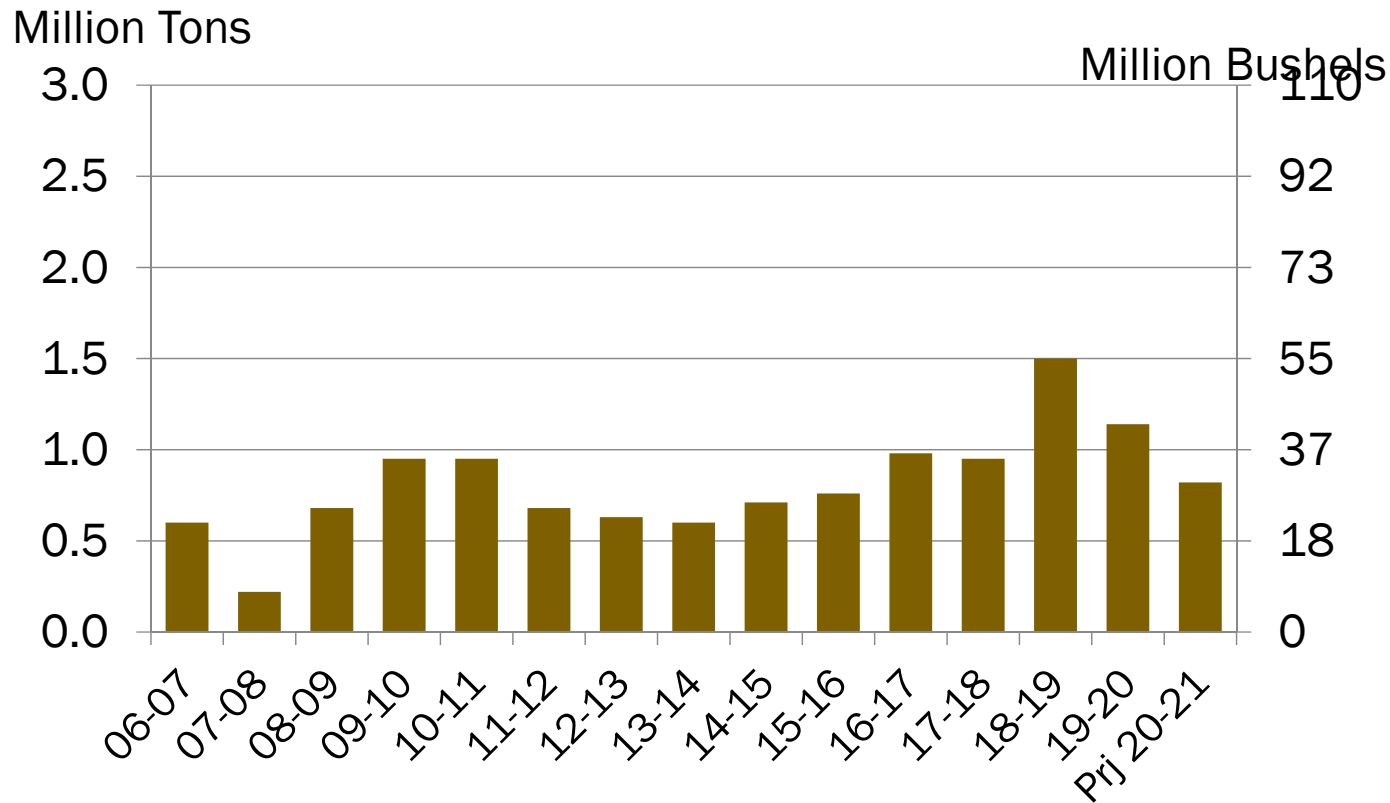
U.S. DURUM EXPORTS



Source: USDA January 2021
 Xldata/both/S&D prod, consump, carryover



U.S. DURUM STOCKS



Source: USDA January 2021
 Xldata/both/S&D prod, consump, carryover

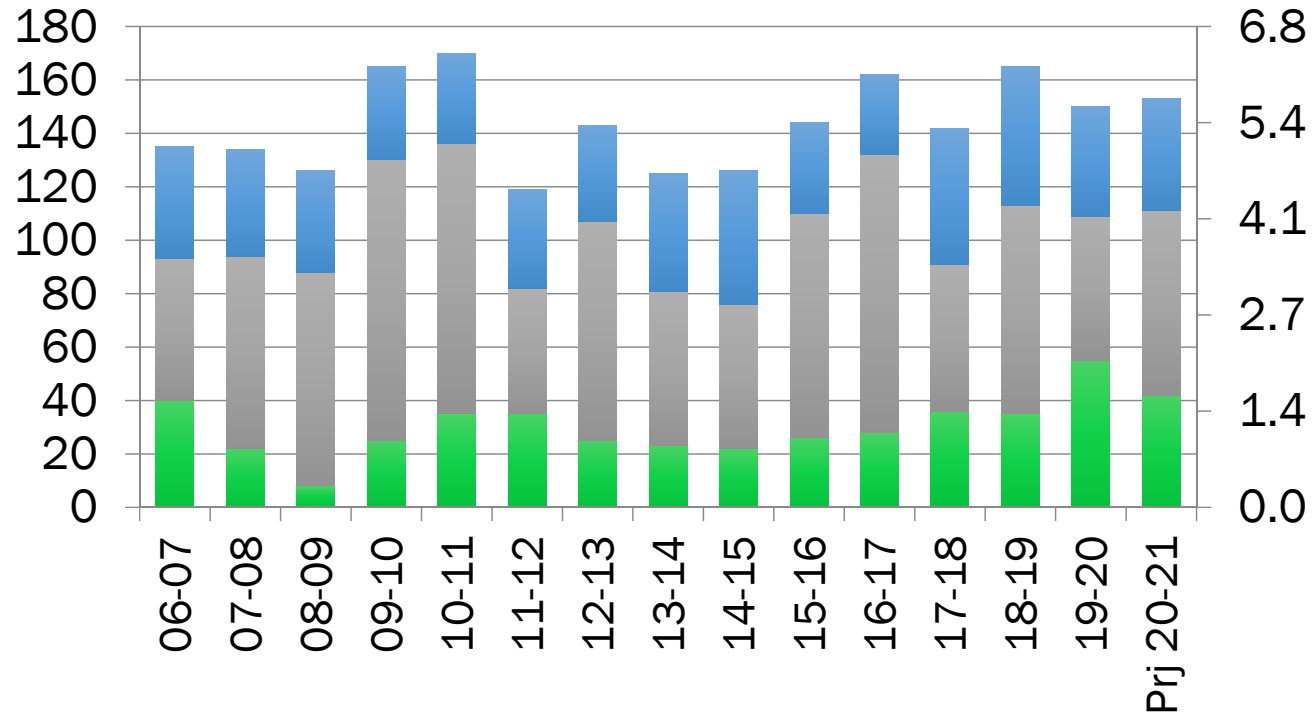


DURUM SUPPLIES IN THE U.S.

Million Bushels

Million Tons

■ Beg Stocks ■ Production ■ Imports



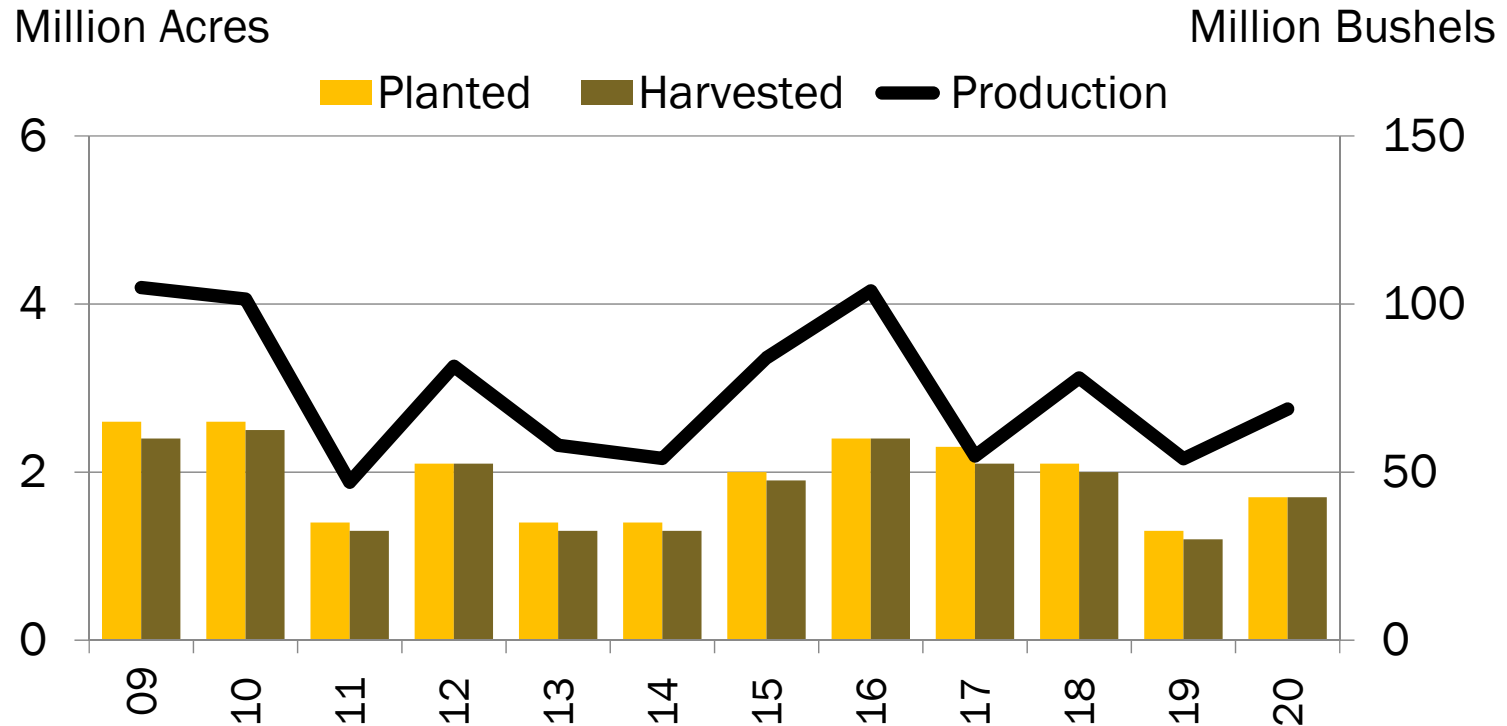
U.S. DURUM WHEAT PRODUCTION

Acres-Bushels

	Planted	Harvested	Yield	Production
2010	2.6	2.5	41.2	101.5
2011	1.4	1.3	36.8	47.0
2012	2.1	2.1	38.4	81.5
2013	1.4	1.3	43.3	58.0
2014	1.4	1.3	40.2	54.1
2015	2.0	1.9	44.0	84.0
2016	2.4	2.4	44.0	103.9
2017	2.3	2.1	26.0	54.8
2018	2.1	2.0	39.5	78.0
2019	1.3	1.2	45.8	54.0
2020	1.7	1.7	41.4	68.8
5 Yr Avg	1.8	1.8	42.0	76.3
10 Yr Avg	2.1	2.0	39.7	78.8



U.S. DURUM WHEAT PLANTINGS & PRODUCTION



Source: USDA Small Grains Summary
Xldata/durum/acres



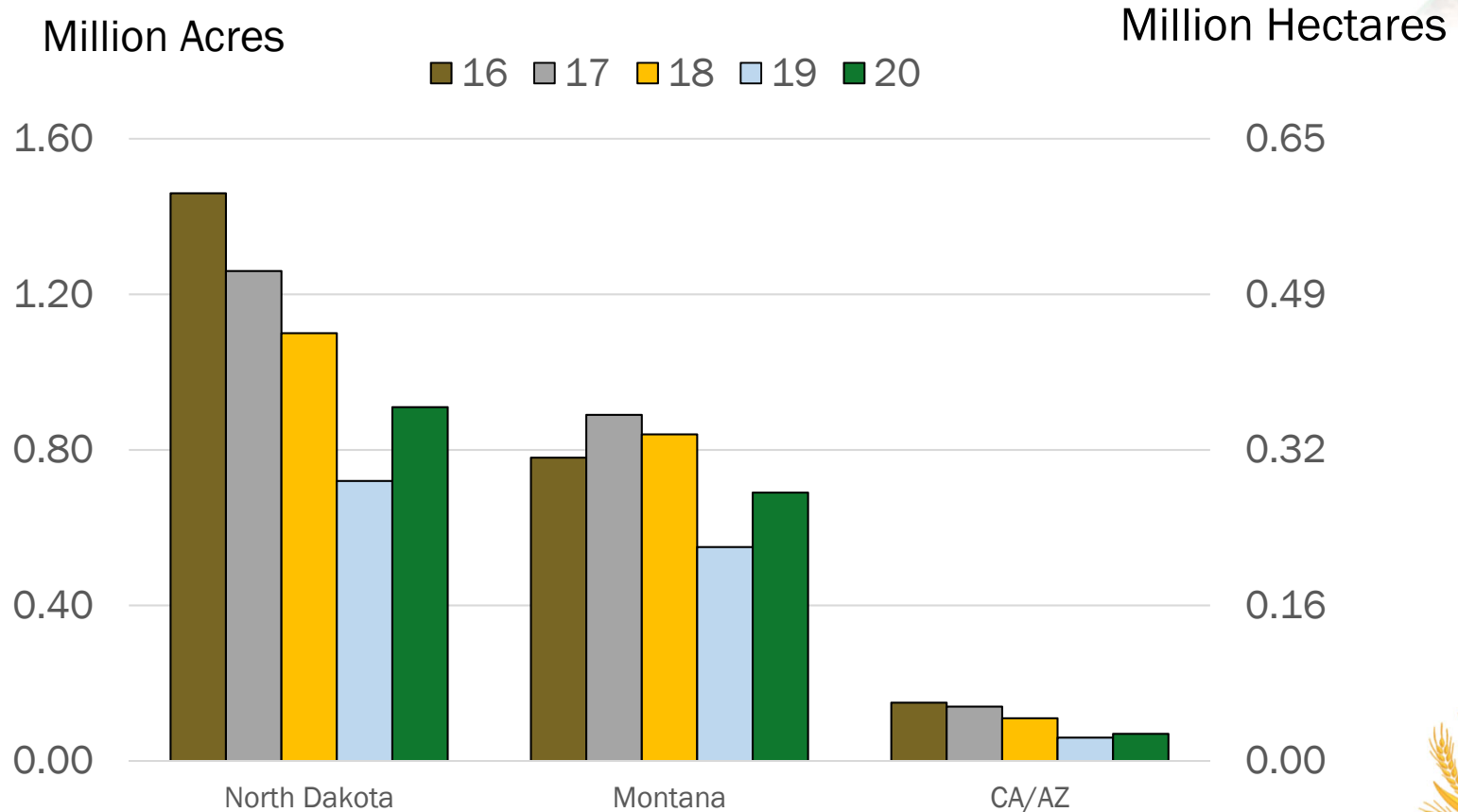
U.S. DURUM SUPPLY & DEMAND

Million Bushels

	16-17	17-18	18-19	19-20	Proj 20-21	Change
Beg Stocks	28	36	35	55	42	-24%
Production	104	55	78	54	69	+28%
Imports	30	51	52	41	42	+2%
Tot Supply	162	142	165	150	153	+2%
Dom Use	101	90	88	66	92	+39%
Exports	24	18	22	42	30	-29%
Tot Use	126	107	110	108	122	+13%
End Stocks	36	35	55	42	30	-29%
S/U Ratio	29%	33%	50%	39%	25%	



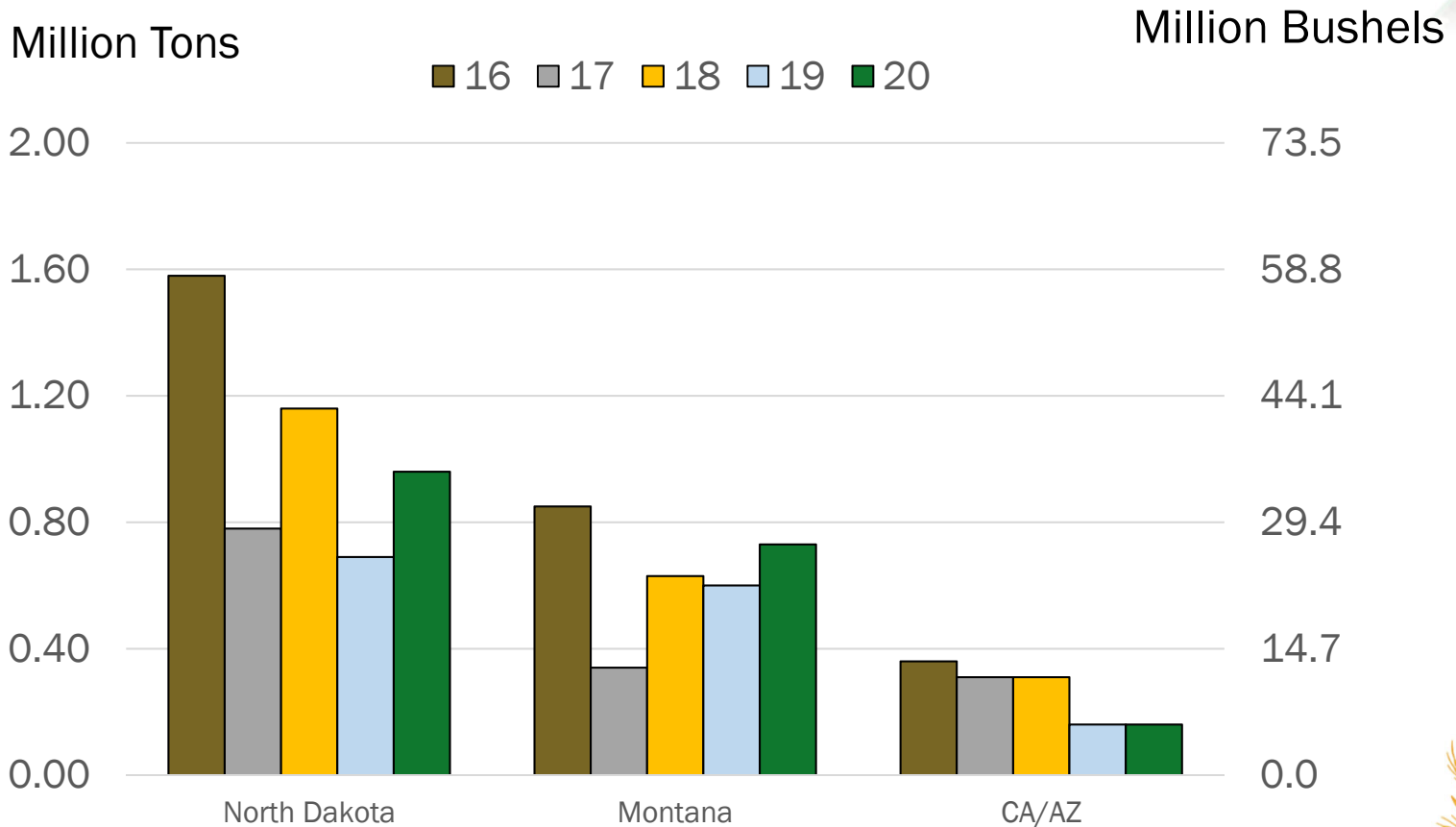
U.S. DURUM WHEAT PLANTINGS BY STATE



Source: USDA Small Grains Summary



U.S. DURUM WHEAT PRODUCTION BY STATE

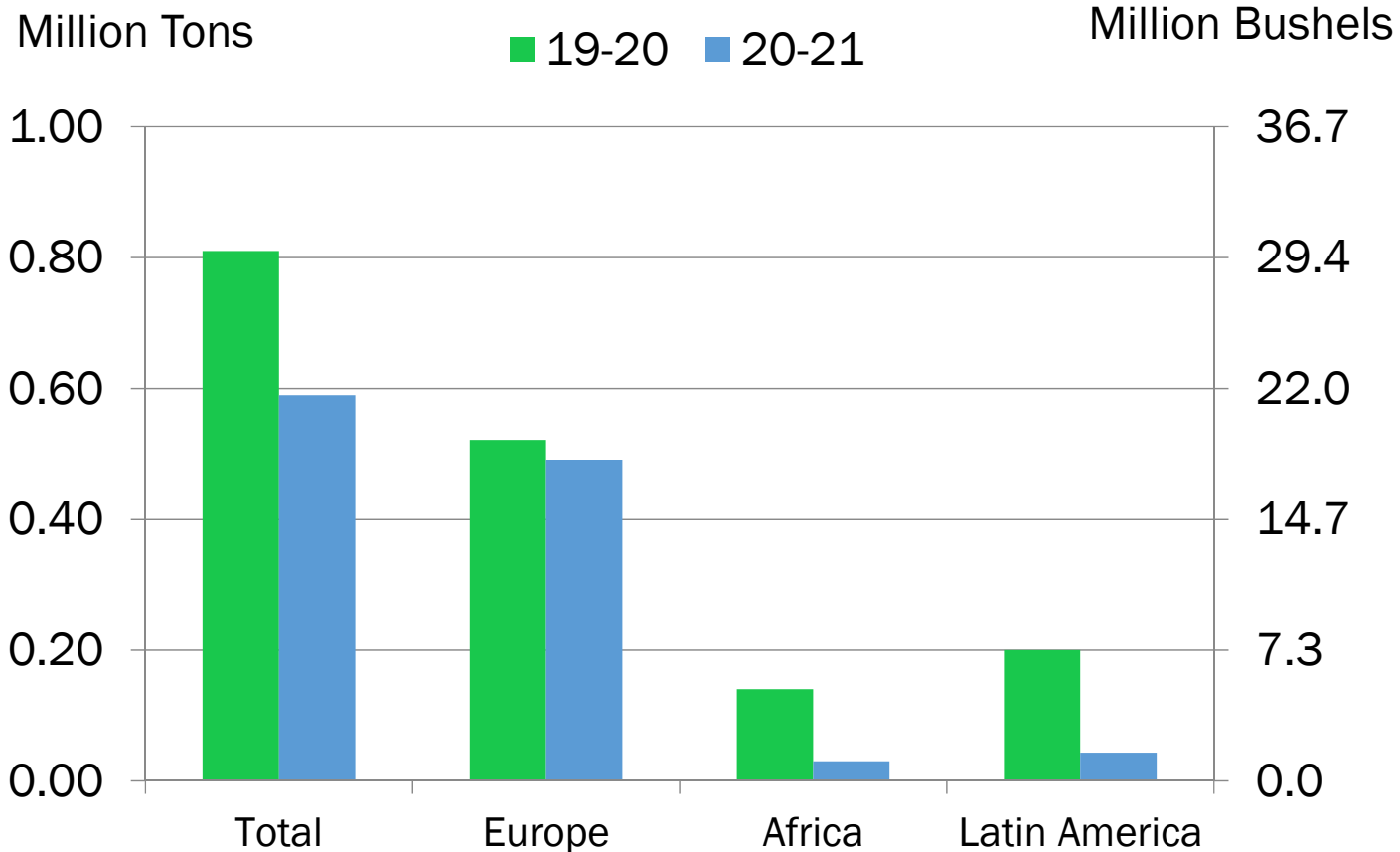


Source: USDA Small Grains Summary



EXPORT PACE – U.S. DURUM WHEAT

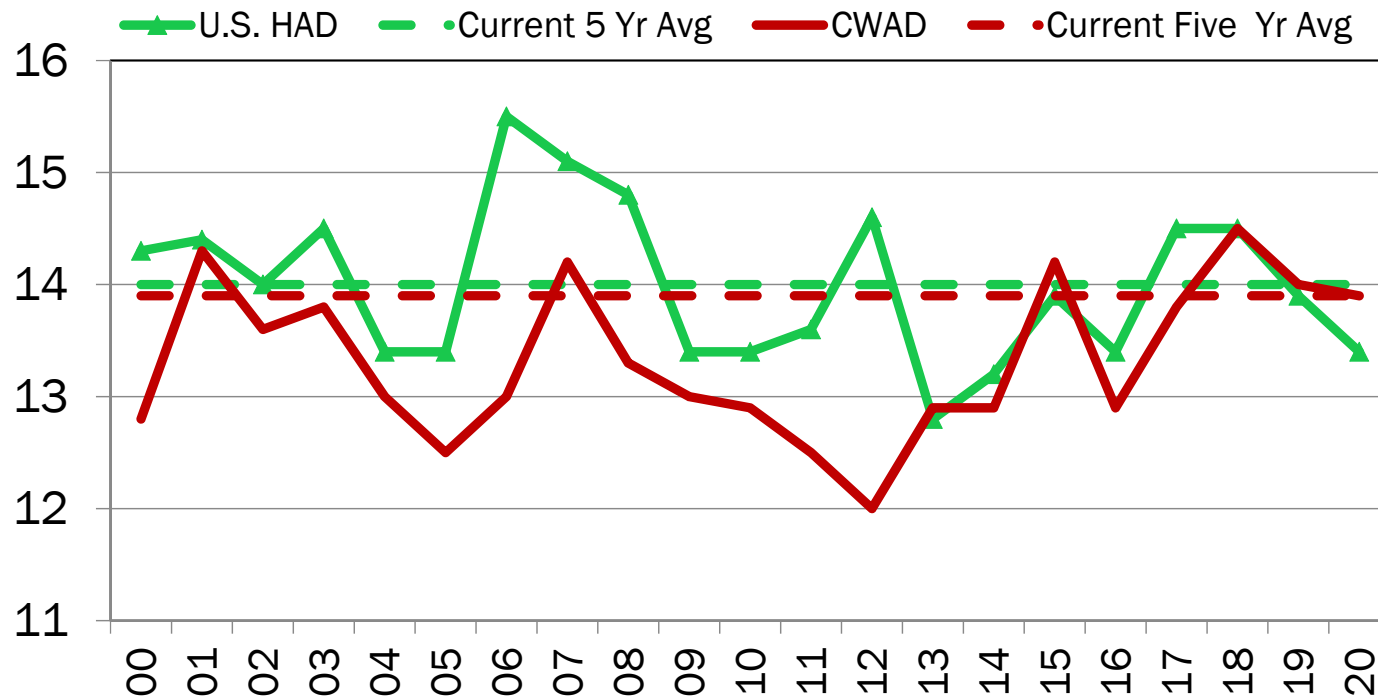
as of December 31, 2020



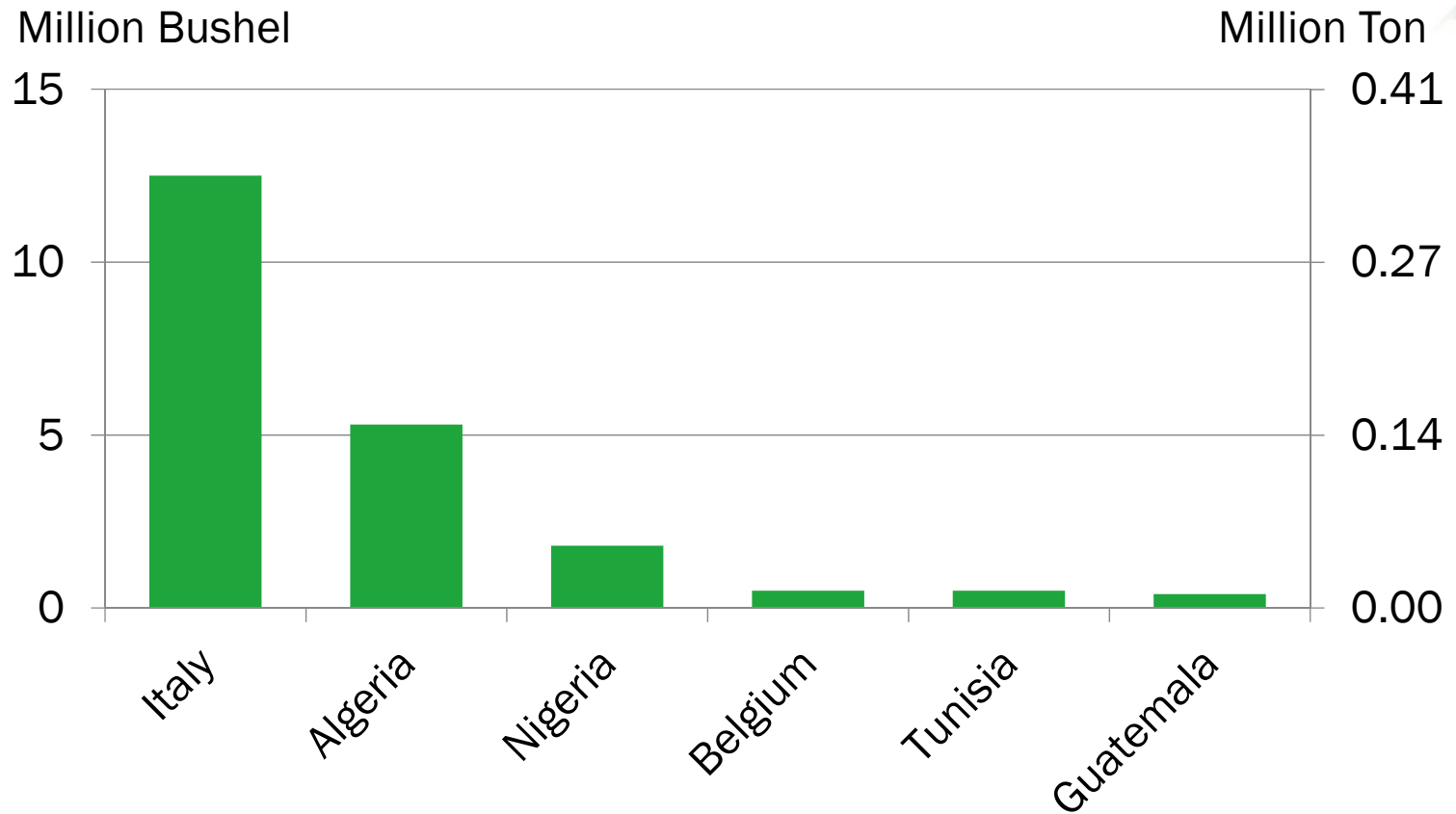
COMPARATIVE U.S. WHEAT PROTEIN

12% Moisture Basis

Protein Content

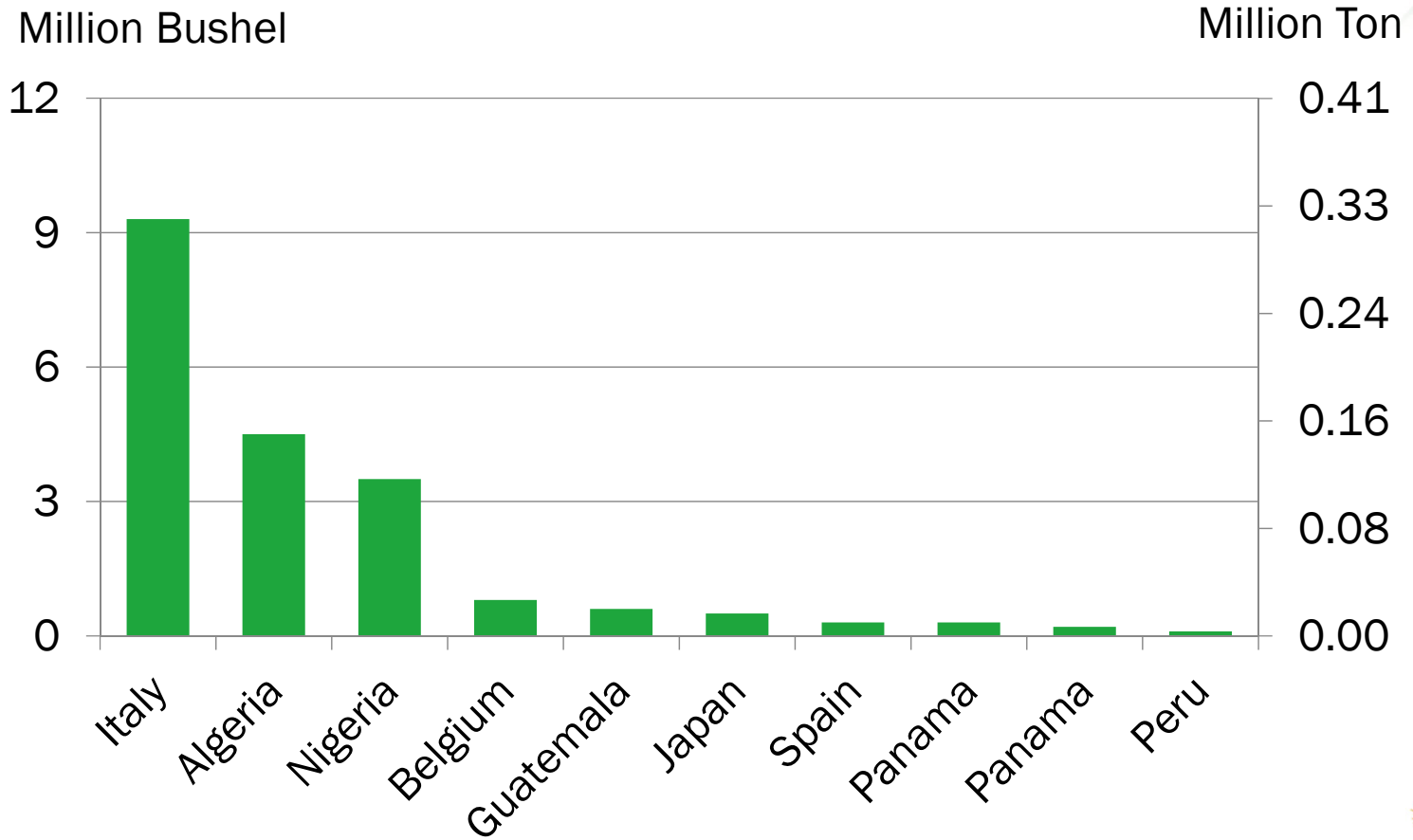


TOP IMPORTERS OF U.S. DURUM IN MARKETING YEAR 2019-20



TOP IMPORTERS OF U.S. DURUM

FIVE-YEAR AVERAGE (2015/16 – 2019/20)



EXPORT TRENDS – BY REGION

U.S. Durum Wheat

Million Bushel

Million Ton

