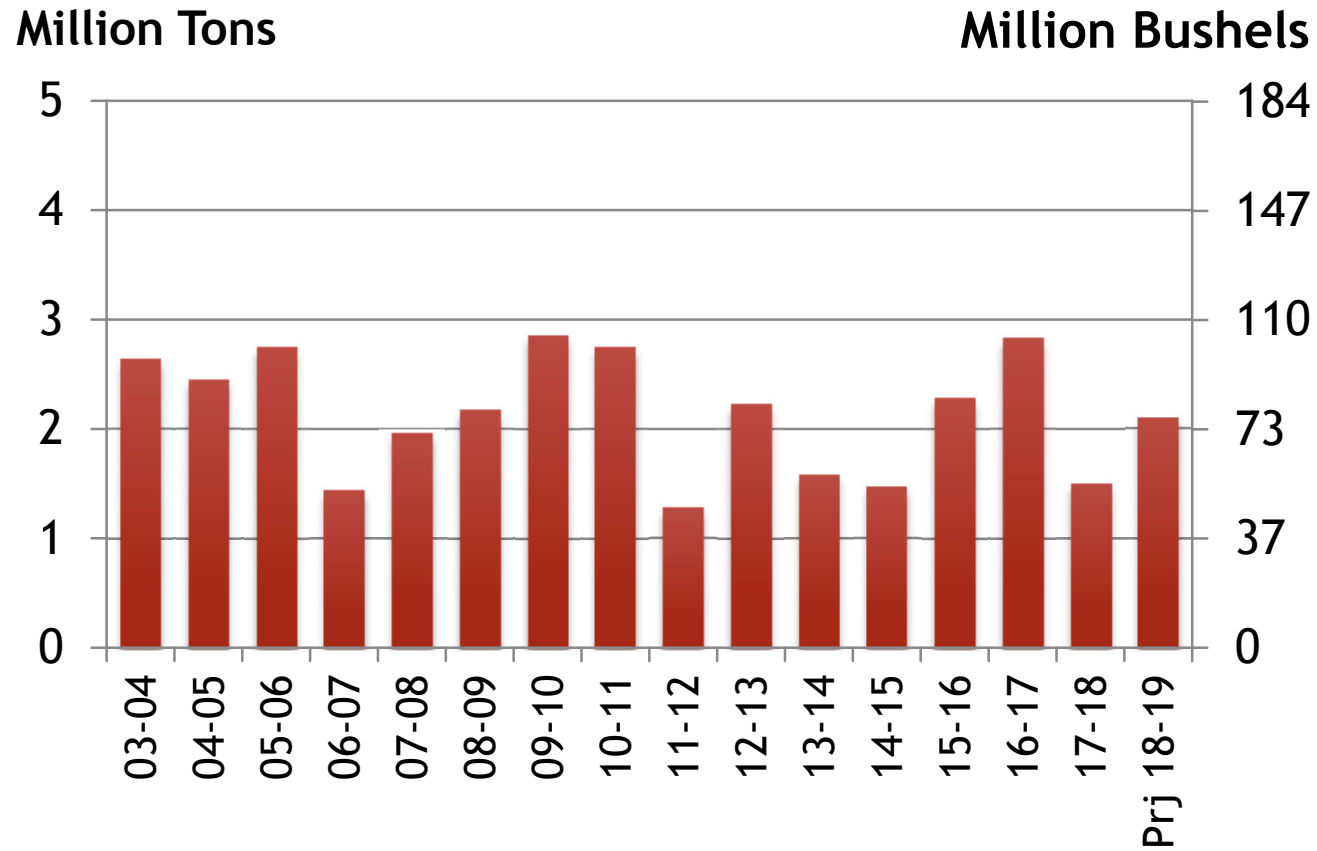
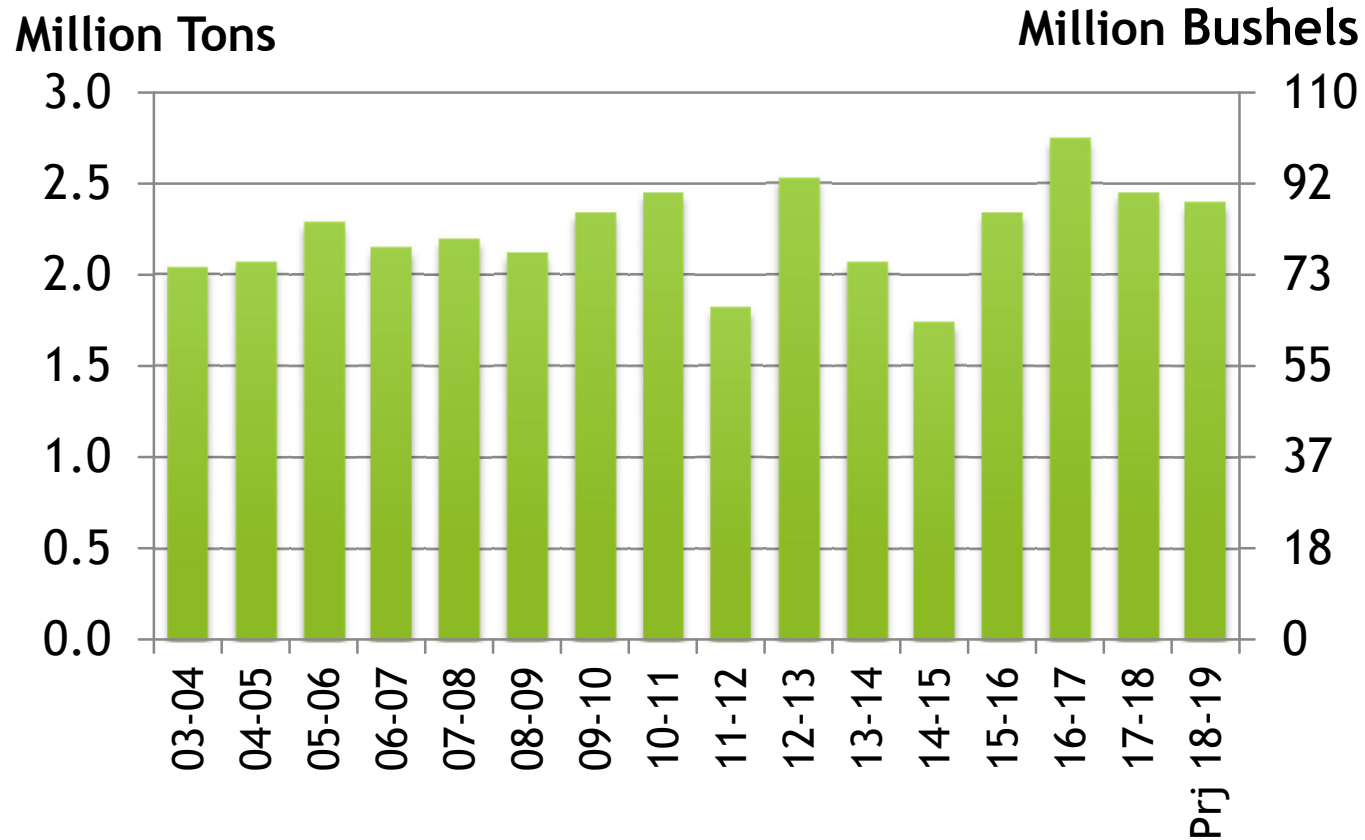


U.S. DURUM PRODUCTION



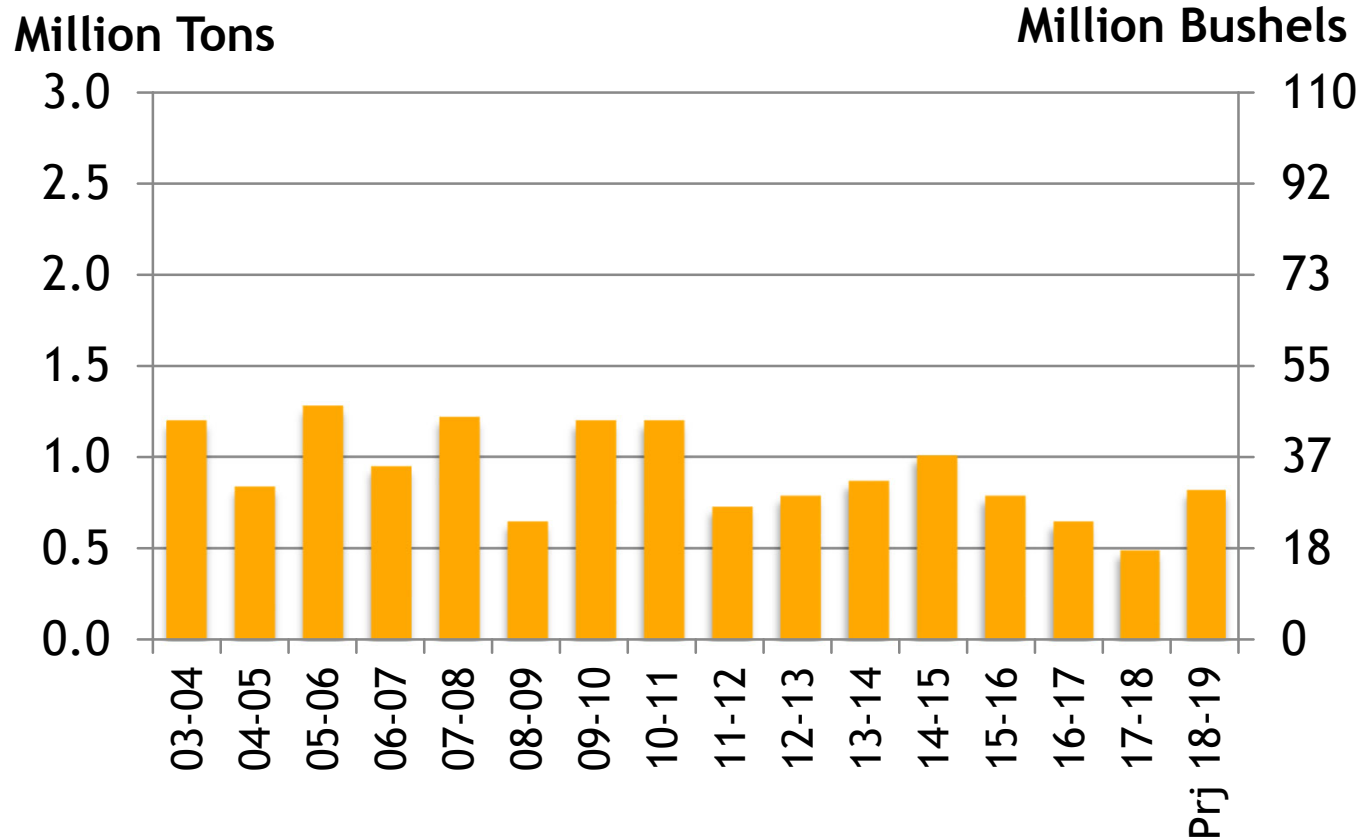
Source: USDA Dec 2018
Xldata/both/S&D prod, consump, carryover

U.S. DURUM DOMESTIC USE



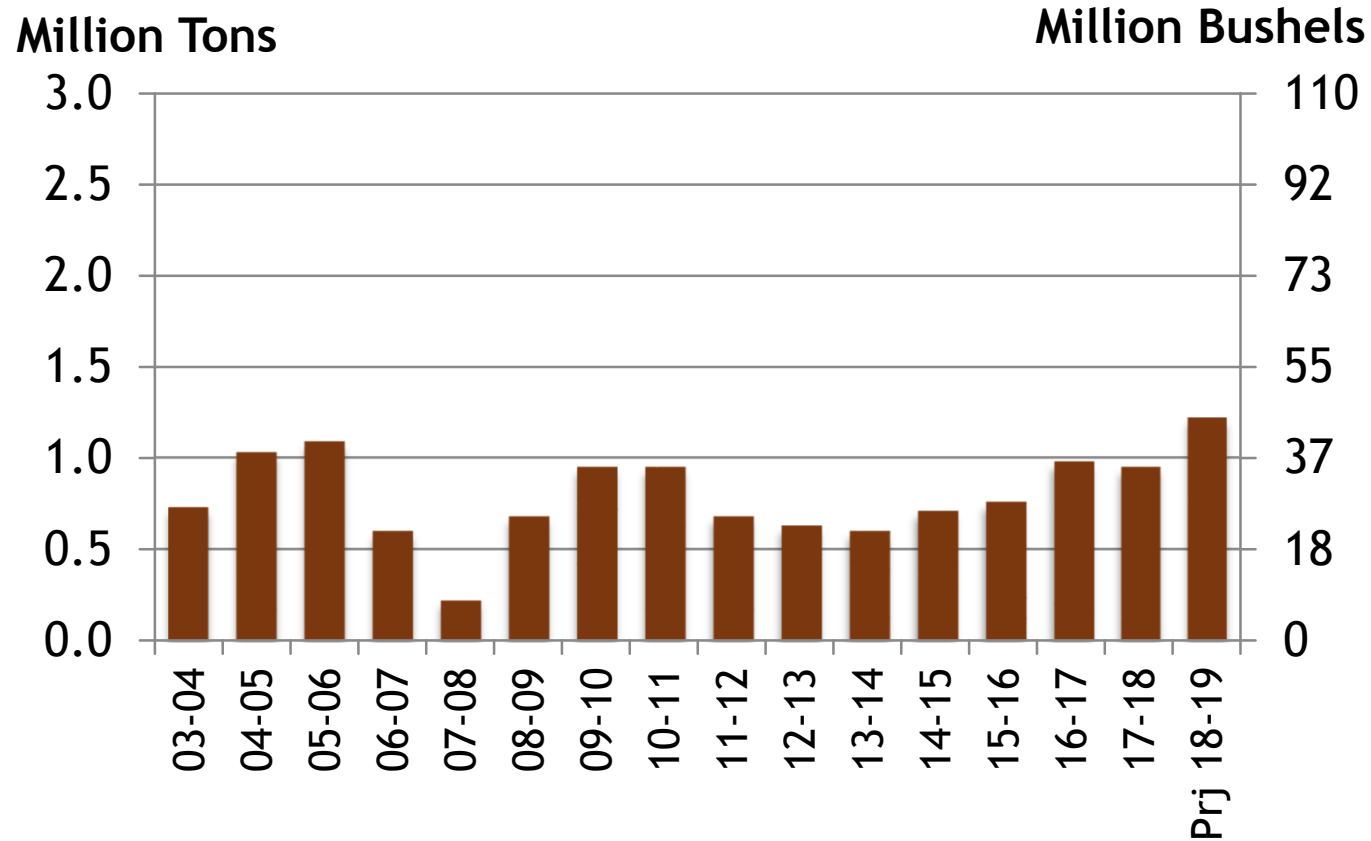
Source: USDA Dec 2018
Xldata/both/S&D prod, conump, carryover

U.S. DURUM EXPORTS



Source: USDA Dec 2018
Xldata/both/S&D prod, consump, carryover

U.S. DURUM STOCKS



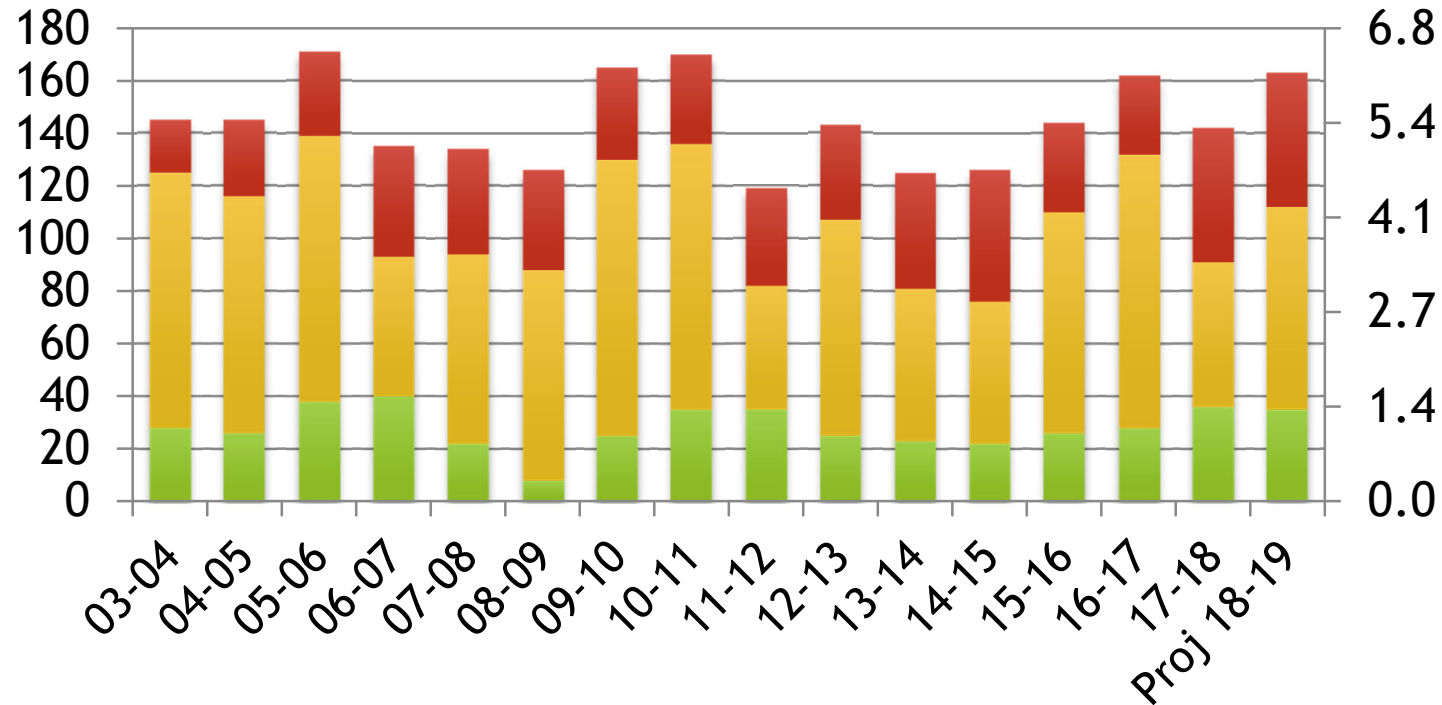
Source: USDA Dec 2018
Xldata/both/S&D prod, conump, carryover

DURUM SUPPLIES IN THE U.S.

Million Bushels

Million Tons

■ Beg Stocks ■ Production ■ Imports



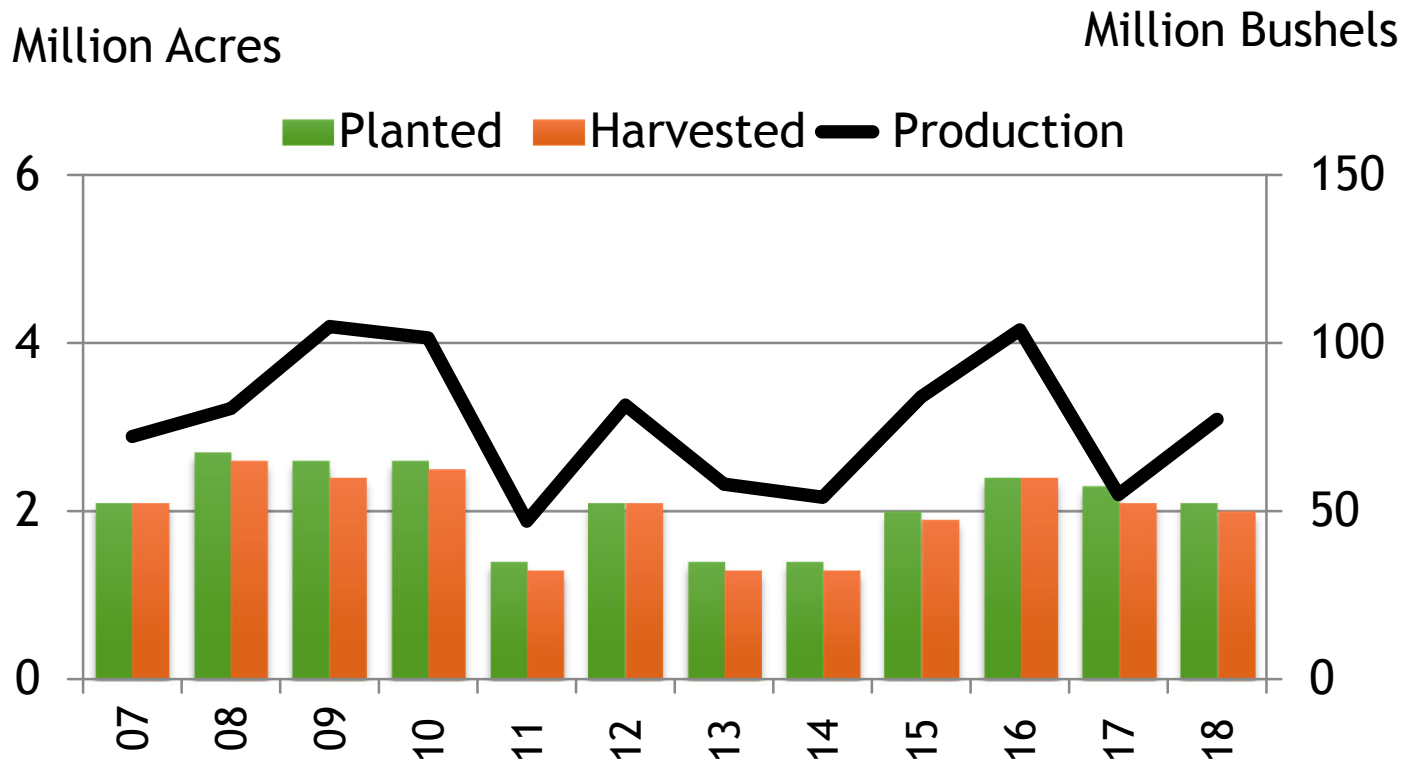
Source: USDA Dec 2018

U.S. DURUM WHEAT PRODUCTION

	Planted	Harvested	Yield	Production
2007	2.1	2.1	34.1	72.2
2008	2.7	2.6	31.3	80.5
2009	2.6	2.4	44.0	104.9
2010	2.6	2.5	41.2	101.5
2011	1.4	1.3	36.8	47.0
2012	2.1	2.1	38.4	81.5
2013	1.4	1.3	43.3	58.0
2014	1.4	1.3	40.2	54.1
2015	2.0	1.9	44.0	84.0
2016	2.4	2.4	44.0	103.9
2017	2.3	2.1	25.7	54.9
2018	2.1	2.0	39.3	77.3
5 Yr Avg	1.8	1.8	42.0	76.3
10 Yr Avg	2.1	2.0	39.7	78.8

Acres-Bushels

U.S. DURUM WHEAT PLANTINGS & PRODUCTION



Source: USDA Small Grains Summary
Xldata/durum/acres

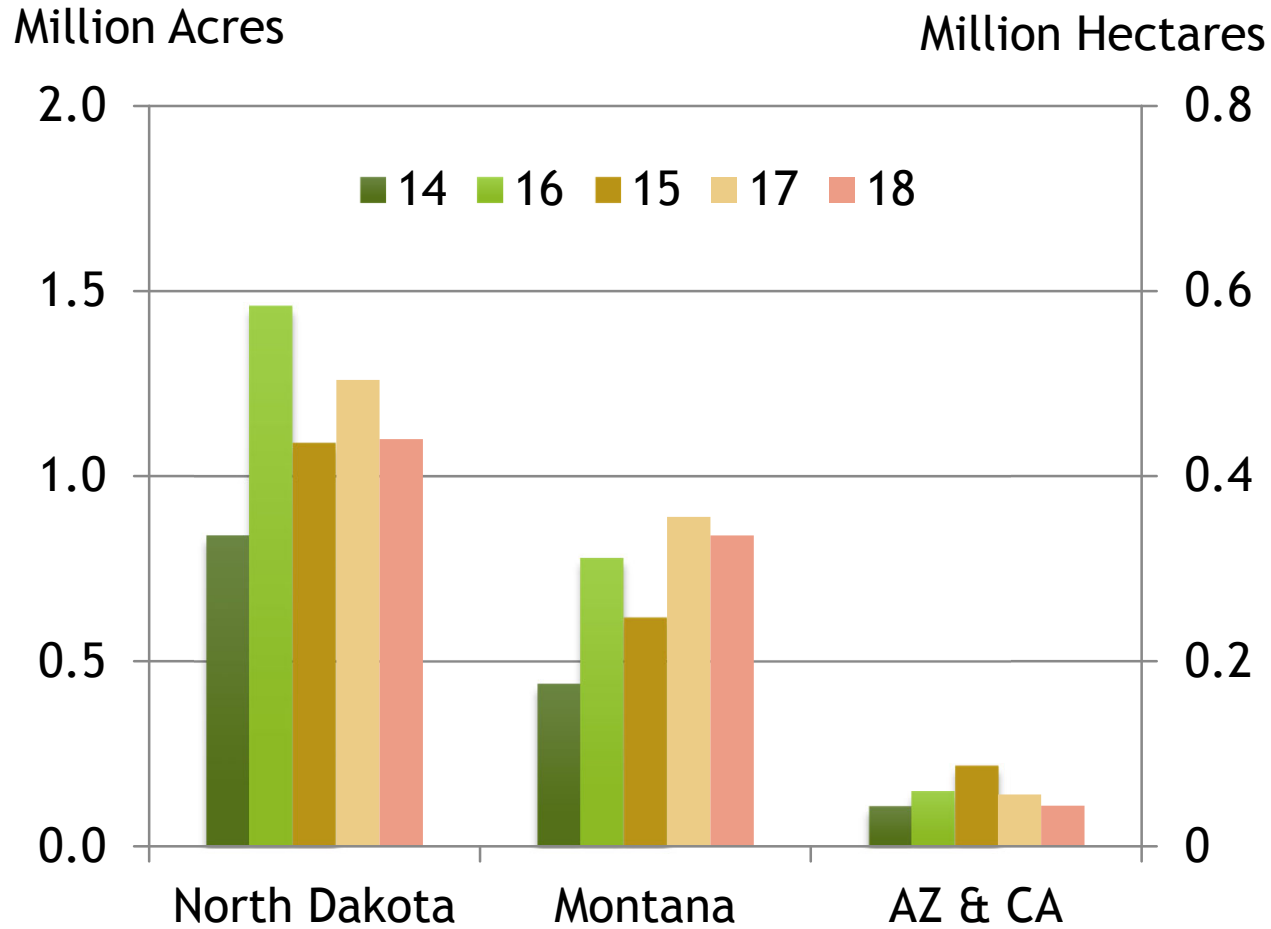
U.S. DURUM SUPPLY & DEMAND

Million Bushels

	13-14	14-15	15-16	16-17	17-18	Proj 18-19	Change
Beg Stocks	23	22	26	28	36	35	-3%
Production	58	54	84	104	55	77	+40%
Imports	44	50	34	30	51	51	0%
Tot Supply	125	126	144	162	142	163	+15%
Dom Use	76	64	86	101	90	88	-2%
Exports	32	37	30	24	18	30	+67%
Tot Use	108	101	116	126	107	118	+10%
End Stocks	22	26	28	36	35	45	+29%
S/U Ratio	20%	26%	24%	29%	33%	38%	

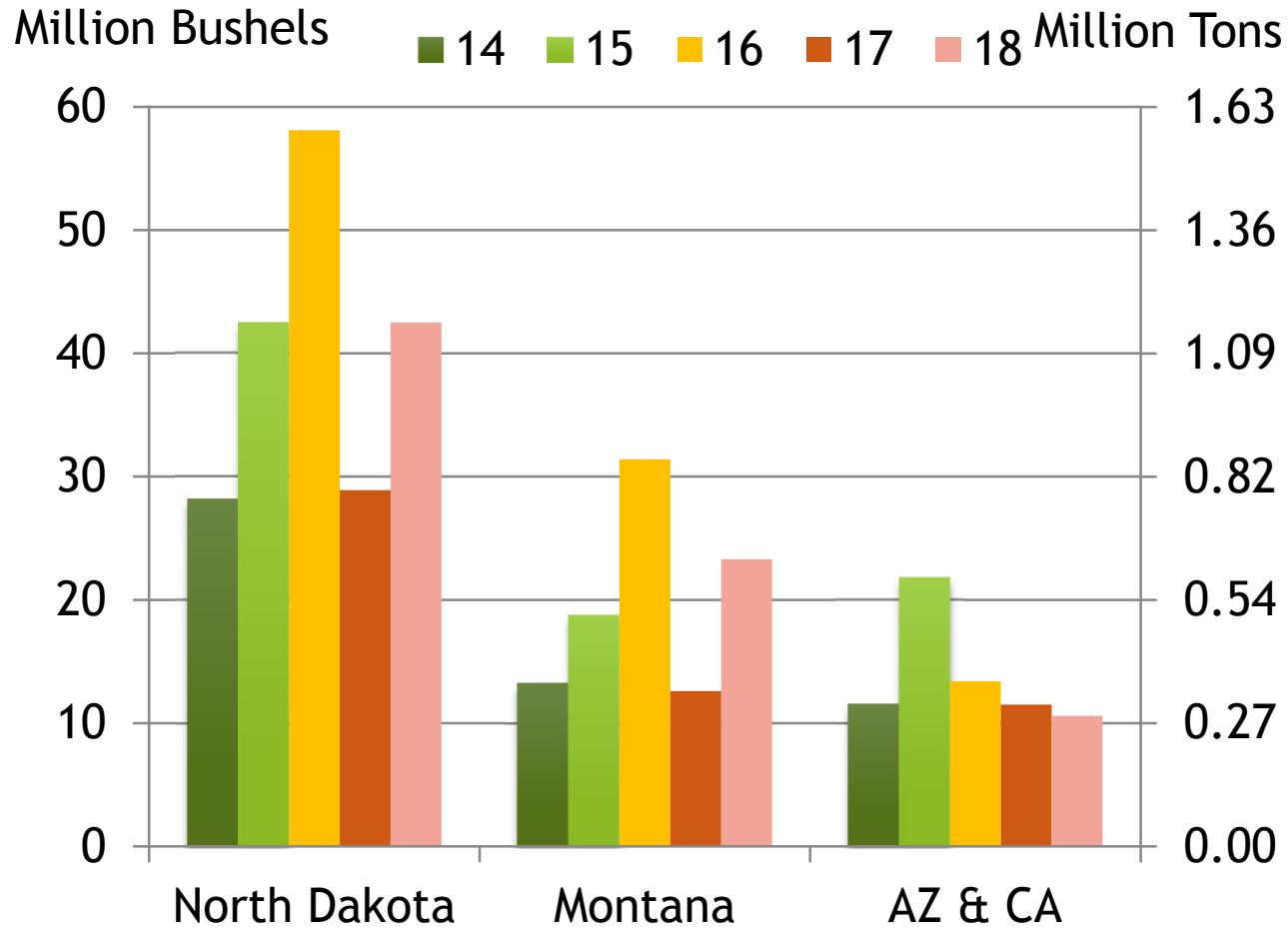
Source: USDA Dec 2018
Xldata/durum/S&D

U.S. DURUM WHEAT PLANTINGS BY STATE



Source: USDA Small Grains Summary

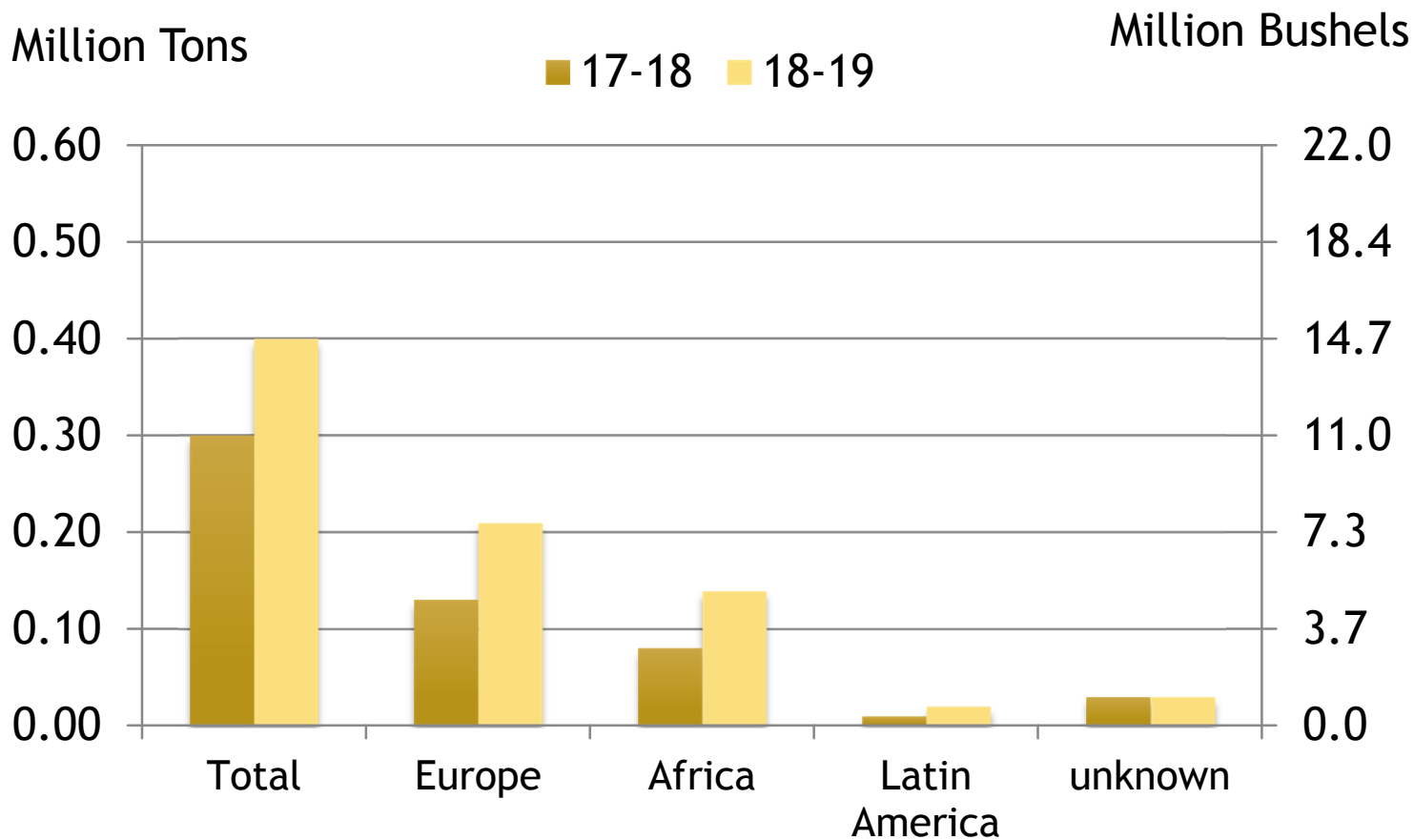
U.S. DURUM WHEAT PRODUCTION BY STATE



Source: USDA Aug 18

EXPORT PACE - U.S. DURUM WHEAT

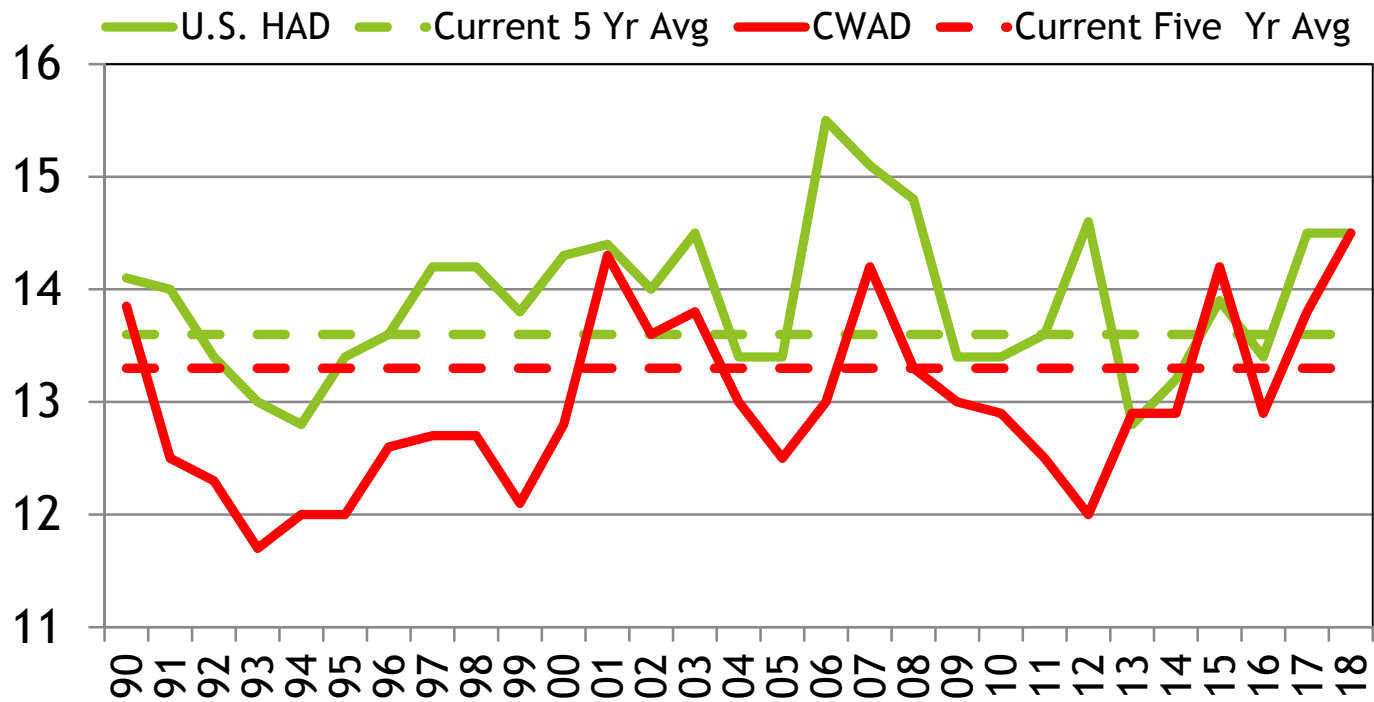
as of November 29, 2018



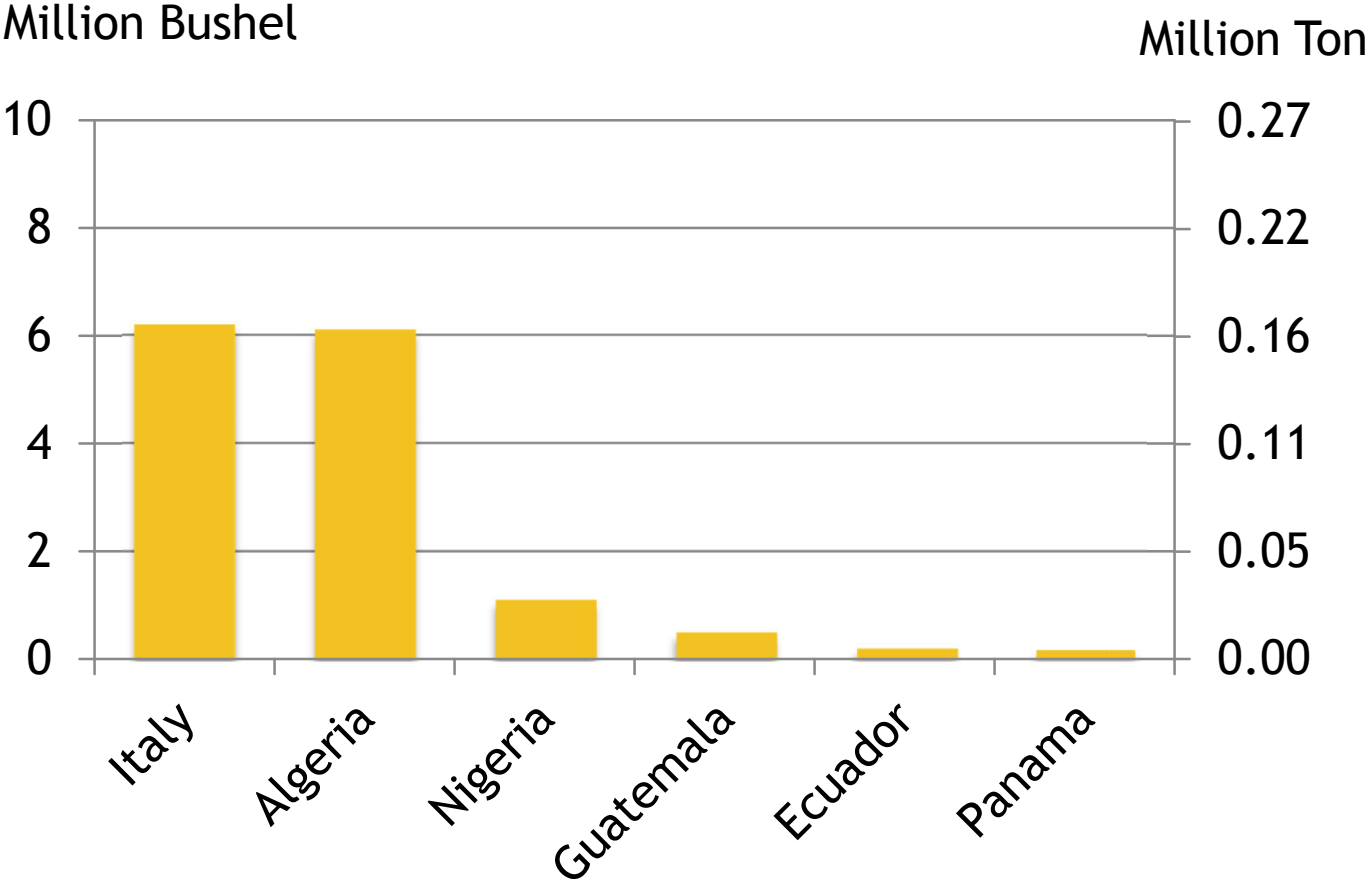
COMPARATIVE U.S. WHEAT PROTEIN

12% Moisture Basis

Protein Content



TOP IMPORTERS OF U.S. DURUM IN MARKETING YEAR 2017-18

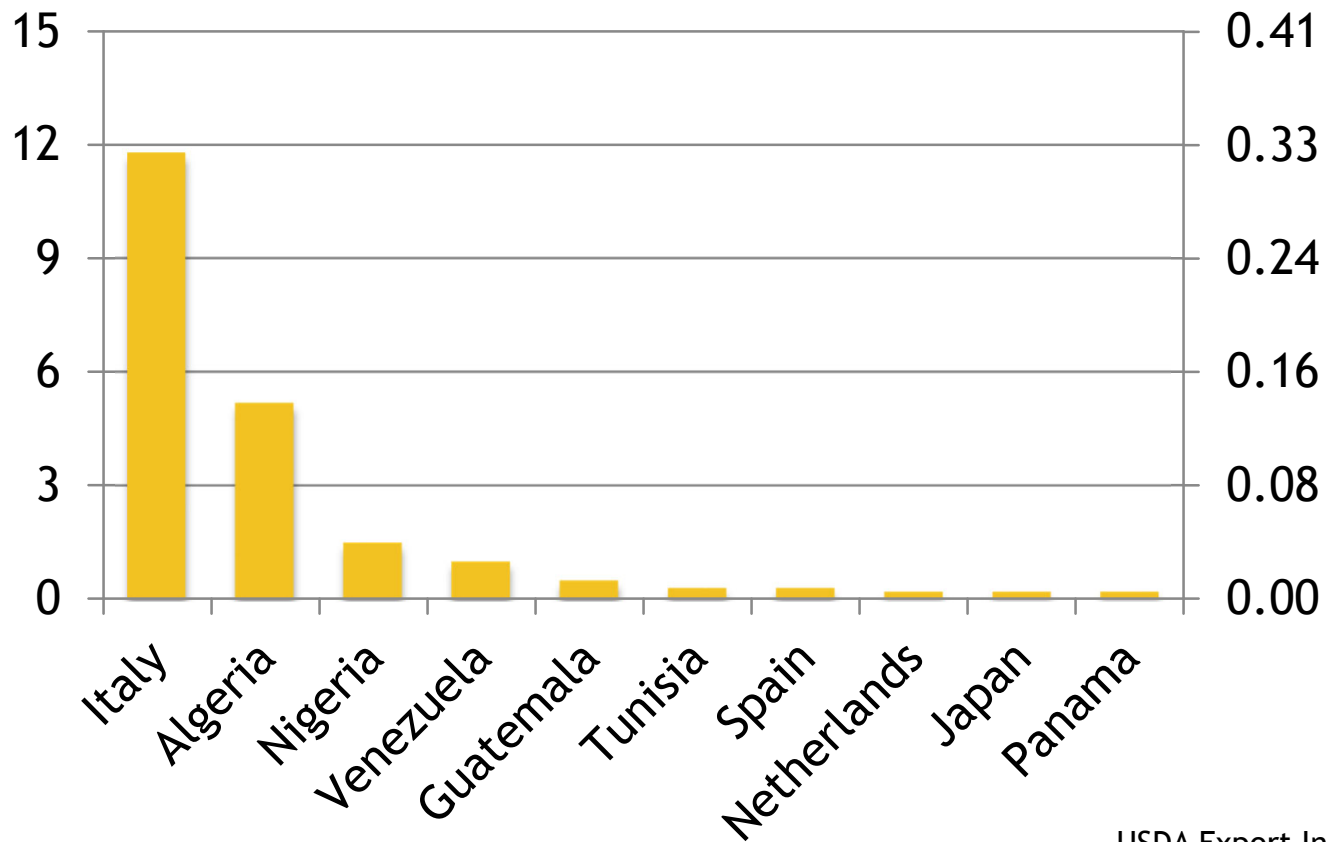


USDA Export Inspections
Xldata/Both/Exports/Top 10 & 5 yr avg

TOP IMPORTERS OF U.S. DURUM FIVE-YEAR AVERAGE (2013/14 - 2017/18)

Million Bushel

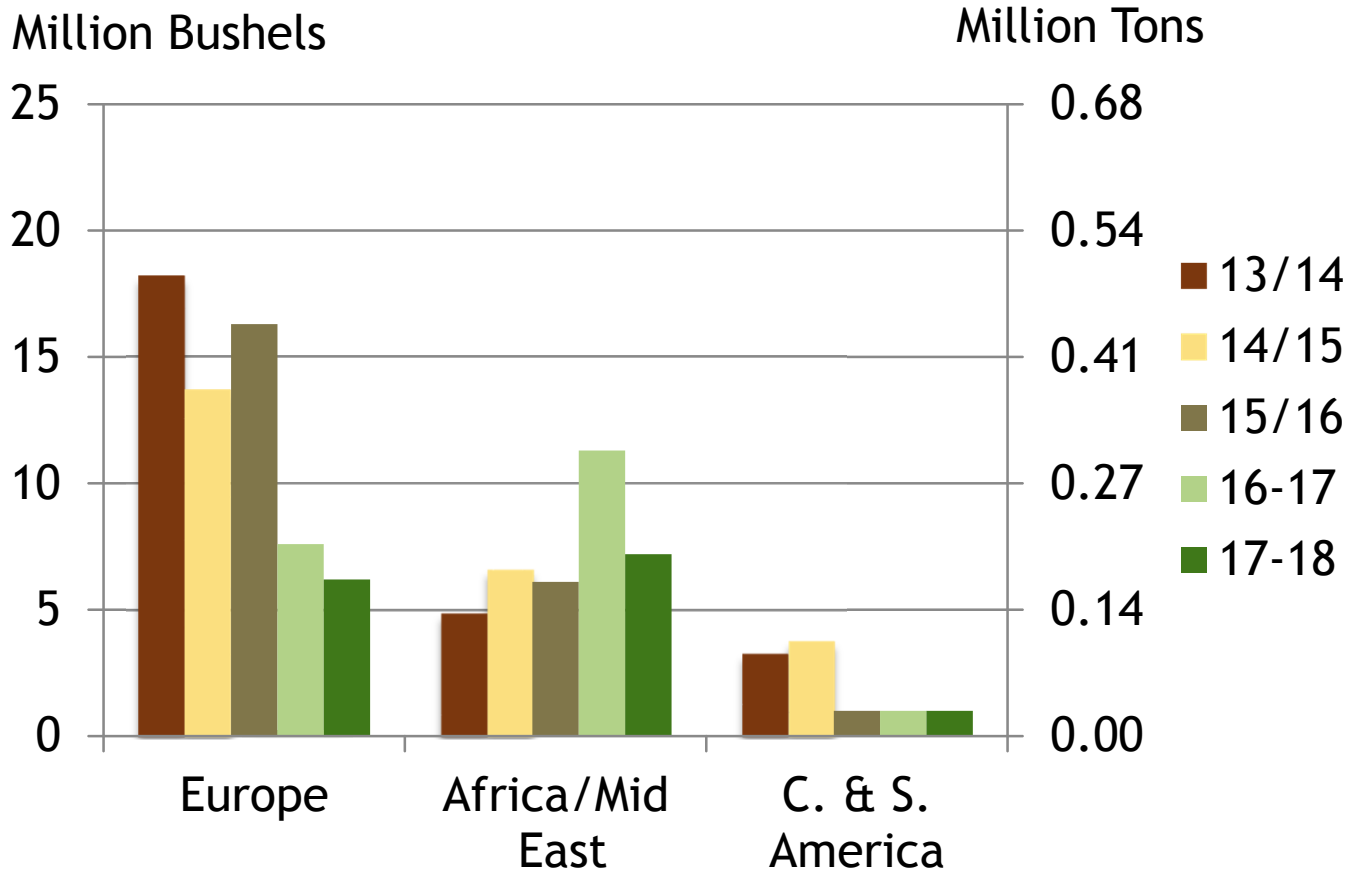
Million Ton



USDA Export Inspections
Xldata/Both/Exports/Top 10 & 5 yr avg

EXPORT TRENDS - BY REGION

U.S. Durum Wheat



EXPORT TRENDS - LATIN AMERICA

U.S. Durum Wheat

