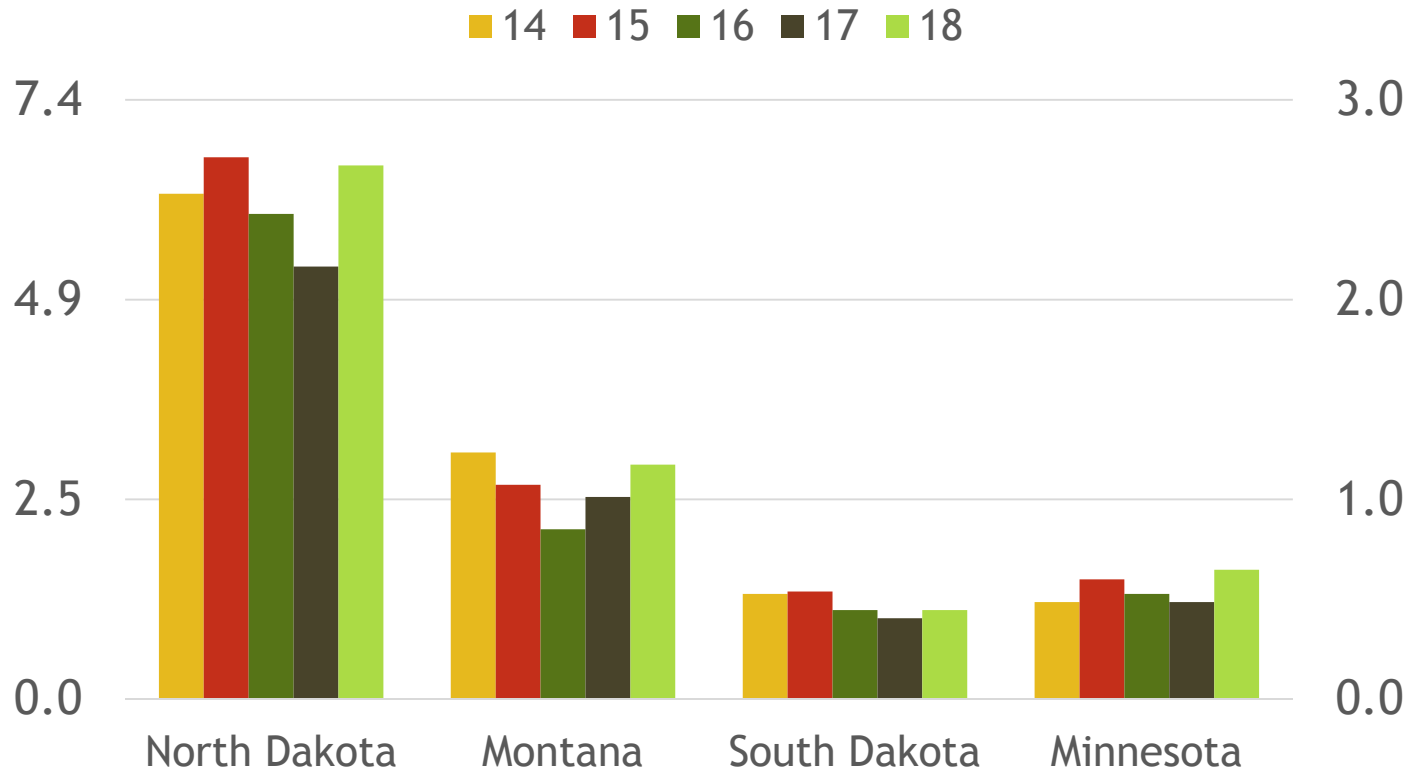


# U.S. SPRING WHEAT PLANTINGS BY STATE

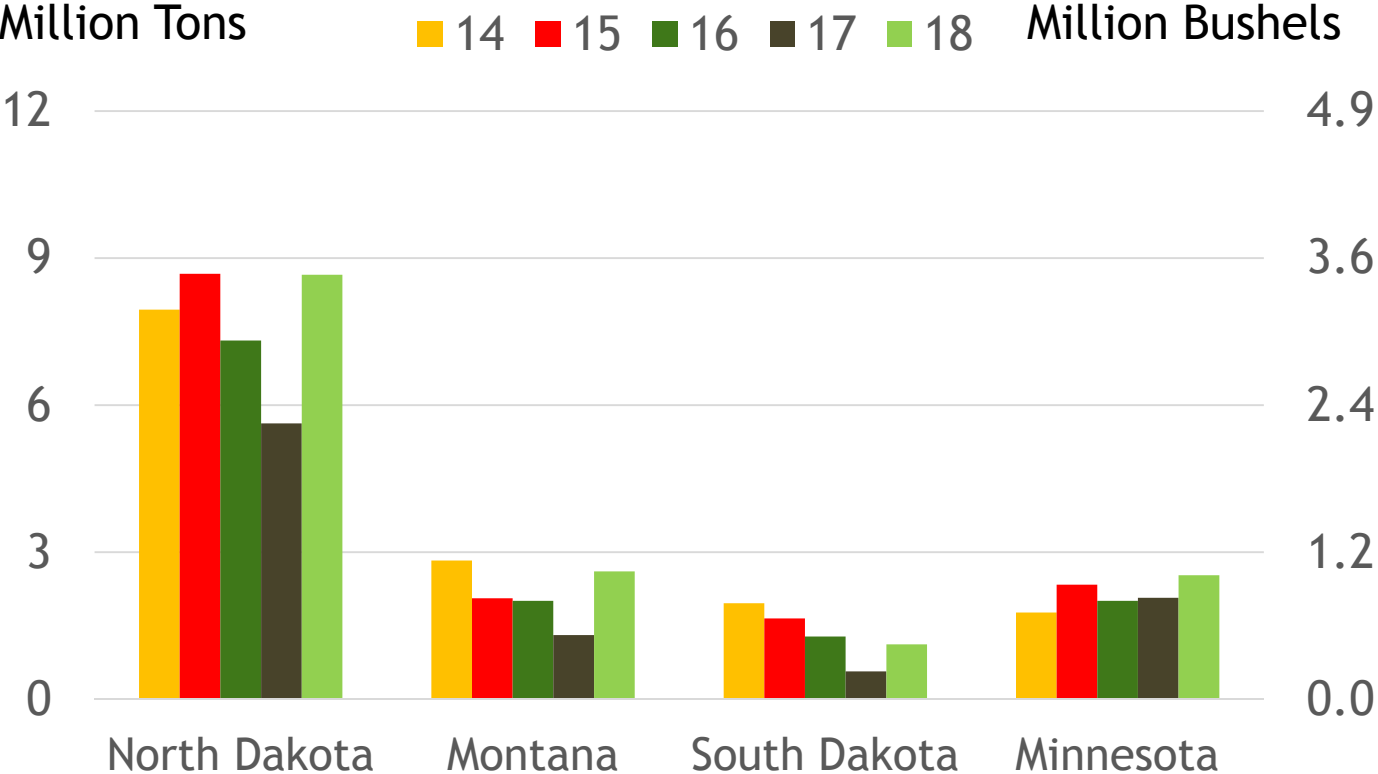
Million Acres

Million Hectares

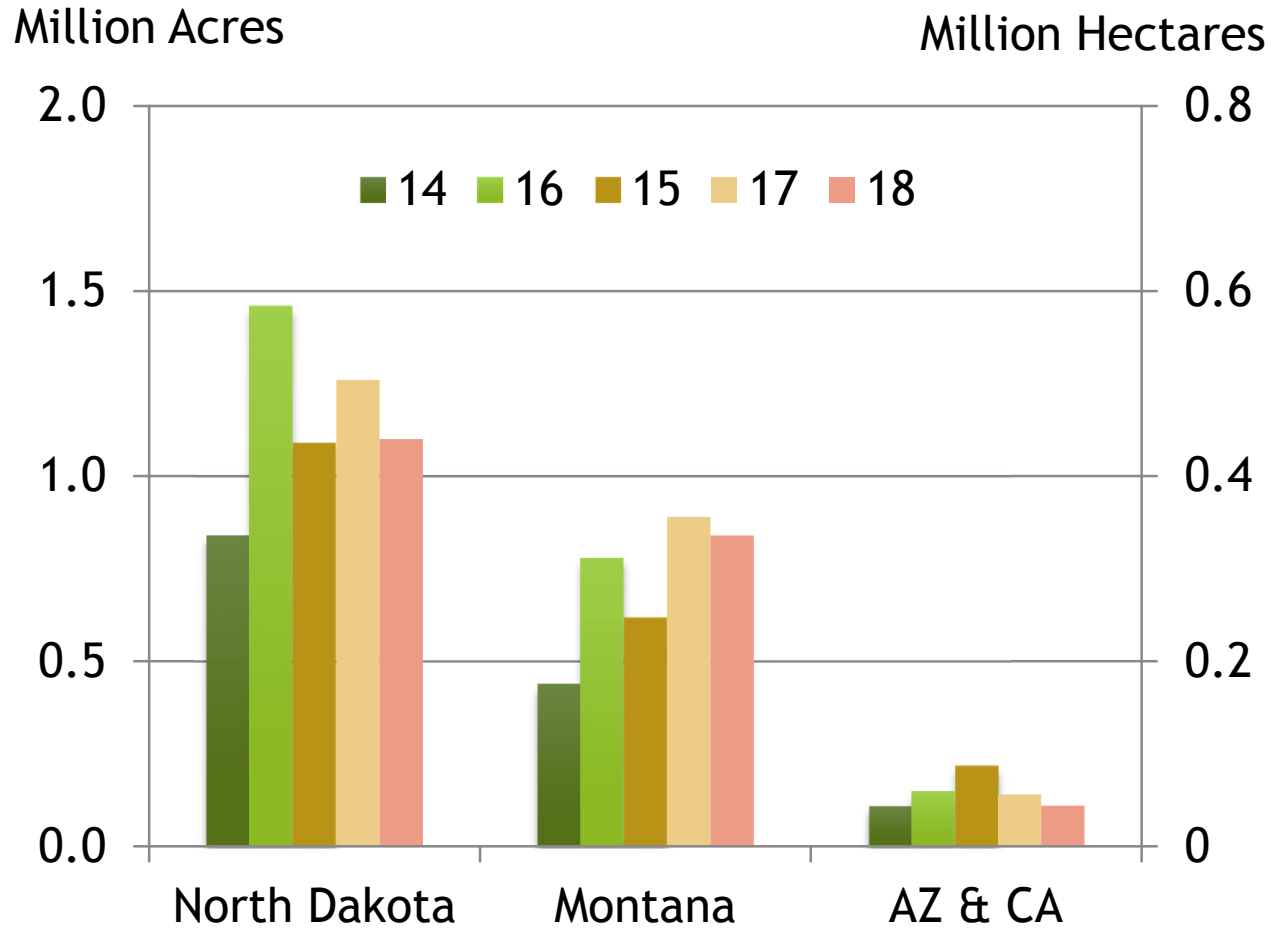


Source: USDA Small Grains Summary

# U.S. SPRING WHEAT PRODUCTION BY STATE

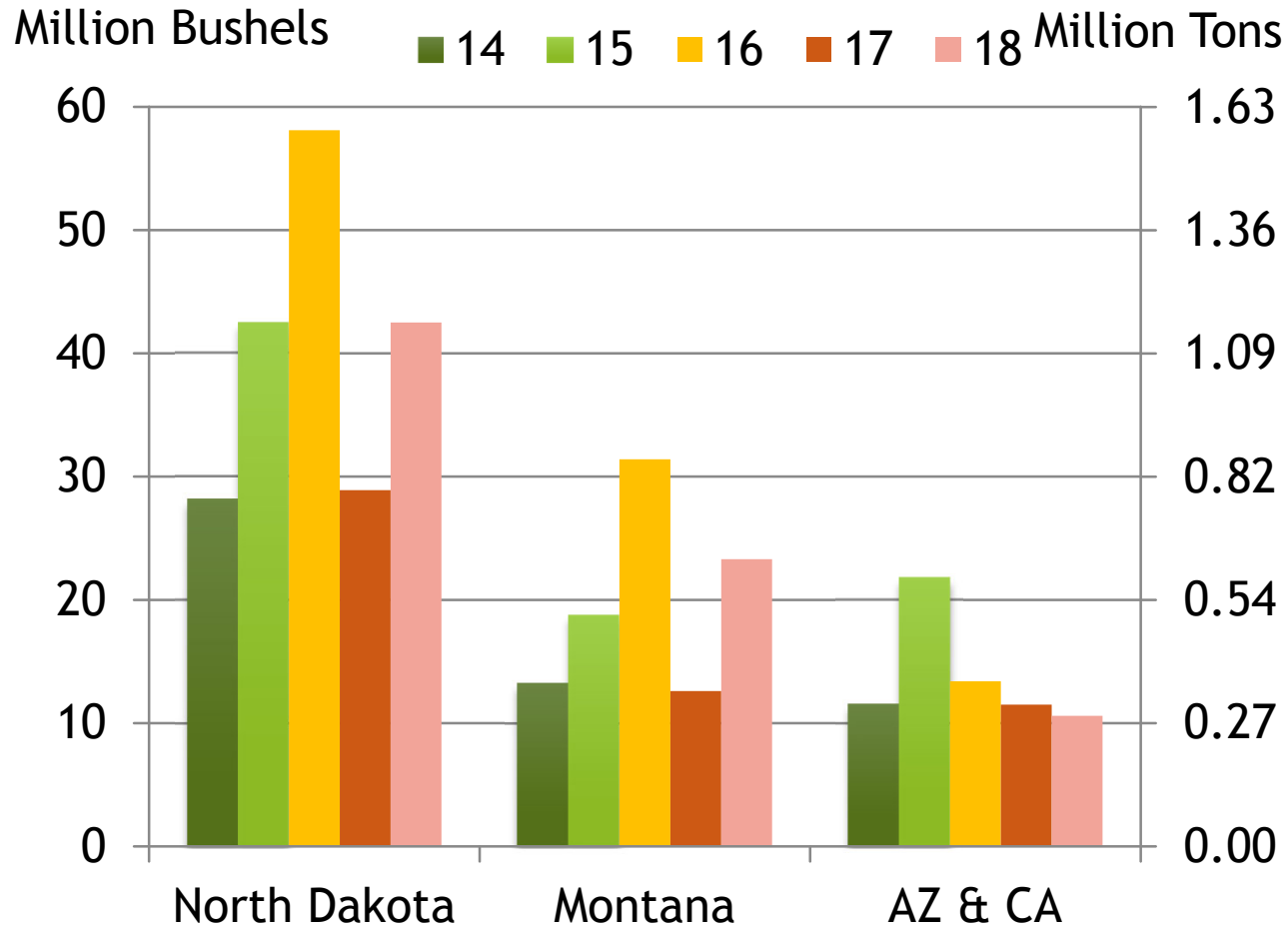


# U.S. DURUM WHEAT PLANTINGS BY STATE



Source: USDA Small Grains Summary

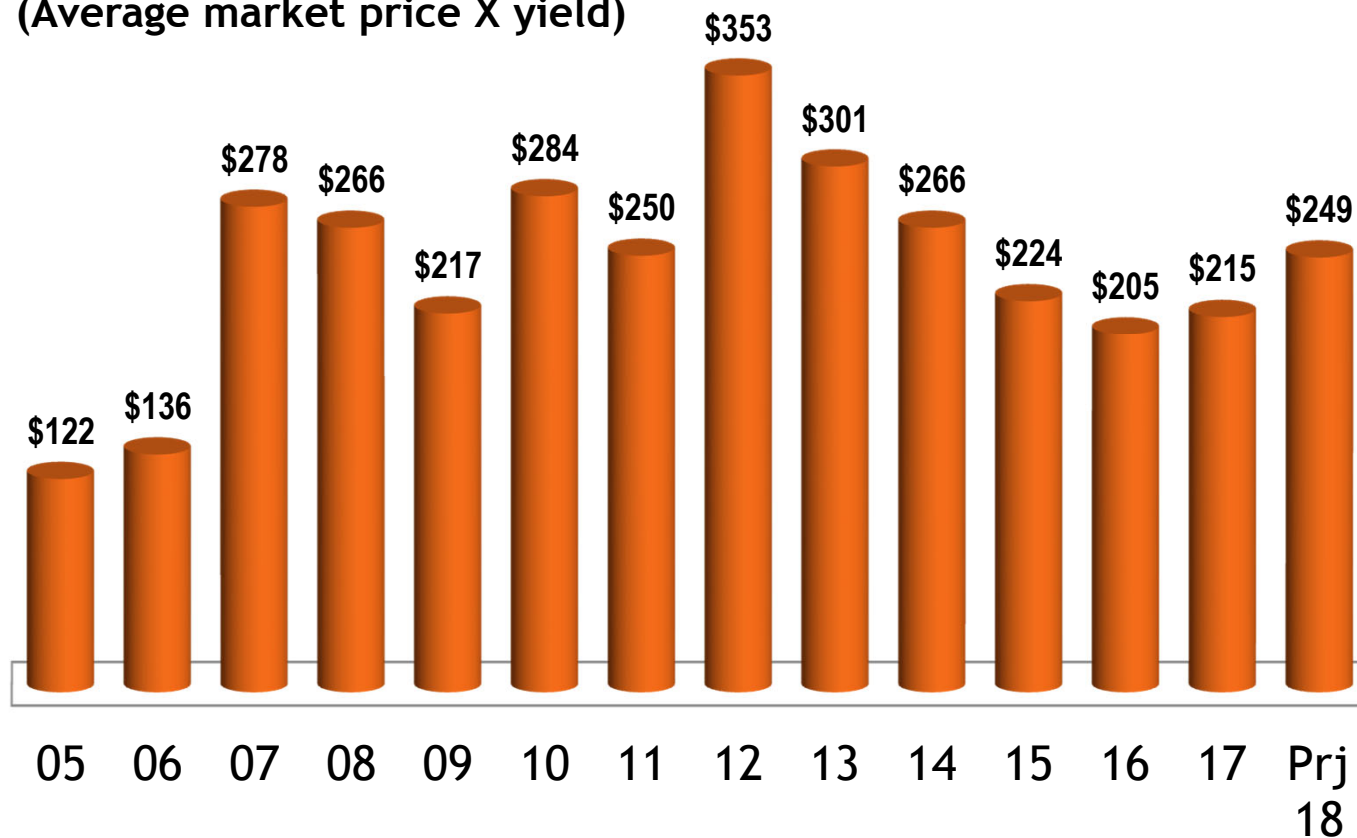
# U.S. DURUM WHEAT PRODUCTION BY STATE



Source: USDA Small Grains Summary

# N.D. WHEAT AVERAGE GROSS RETURN PER ACRE (Million Acres)

Per harvested acre  
(Average market price X yield)



Source: N.D. Agricultural Statistics Service

# VALUE of ND ALL WHEAT CROP (gross)

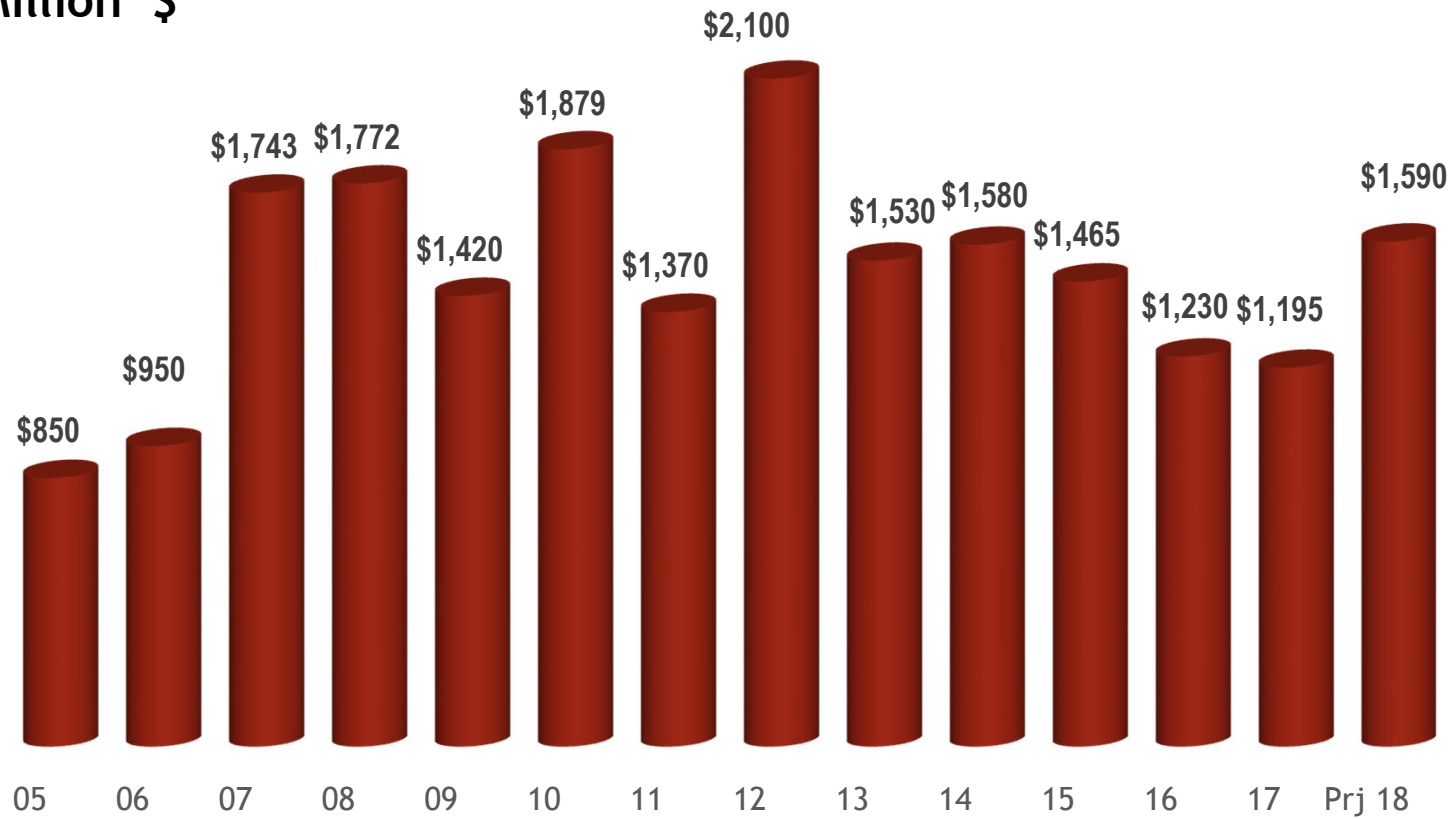
Million \$



Source: ND Agricultural Statistics Service

# VALUE of ND SPRING WHEAT CROP (gross)

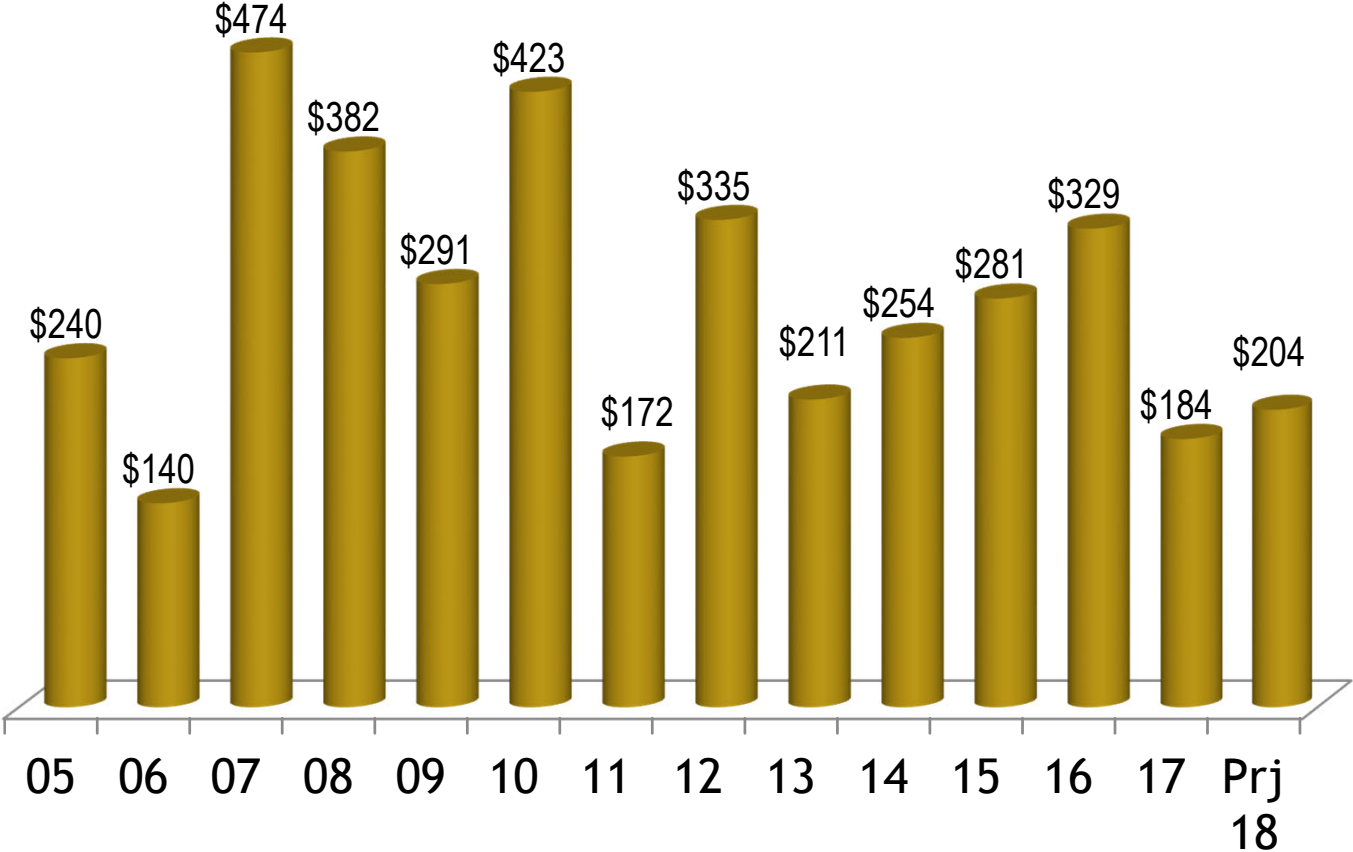
Million \$



Source: ND Agricultural Statistics Service

# VALUE of ND DURUM WHEAT CROP (gross)

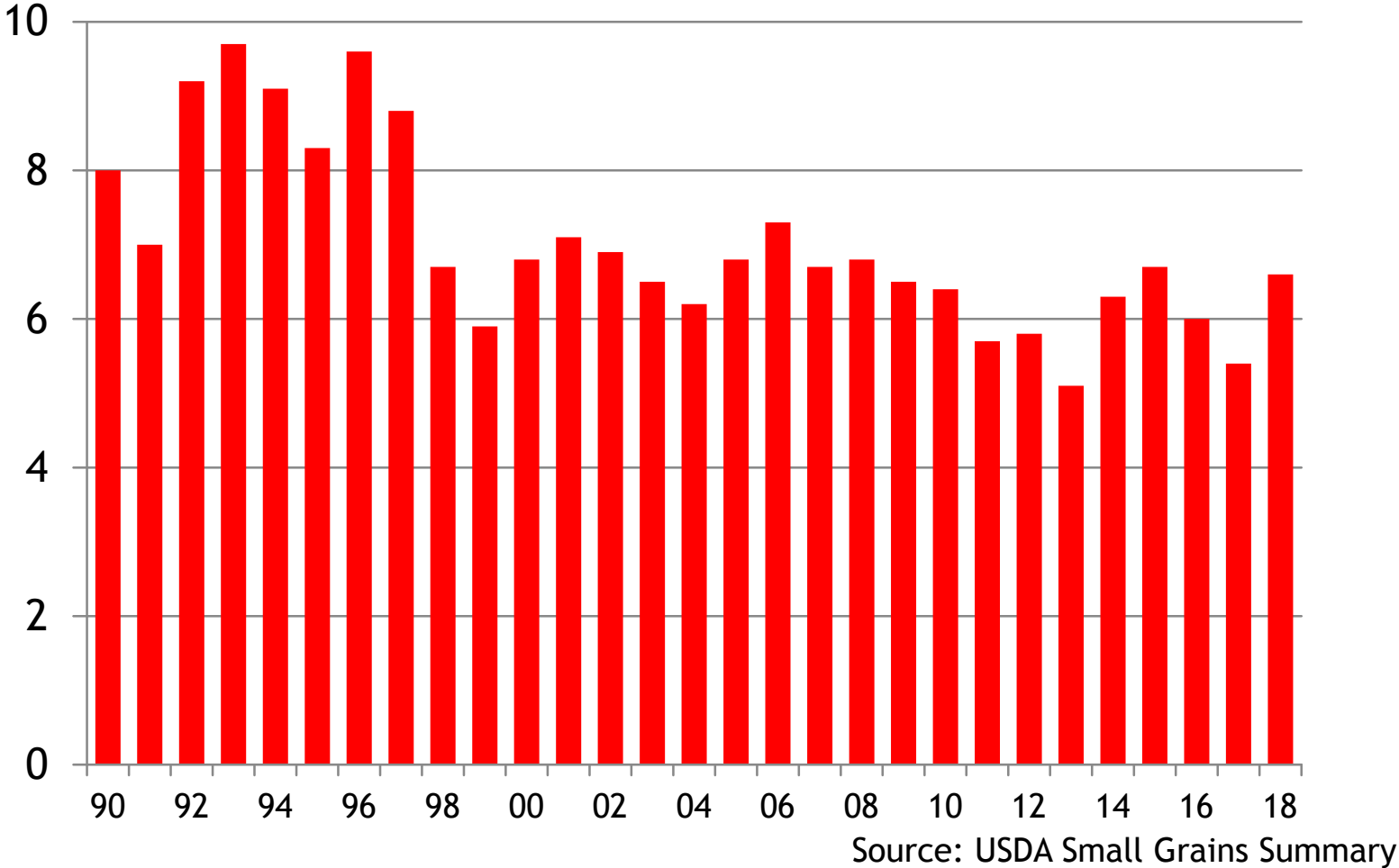
Million \$



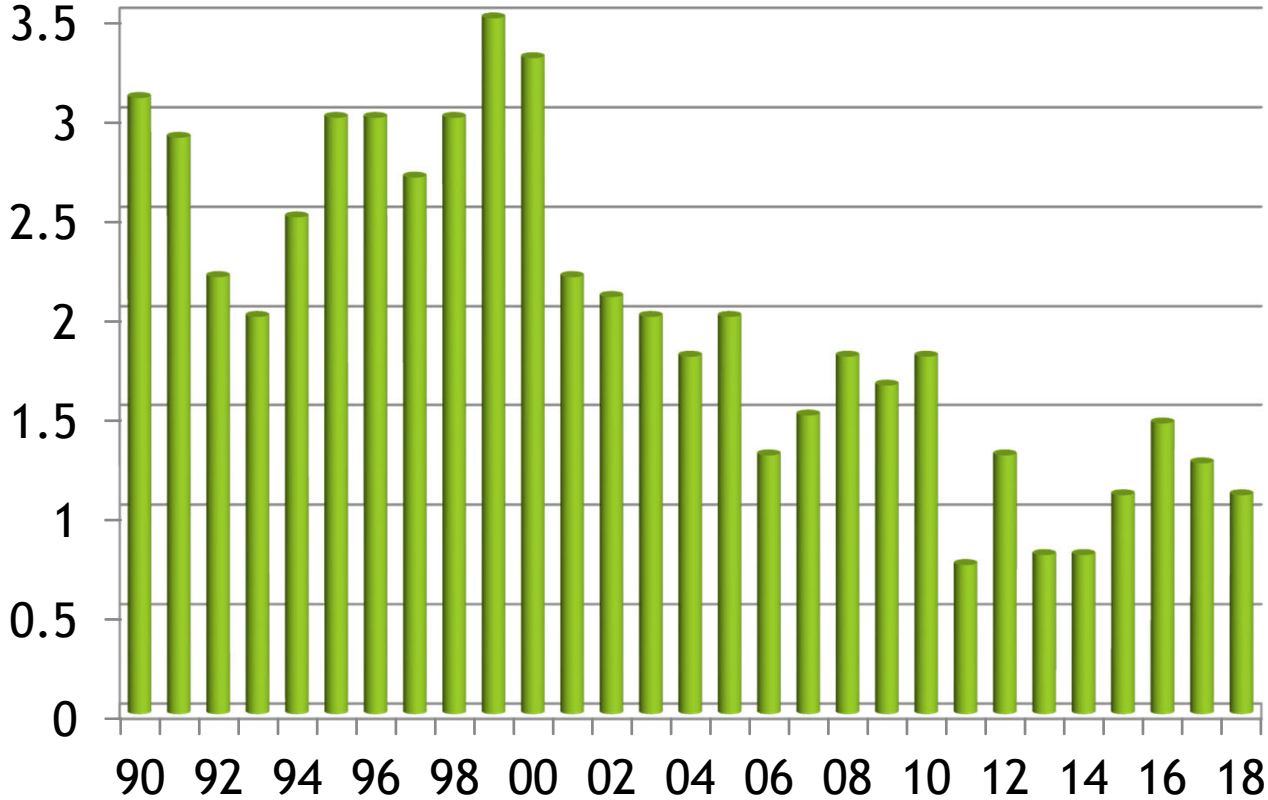
Source: ND Agricultural Statistics Service



# NORTH DAKOTA PLANTINGS OF HARD RED SPRING WHEAT (Million Acres)



# NORTH DAKOTA PLANTINGS OF DURUM WHEAT (Million Acres)



Source: USDA Small Grains Summary

# North Dakota



- Population of 740,000
- 90% of land is in crop production or ranch land
- Major industries are agriculture, oil and gas exploration, energy and manufacturing

# North Dakota Agriculture

- ▶ North Dakota has diverse crop production
- ▶ Top producer of many crops
- ▶ Over 20 crops in production
  - ▶ Most producers grow 3-10 crops
- ▶ Wheat is one of the largest crops in the state, accounting for one-fourth of crop acreage and one-third of total farm revenue
- ▶ Other major crops are soybeans, corn, barley, canola, sunflower, sugar beets, dry peas, dry beans, flaxseed

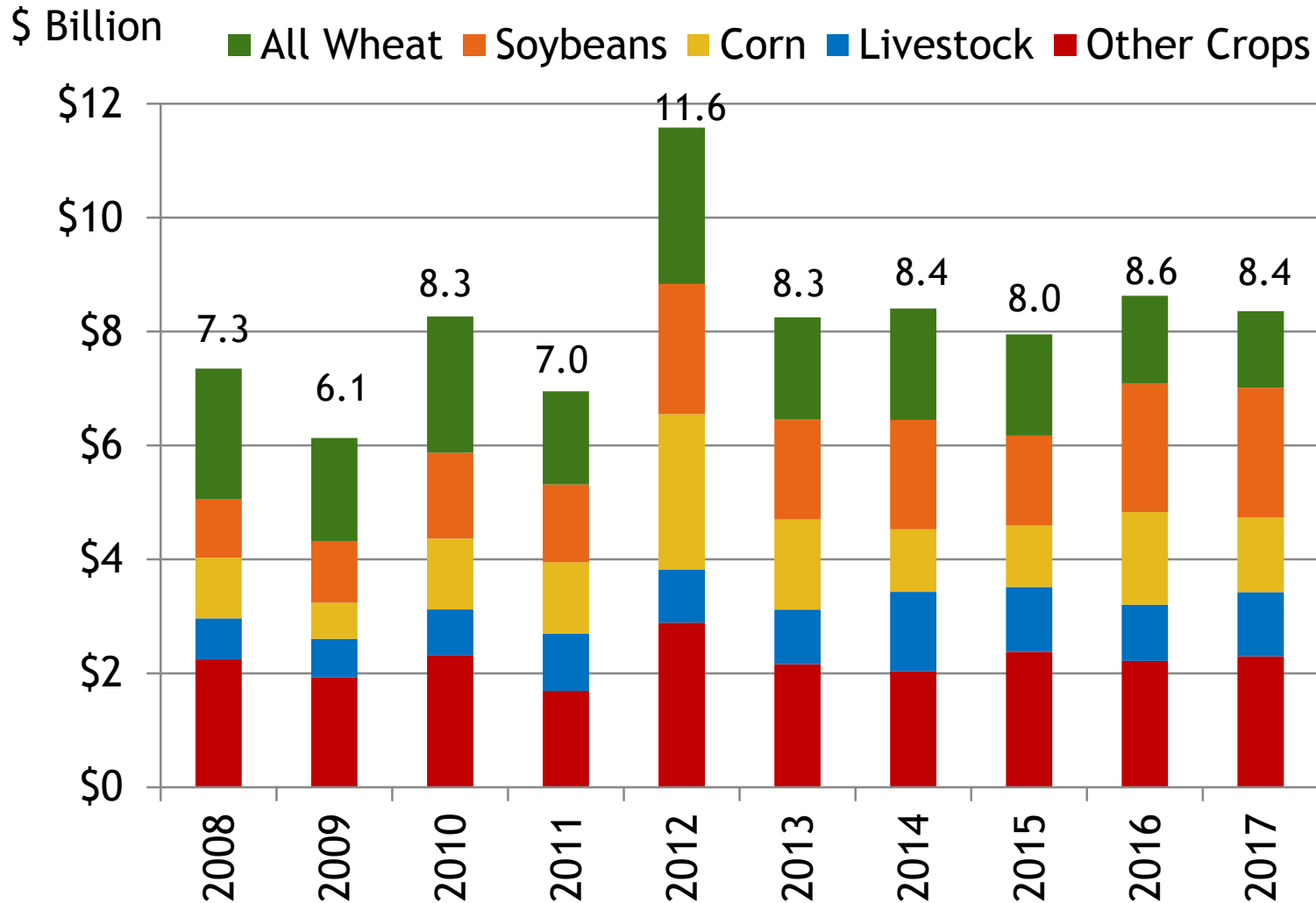


# North Dakota Agriculture

- ▶ Agriculture is largest industry in the state
  - ▶ Value of crop production in recent years has been \$7-10 billion with an economic impact of \$20-30 billion
- ▶ 31,000 farms with an average size of 1,300 acres (500 hectares)
  - ▶ Many are much larger
- ▶ Plentiful on-farm storage
  - ▶ 860 million bushels (23 million tons), enough for 3 years of wheat crops
- ▶ More than 300 country elevators with storage of 322 million bushels (8.8 million tons)
  - ▶ Shuttle facilities becoming more common
- ▶ Most of our crops are exported out of state
  - ▶ Major destinations for HRS are Minneapolis, PNW, Duluth, Midland/Gulf
  - ▶ Major destinations for durum are Minneapolis, Duluth, Midland/Gulf

# North Dakota Ag Enterprise Values

(No Crop Insurance/Gov't Payments Included)



# North Dakota Ag Enterprise Values

(No Gov't Payments Included)

