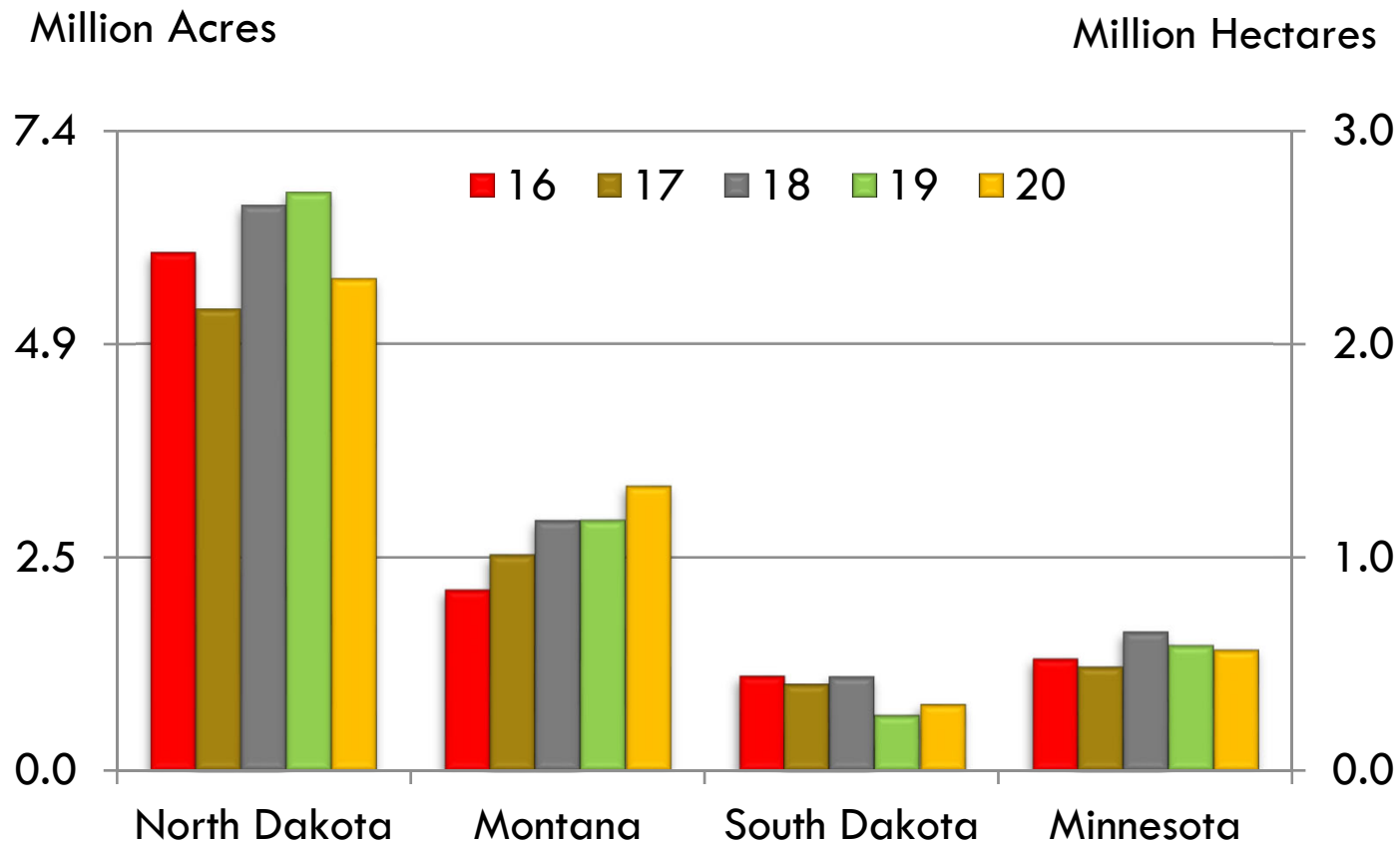


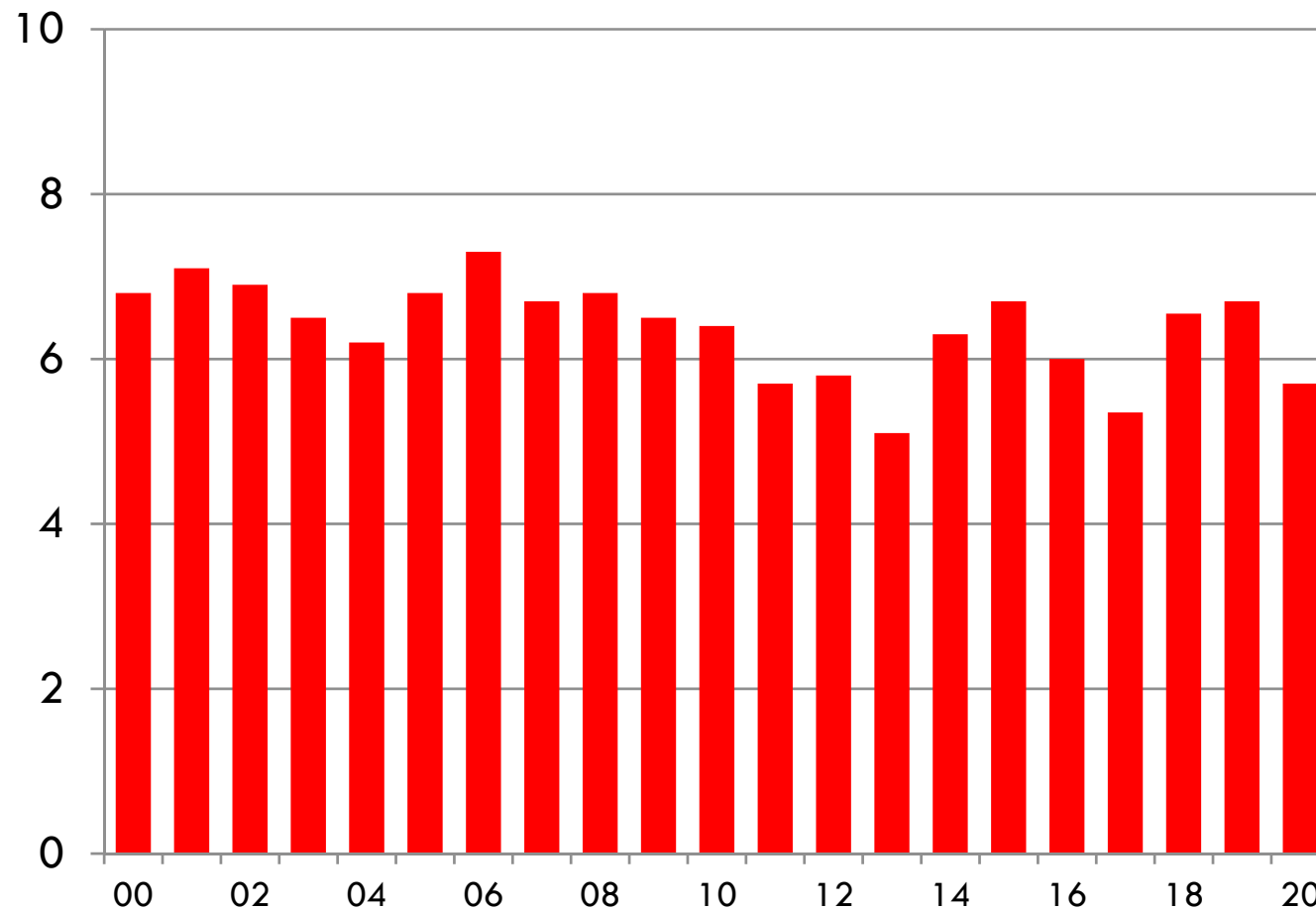
U.S. SPRING WHEAT PLANTINGS BY STATE



Source: USDA Small Grains Summary



NORTH DAKOTA PLANTINGS OF HARD RED SPRING WHEAT (Million Acres)

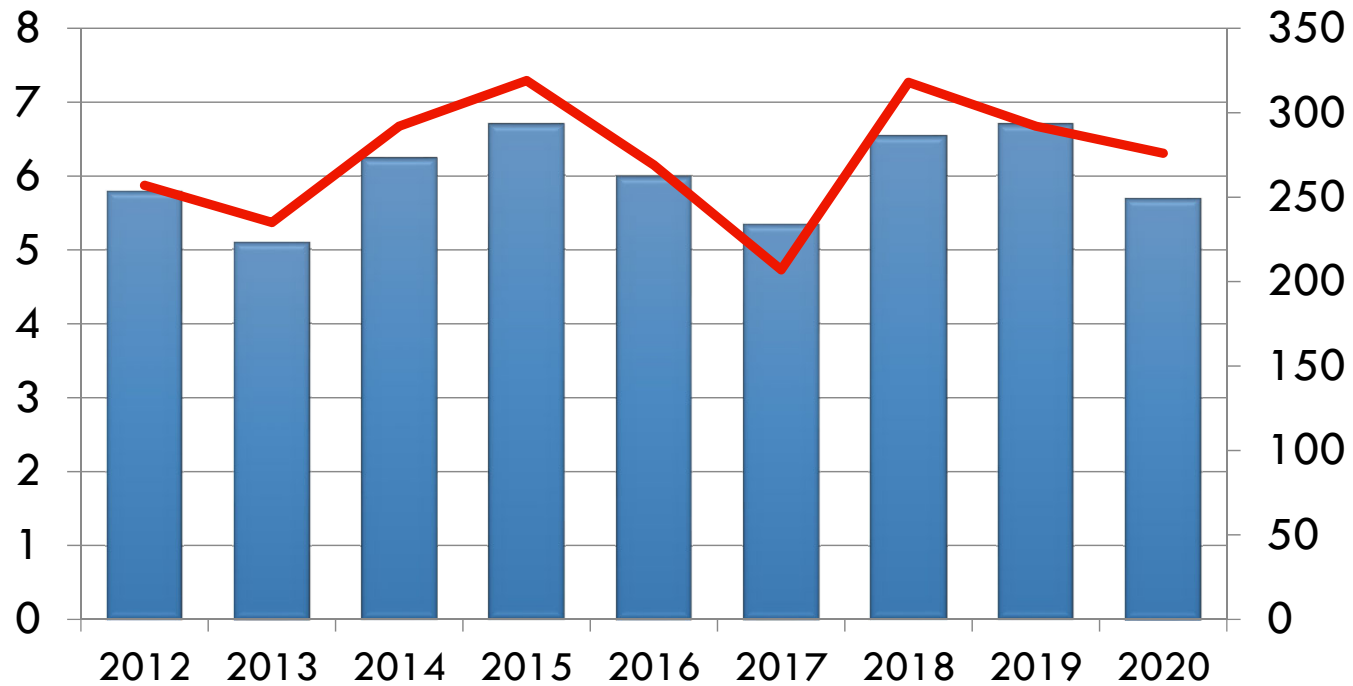


ND HRS Plantings & Production



Million Acres

Million Bushels



Source: USDA Small Grains Summary

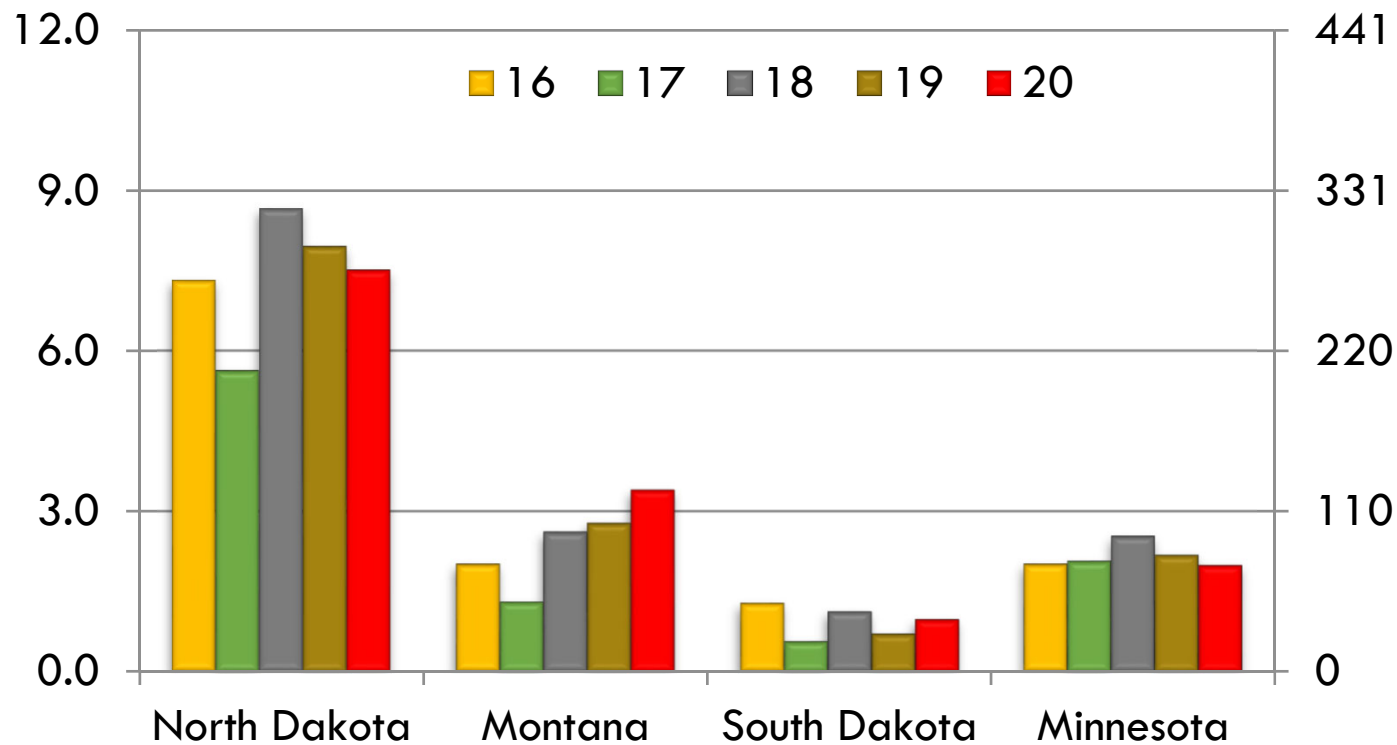


U.S. SPRING WHEAT PRODUCTION BY STATE



Million Tons

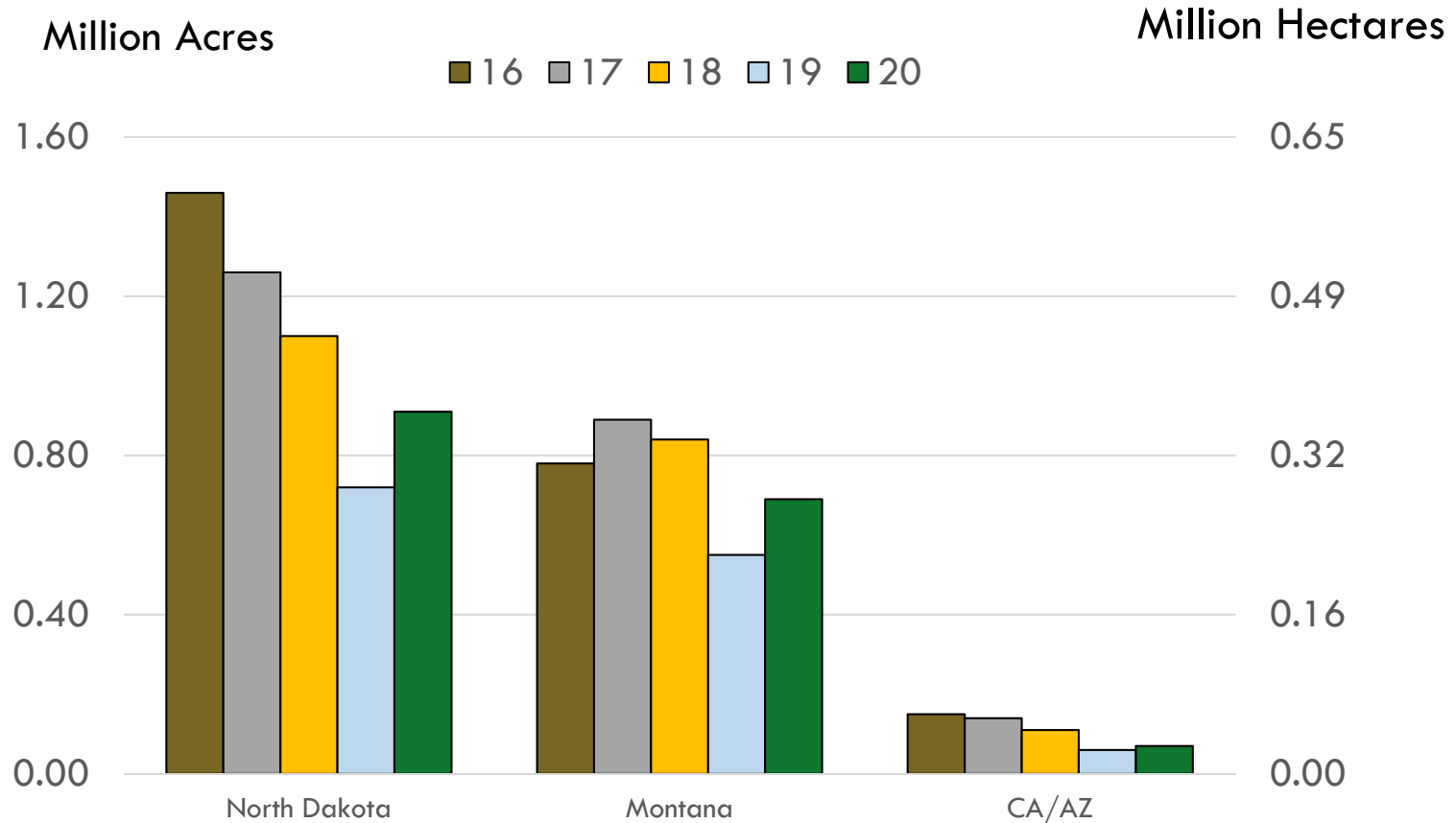
Million Bushels



Source: USDA Small Grains Summary



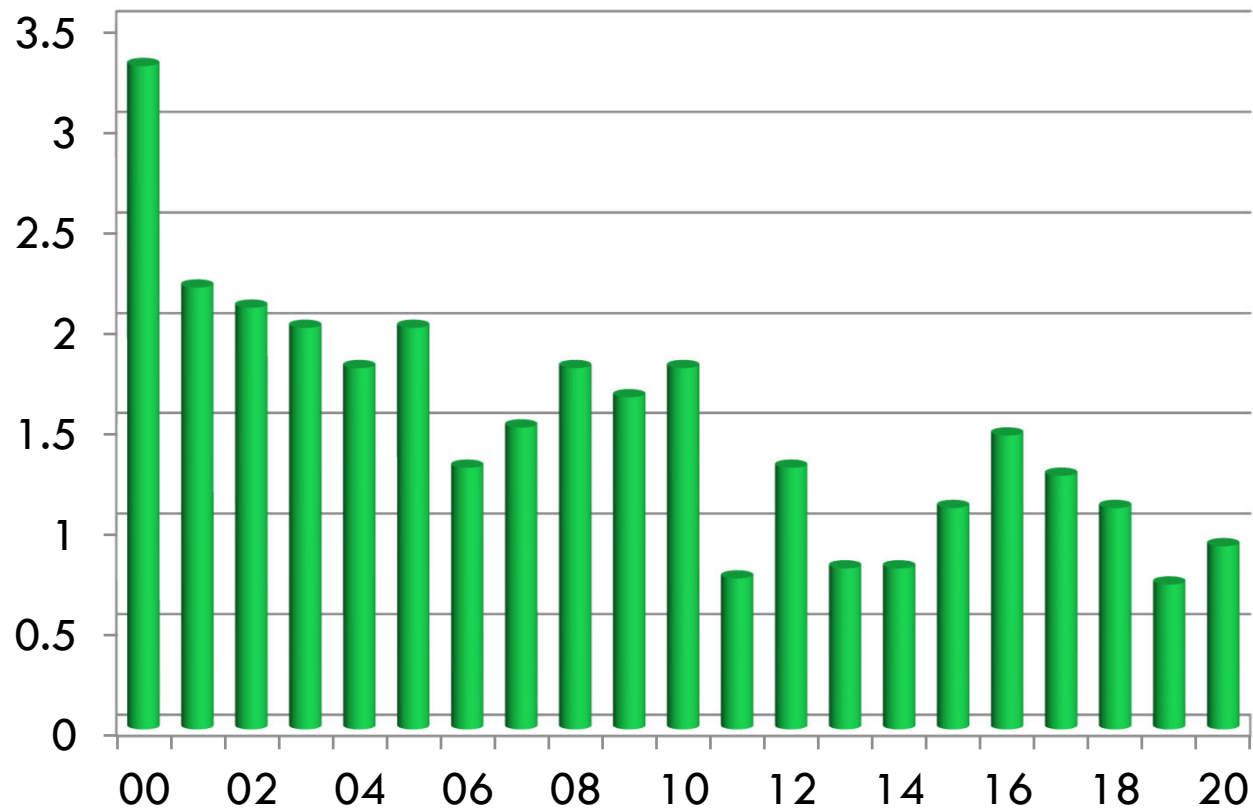
U.S. DURUM WHEAT PLANTINGS BY STATE



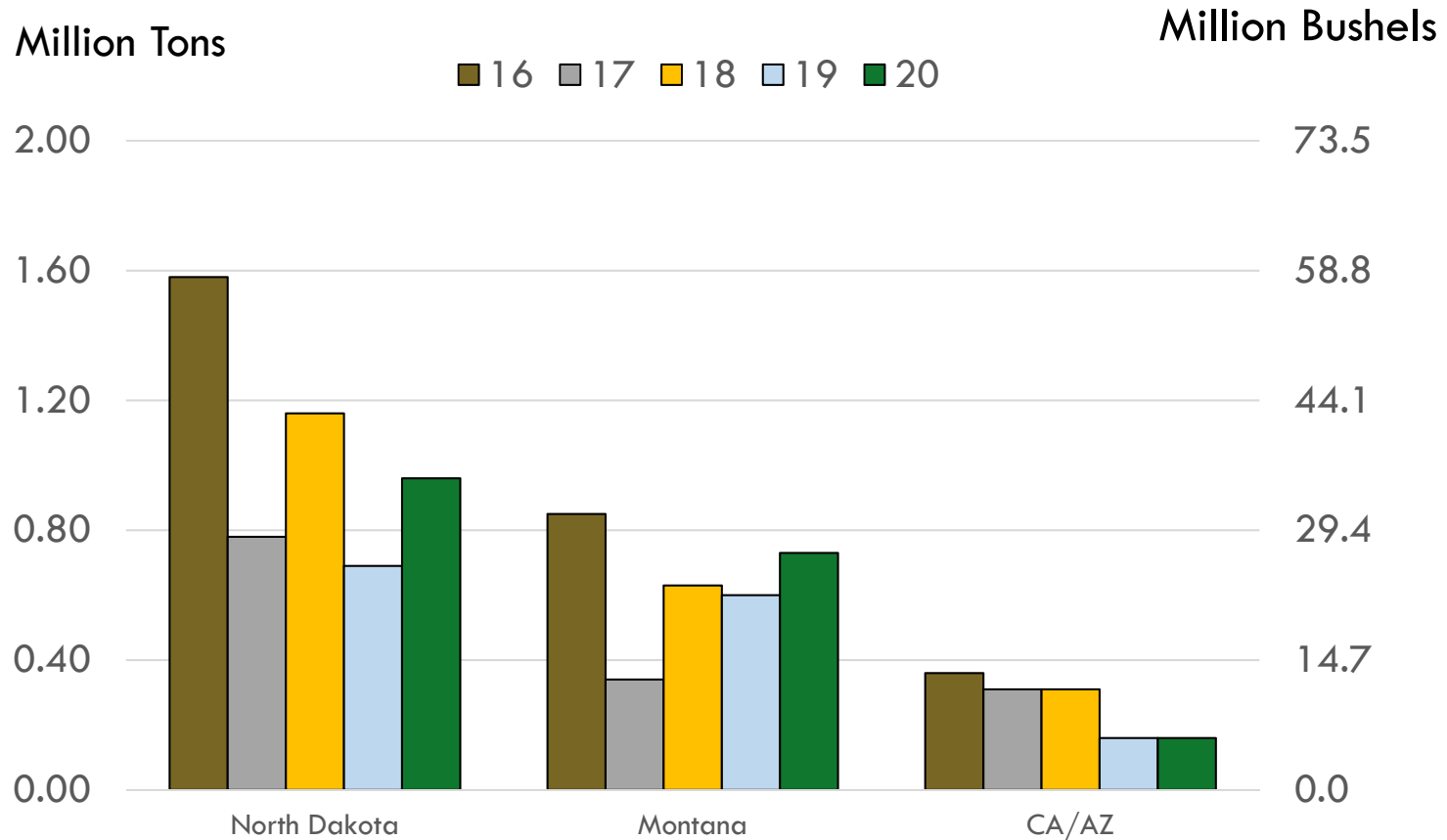
Source: USDA Small Grains Summary



NORTH DAKOTA PLANTINGS OF DURUM WHEAT (Million Acres)



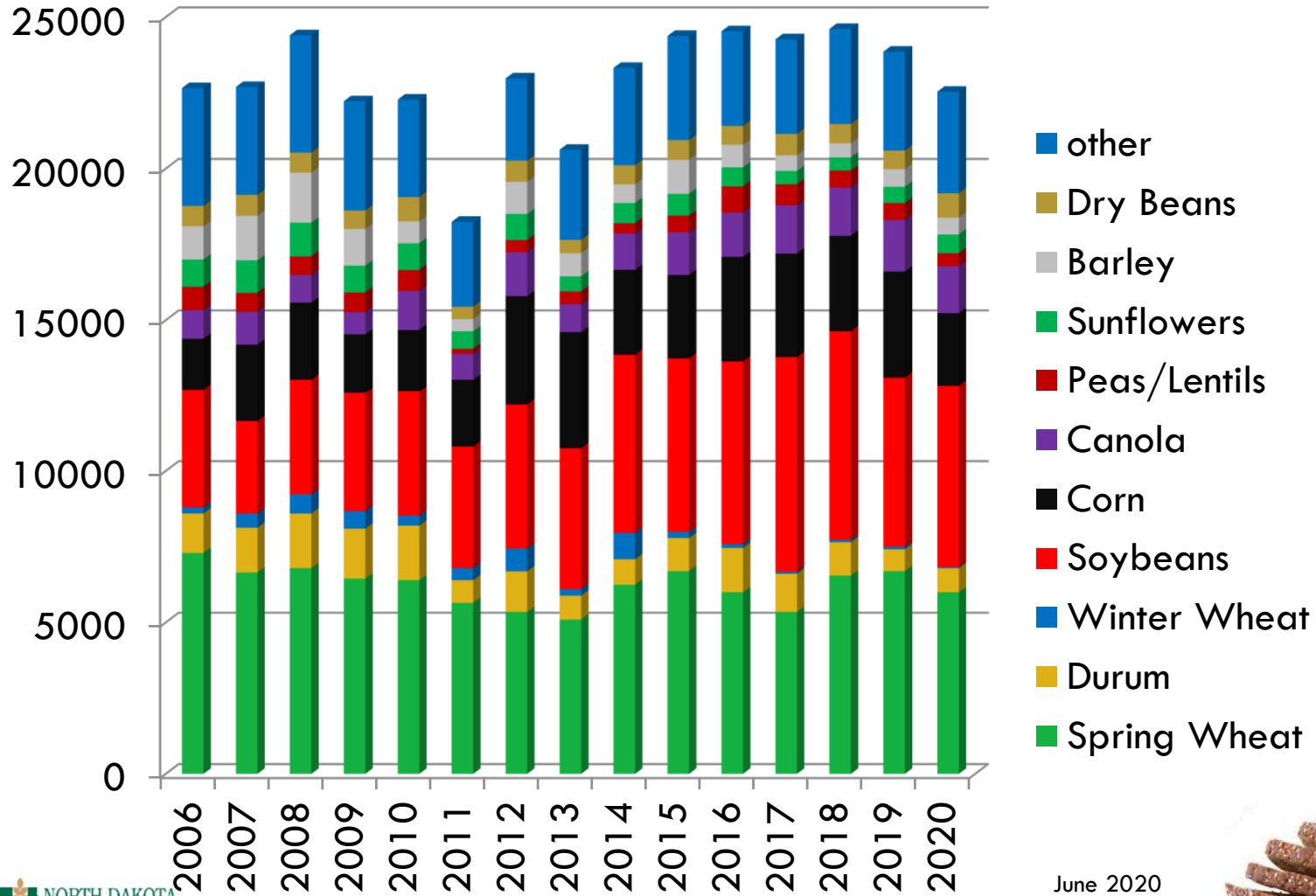
U.S. DURUM WHEAT PRODUCTION BY STATE



Source: USDA Small Grains Summary



North Dakota Planted Area (Thousand Acres)



North Dakota



- Population of 740,000
- 90% of land is in crop production or ranch land
- Major industries are agriculture, oil and gas exploration, energy and manufacturing



North Dakota Agriculture

- North Dakota has diverse crop production
- Top producer of many crops
- Over 20 crops in production
 - Most producers grow 3-10 crops
- Wheat is one of the largest crops in the state, accounting for one-fourth of crop acreage and one-third of total farm revenue
- Other major crops are soybeans, corn, barley, canola, sunflower, sugar beets, dry peas, dry beans, flaxseed



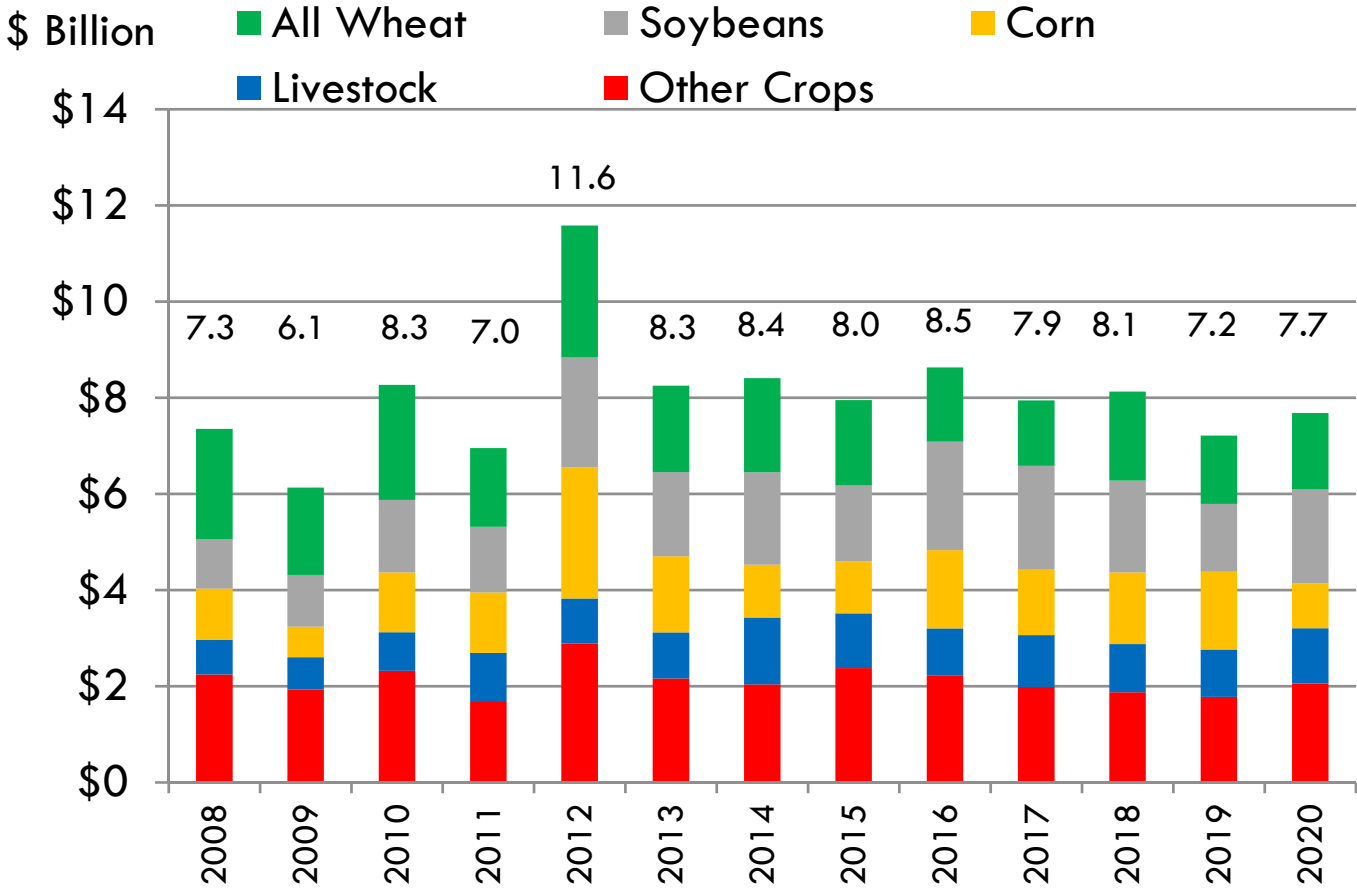
North Dakota Agriculture



- Agriculture is largest industry in the state
 - Value of crop production in recent years has been \$7-10 billion with an economic impact of \$20-30 billion
- 31,000 farms with an average size of 1,300 acres (500 hectares)
 - Many are much larger
- Plentiful on-farm storage
 - 860 million bushels (23 million tons), enough for 3 years of wheat crops
- More than 300 country elevators with storage of 322 million bushels (8.8 million tons)
 - Shuttle facilities becoming more common
- Most of our crops are exported out of state
 - Major destinations for HRS are Minneapolis, PNW, Duluth, Midland/Gulf
 - Major destinations for durum are Minneapolis, Duluth, Midland/Gulf



North Dakota Ag Enterprise Values



*2020 data is preliminary

Source: NASS
Nov 2020



North Dakota Ag Enterprise Values plus Crop Insurance/Govt Payments

