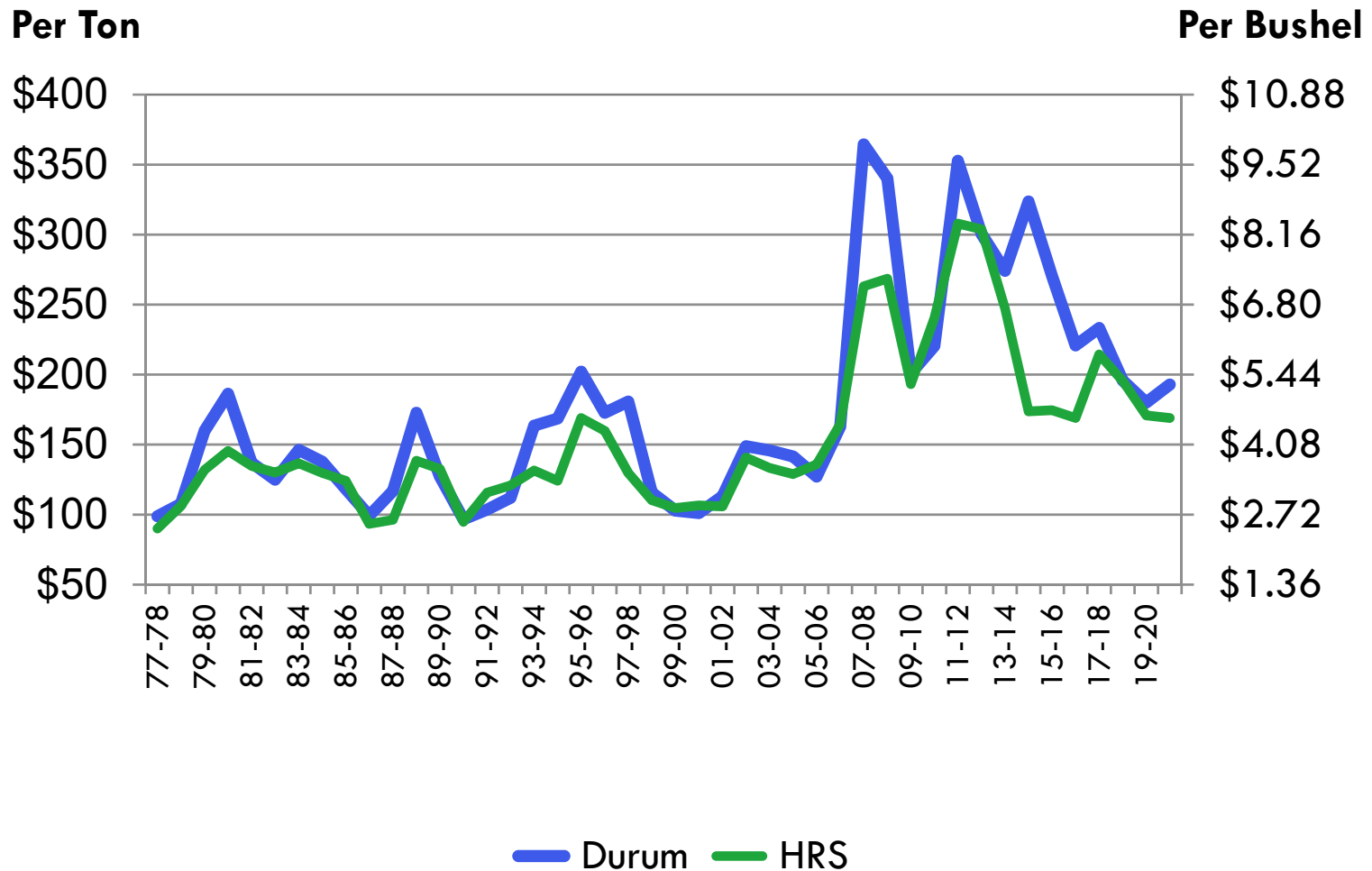


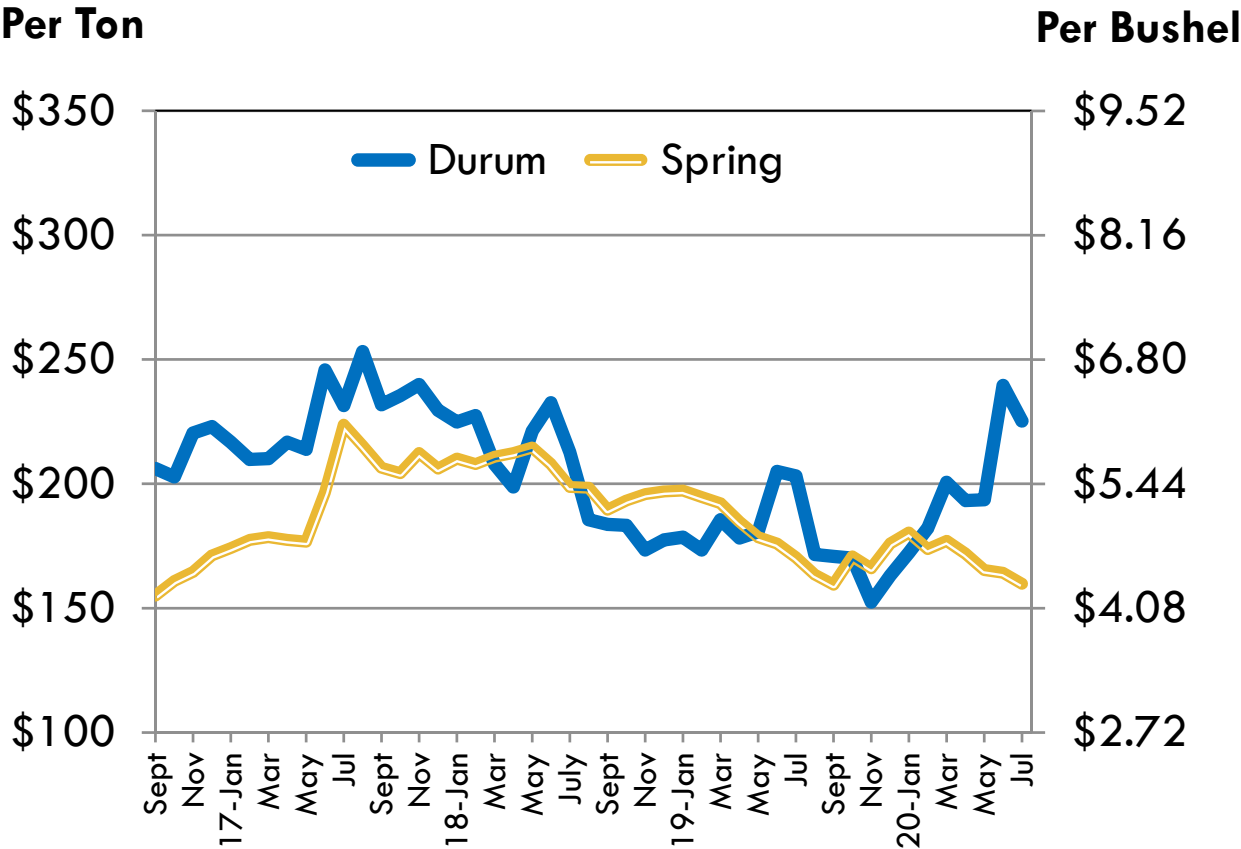
U.S. AVERAGE FARM PRICES (Long Term)



Source: USDA, Annual Price Summary

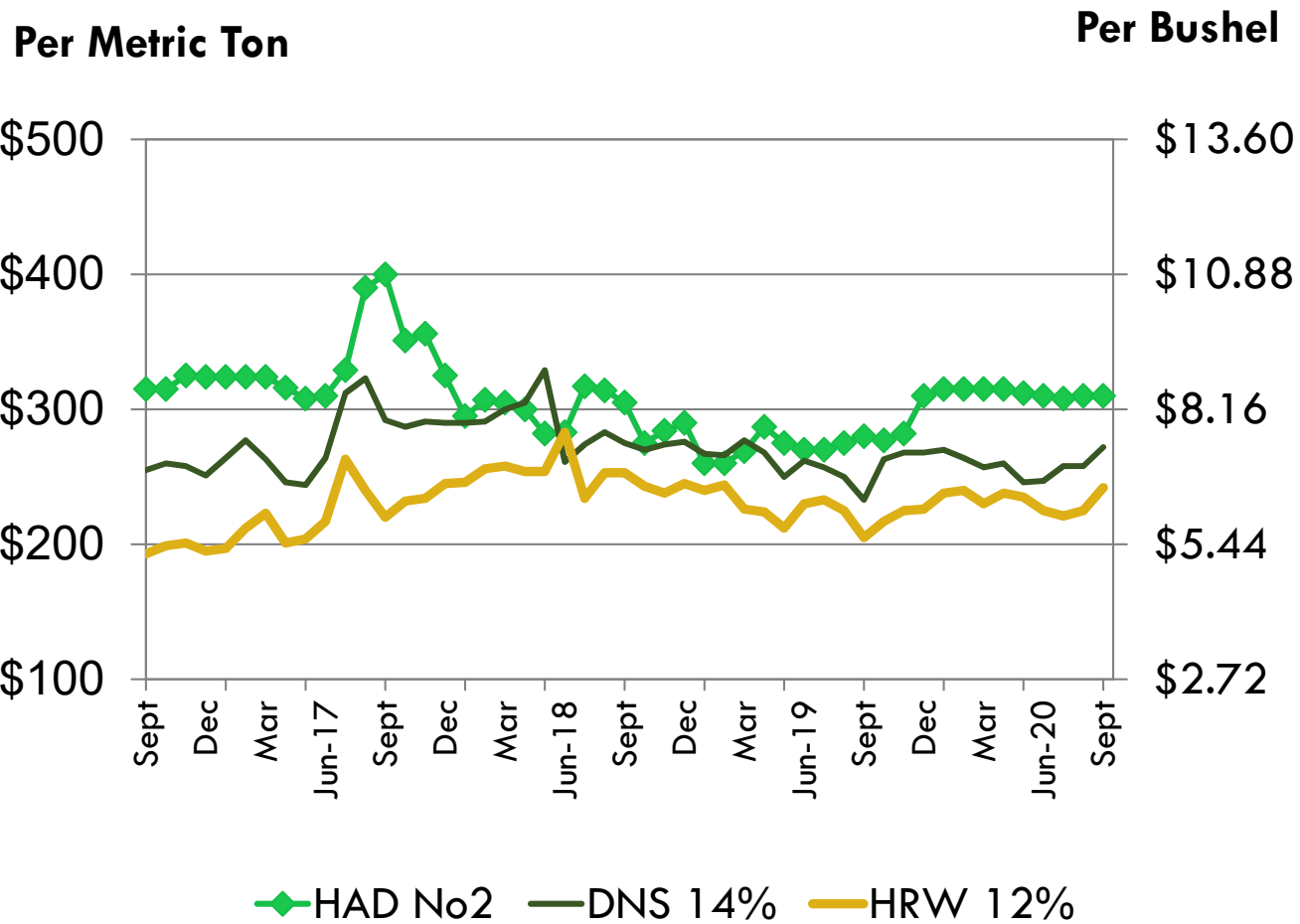
9/11/20

U.S. AVERAGE FARM PRICES



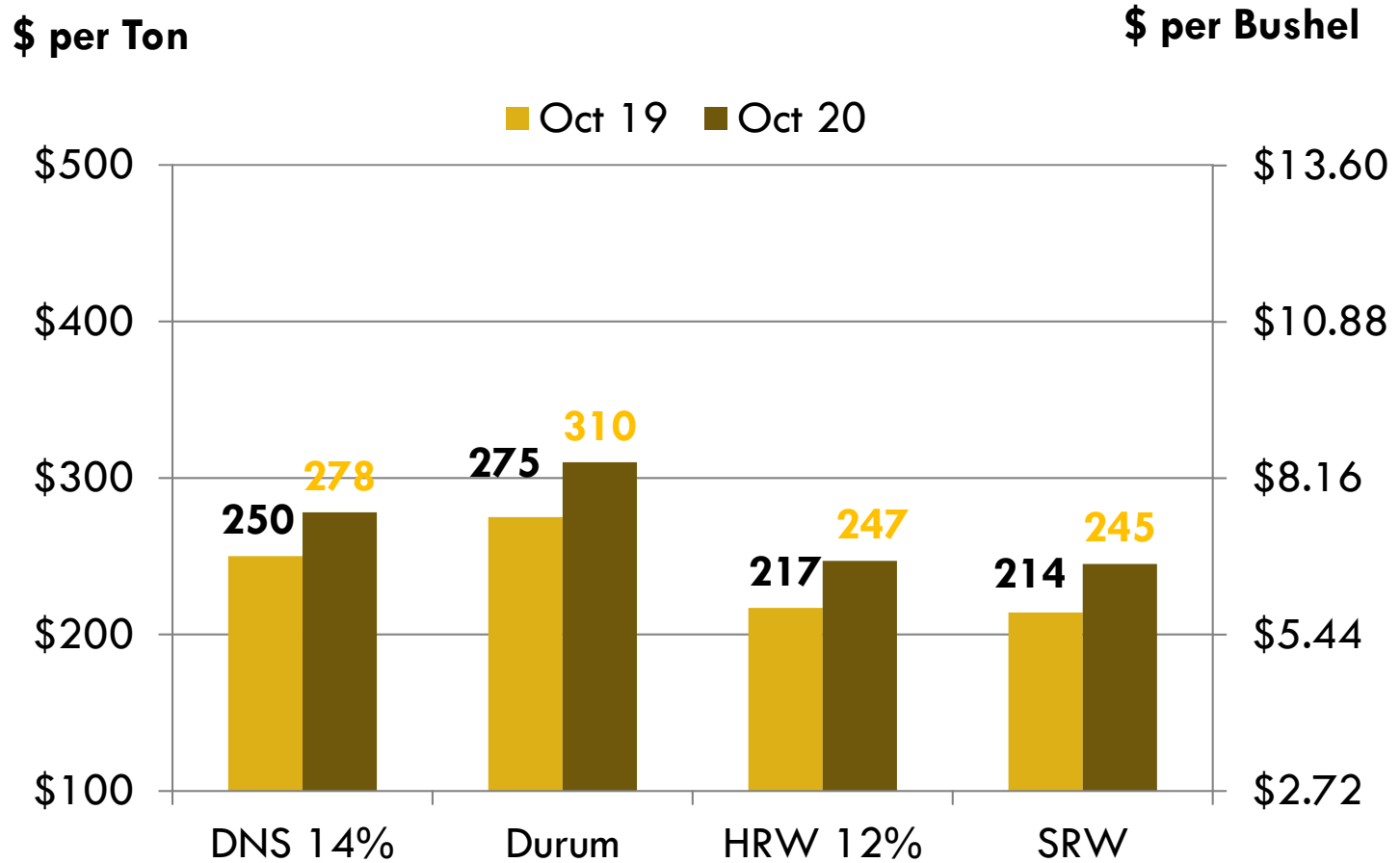
Source: USDA, Annual Price Summary
8/31/2020

PRICE TRENDS AT GULF



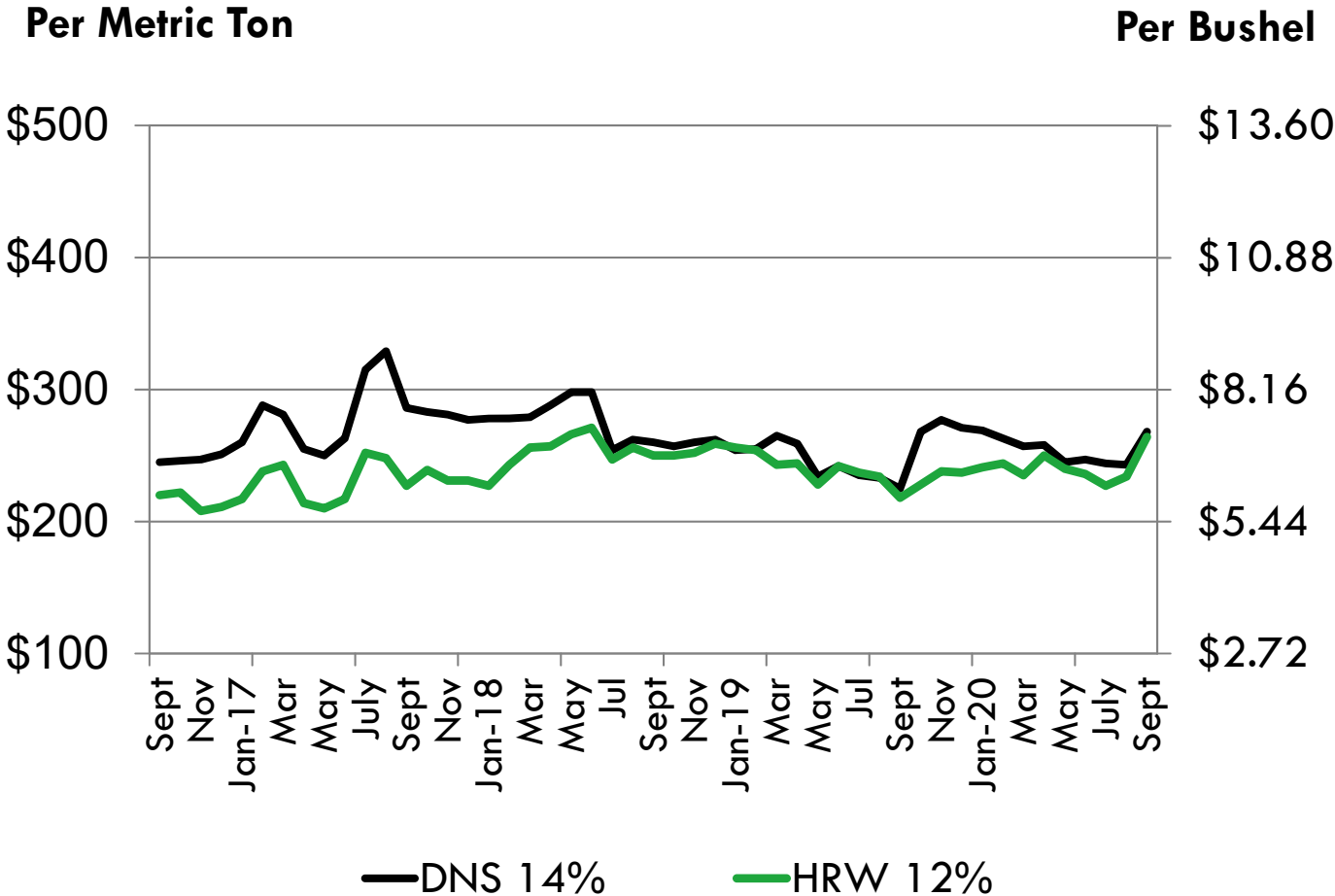
Source: USDA, Annual Price Summary
9/11/20

U.S. WHEAT PRICE CHANGE AT THE GULF



9/11/20

PRICE TRENDS AT THE PNW

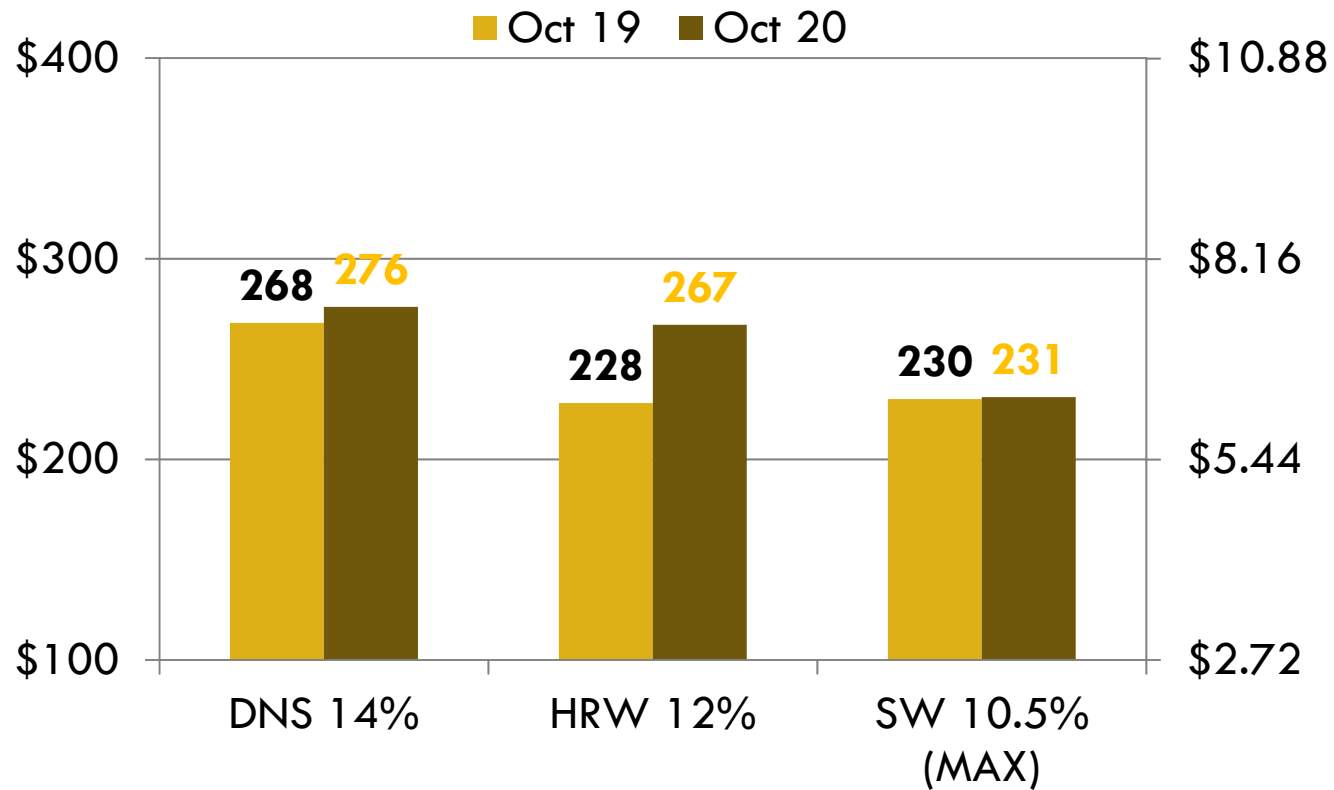


Source: USDA, Annual Price Summary
9/11/20

U.S. WHEAT PRICE CHANGE AT THE PNW

\$ per Ton

\$ per Bushel

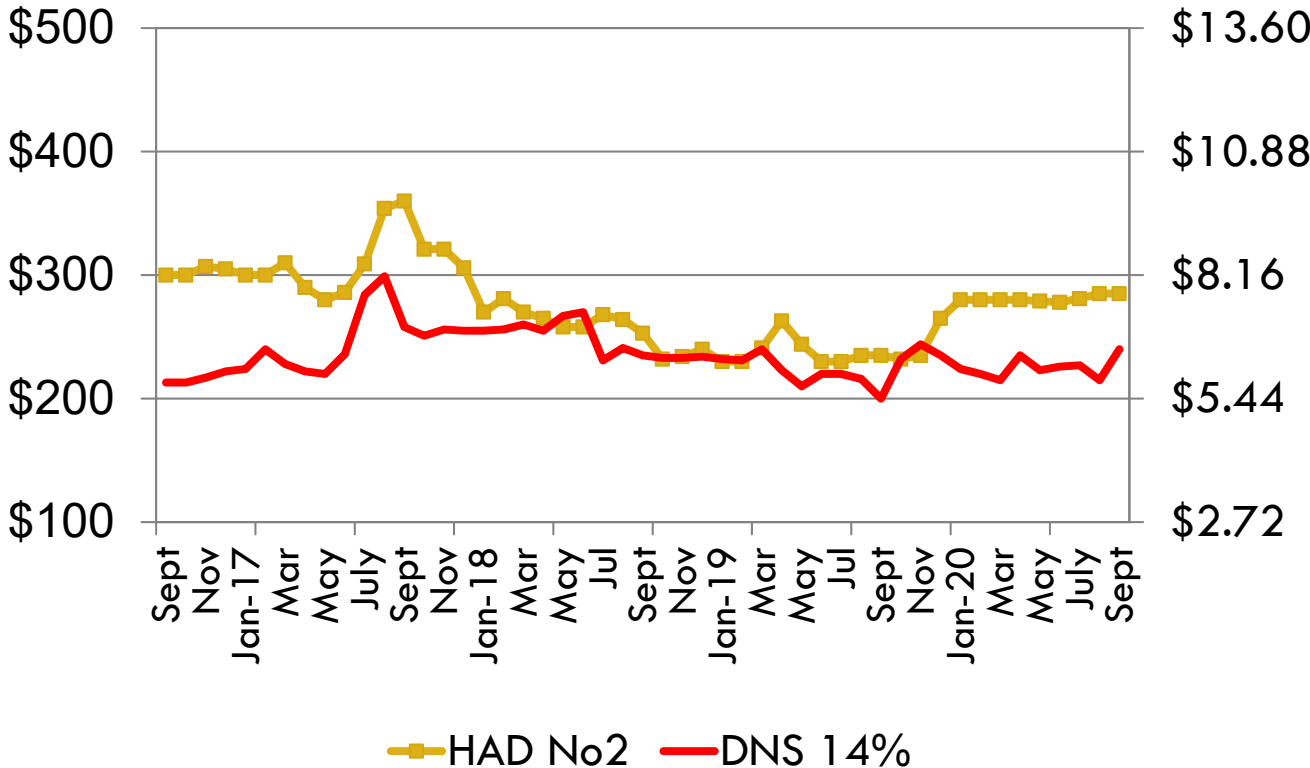


9/11/20

PRICE TRENDS AT THE LAKES

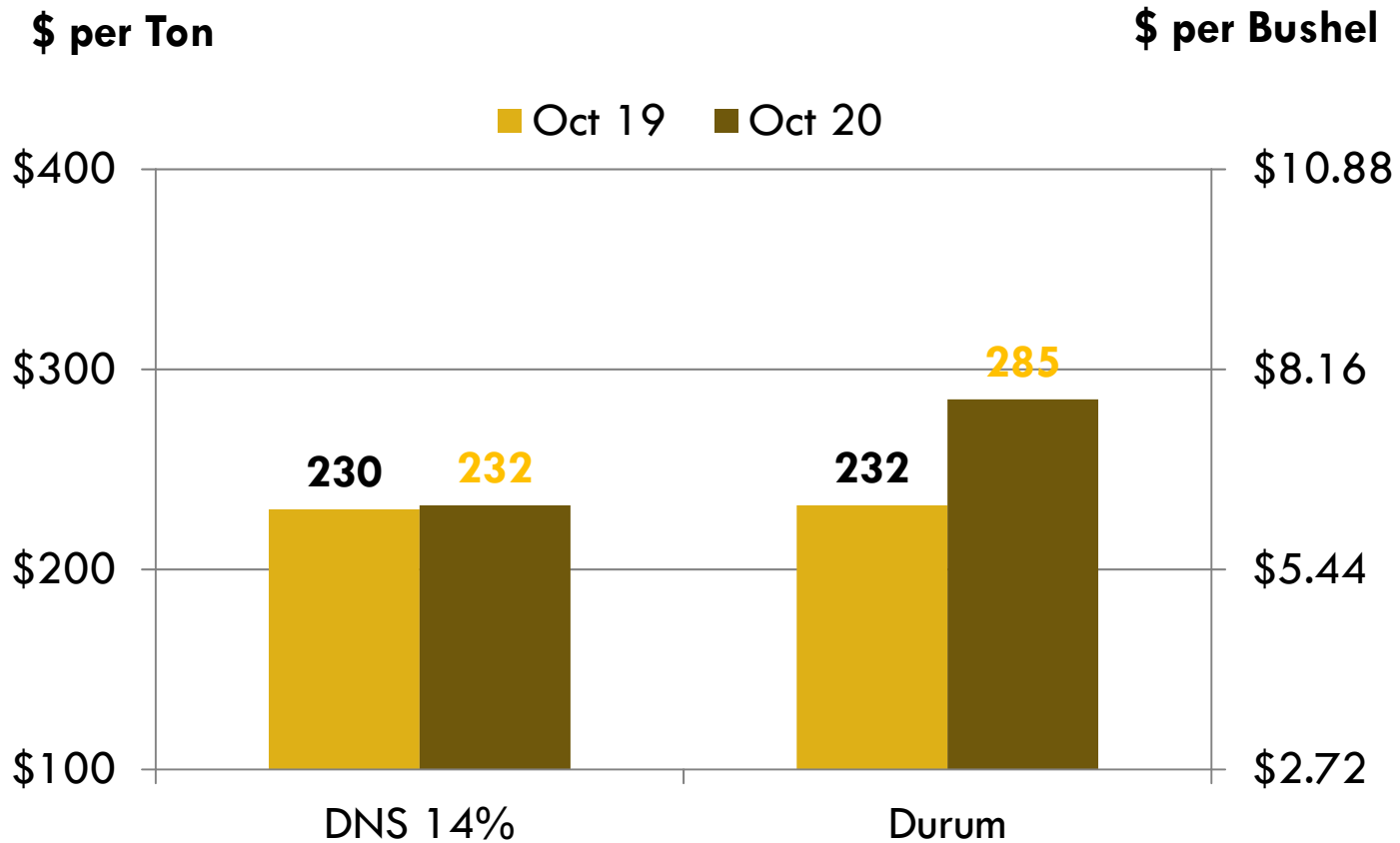
Per Metric Ton

Per Bushel



Source: USDA, Annual Price Summary
9/11/20

U.S. WHEAT PRICE CHANGE AT THE LAKES



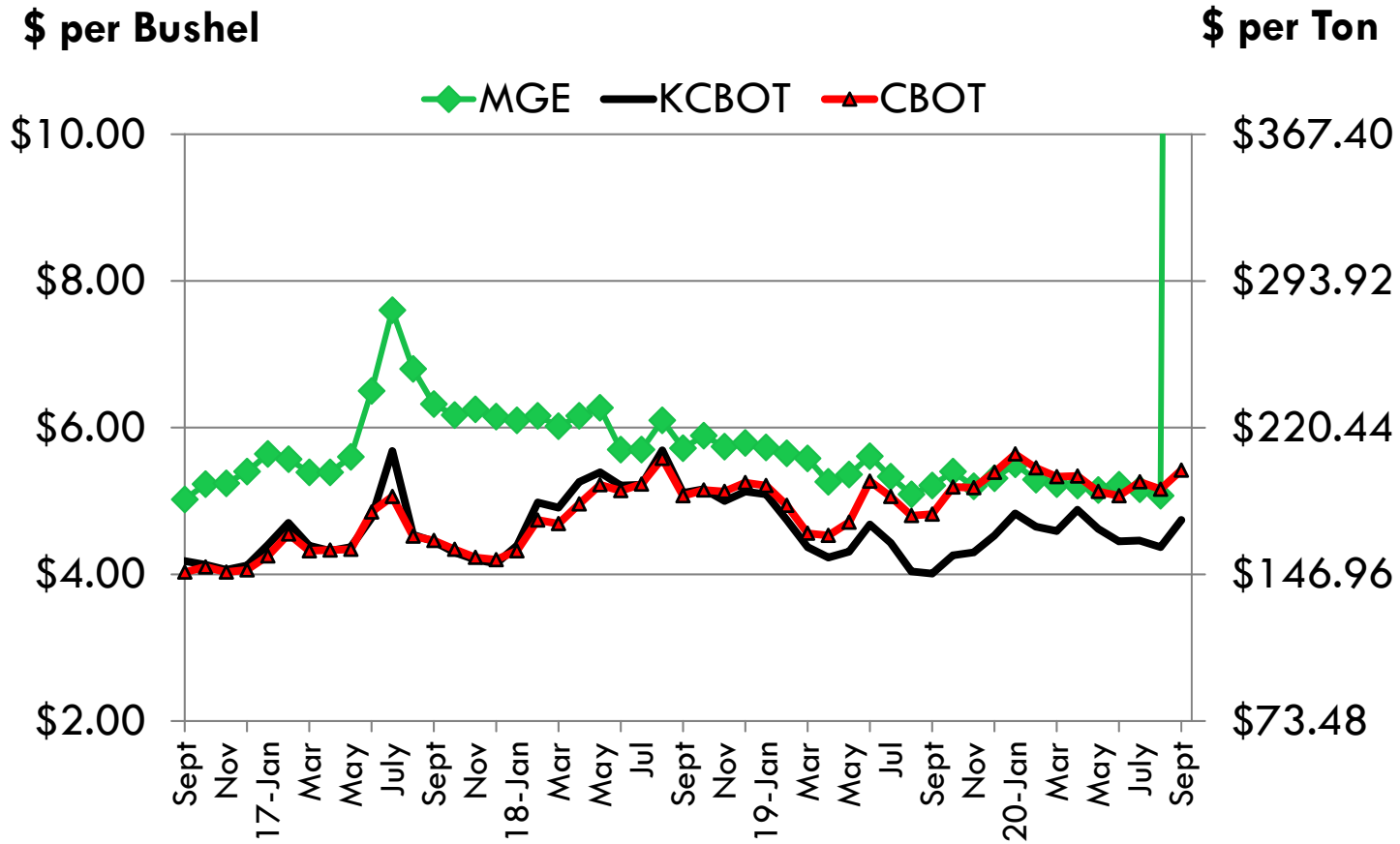
9/11/20

U. S. FUTURES TRENDS

Minneapolis – Hard Red Spring

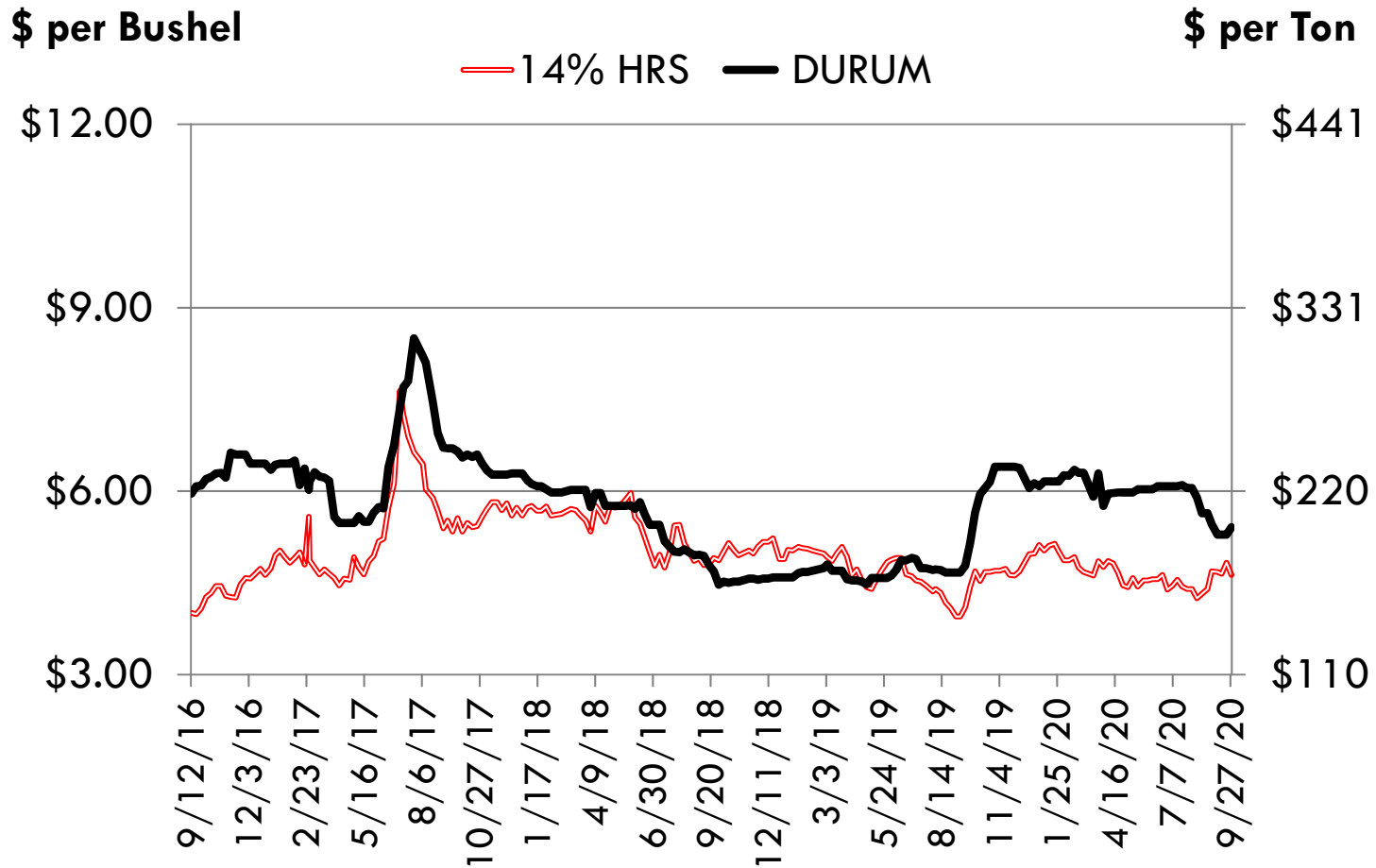
Kansas City – Hard Red Winter

Chicago – Soft Red Winter – World prices



9/11/20

Average N.D. Hard Red Spring and Durum Wheat Producer Bids



Source: AgWeek weekly prices 9/28/20