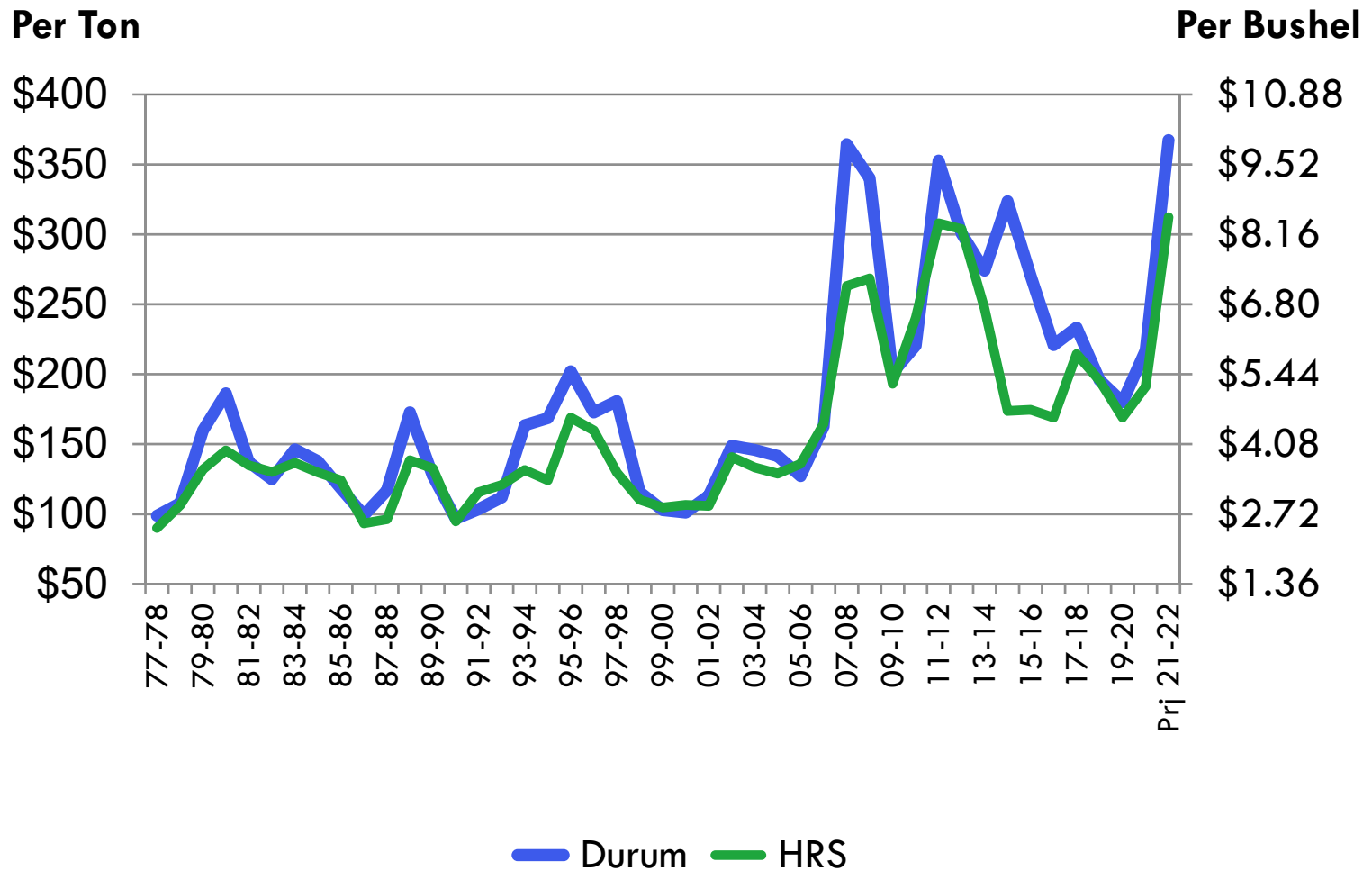


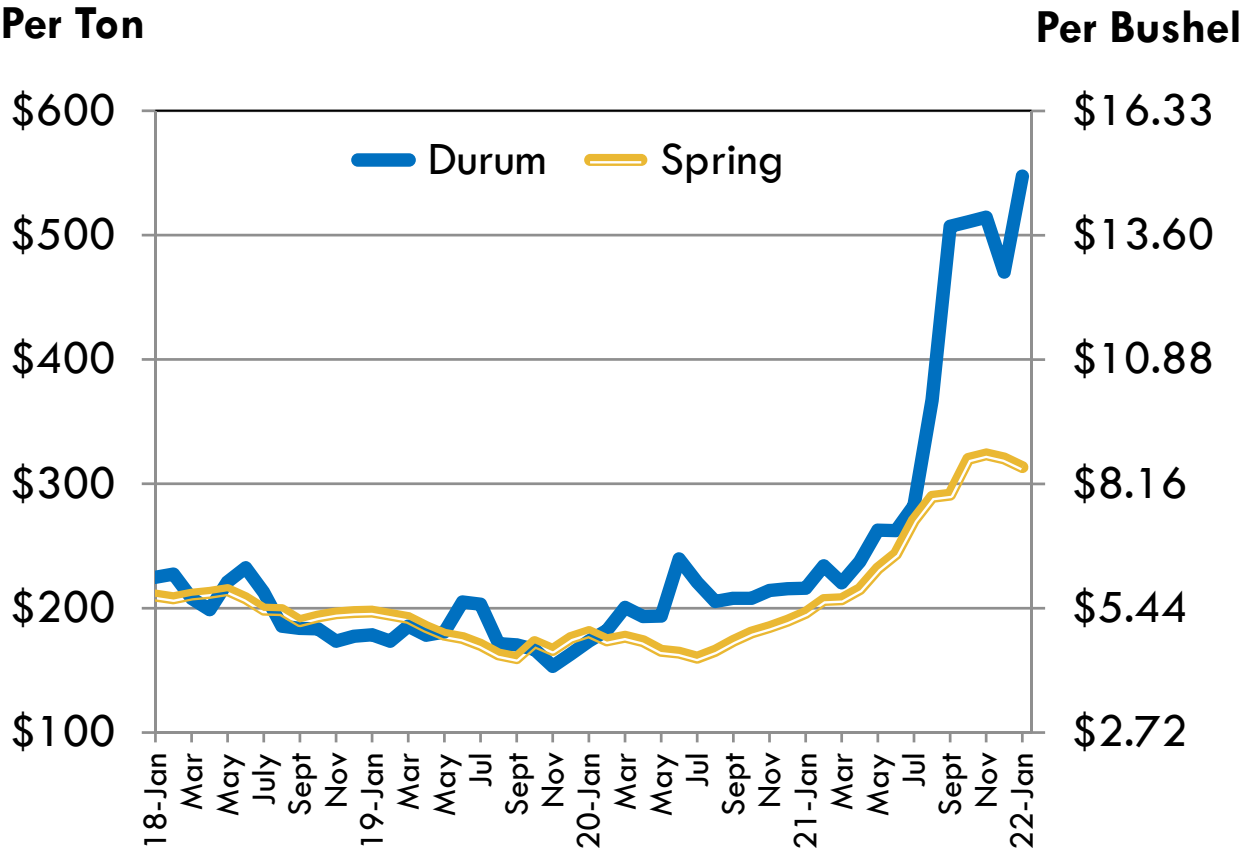
# U.S. AVERAGE FARM PRICES (Long Term)



Source: USDA, Annual Price Summary

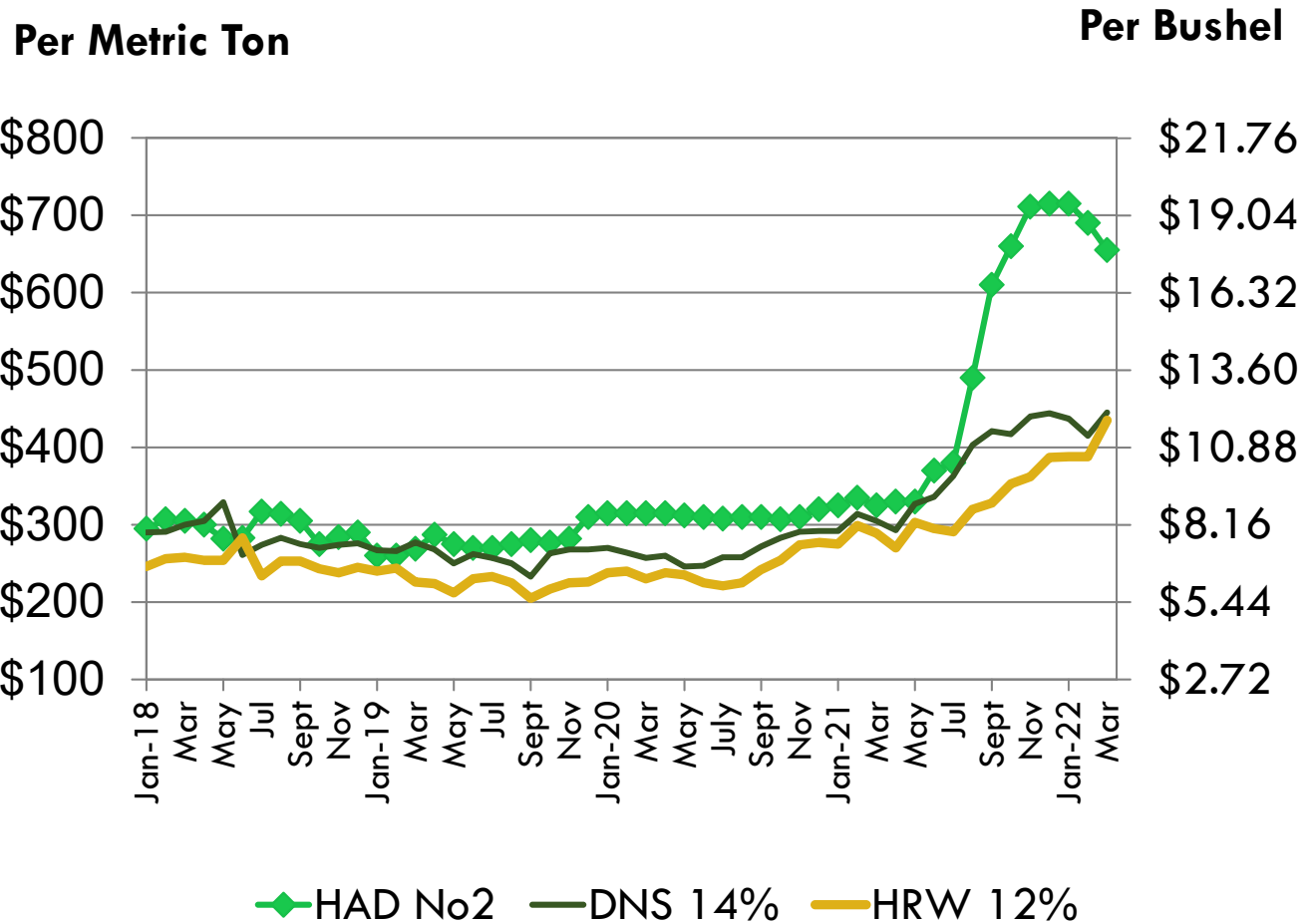
3/9/22

# U.S. AVERAGE FARM PRICES



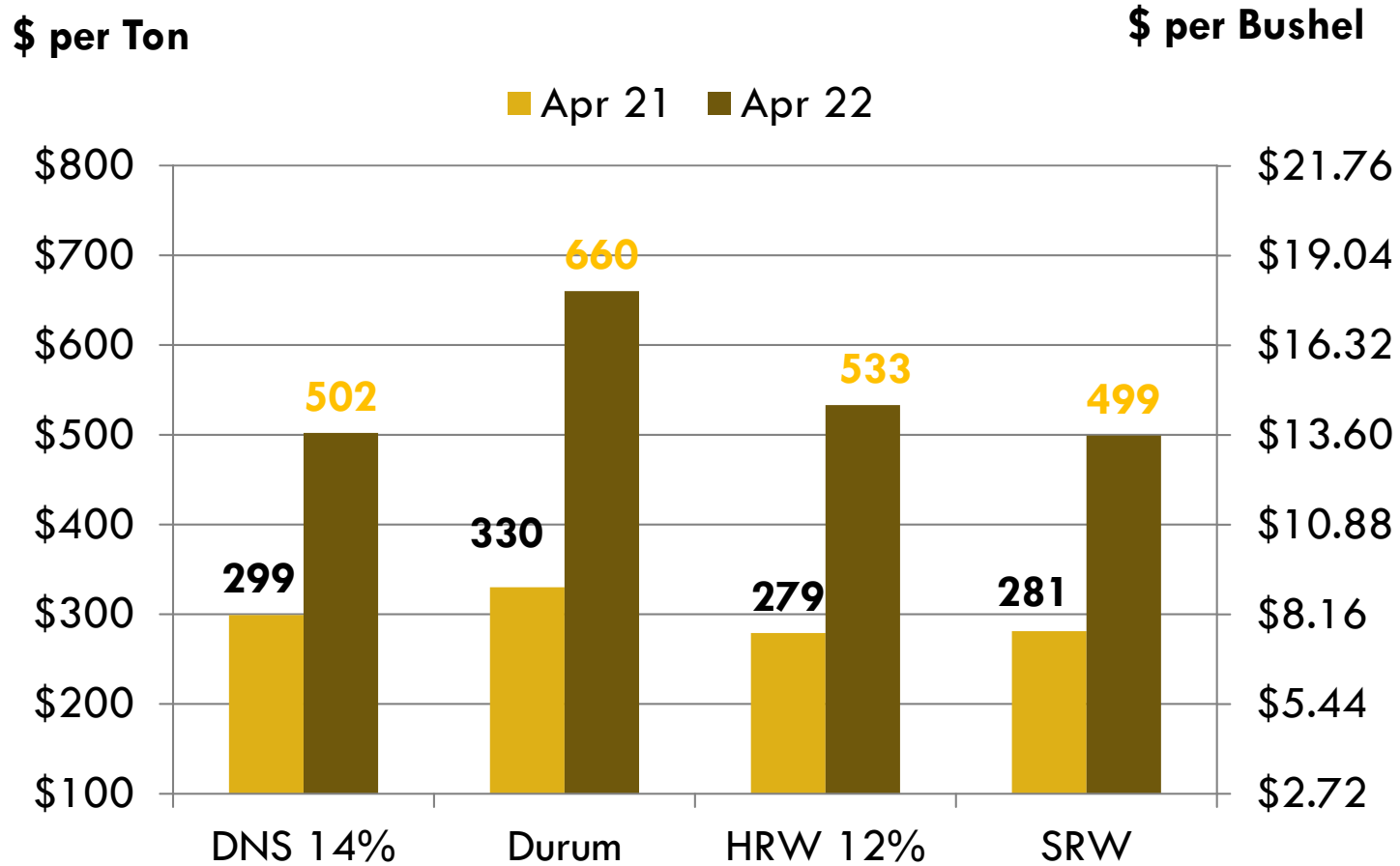
Source: USDA, Annual Price Summary  
2/28/2022

# PRICE TRENDS AT GULF



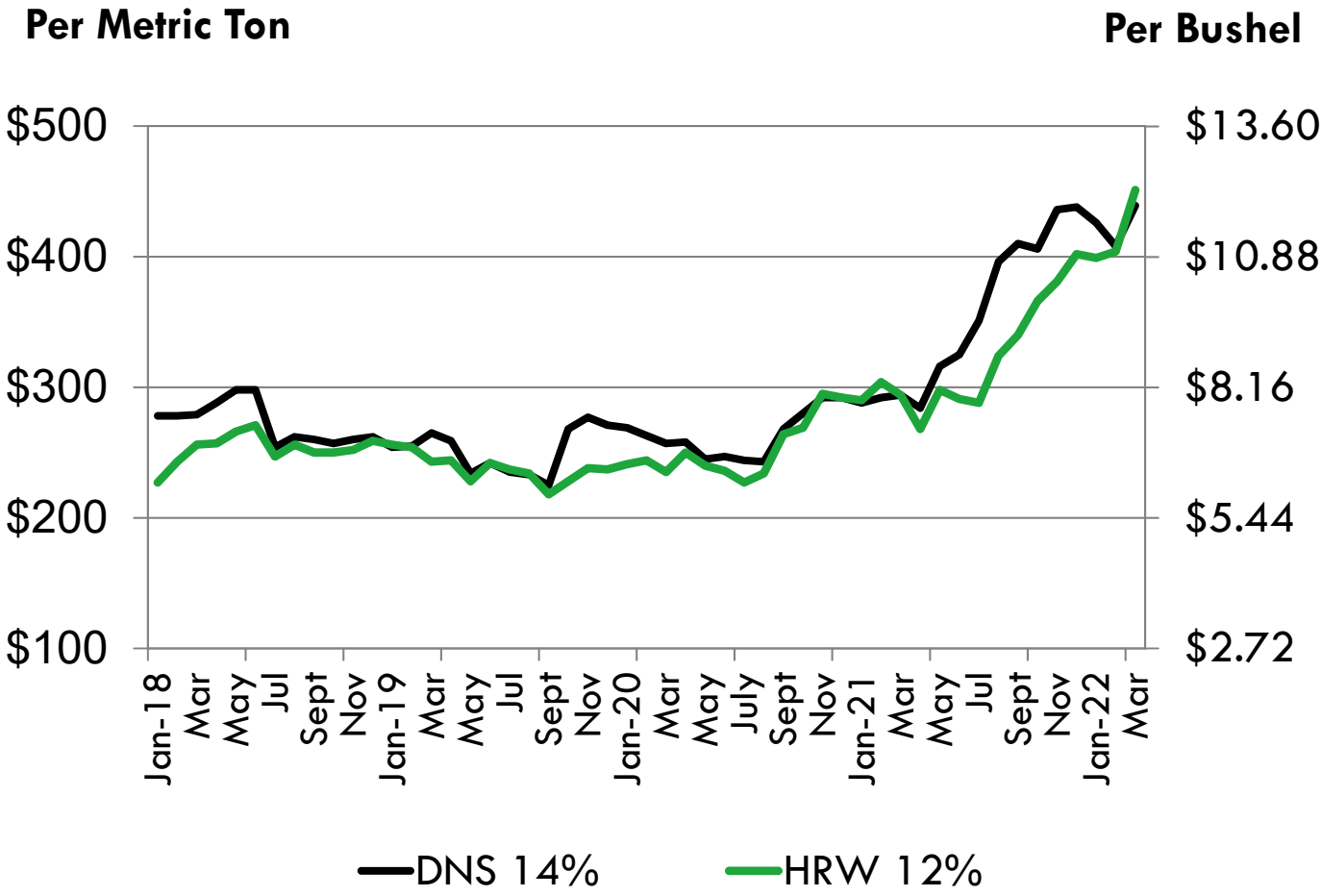
Source: USDA, Annual Price Summary  
3/9/22

# U.S. WHEAT PRICE CHANGE AT THE GULF



3/9/22

# PRICE TRENDS AT THE PNW

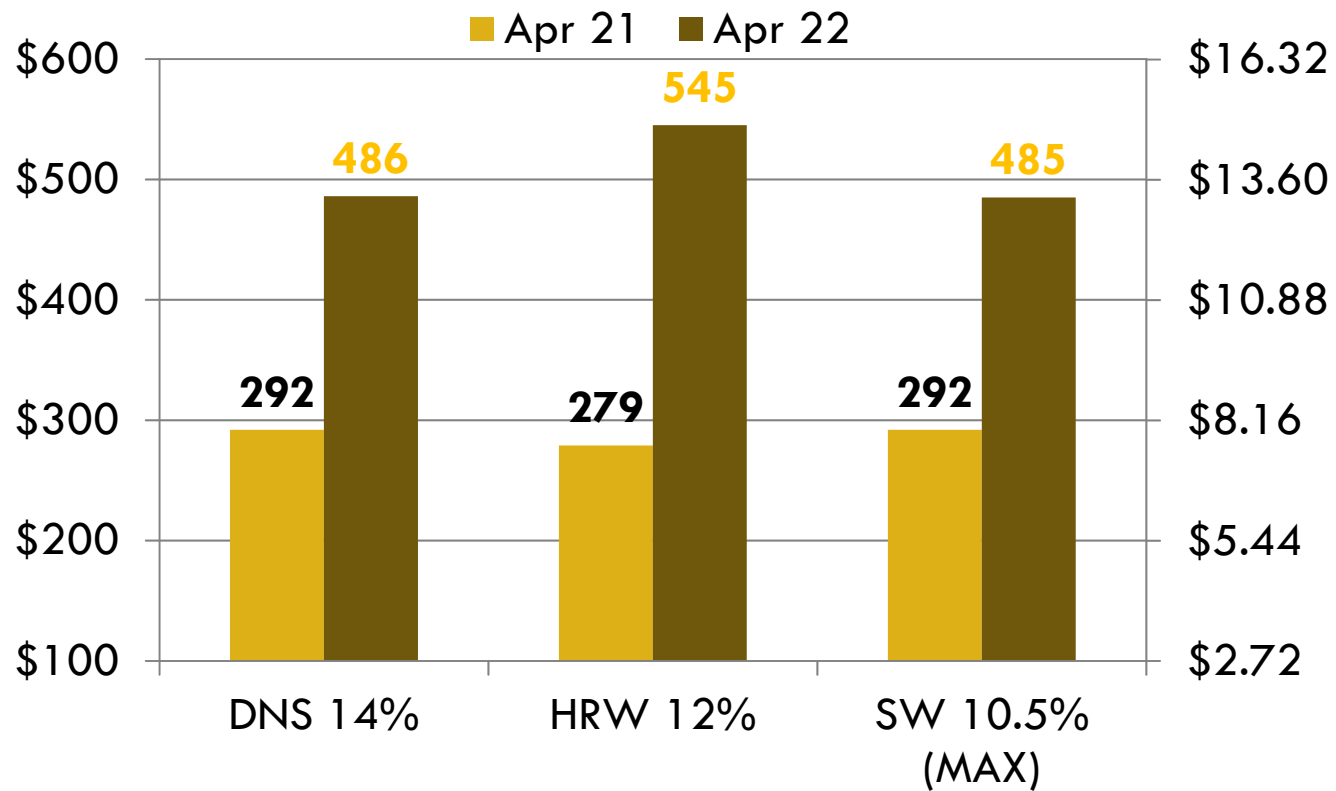


Source: USDA, Annual Price Summary  
3/9/22

# U.S. WHEAT PRICE CHANGE AT THE PNW

\$ per Ton

\$ per Bushel

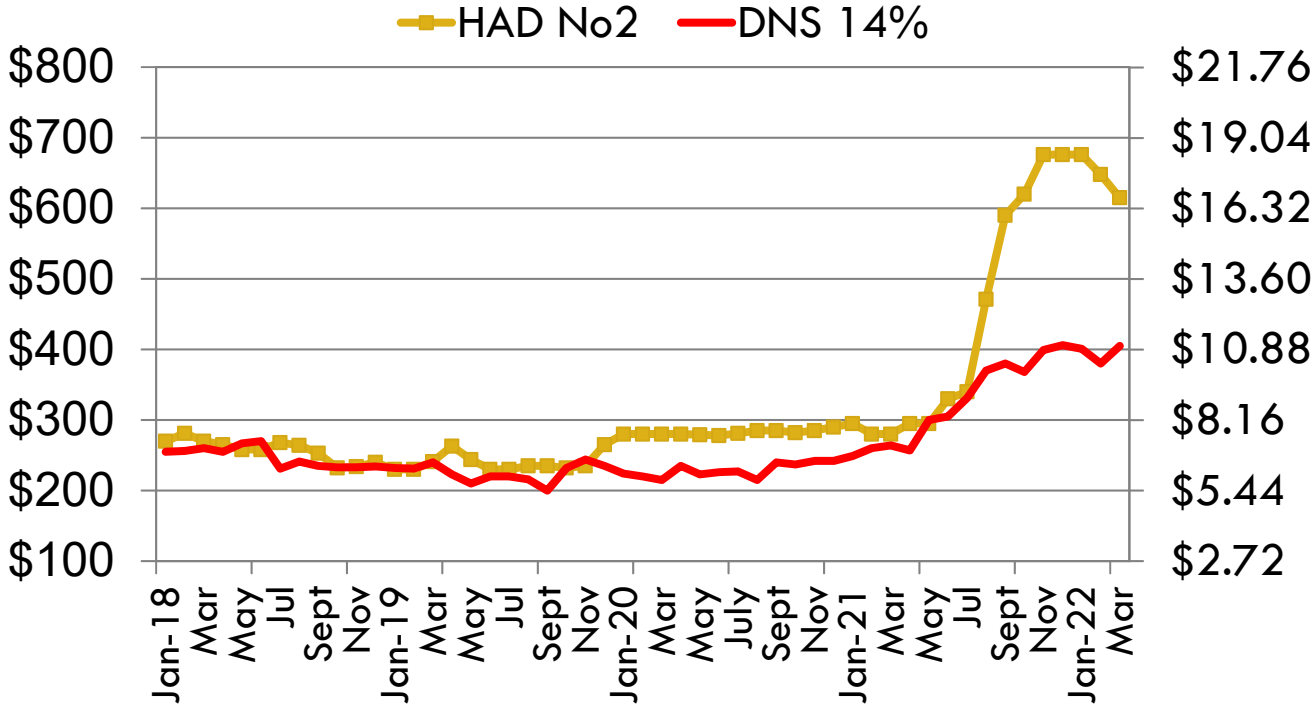


3/9/22

# PRICE TRENDS AT THE LAKES

Per Metric Ton

Per Bushel



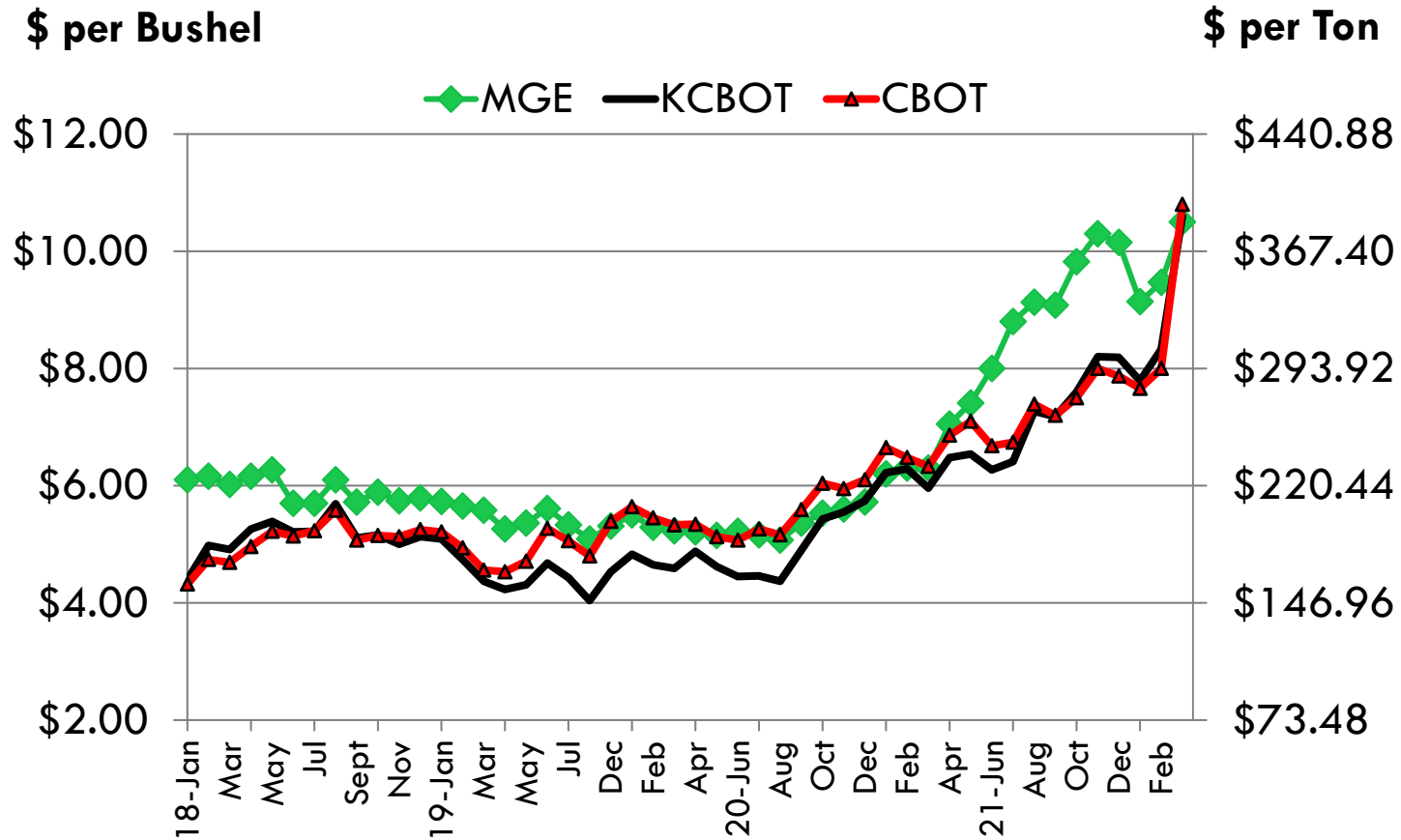
Source: USDA, Annual Price Summary  
3/9/22

# U. S. FUTURES TRENDS

Minneapolis – Hard Red Spring

Kansas City – Hard Red Winter

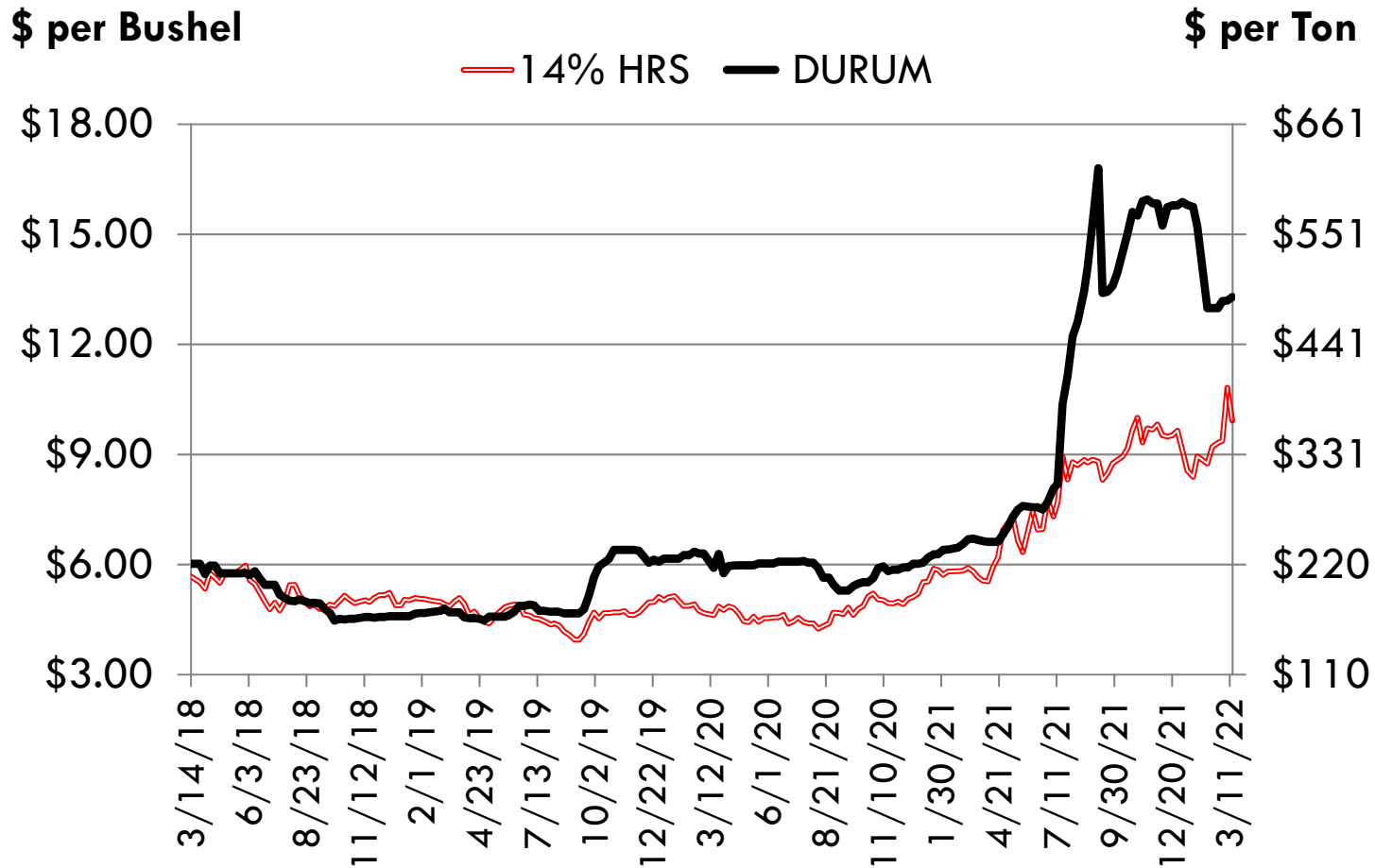
Chicago – Soft Red Winter – World prices



3/9/22



# Average N.D. Hard Red Spring and Durum Wheat Producer Bids



Source: Elevator weekly prices 3/14/22

# Average N.D. Durum Wheat Prices

