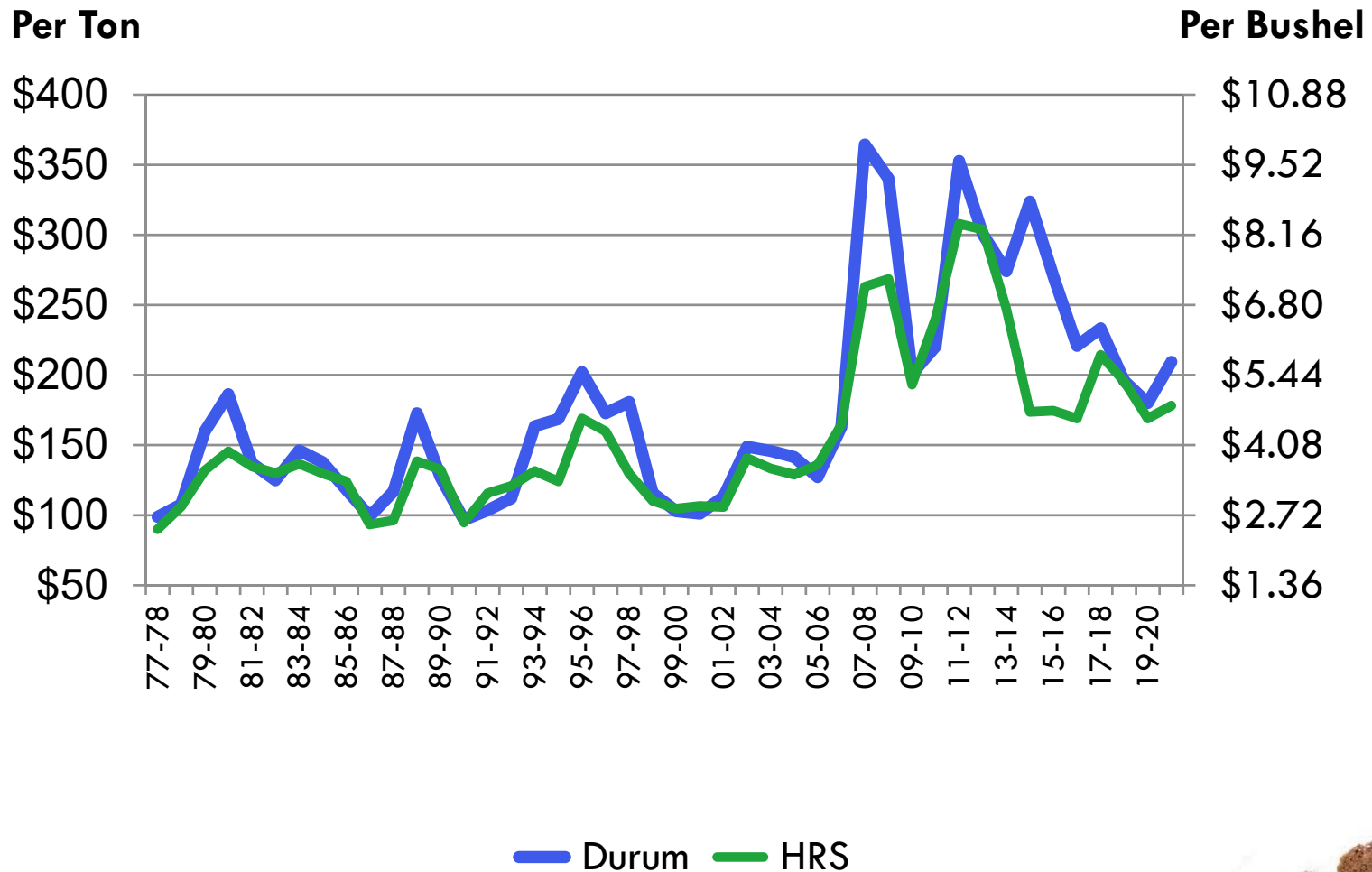
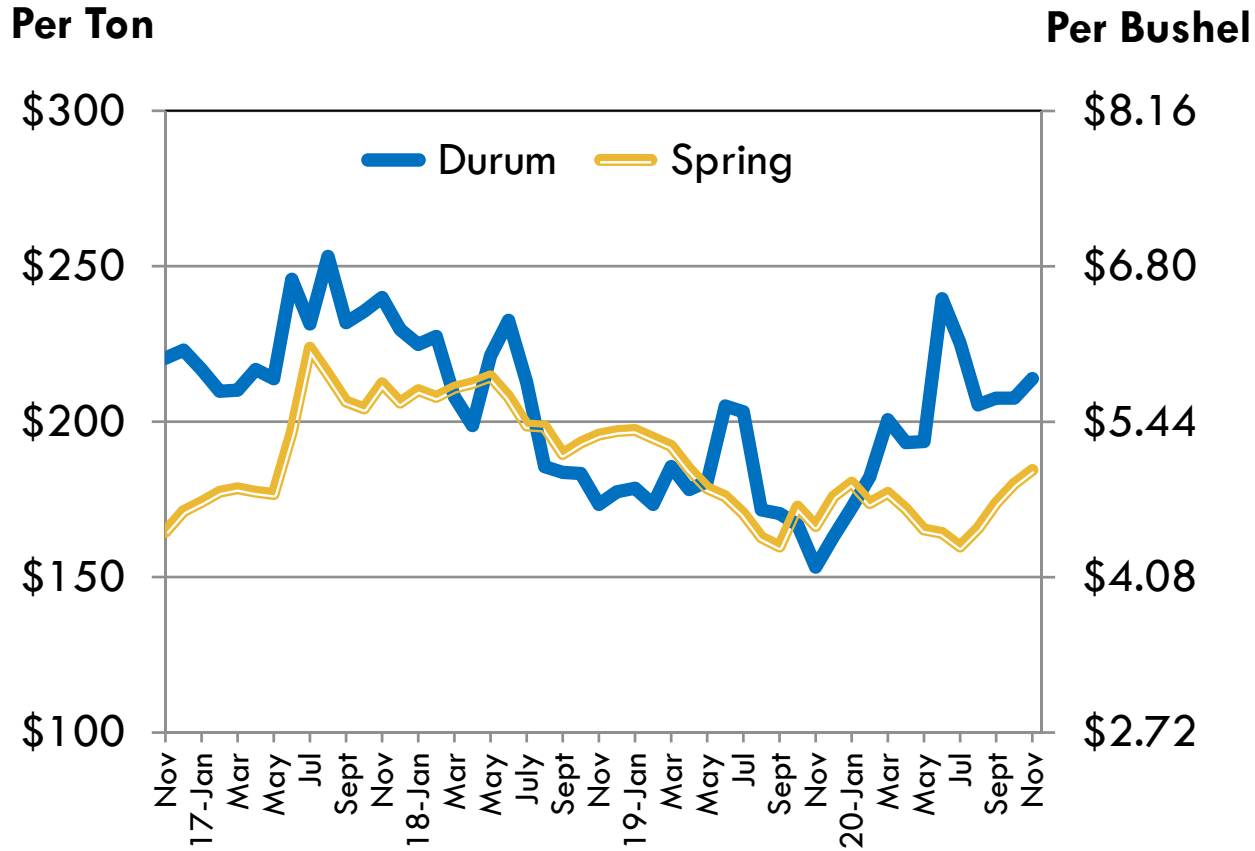


# U.S. AVERAGE FARM PRICES (Long Term)



# U.S. AVERAGE FARM PRICES



Source: USDA, Annual Price Summary  
12/31/2020

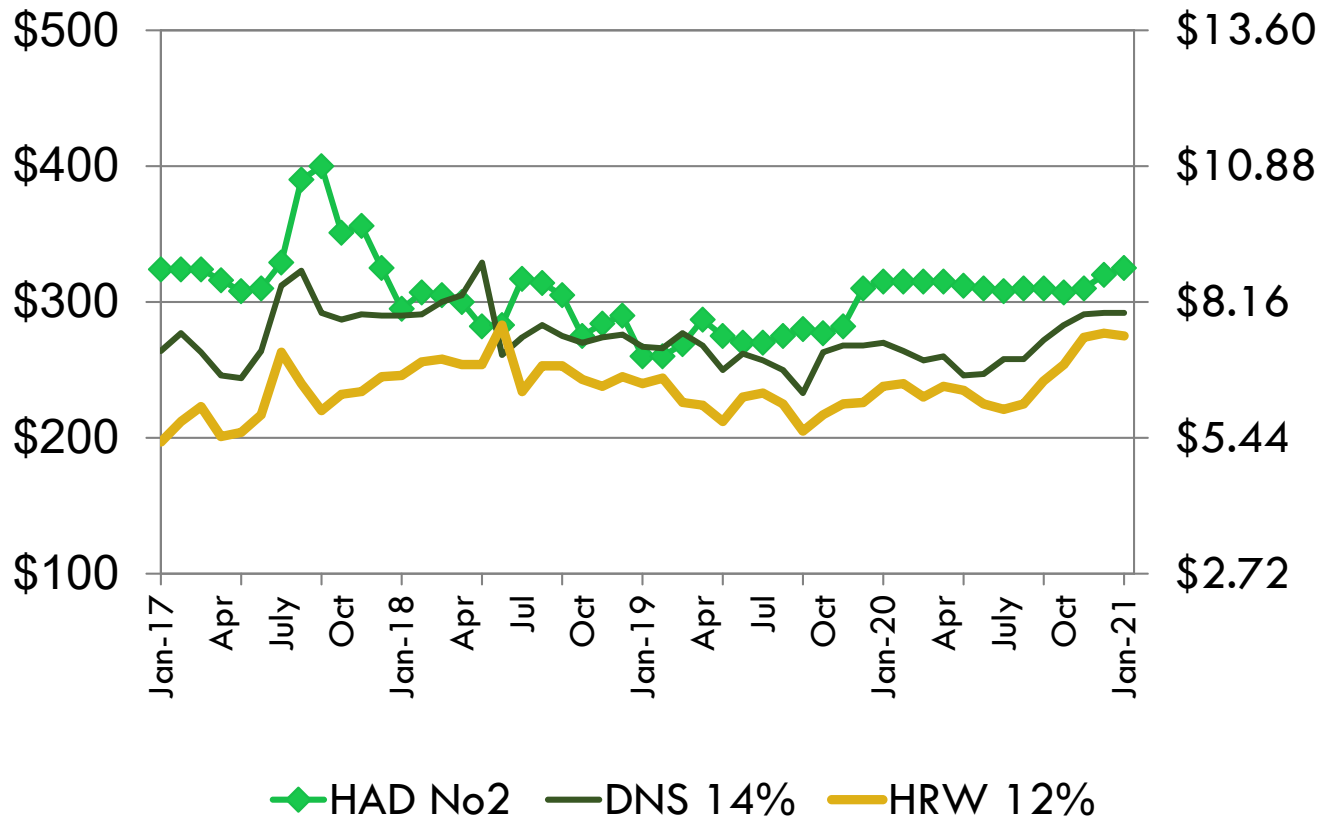


# PRICE TRENDS AT GULF



Per Metric Ton

Per Bushel



Source: USDA, Annual Price Summary  
1/12/21

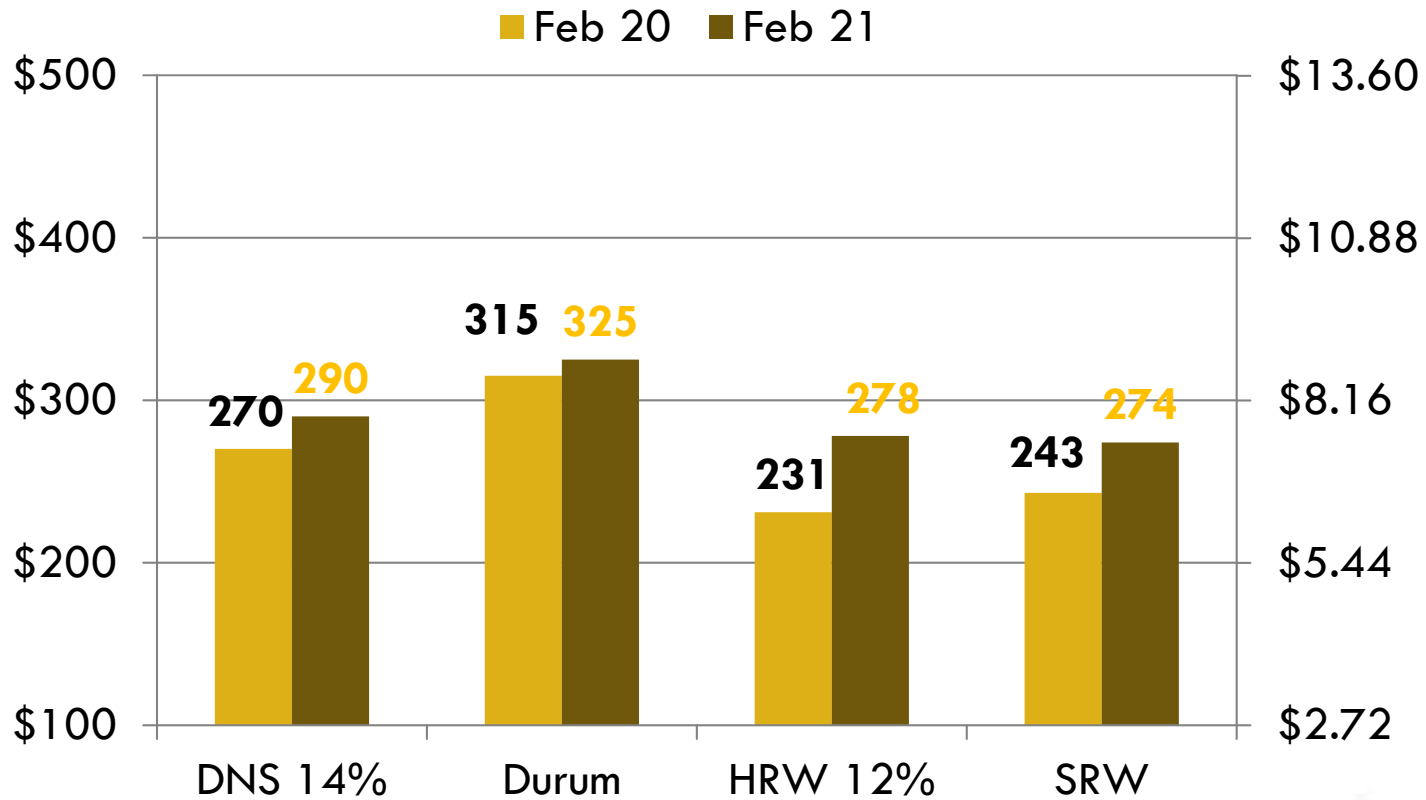


# U.S. WHEAT PRICE CHANGE AT THE GULF



\$ per Ton

\$ per Bushel

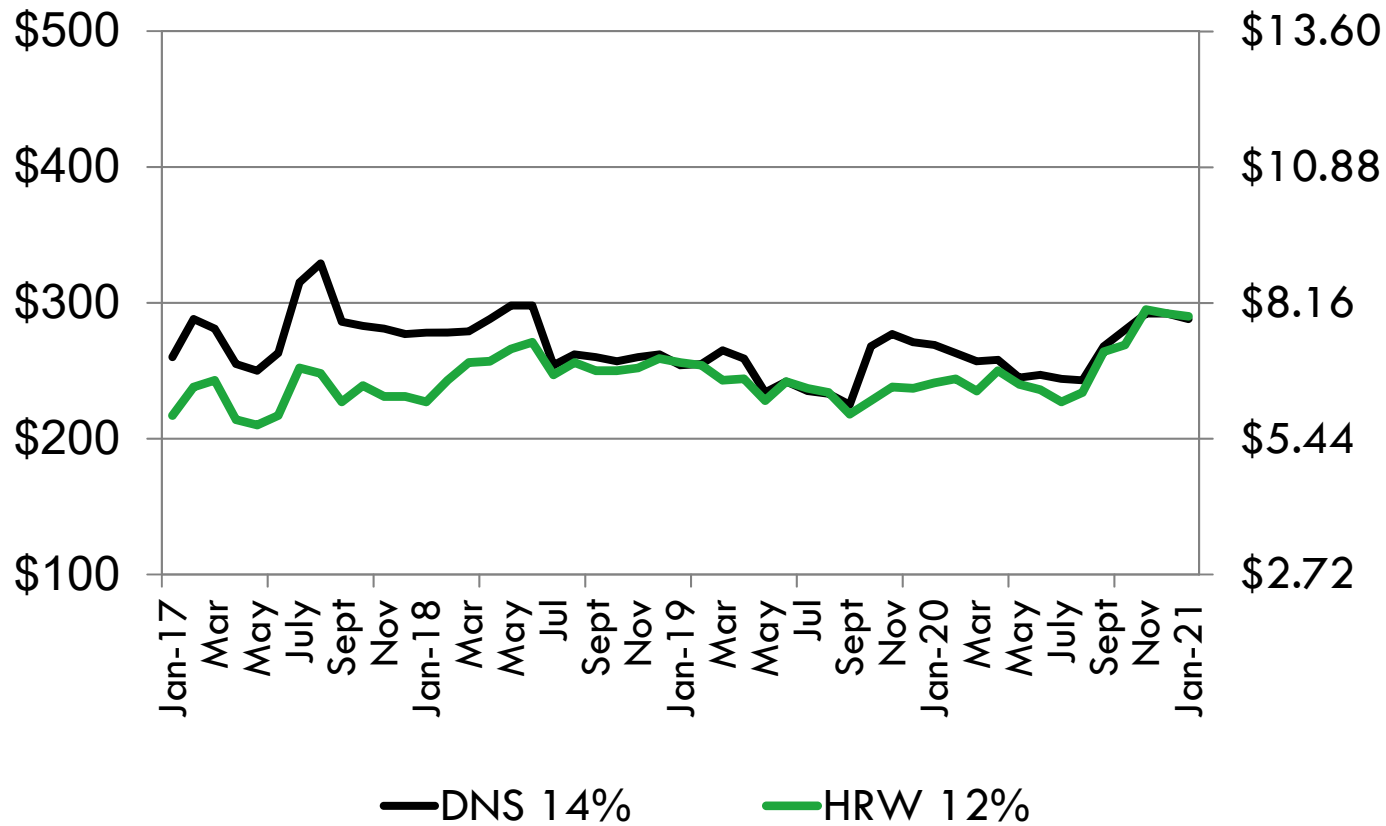


# PRICE TRENDS AT THE PNW



Per Metric Ton

Per Bushel

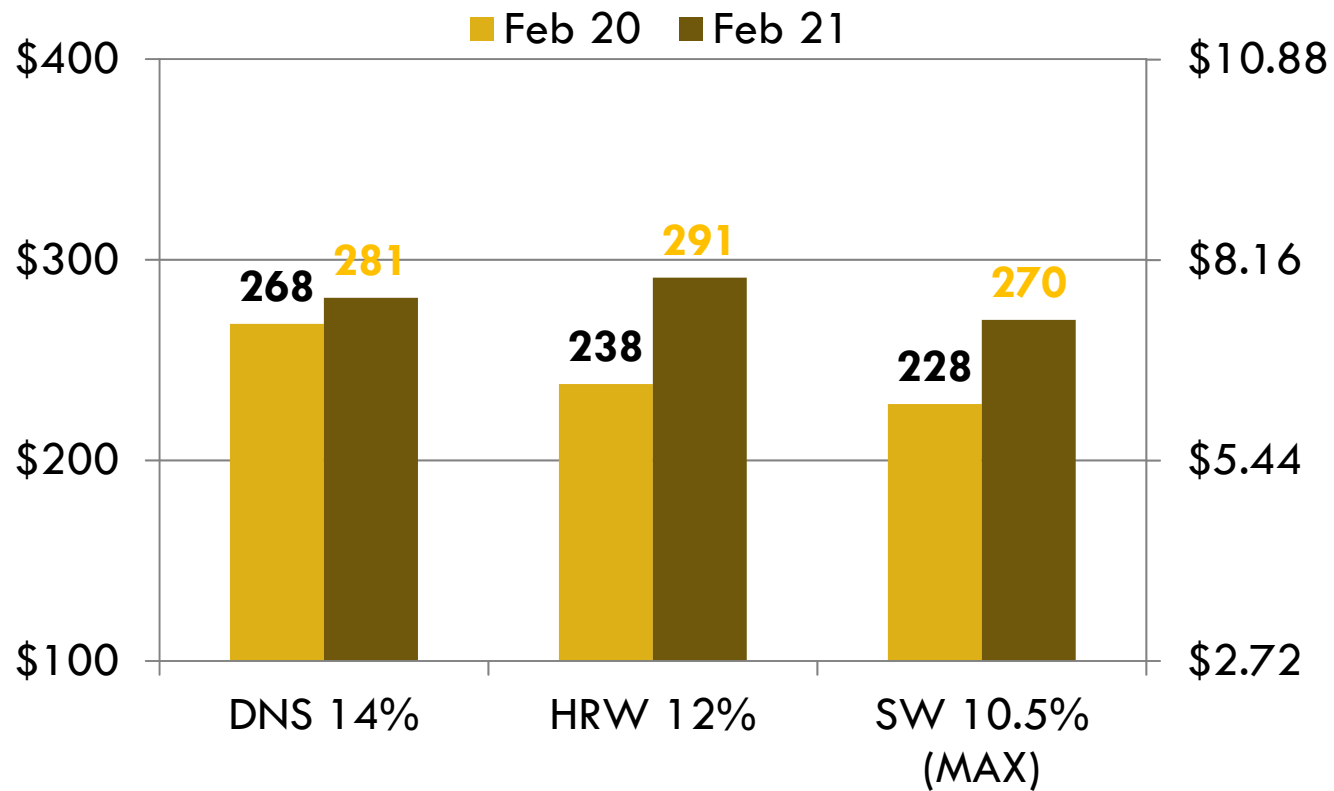


# U.S. WHEAT PRICE CHANGE AT THE PNW



\$ per Ton

\$ per Bushel

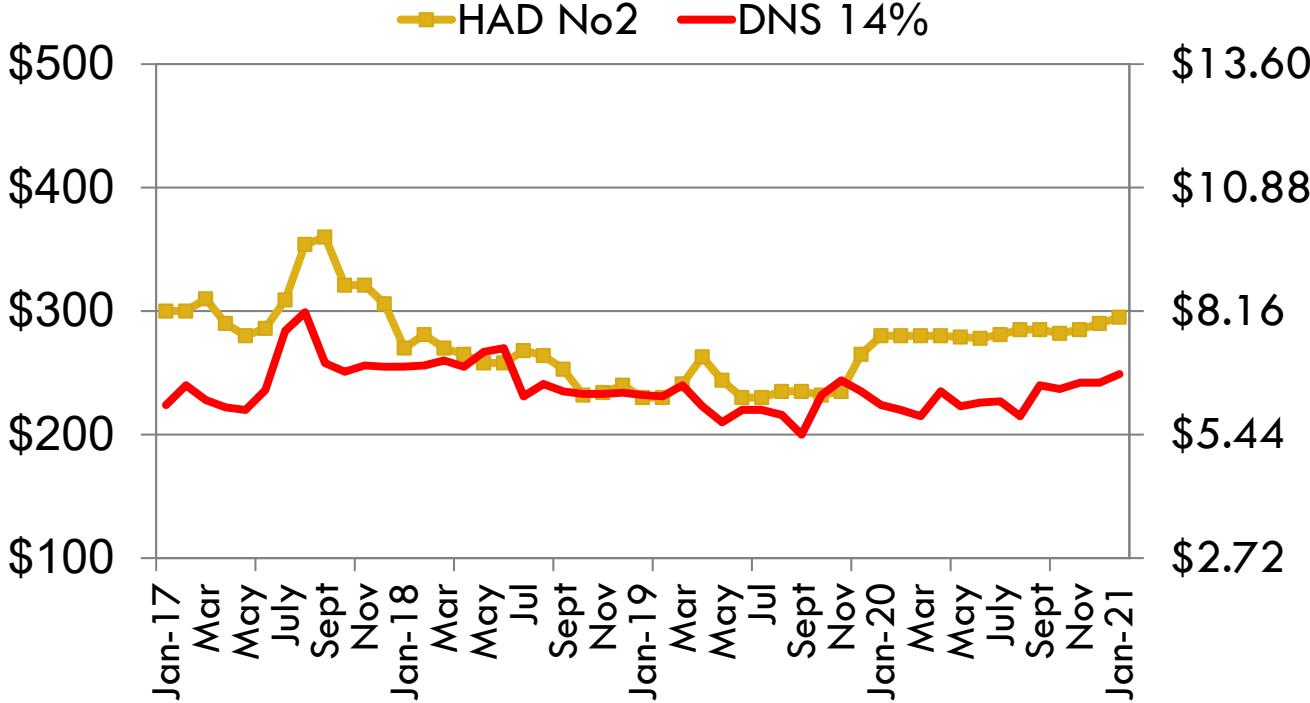


# PRICE TRENDS AT THE LAKES



Per Metric Ton

Per Bushel



Source: USDA, Annual Price Summary  
1/12/21

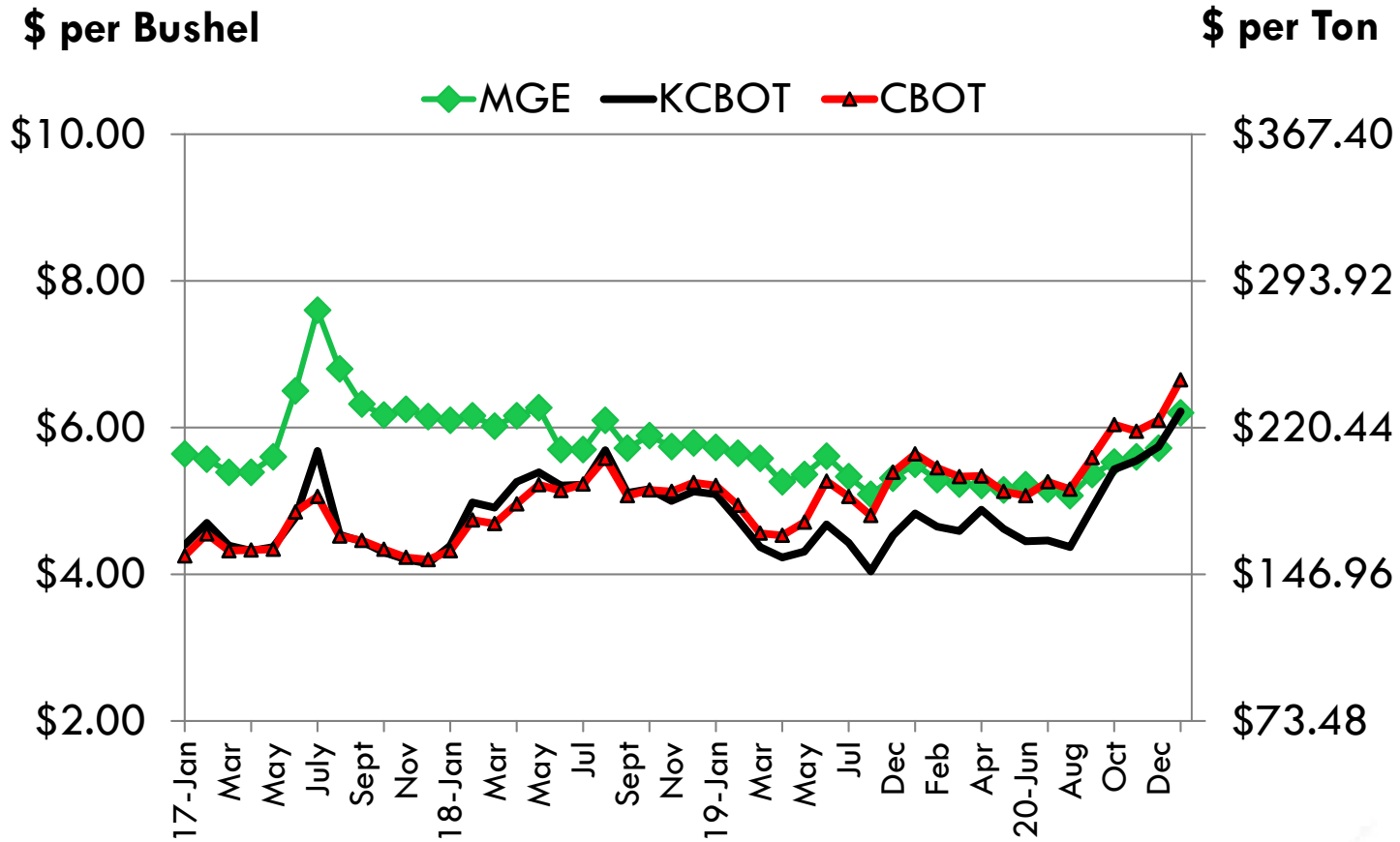


# U. S. FUTURES TRENDS

Minneapolis – Hard Red Spring

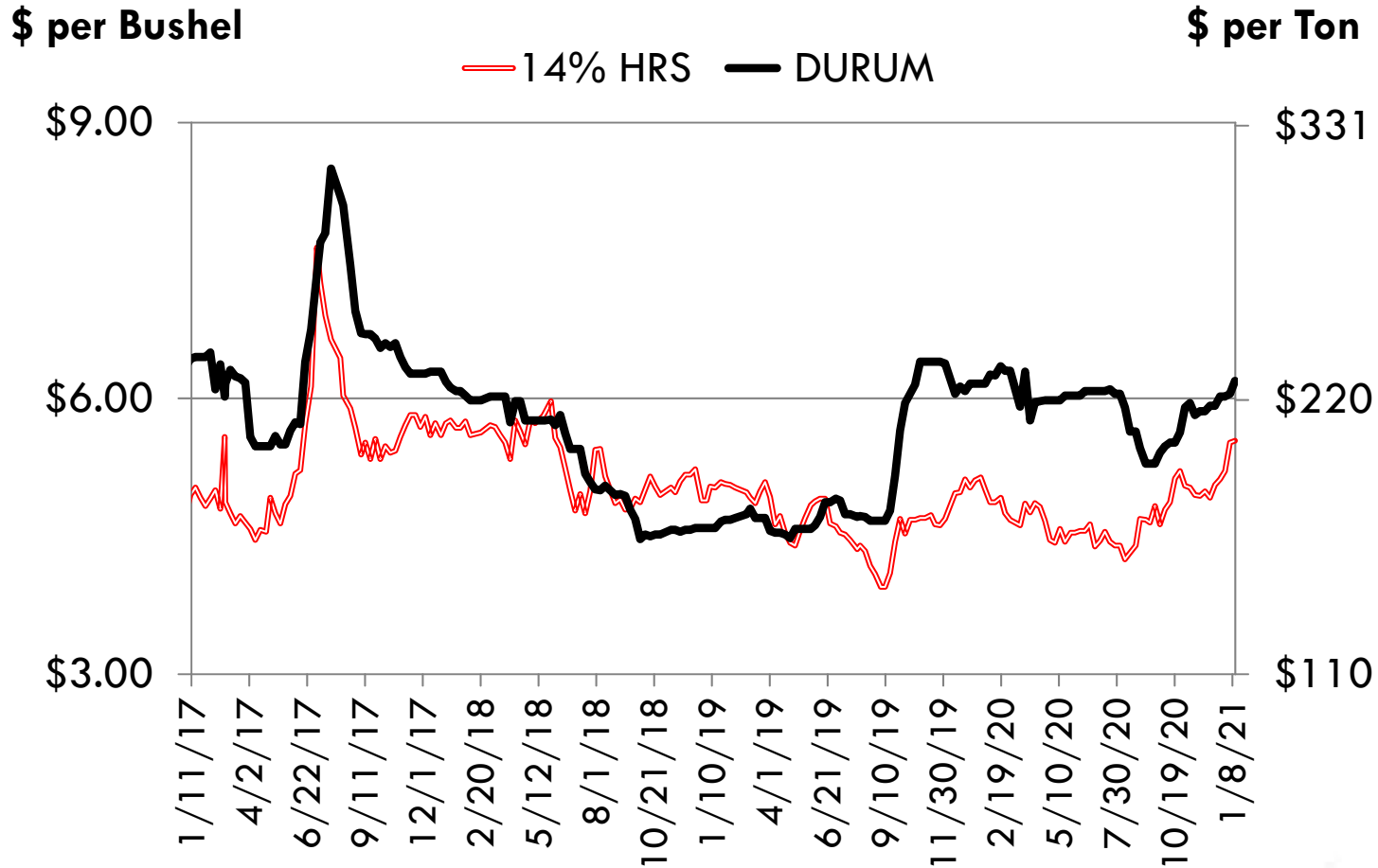
Kansas City – Hard Red Winter

Chicago – Soft Red Winter – World prices





# Average N.D. Hard Red Spring and Durum Wheat Producer Bids



Source: Elevator weekly prices  
1/11/21

