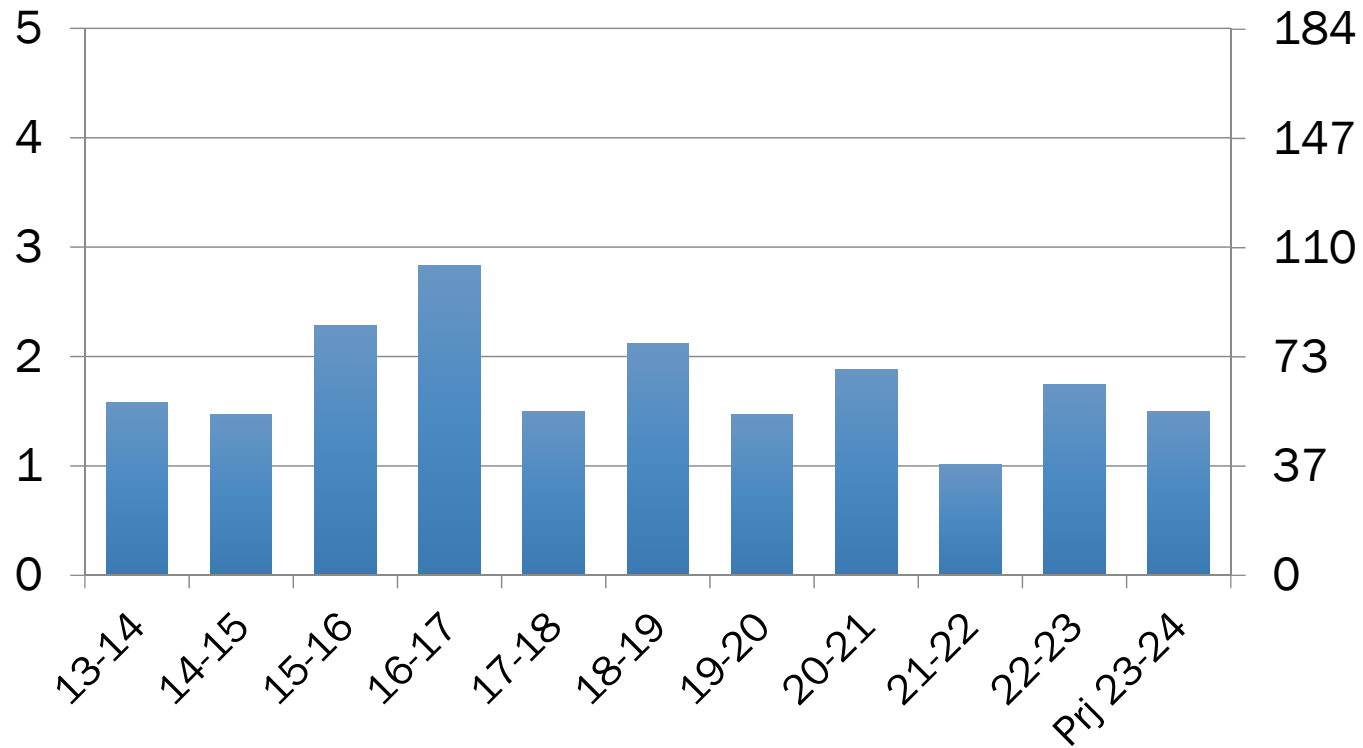


# U.S. DURUM PRODUCTION

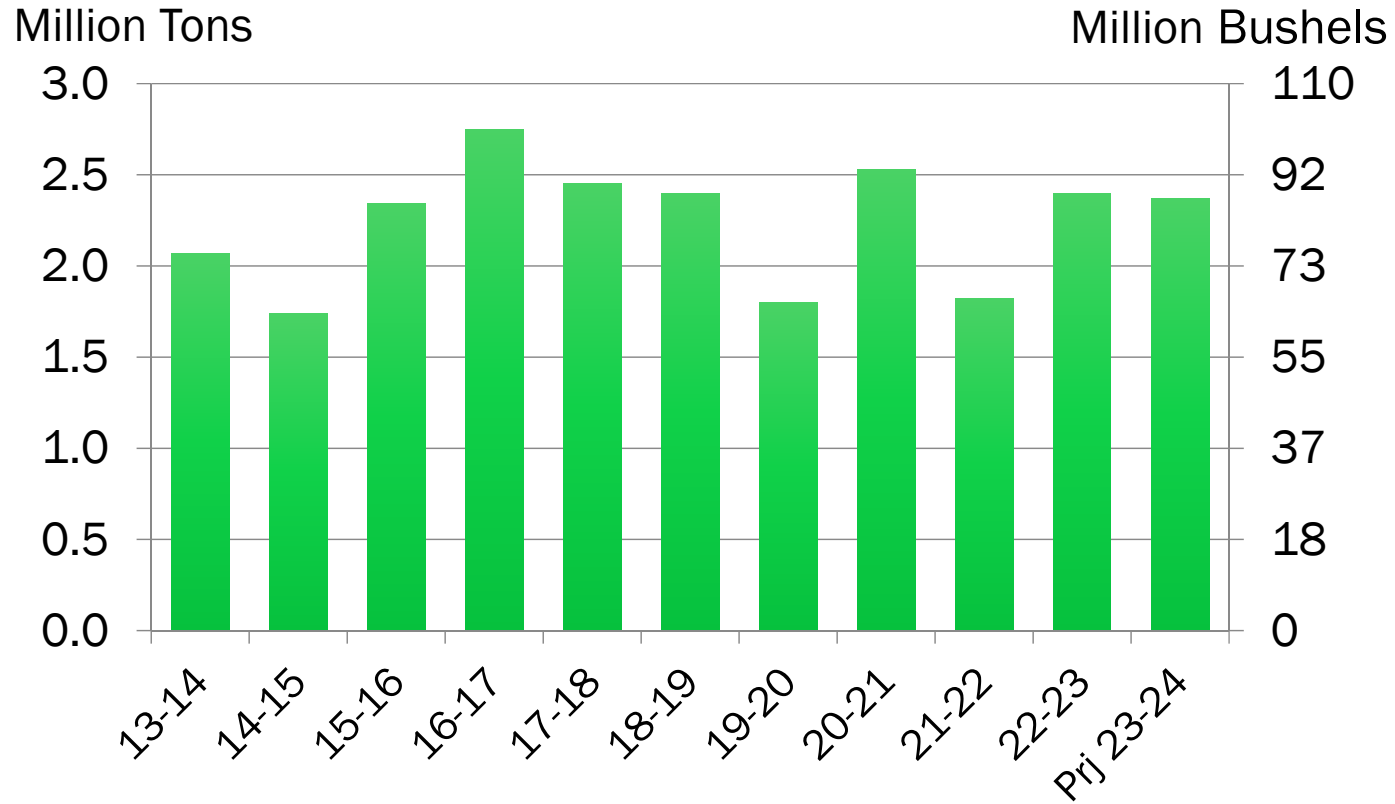
Million Tons

Million Bushels



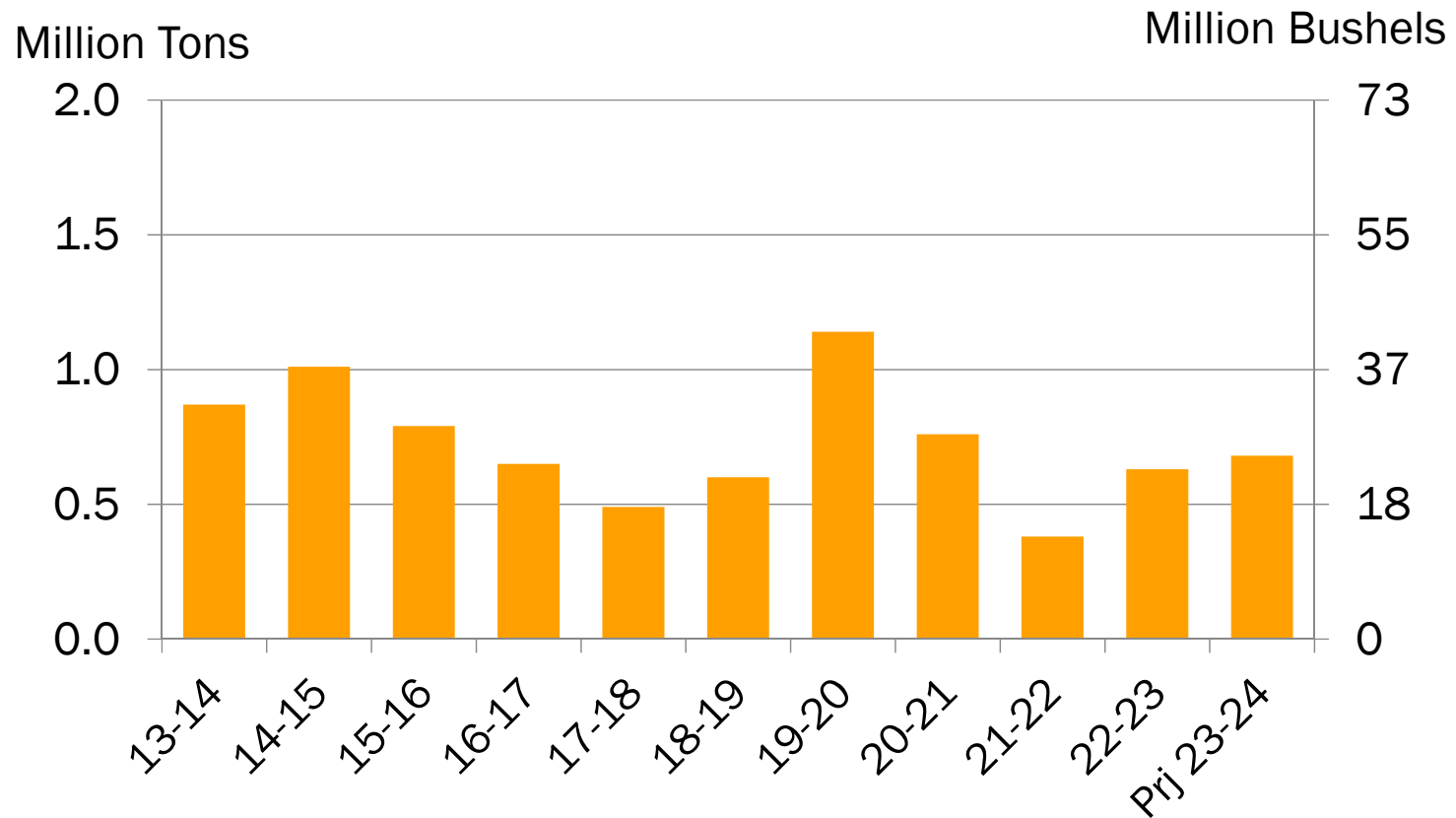
Source: USDA July 23  
Xldata/both/S&D prod, consump, carryover

# U.S. DURUM DOMESTIC USE



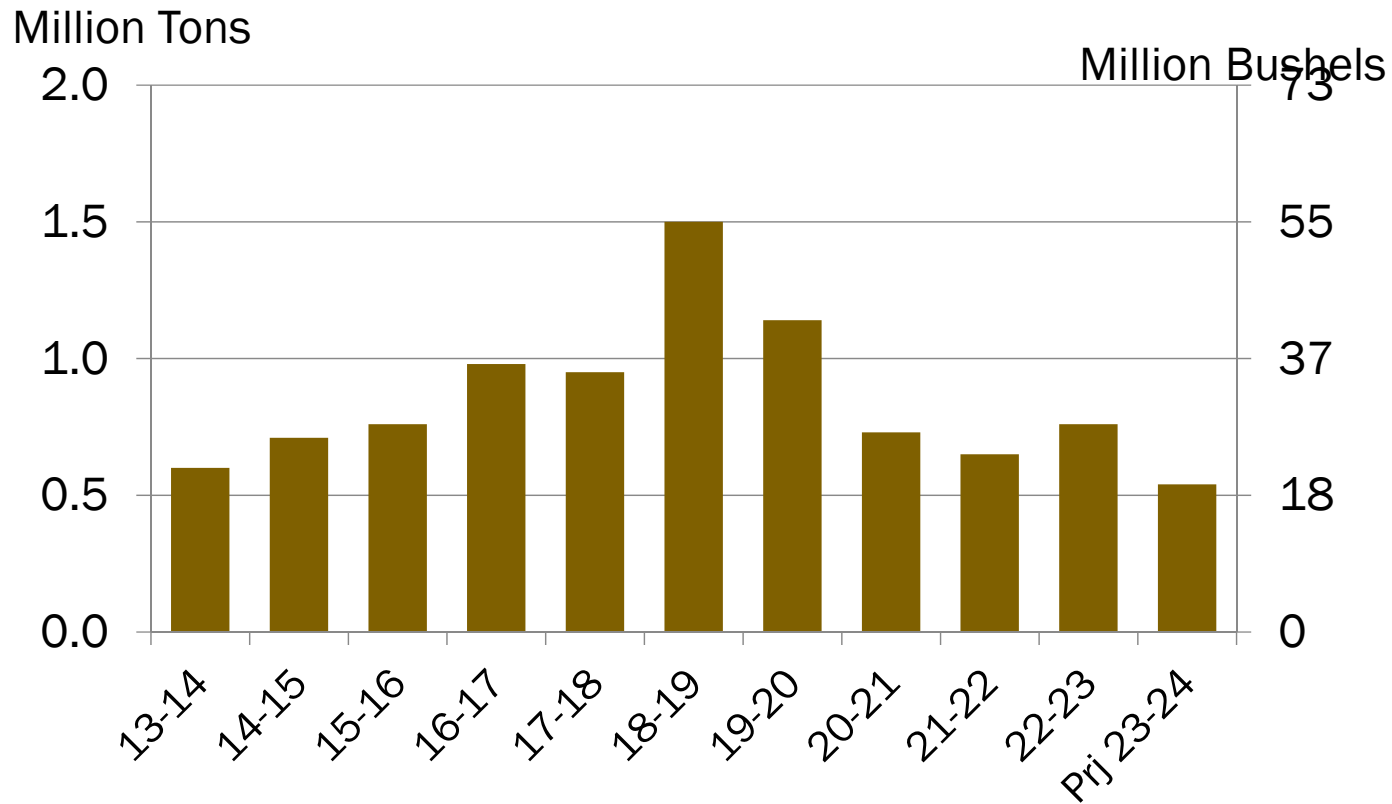
Source: USDA July 23  
Xldata/both/S&D prod, consump, carryover

# U.S. DURUM EXPORTS



Source: USDA July 23  
Xldata/both/S&D prod, consump, carryover

# U.S. DURUM STOCKS



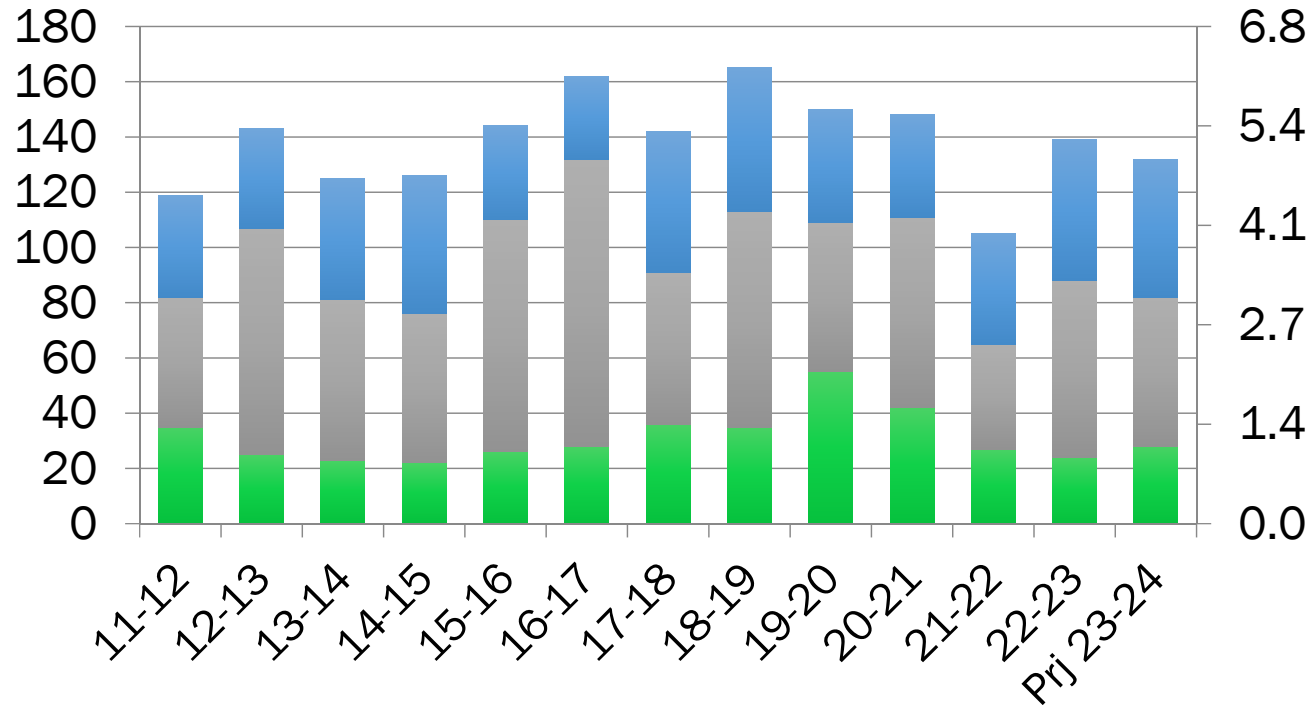
Source: USDA July 23  
Xldata/both/S&D prod, consump, carryover

# DURUM SUPPLIES IN THE U.S.

Million Bushels

Million Tons

■ Beg Stocks ■ Production ■ Imports



Source: USDA July 23

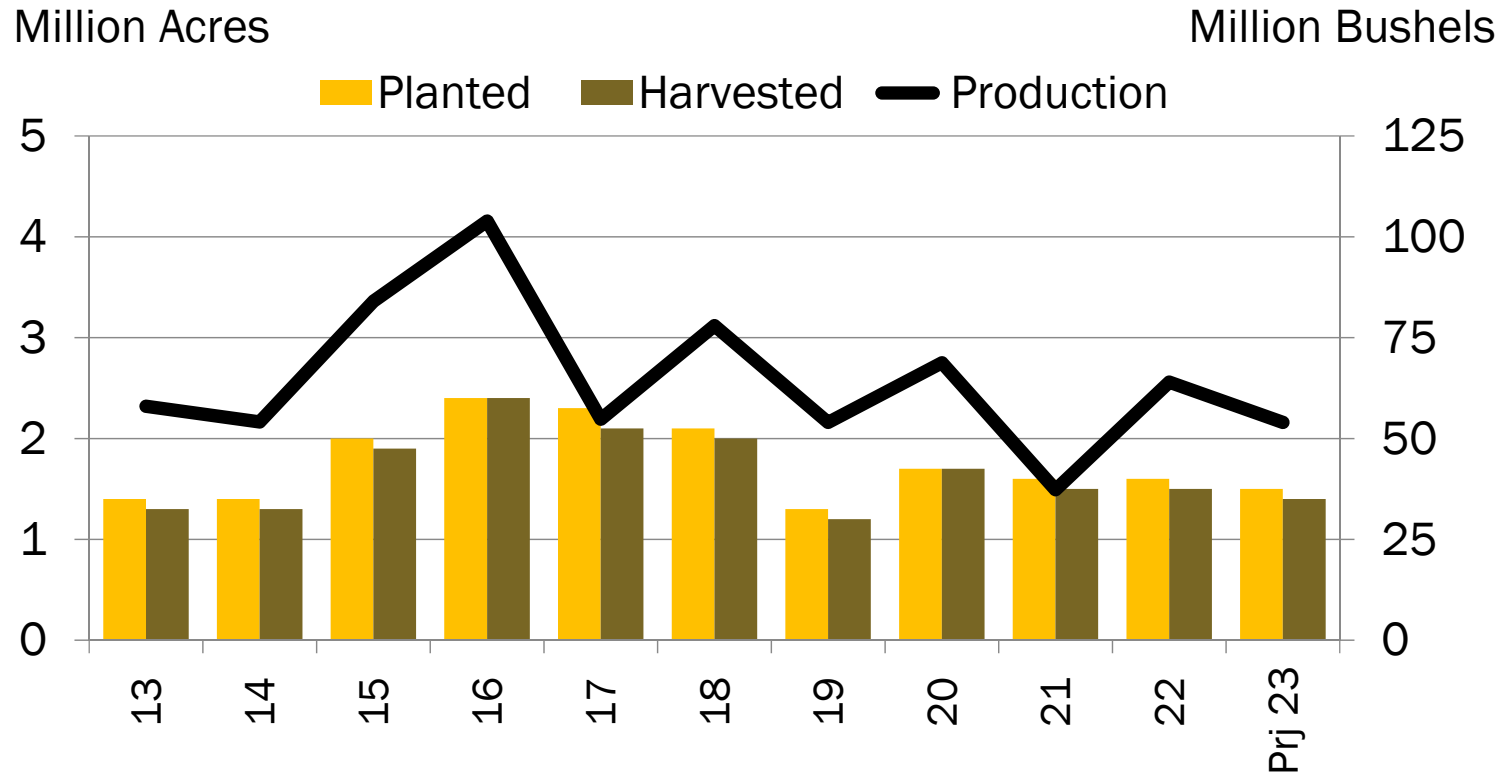
# U.S. DURUM WHEAT PRODUCTION

Acres-Bushels

	Planted	Harvested	Yield	Production
2013	1.4	1.3	43.3	58.0
2014	1.4	1.3	40.2	54.1
2015	2.0	1.9	44.0	84.0
2016	2.4	2.4	44.0	103.9
2017	2.3	2.1	26.0	54.8
2018	2.1	2.0	39.5	78.0
2019	1.3	1.2	45.8	54.0
2020	1.7	1.7	41.4	68.8
2021	1.6	1.5	24.3	37.3
2022	1.6	1.6	40.5	64.0
2023	1.5	1.4	37.9	54.0
5 Yr Avg	2.0	1.9	39.3	71.9
10 Yr Avg	1.8	1.7	39.9	68.4

USDA July

# U.S. DURUM WHEAT PLANTINGS & PRODUCTION



Source: USDA July

# U.S. DURUM SUPPLY & DEMAND

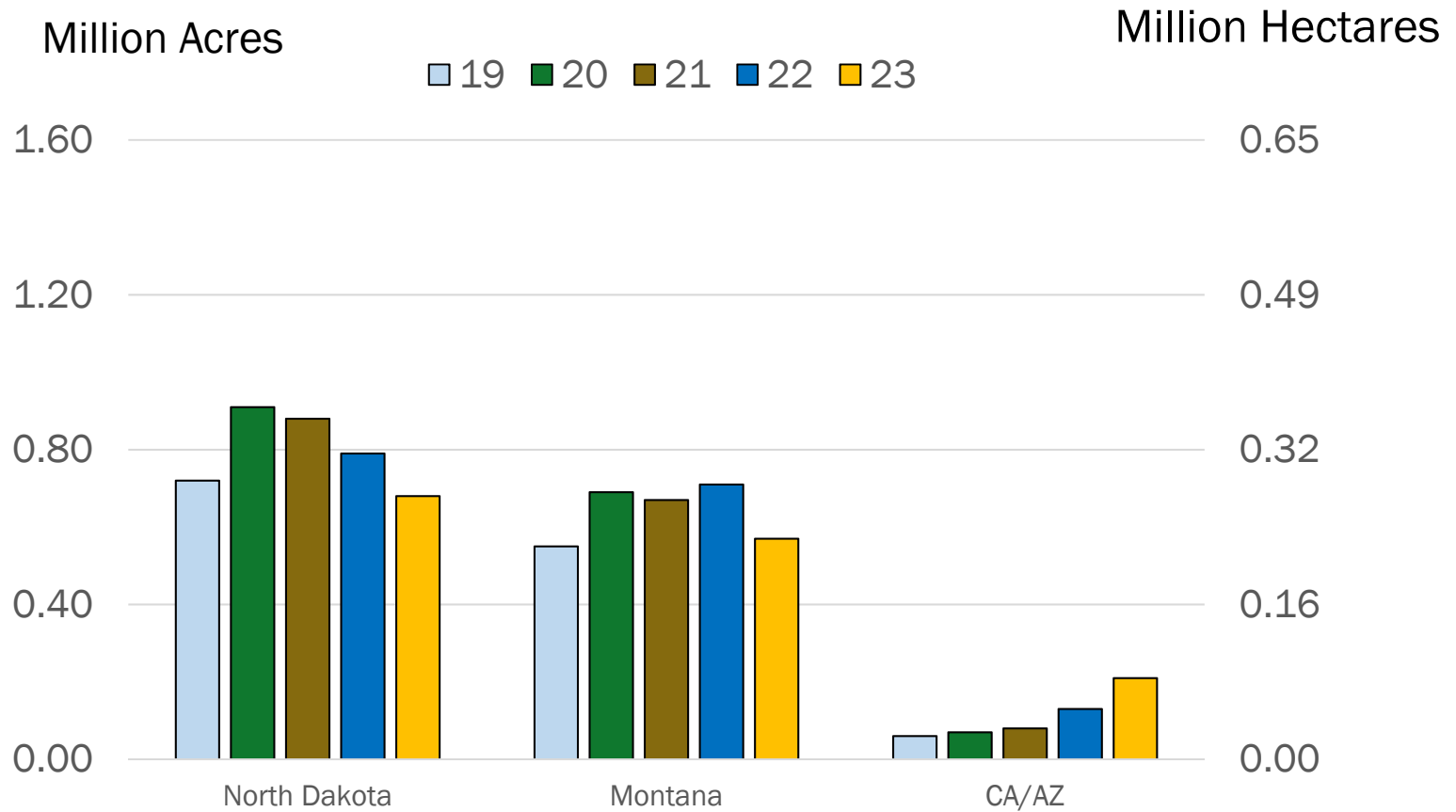
Million Bushels

	19-20	20-21	21-22	22-23	Proj 23-24	Change
Beg Stocks	55	42	27	24	28	+17%
Production	54	69	38	64	54	-16%
Imports	41	37	40	51	50	-2%
Tot Supply	150	148	105	139	132	-5%
Dom Use	66	93	67	88	87	-1%
Exports	42	28	14	23	25	+9%
Tot Use	108	121	81	111	112	+1%
End Stocks	42	27	24	28	20	-29%
S/U Ratio	39%	22%	30%	25%	18%	

Source: USDA July 23  
Xldata/durum/S&D

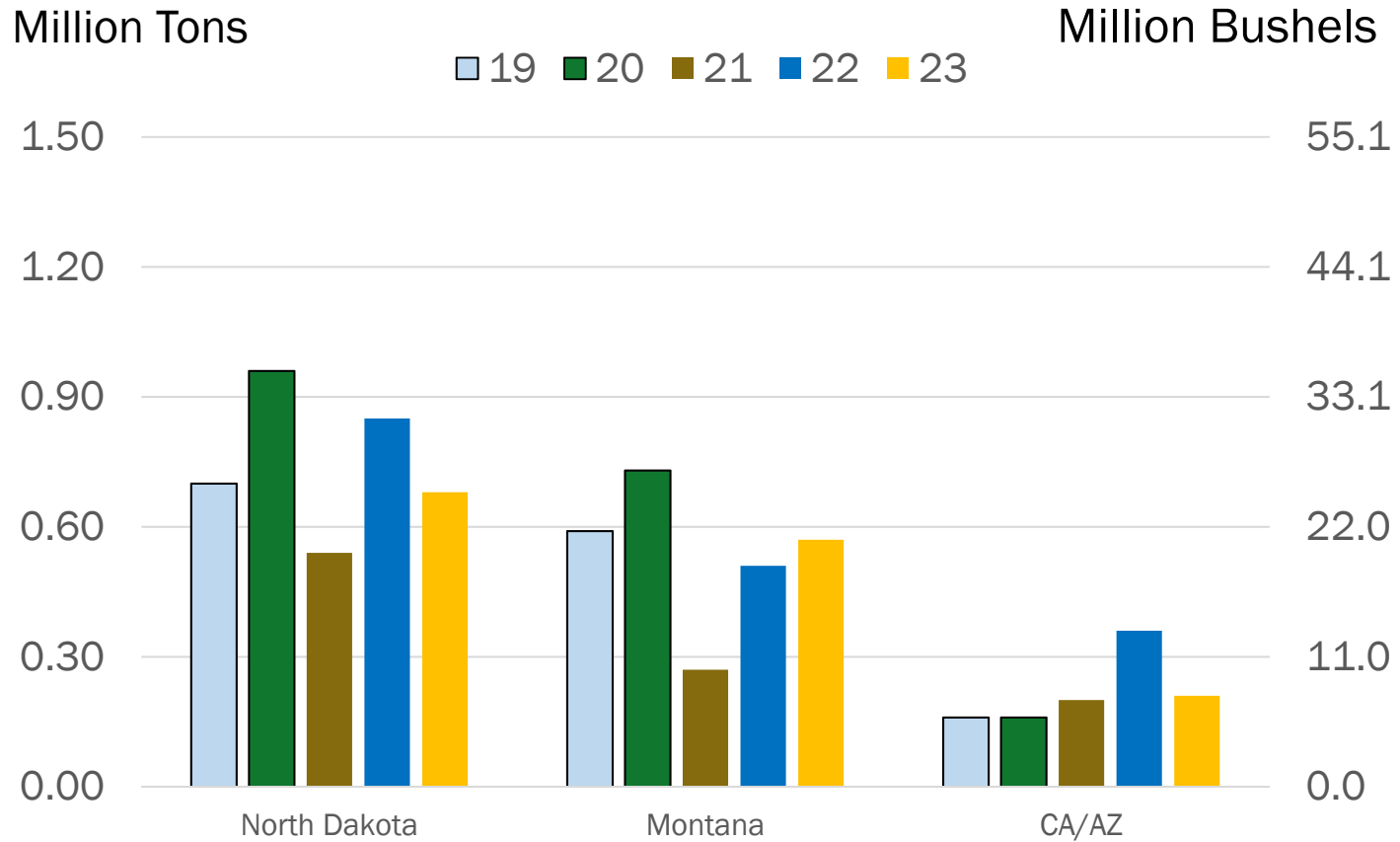


# U.S. DURUM WHEAT PLANTINGS BY STATE



Source: USDA July

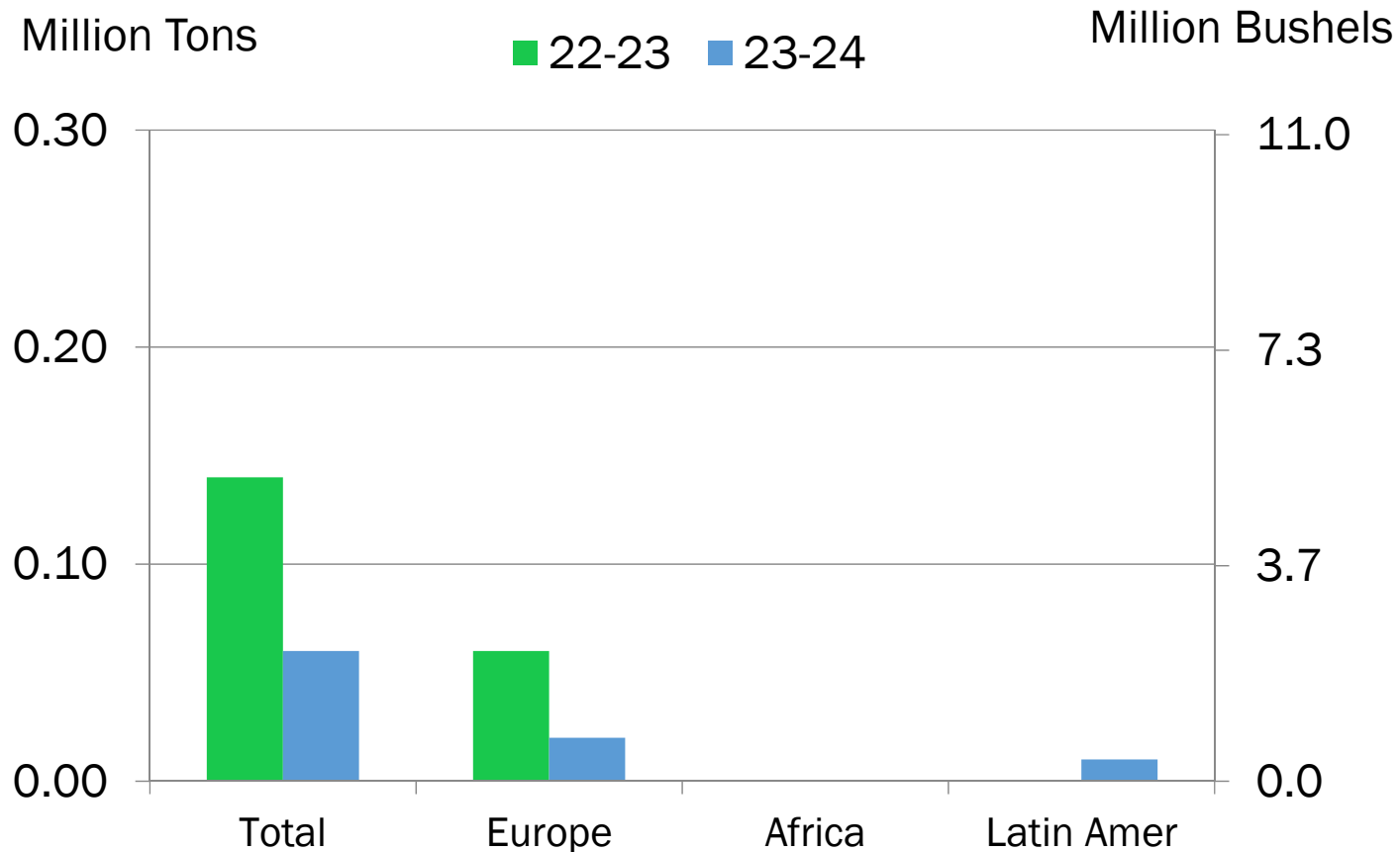
# U.S. DURUM WHEAT PRODUCTION BY STATE



Source: USDA July

# EXPORT PACE – U.S. DURUM WHEAT

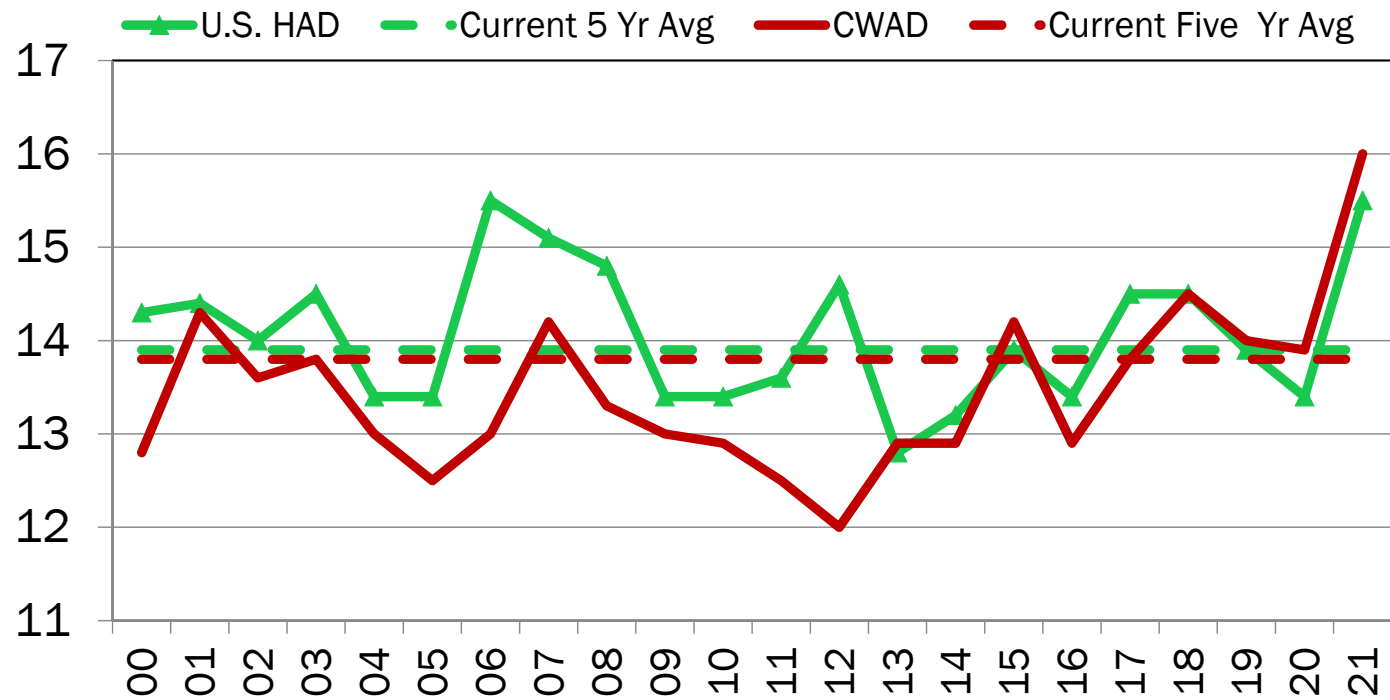
as of July 6, 2023



7/12/23

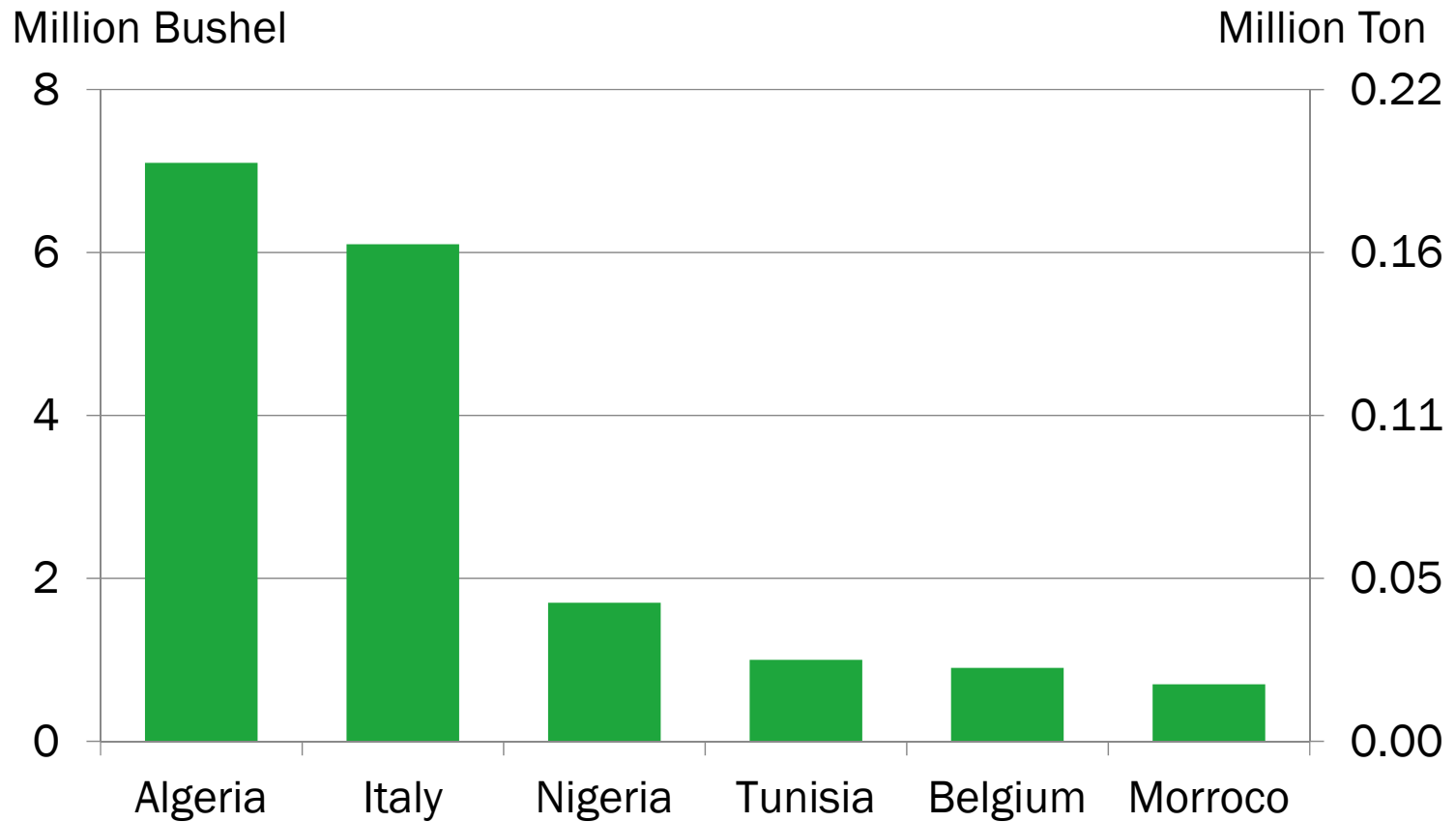
# COMPARATIVE U.S. WHEAT PROTEIN 12% Moisture Basis

Protein Content



10/15/21

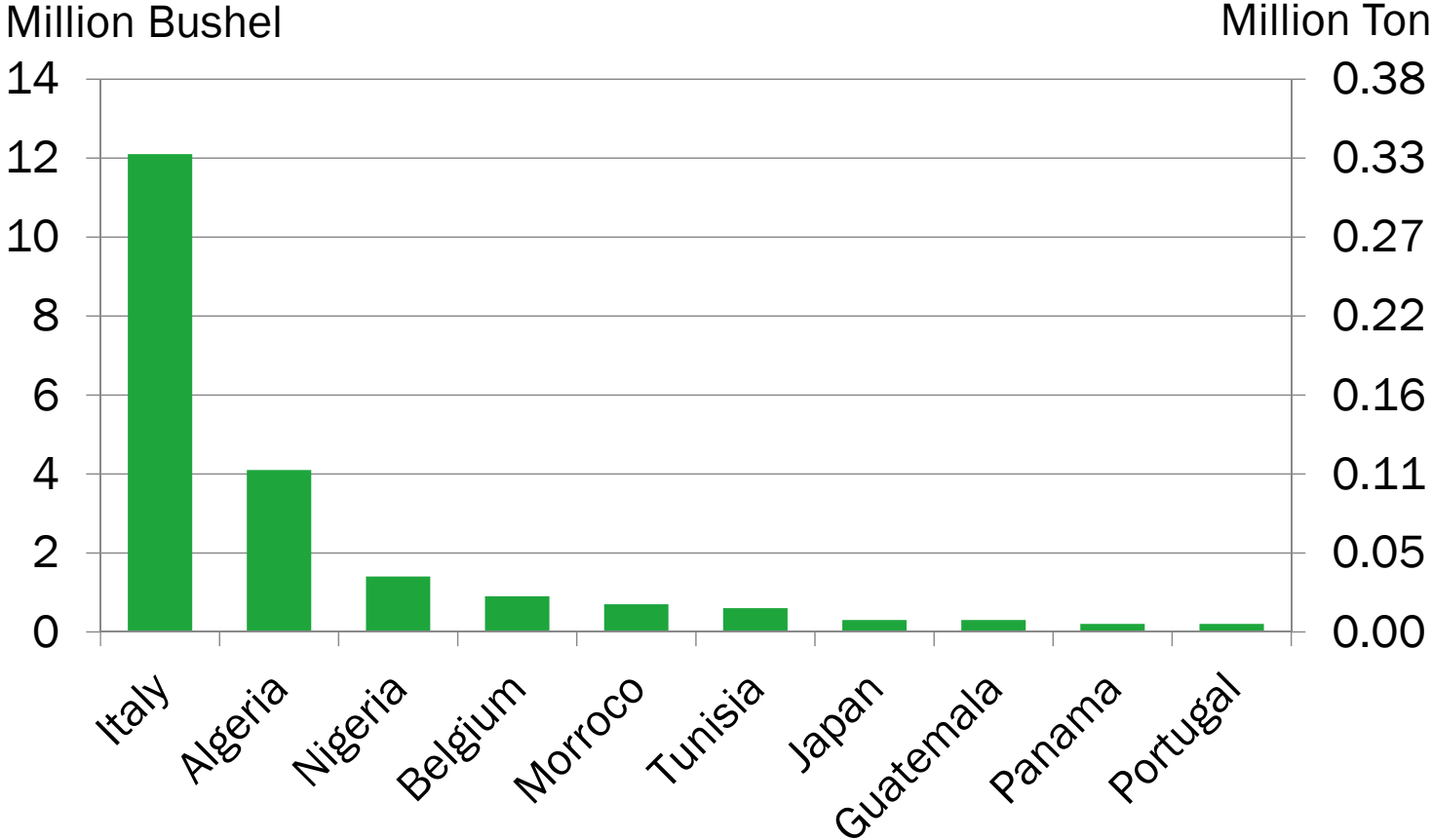
# TOP IMPORTERS OF U.S. DURUM IN MARKETING YEAR 2022-23



USDA Export Inspections  
Xldata/Both/Exports/Top 10 & 5 yr avg

# TOP IMPORTERS OF U.S. DURUM

## FIVE-YEAR AVERAGE (2018/19 - 2022/23)



USDA Export Inspections  
Xldata/Both/Exports/Top 10 & 5 yr avg