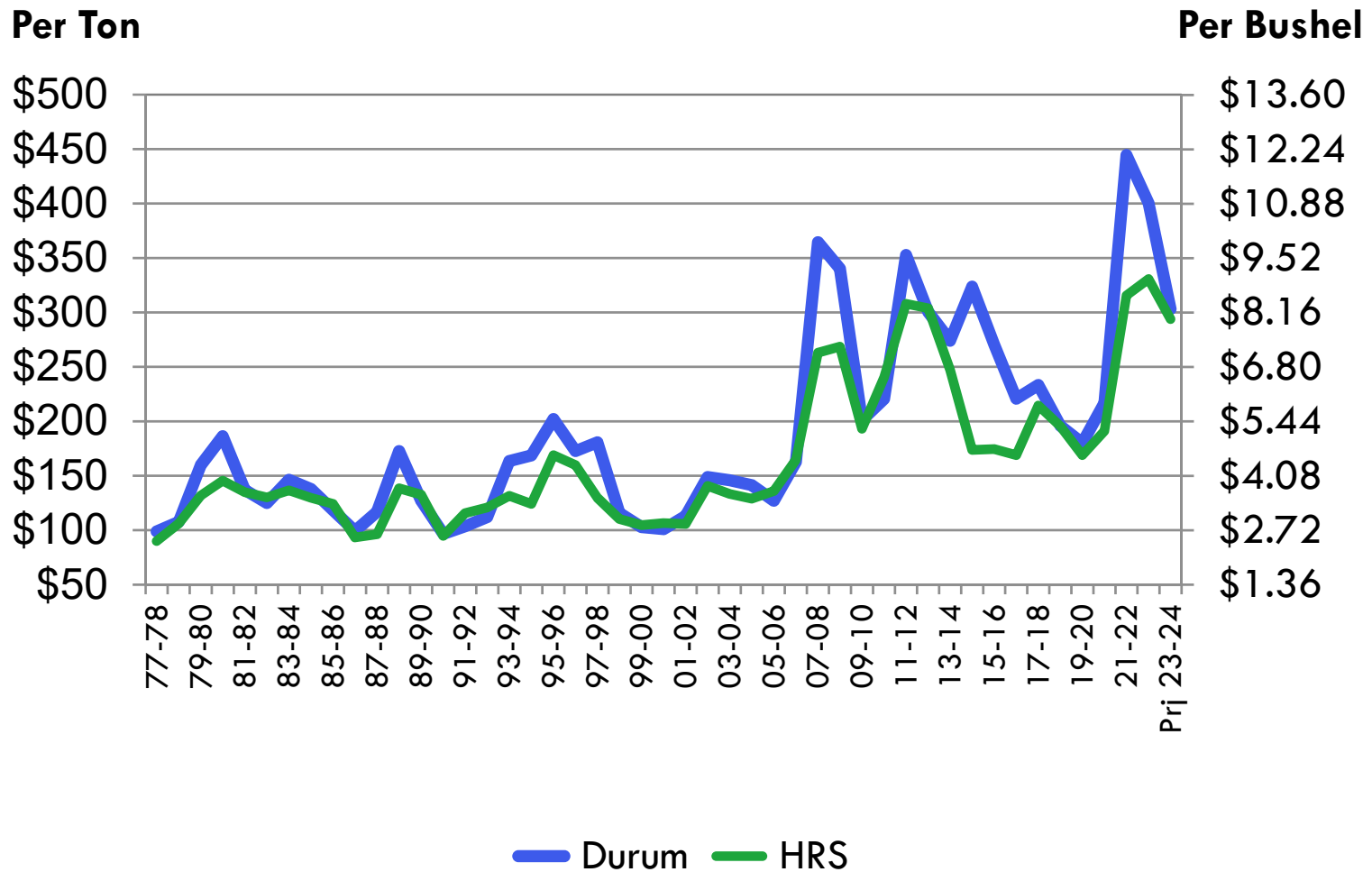


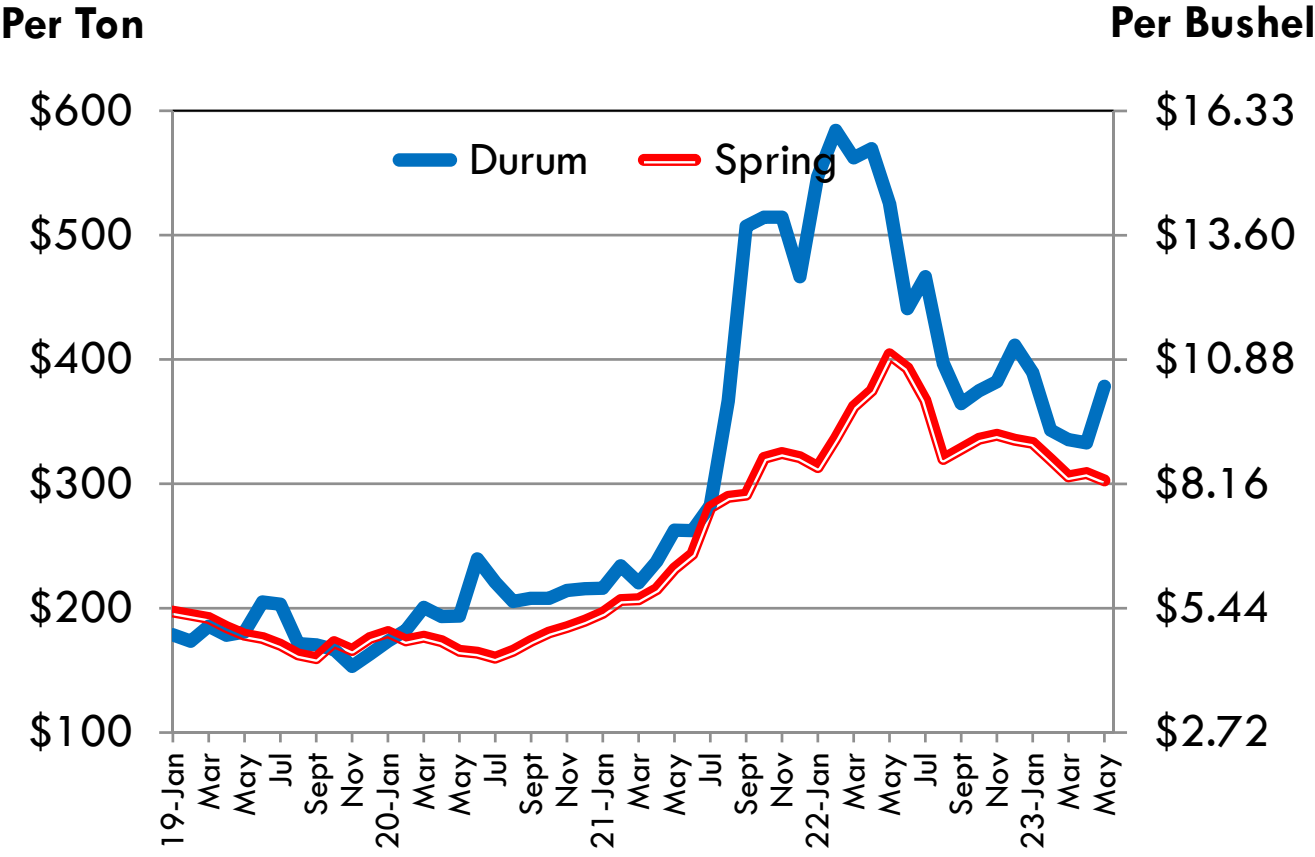
# U.S. AVERAGE FARM PRICES (Long Term)



Source: USDA, Annual Price Summary

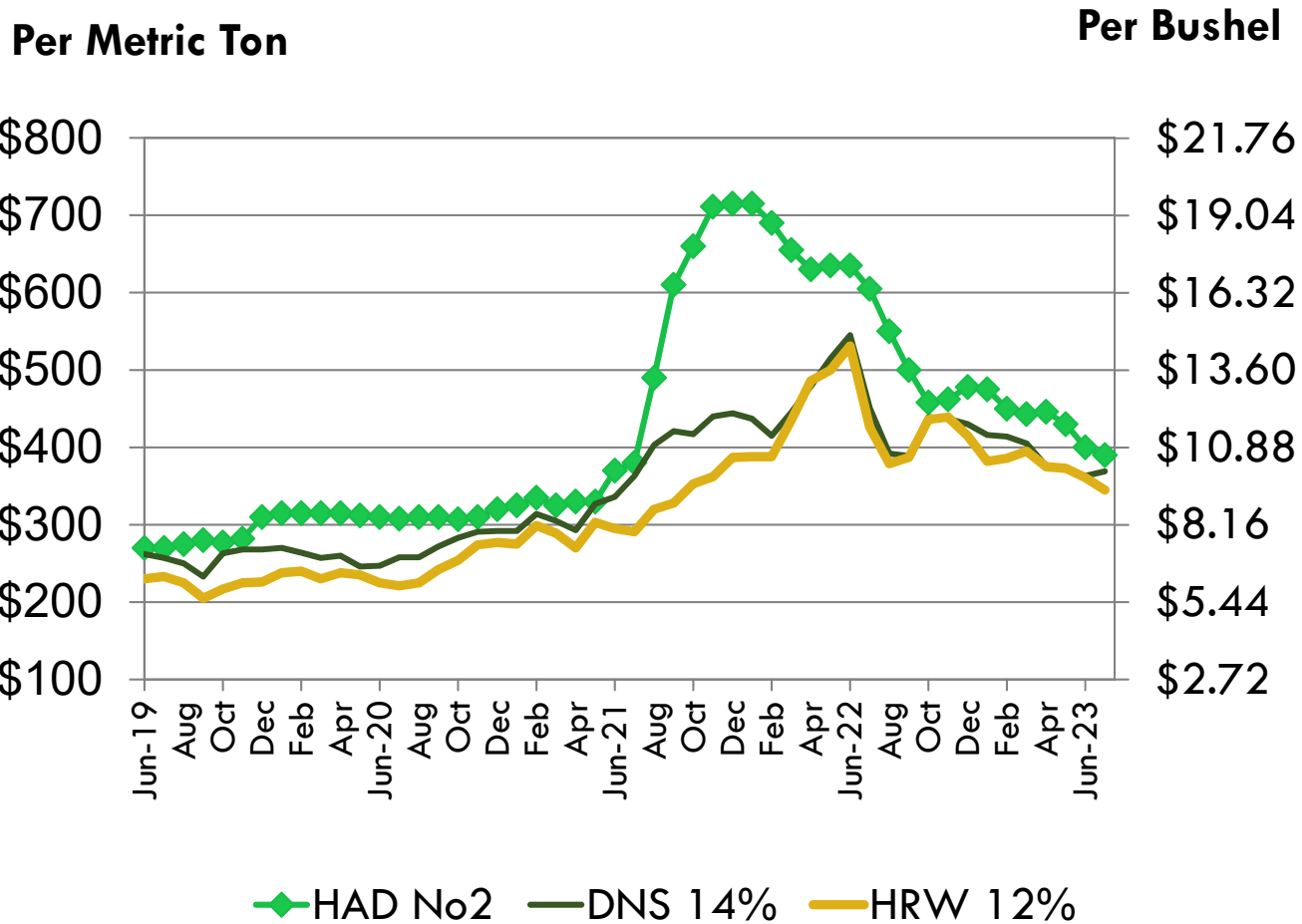
7/12/23

# U.S. AVERAGE FARM PRICES



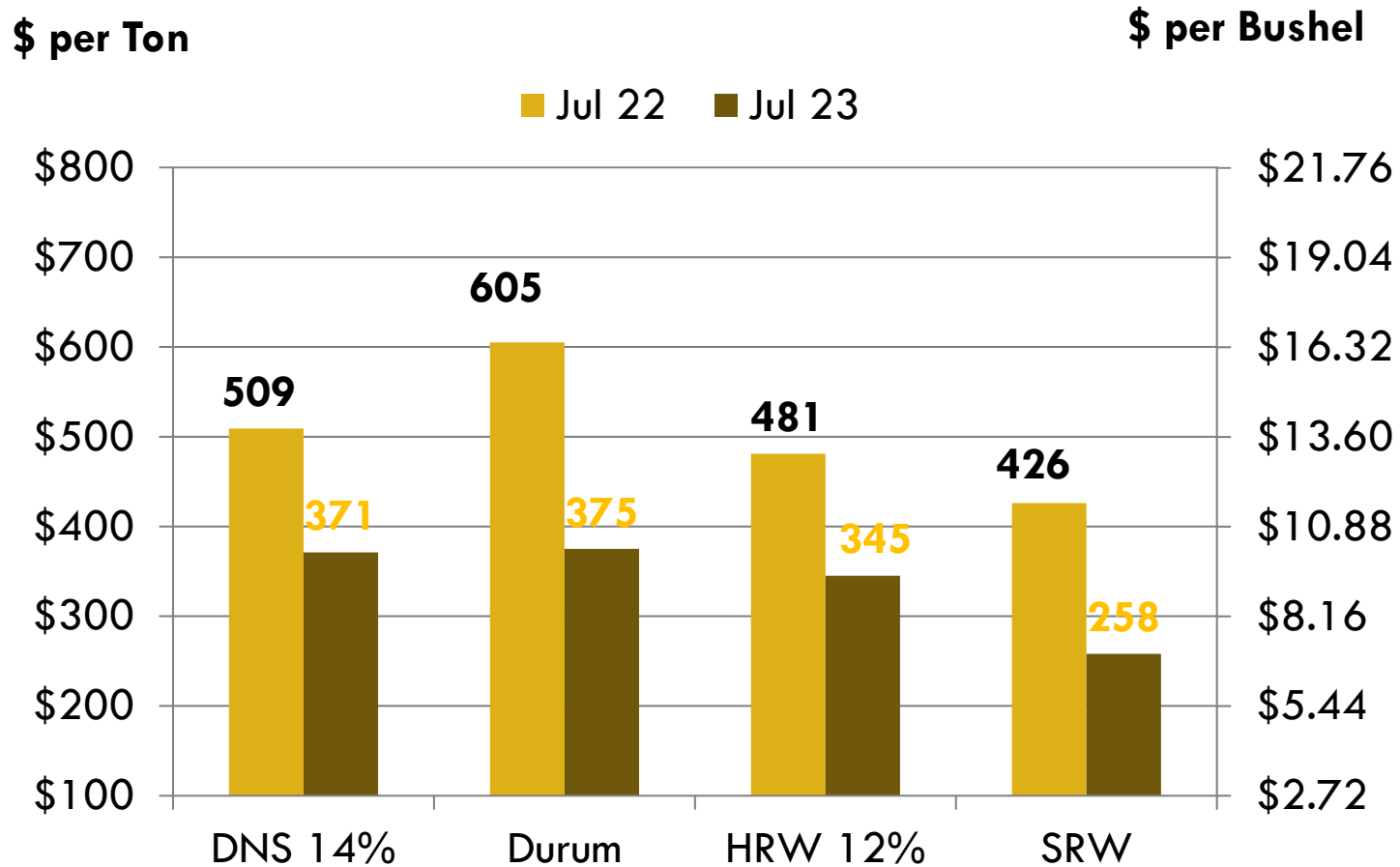
Source: USDA, Annual Price Summary  
6/30/2023

# PRICE TRENDS AT GULF



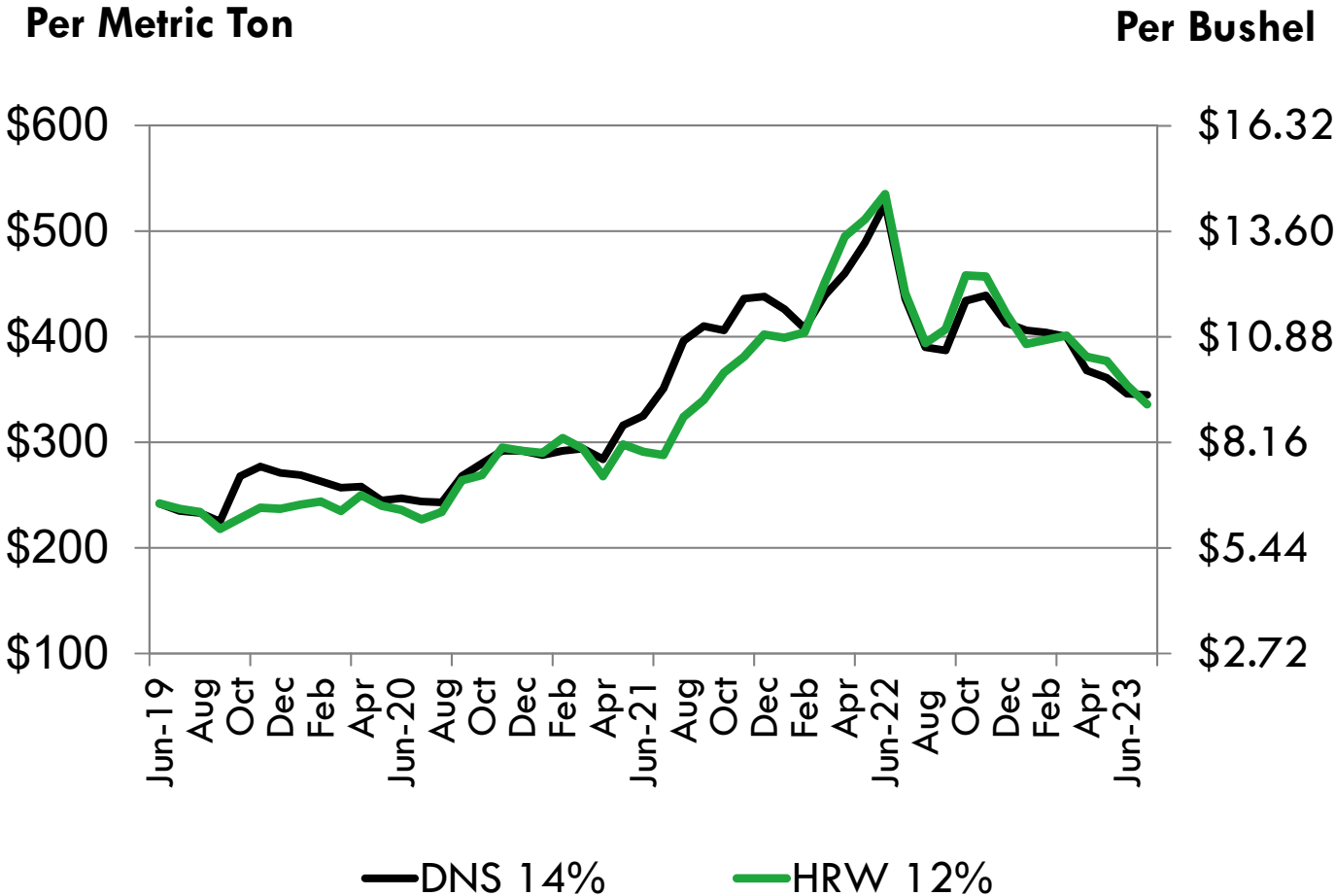
Source: USDA, Annual Price Summary  
7/12/23

# U.S. WHEAT PRICE CHANGE AT THE GULF



7/6/23

# PRICE TRENDS AT THE PNW

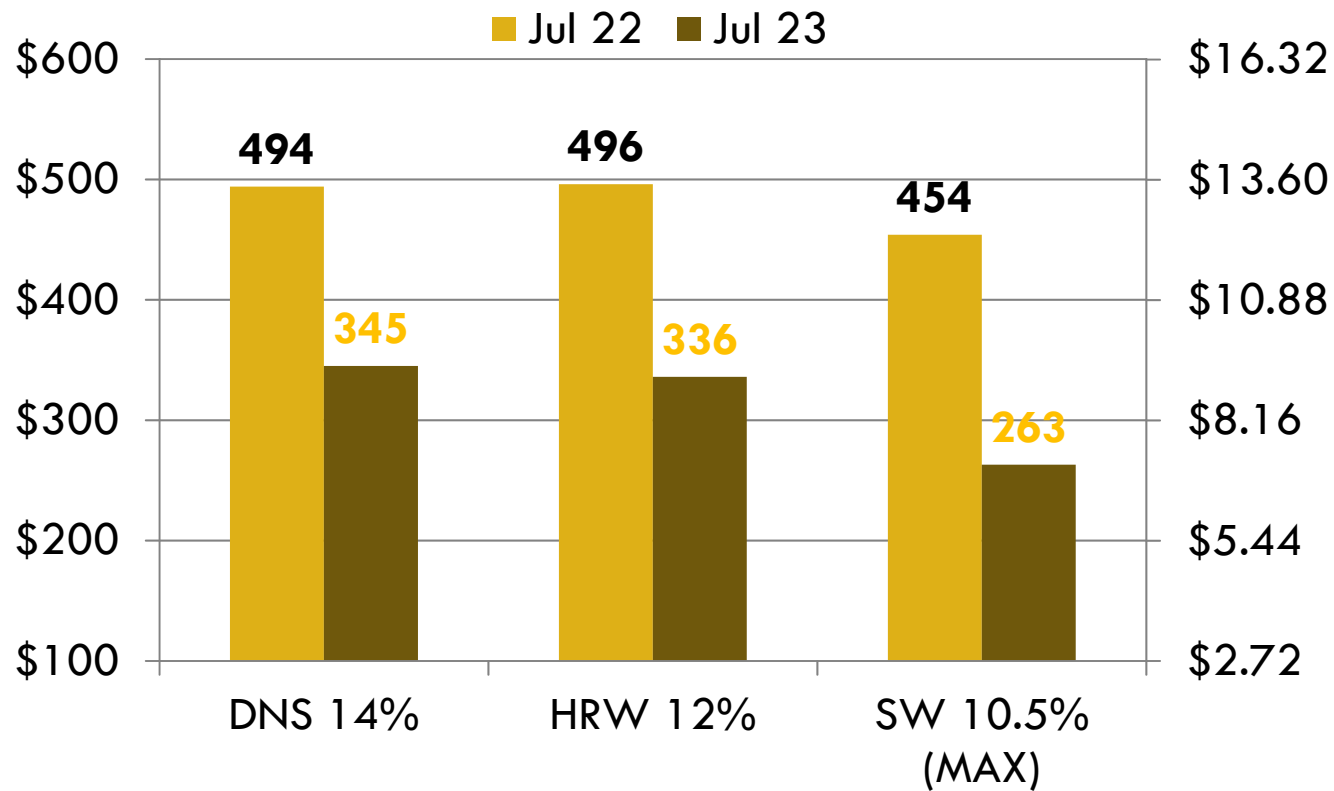


Source: USDA, Annual Price Summary  
7/12/23

# U.S. WHEAT PRICE CHANGE AT THE PNW

\$ per Ton

\$ per Bushel

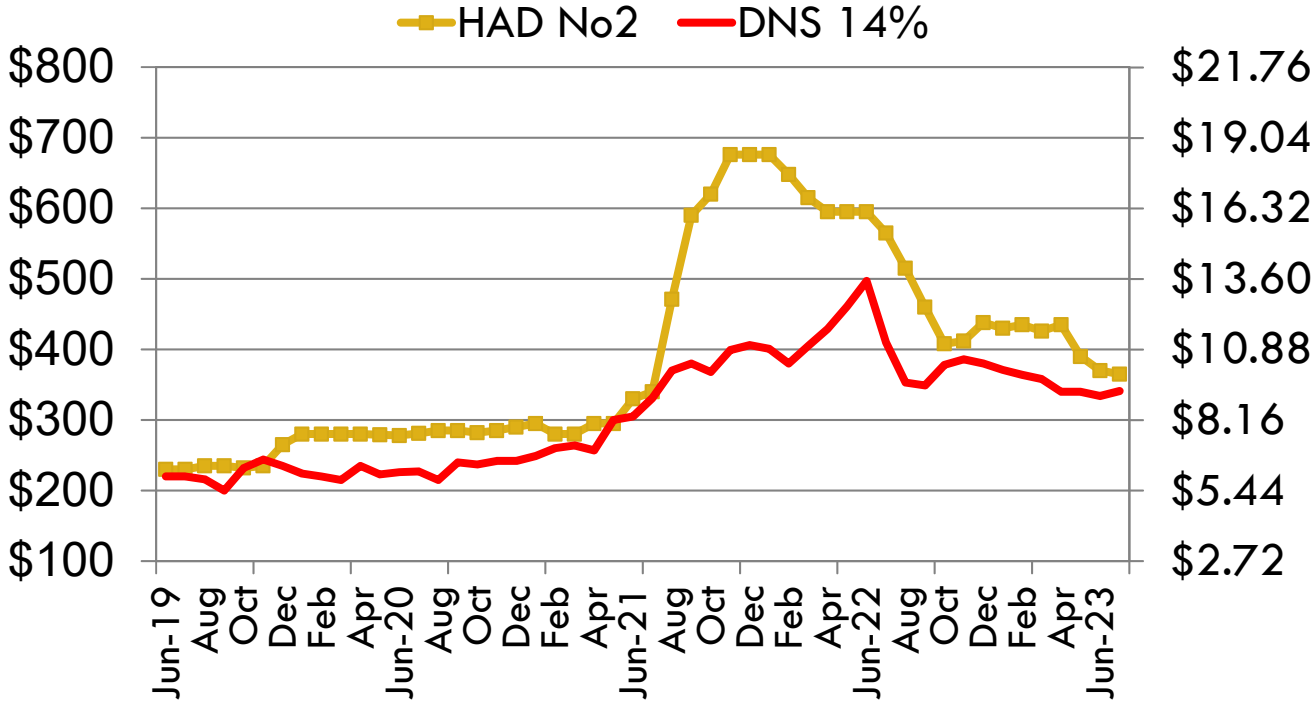


7/6/23

# PRICE TRENDS AT THE LAKES

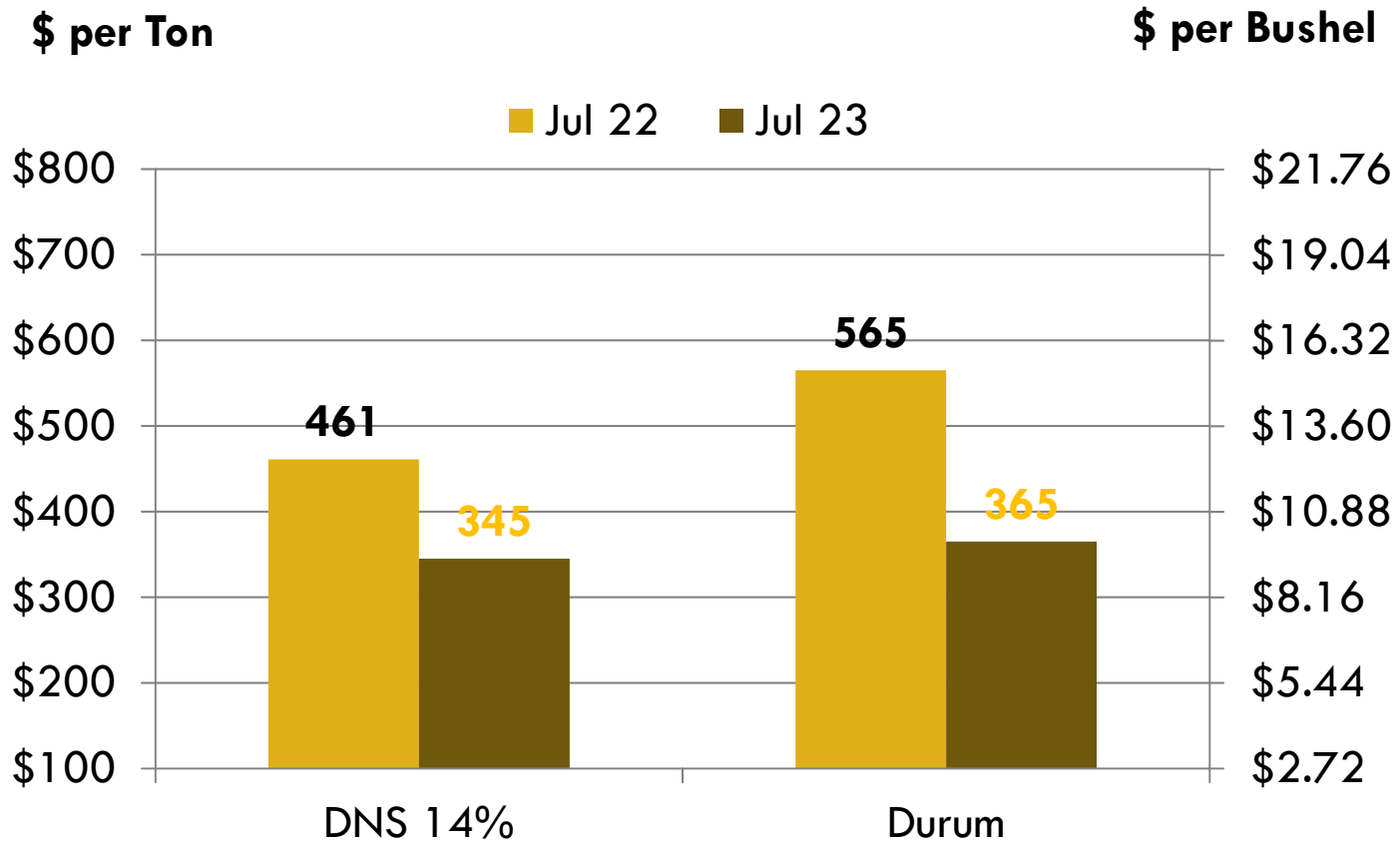
Per Metric Ton

Per Bushel



Source: USDA, Annual Price Summary  
7/12/23

# U.S. WHEAT PRICE CHANGE AT THE LAKES



7/6/23

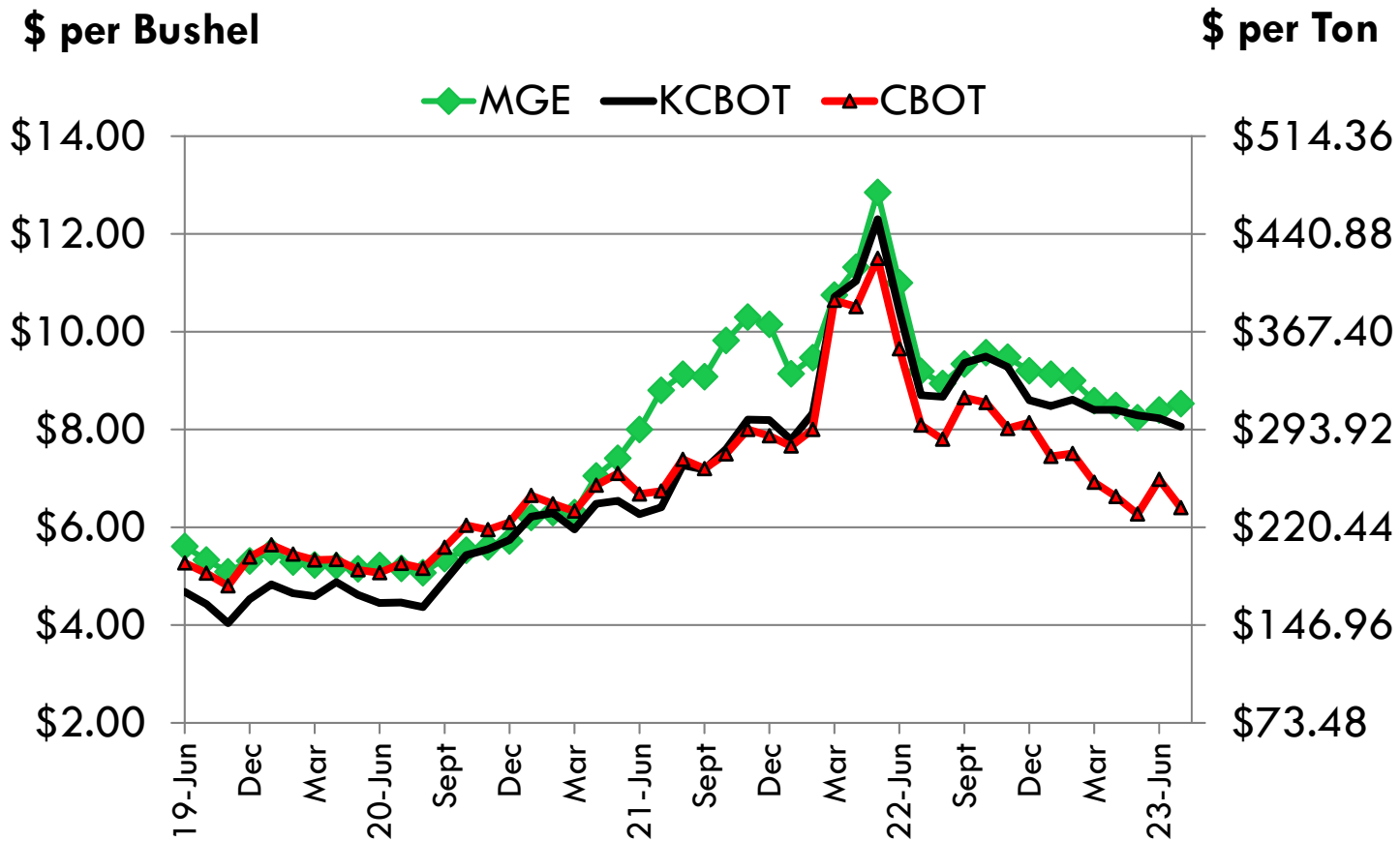


# U. S. FUTURES TRENDS

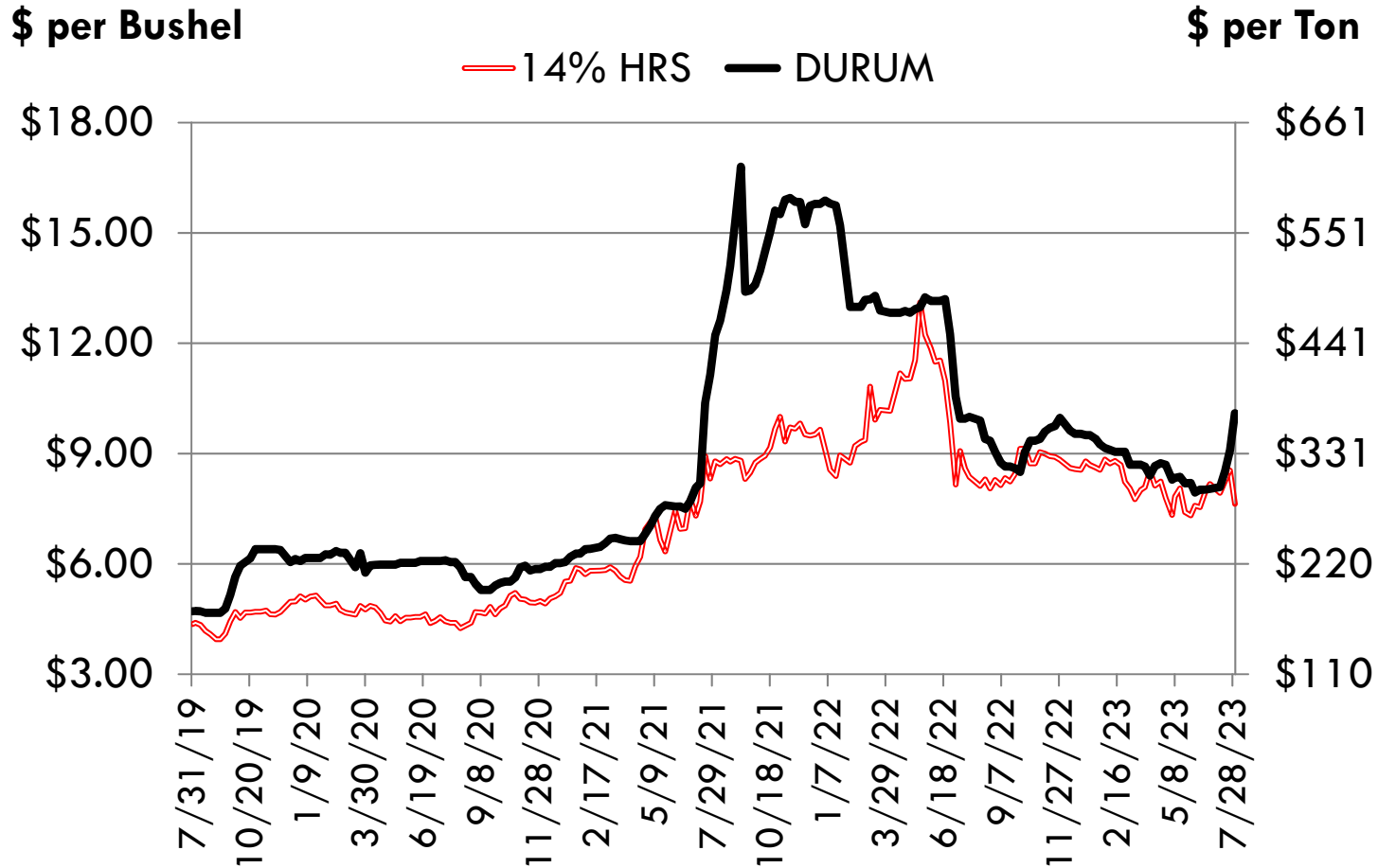
Minneapolis – Hard Red Spring

Kansas City – Hard Red Winter

Chicago – Soft Red Winter – World prices



# Average N.D. Hard Red Spring and Durum Wheat Producer Bids



Source: Elevator weekly prices 7/31/23