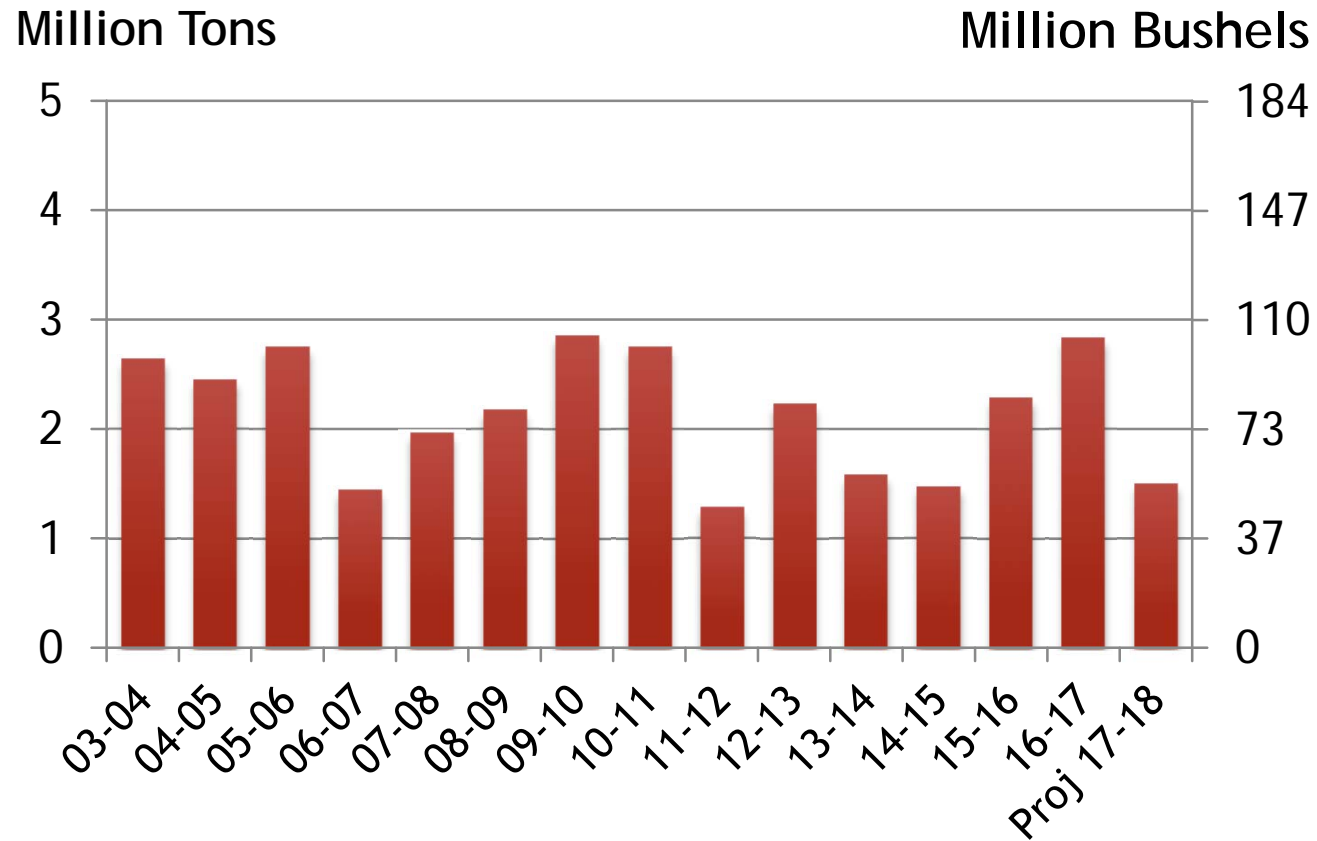
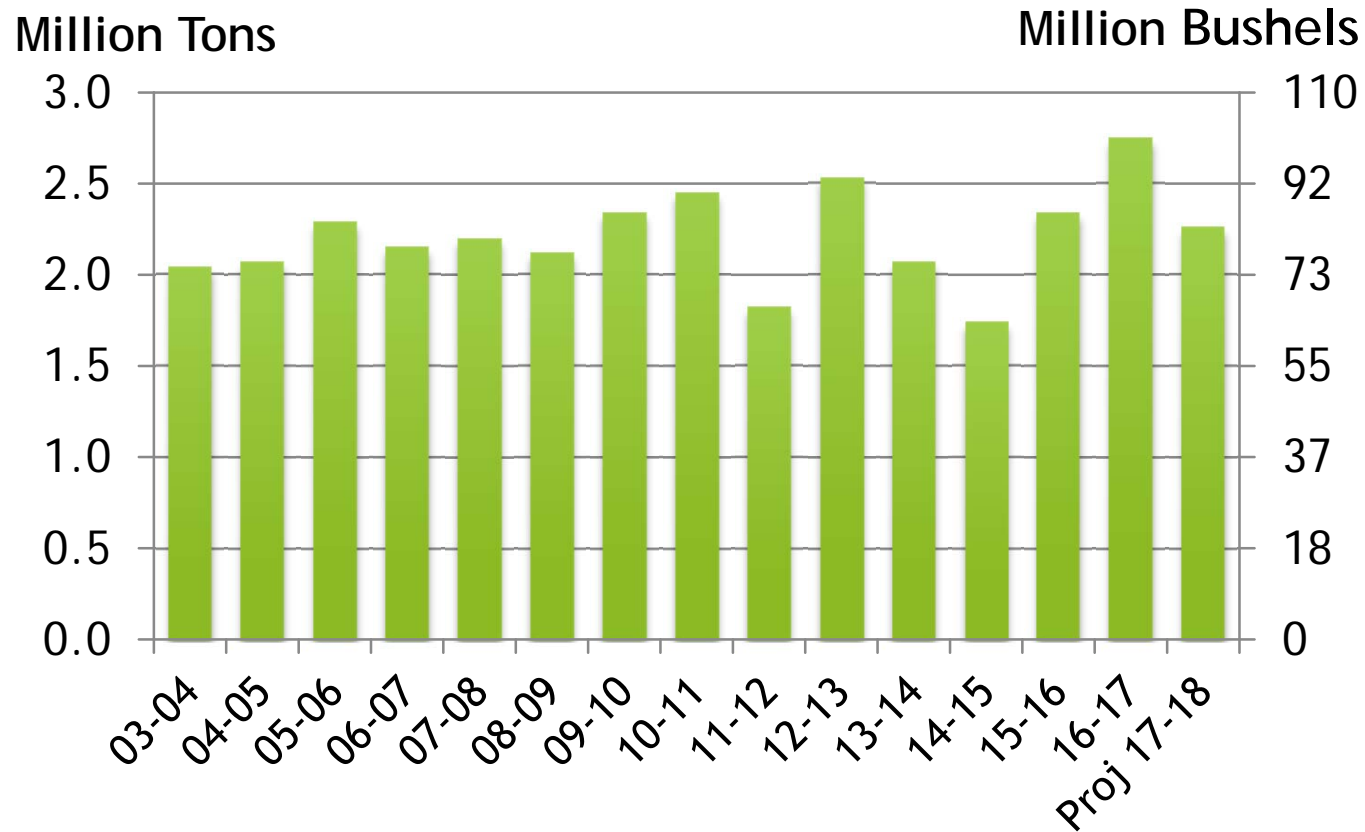


U.S. DURUM PRODUCTION



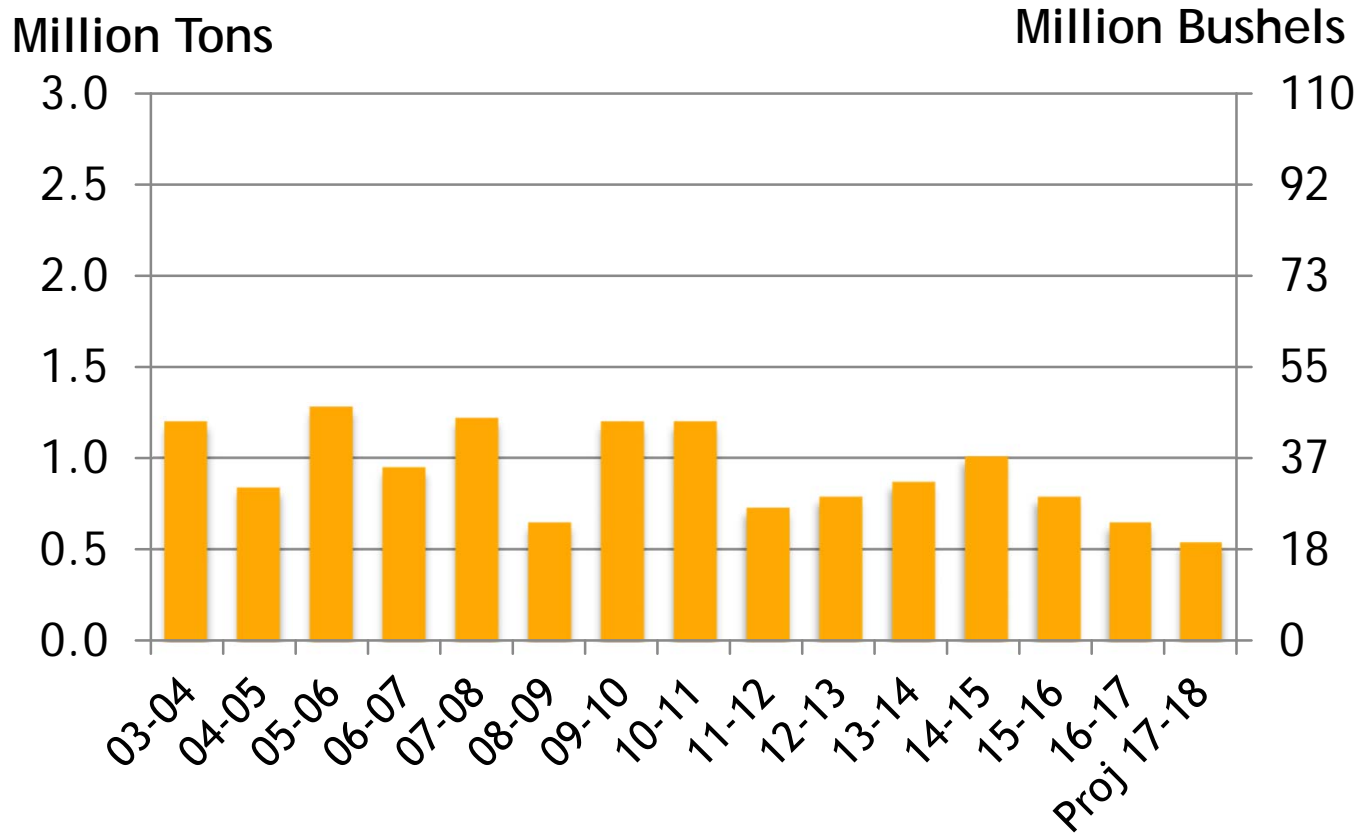
Source: USDA April 2018
Xldata/both/S&D prod, consump, carryover

U.S. DURUM DOMESTIC USE



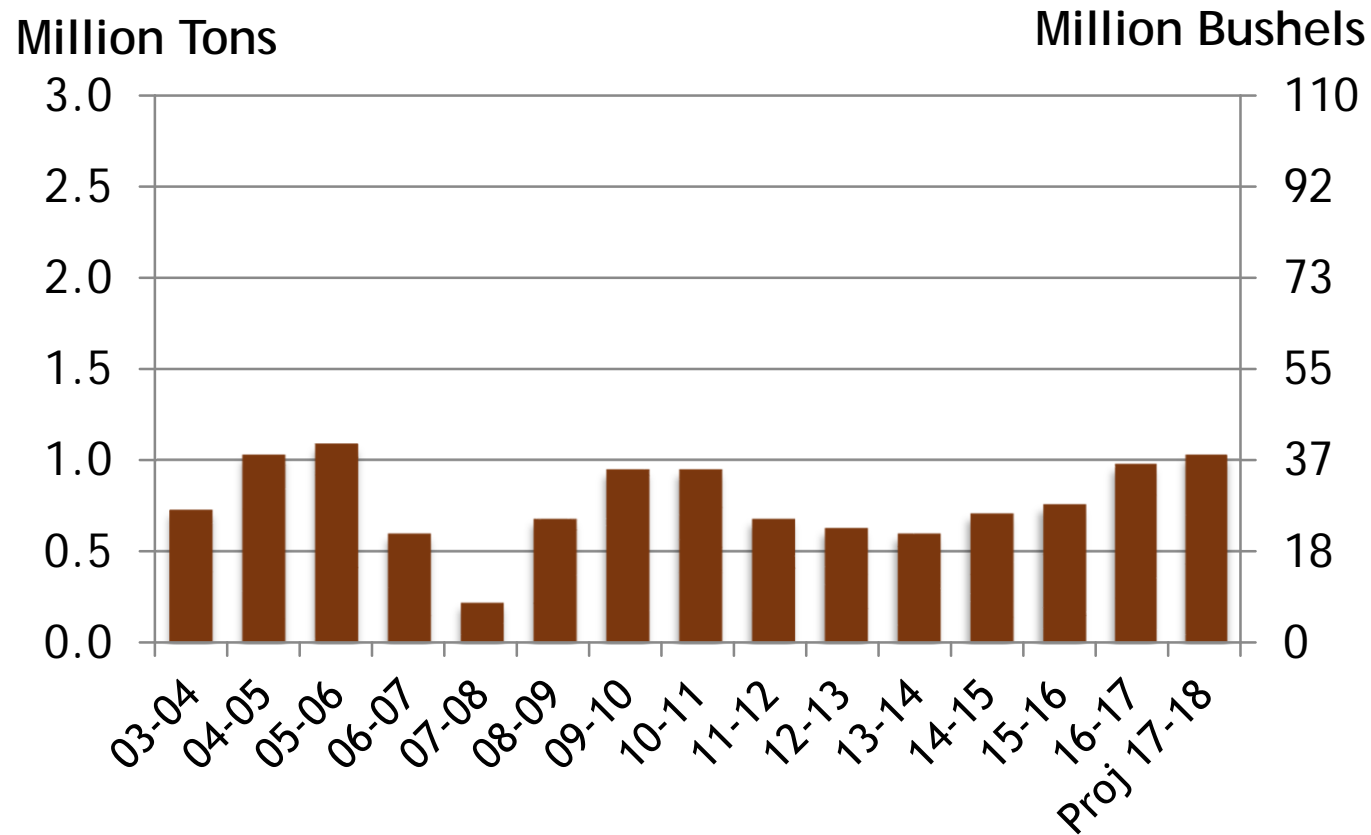
Source: USDA April 2018
Xldata/both/S&D prod, conump, carryover

U.S. DURUM EXPORTS



Source: USDA April 2018
Xldata/both/S&D prod, consump, carryover

U.S. DURUM STOCKS



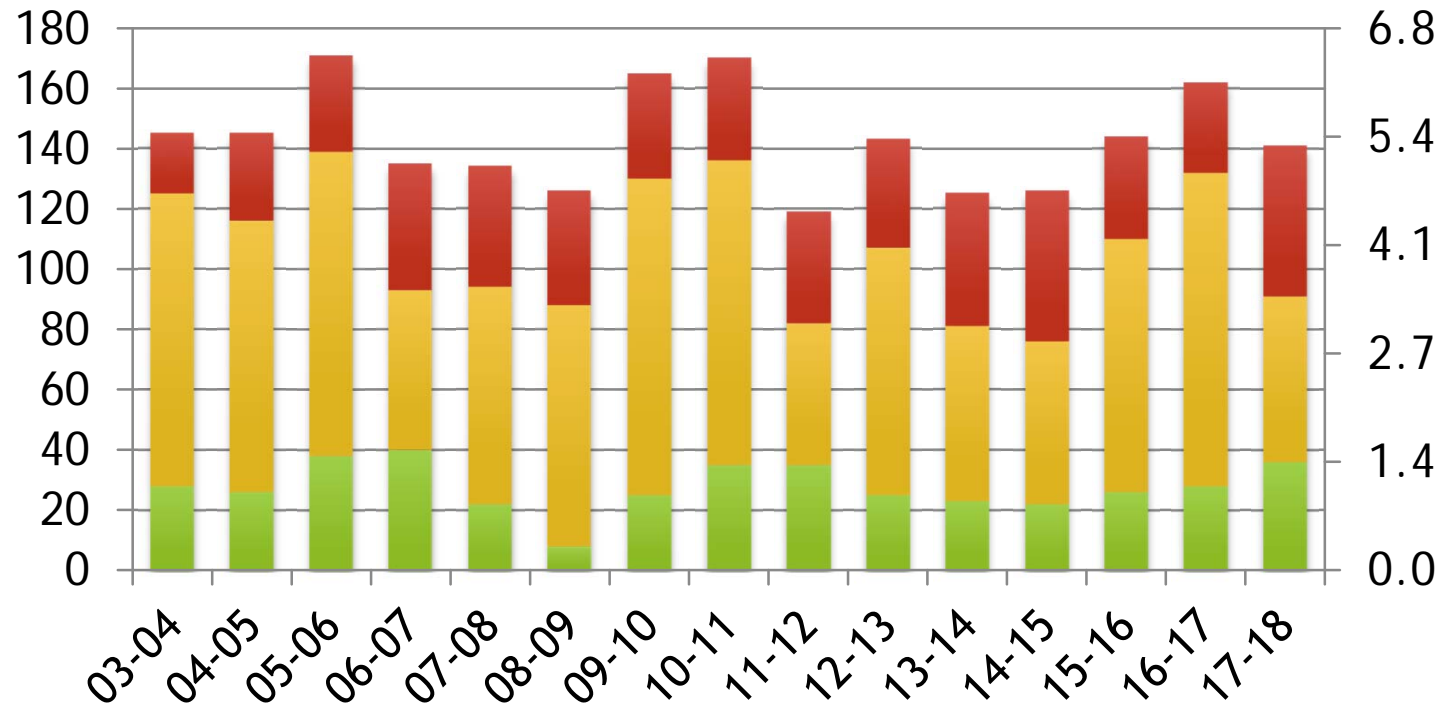
Source: USDA April 2018
 Xldata/both/S&D prod, consump, carryover

DURUM SUPPLIES IN THE U.S.

Million Bushels

Million Tons

■ Beg Stocks ■ Production ■ Imports



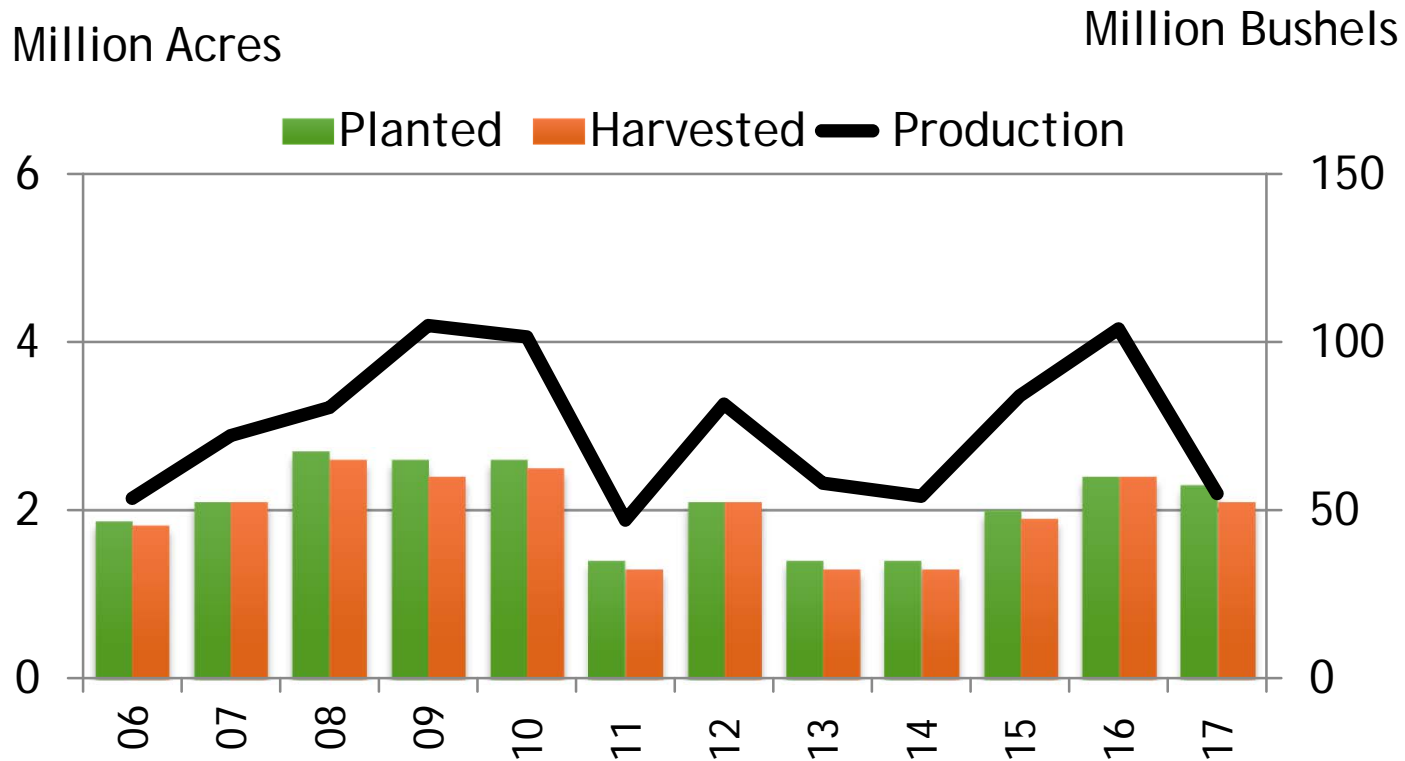
Source: USDA April 2018

U.S. DURUM WHEAT PRODUCTION

	Planted	Harvested	Yield	Production
2006	1.9	1.8	29.5	53.5
2007	2.1	2.1	34.1	72.2
2008	2.7	2.6	31.3	80.5
2009	2.6	2.4	44.0	104.9
2010	2.6	2.5	41.2	101.5
2011	1.4	1.3	36.8	47.0
2012	2.1	2.1	38.4	81.5
2013	1.4	1.3	43.3	58.0
2014	1.4	1.3	40.2	54.1
2015	2.0	1.9	44.0	84.0
2016	2.4	2.4	44.0	103.9
2017	2.3	2.1	25.7	54.9
5 Yr Avg	1.8	1.8	42.0	76.3
10 Yr Avg	2.1	2.0	39.7	78.8

Acres-Bushels

U.S. DURUM WHEAT PLANTINGS & PRODUCTION



Source: USDA Nov 2017
Xldata/durum/acres

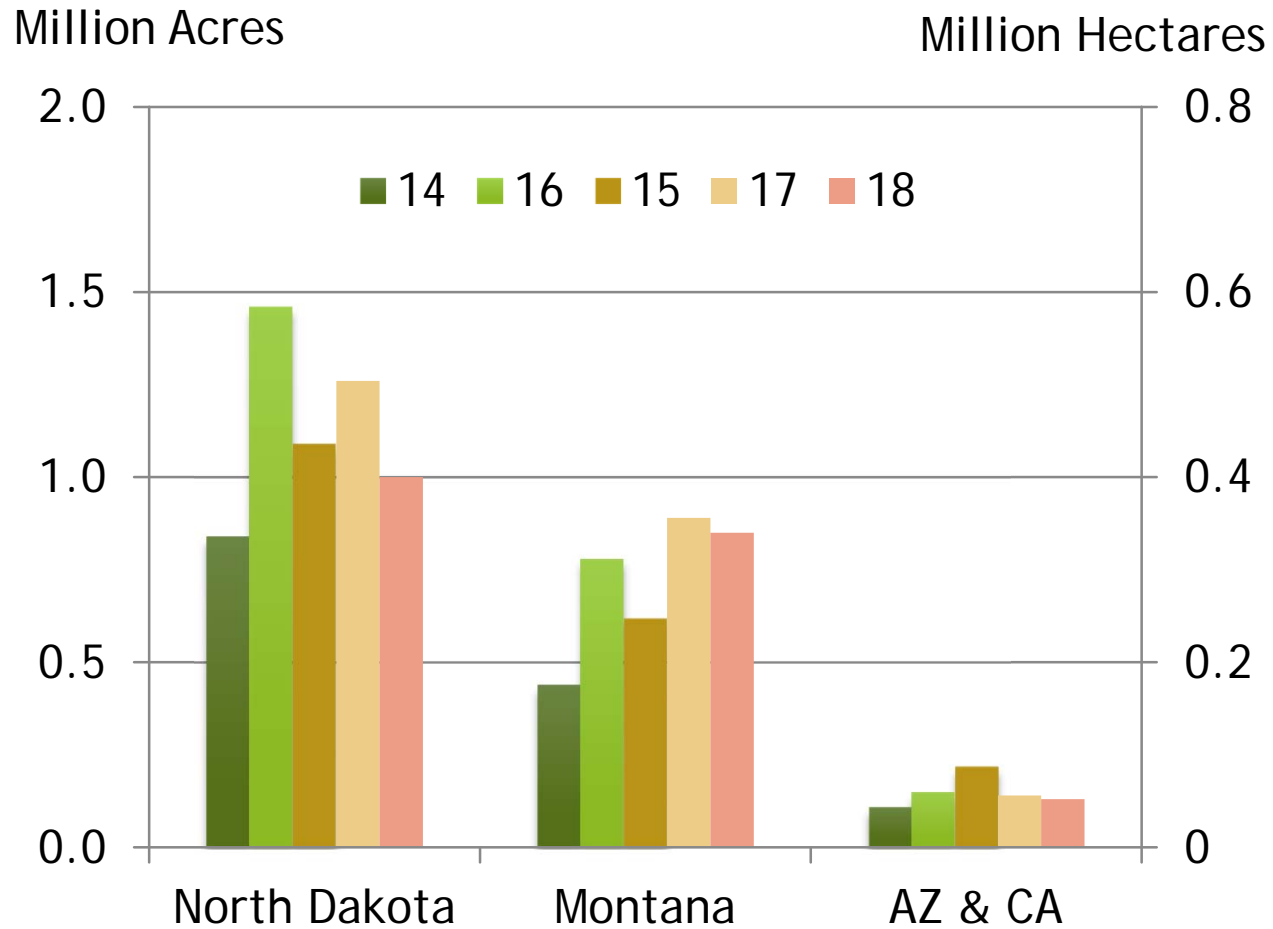
U.S. DURUM SUPPLY & DEMAND

Million Bushels

	12-13	13-14	14-15	15-16	16-17	Proj 17-18	Change
Beg Stocks	25	23	22	26	28	36	+29%
Production	82	58	54	84	104	55	-47%
Imports	36	44	50	34	30	50	+67%
Tot Supply	143	125	126	144	162	141	-13%
Dom Use	93	76	64	86	101	83	-18%
Exports	29	32	37	30	24	20	-17%
Tot Use	122	108	101	116	126	103	-18%
End Stocks	23	22	26	28	36	38	+6%
S/U Ratio	19%	20%	26%	24%	29%	37%	

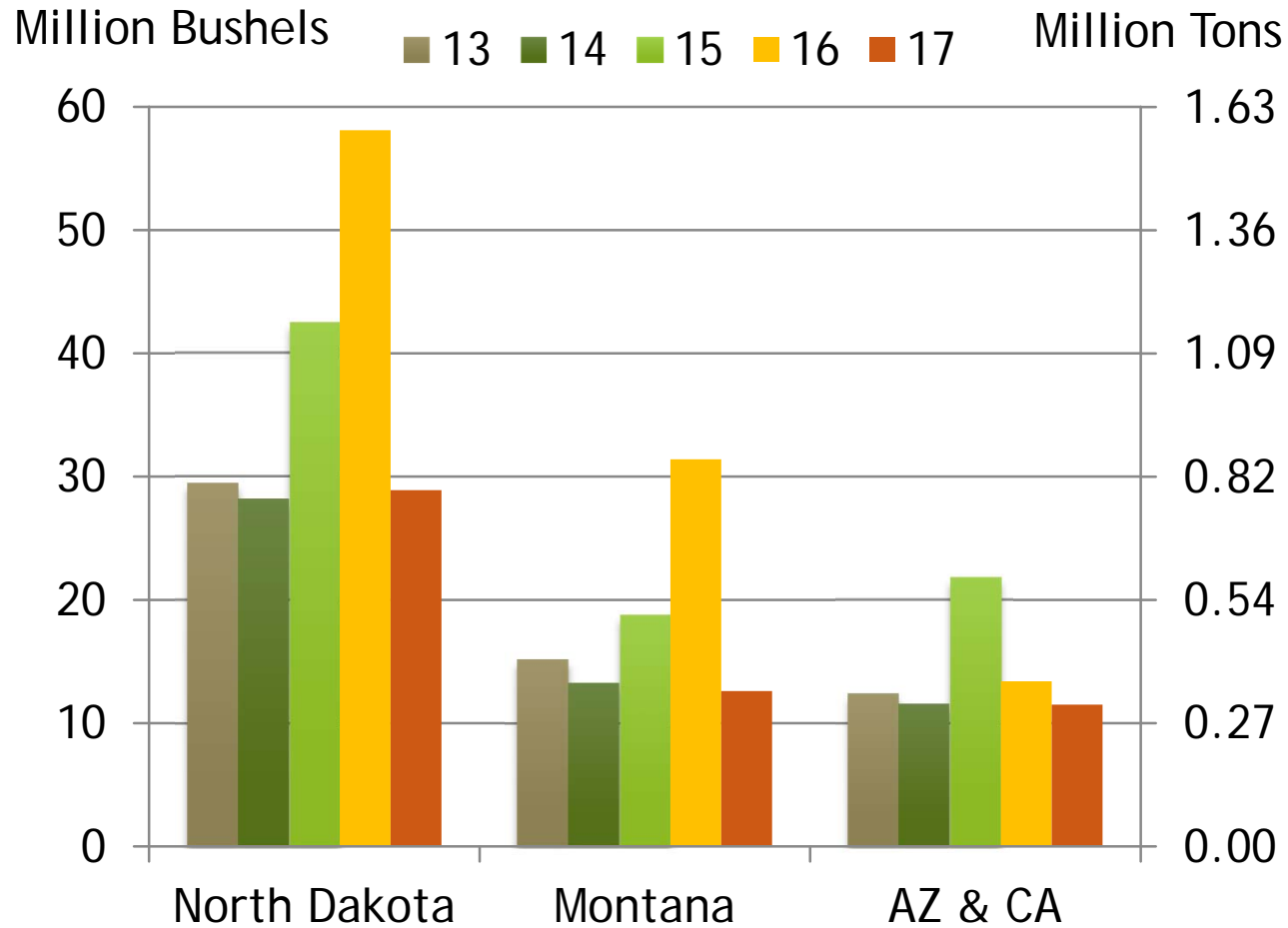
Source: USDA April 2018
Xldata/durum/S&D

U.S. DURUM WHEAT PLANTINGS BY STATE



Source: USDA Prospective Plantings

U.S. DURUM WHEAT PRODUCTION BY STATE

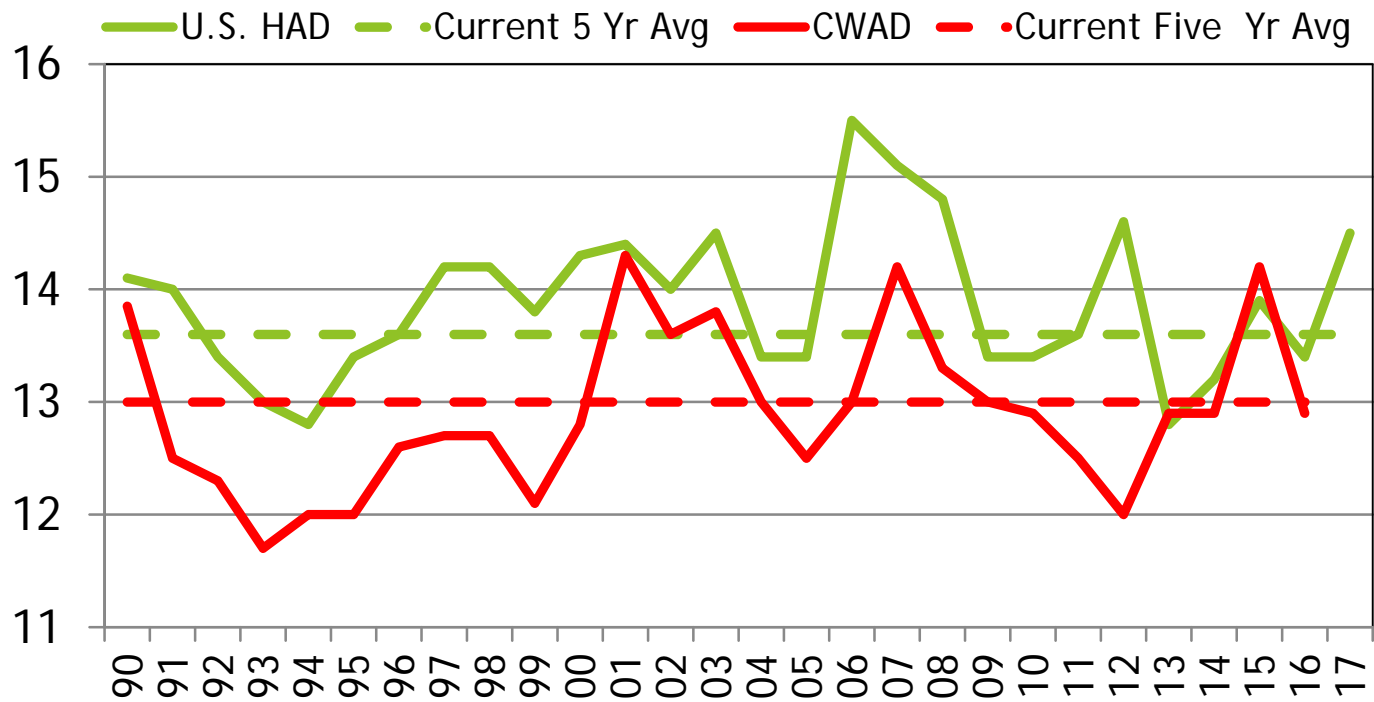


Source: USDA Small Grains Summary

COMPARATIVE U.S. WHEAT PROTEIN

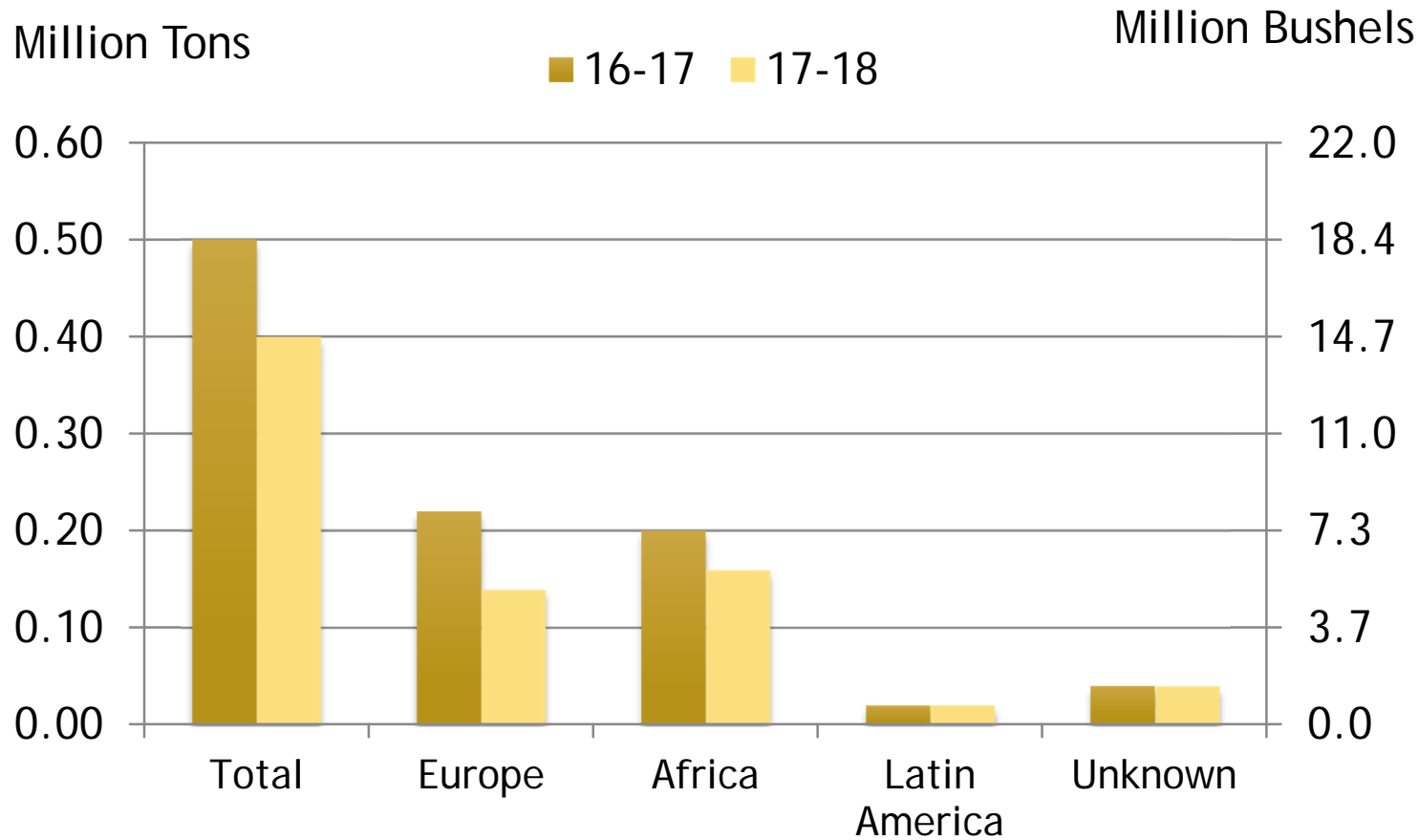
12% Moisture Basis

Protein Content

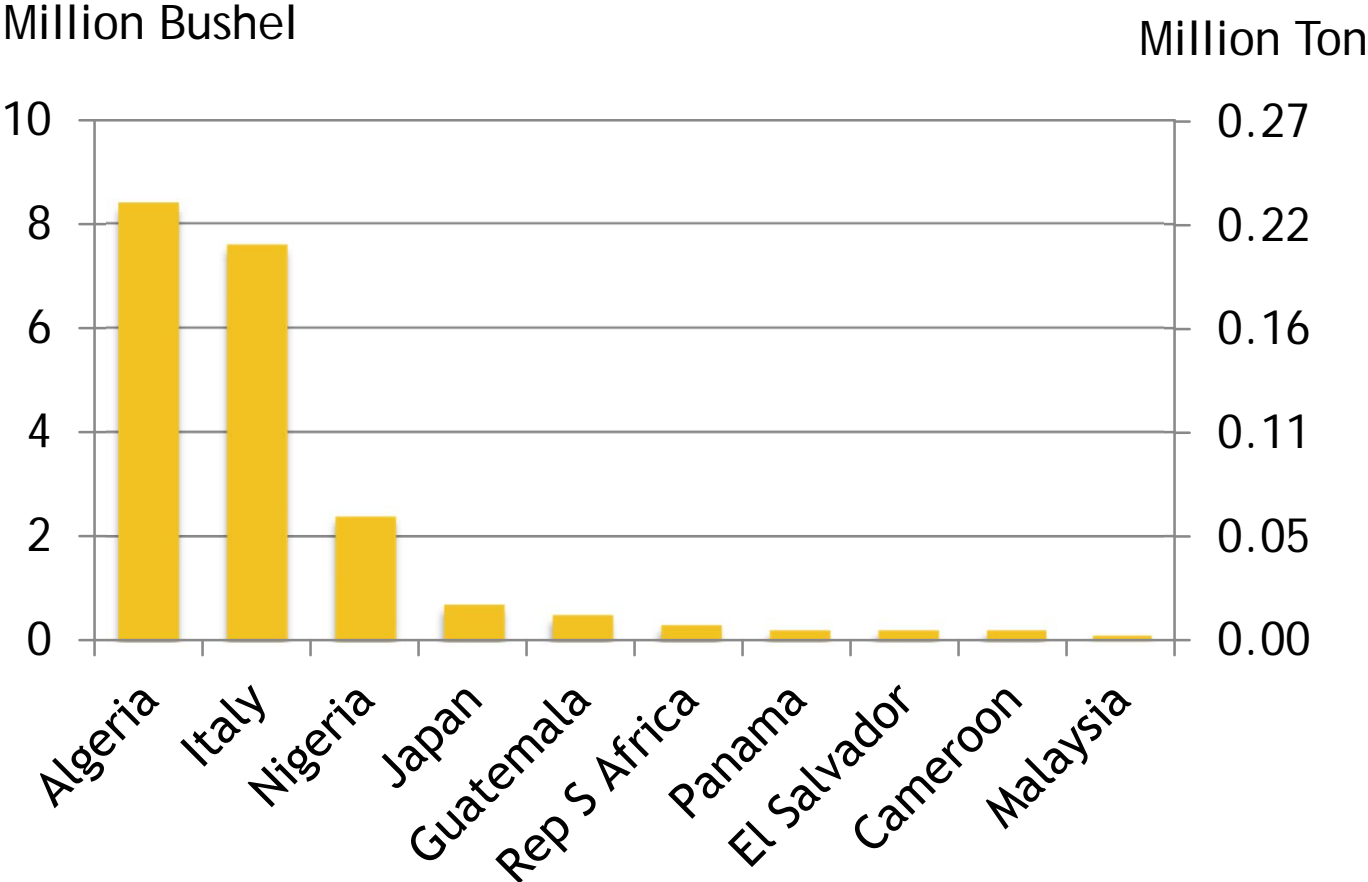


EXPORT PACE - U.S. DURUM WHEAT

as of April 5, 2018



TOP IMPORTERS OF U.S. DURUM IN MARKETING YEAR 2016-17



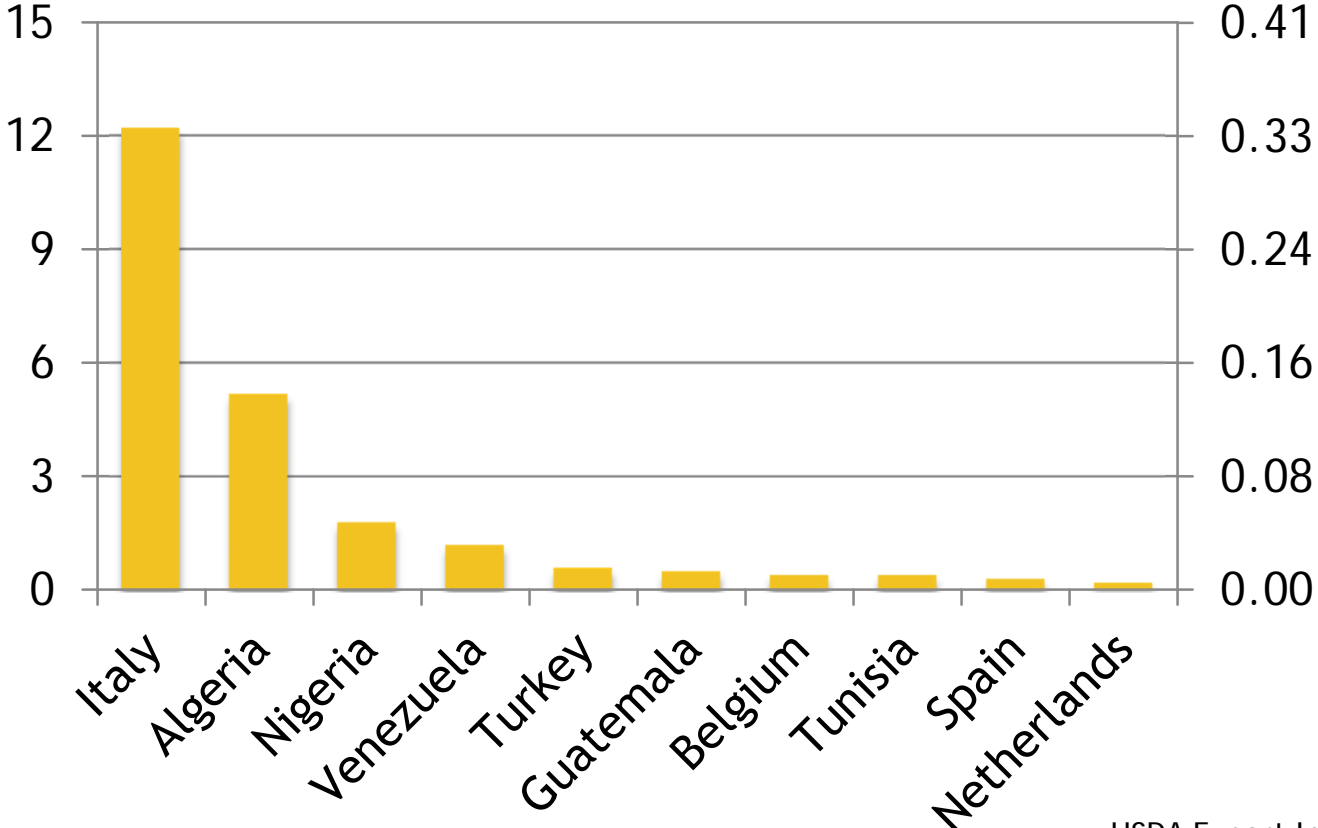
USDA Export Inspections
Xldata/Both/Exports/Top 10 & 5 yr avg

TOP IMPORTERS OF U.S. DURUM

FIVE-YEAR AVERAGE (2012/13 - 2016/17)

Million Bushel

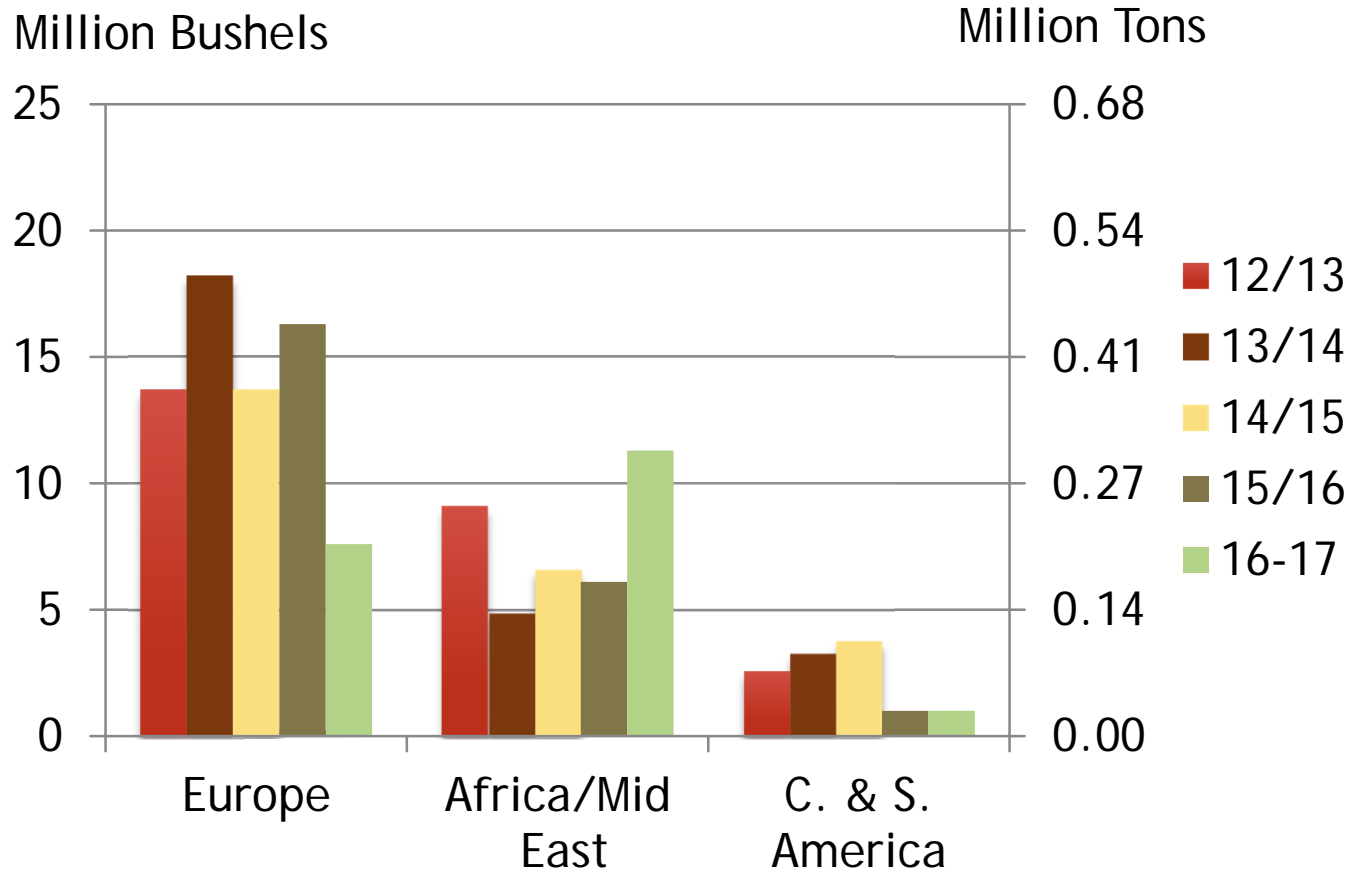
Million Ton



USDA Export Inspections
 Xldata/Both/Exports/Top 10 & 5 yr avg

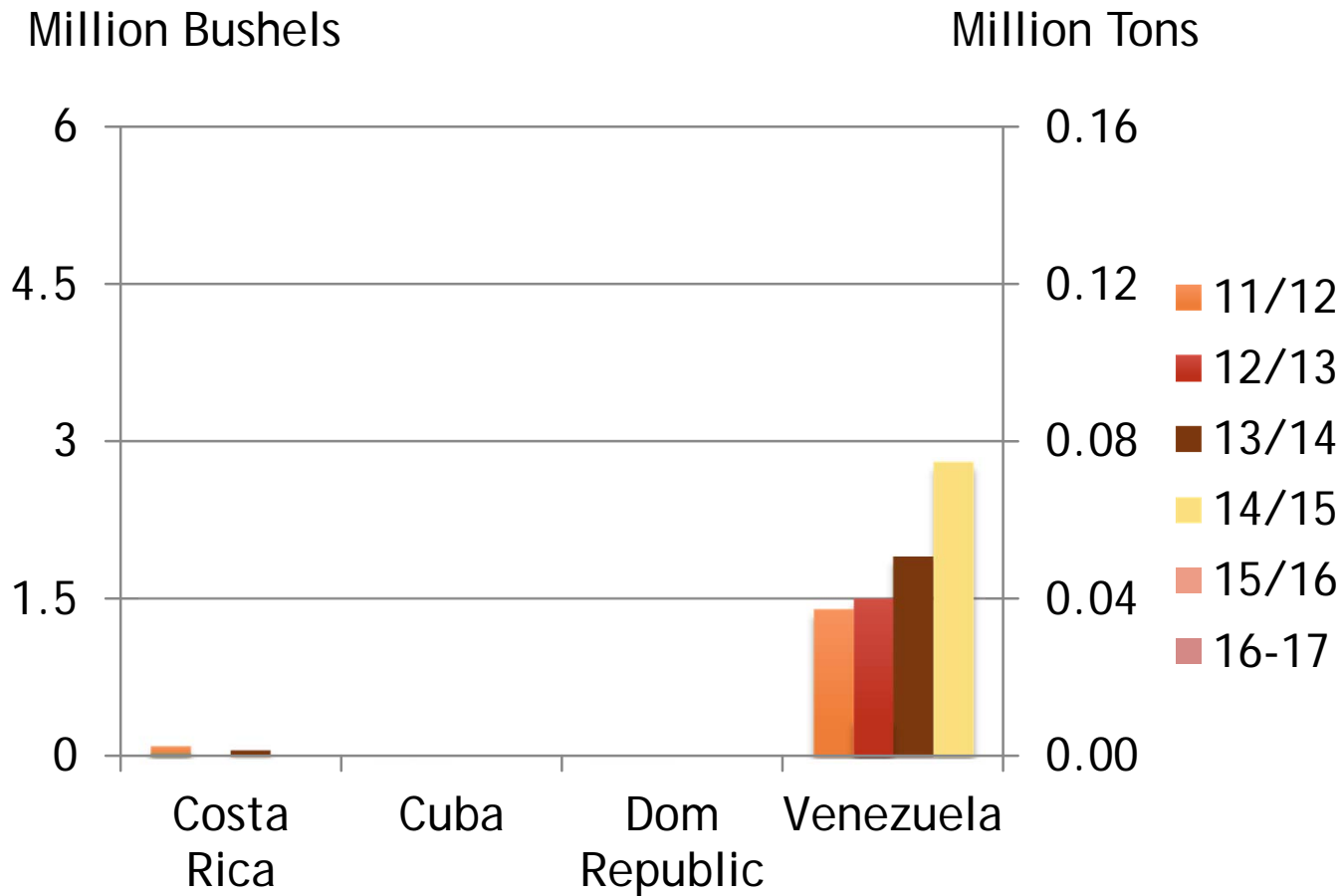
EXPORT TRENDS - BY REGION

U.S. Durum Wheat



EXPORT TRENDS - LATIN AMERICA

U.S. Durum Wheat



EXPORT TRENDS - N AFRICA /EU

U.S. Durum Wheat

