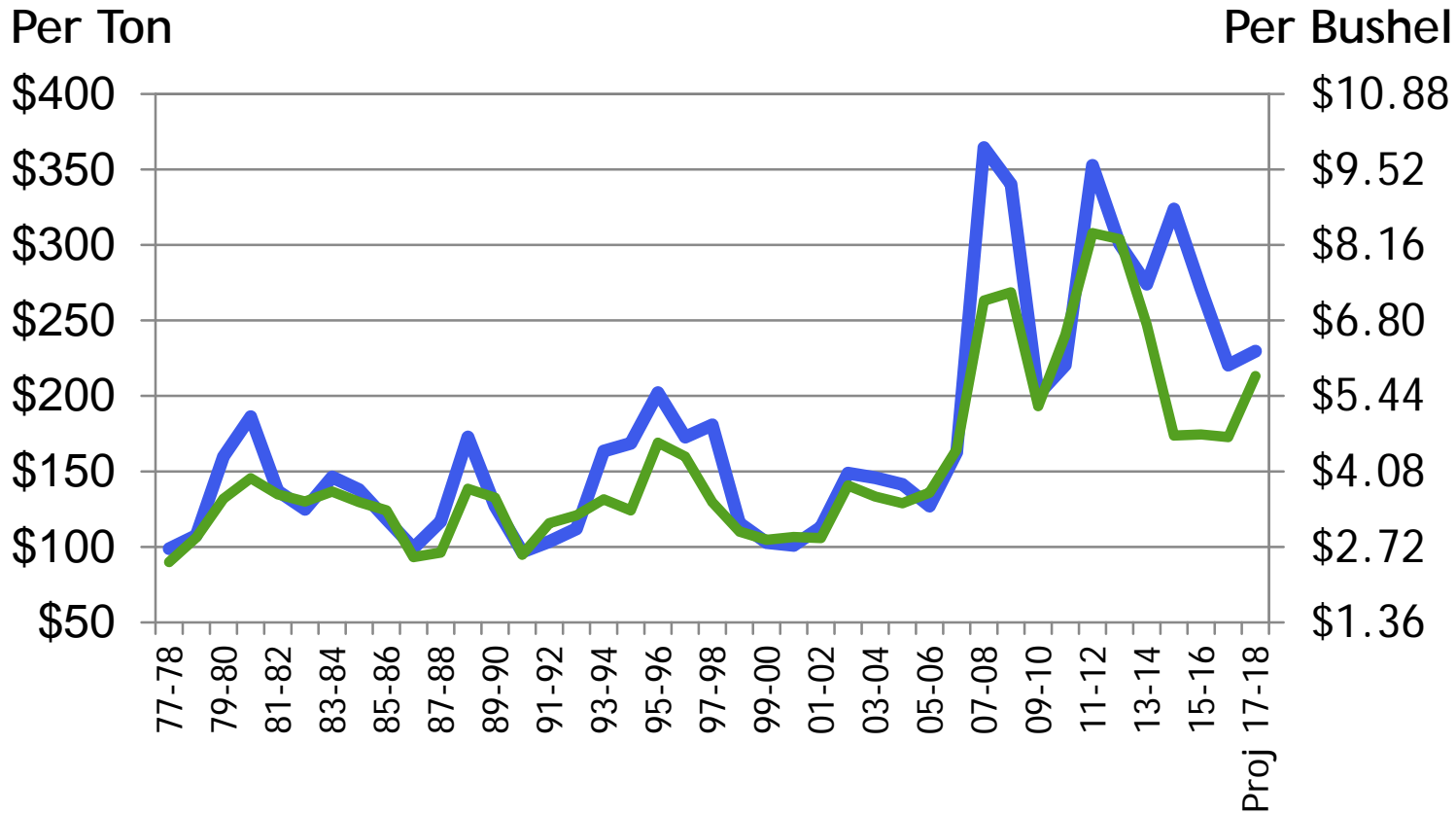


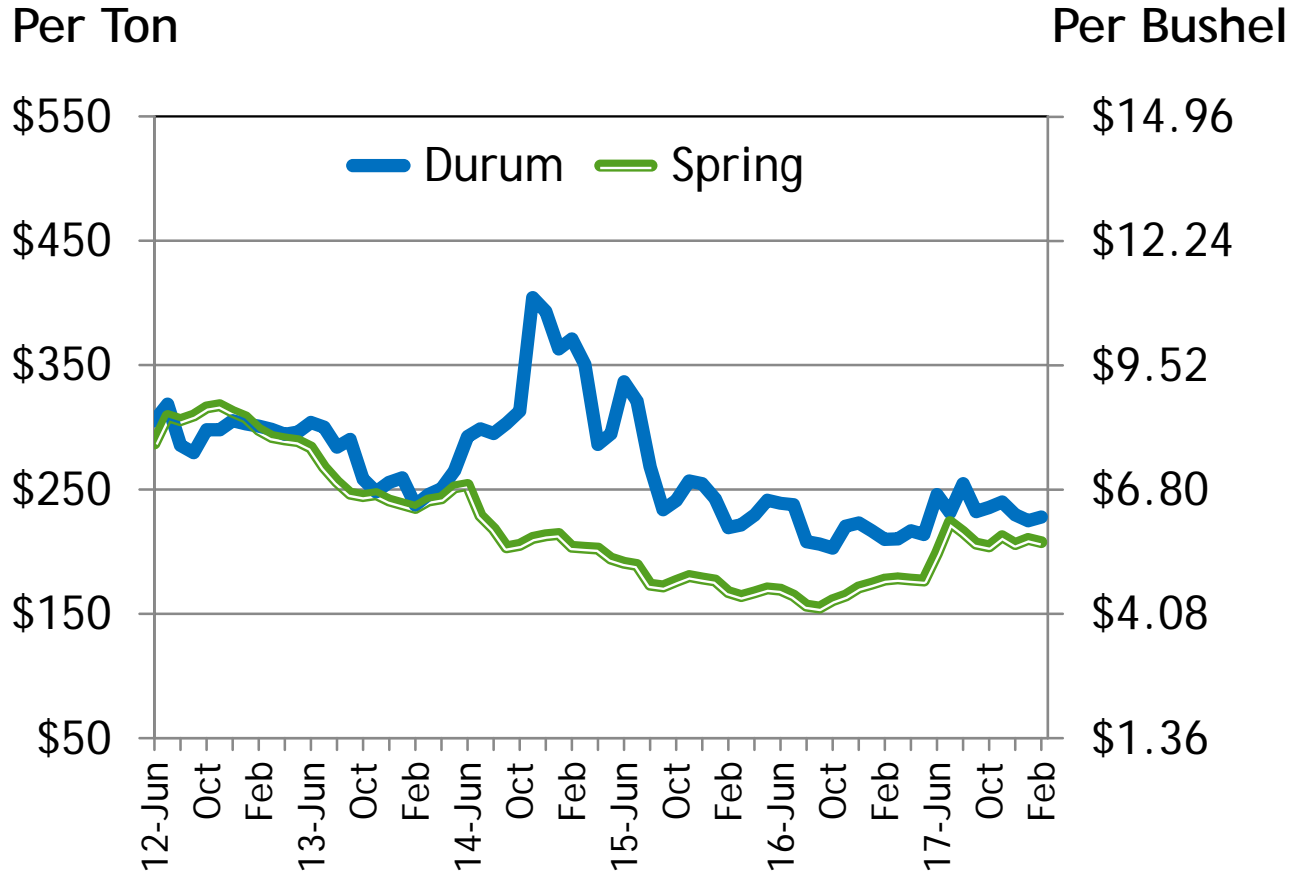
# U.S. AVERAGE FARM PRICES (Long Term)



— Durum — HRS

Source: USDA, Annual Price Summary  
4/10/18

# U.S. AVERAGE FARM PRICES



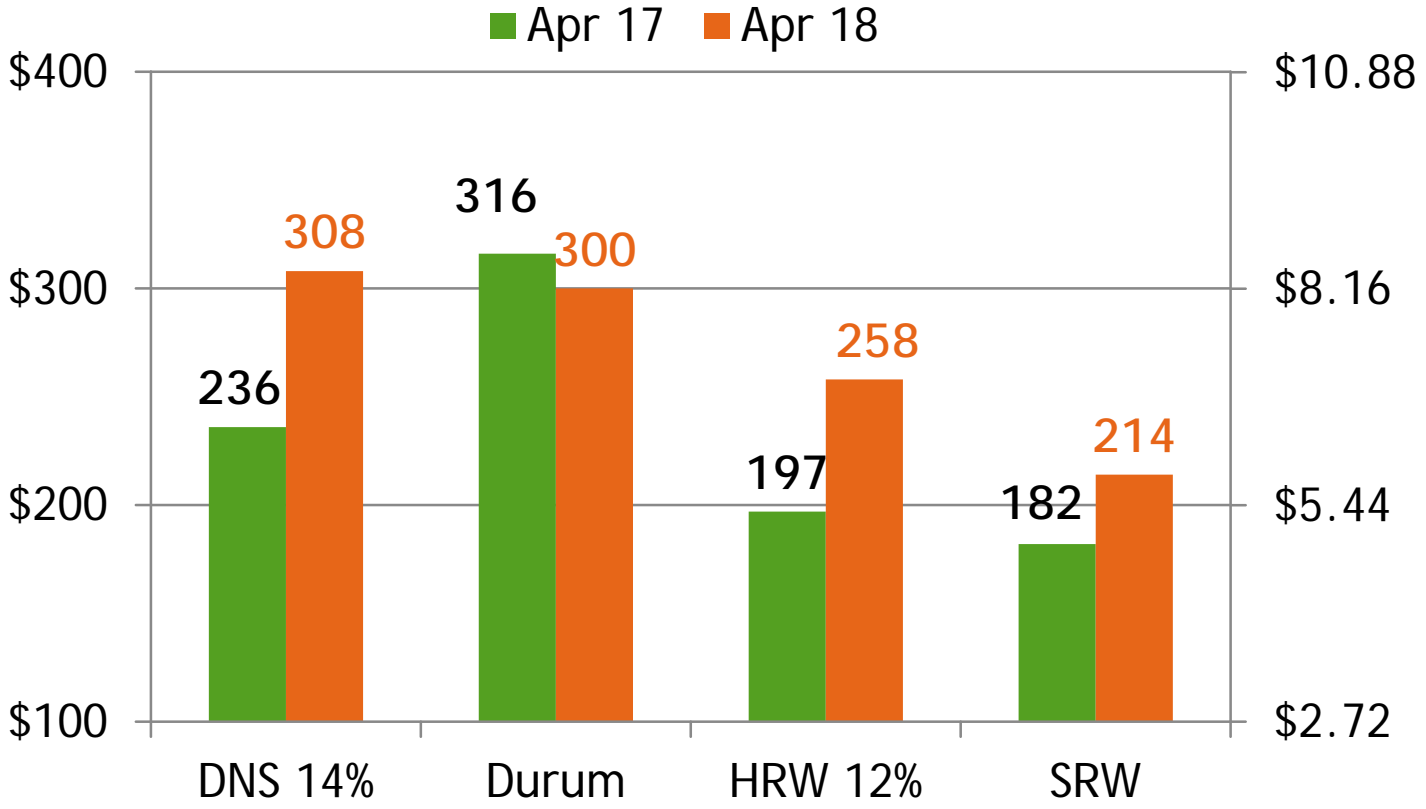
Source: USDA, Annual Price Summary  
3/28/18



# U.S. WHEAT PRICE CHANGE AT THE GULF

\$ per Ton

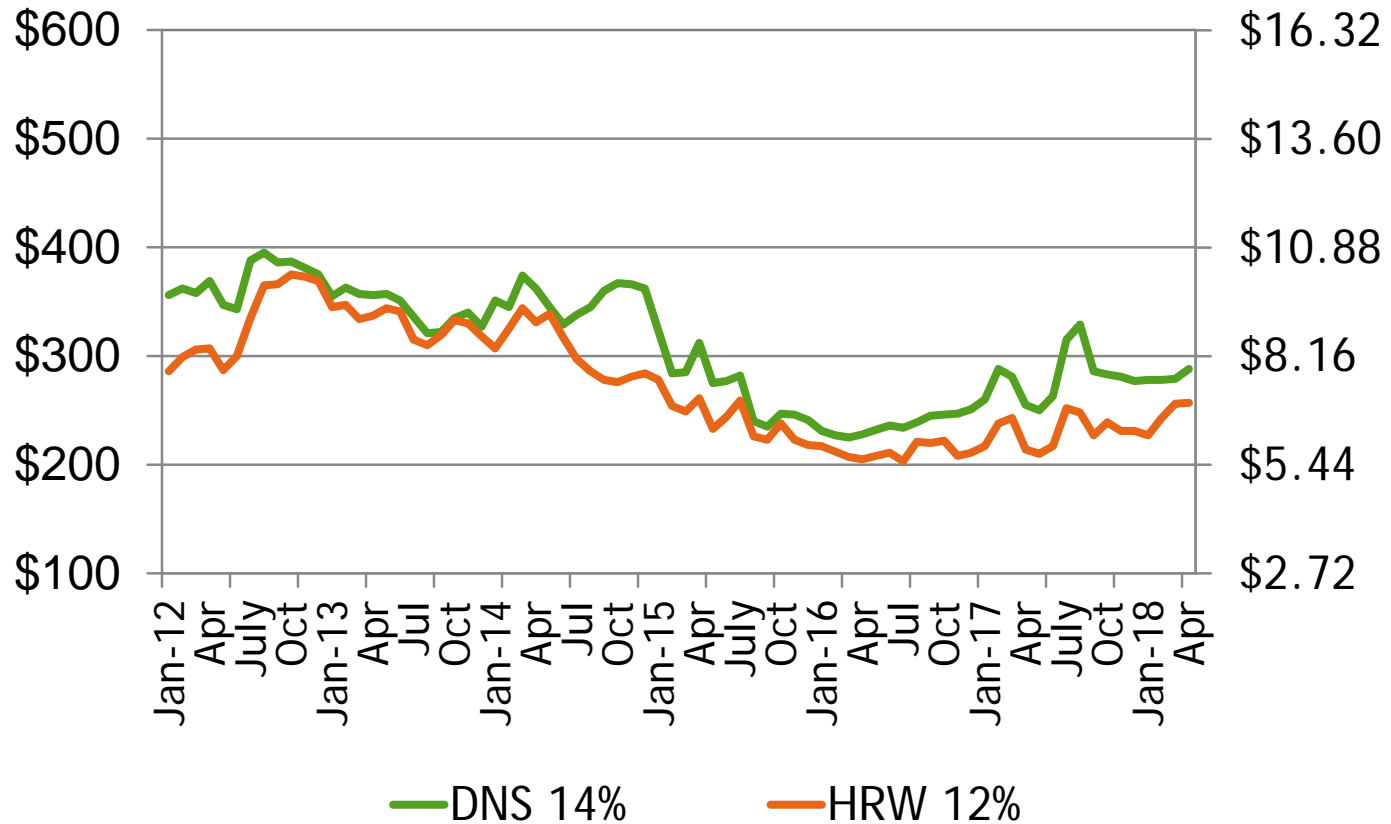
\$ per Bushel



# PRICE TRENDS AT THE PNW

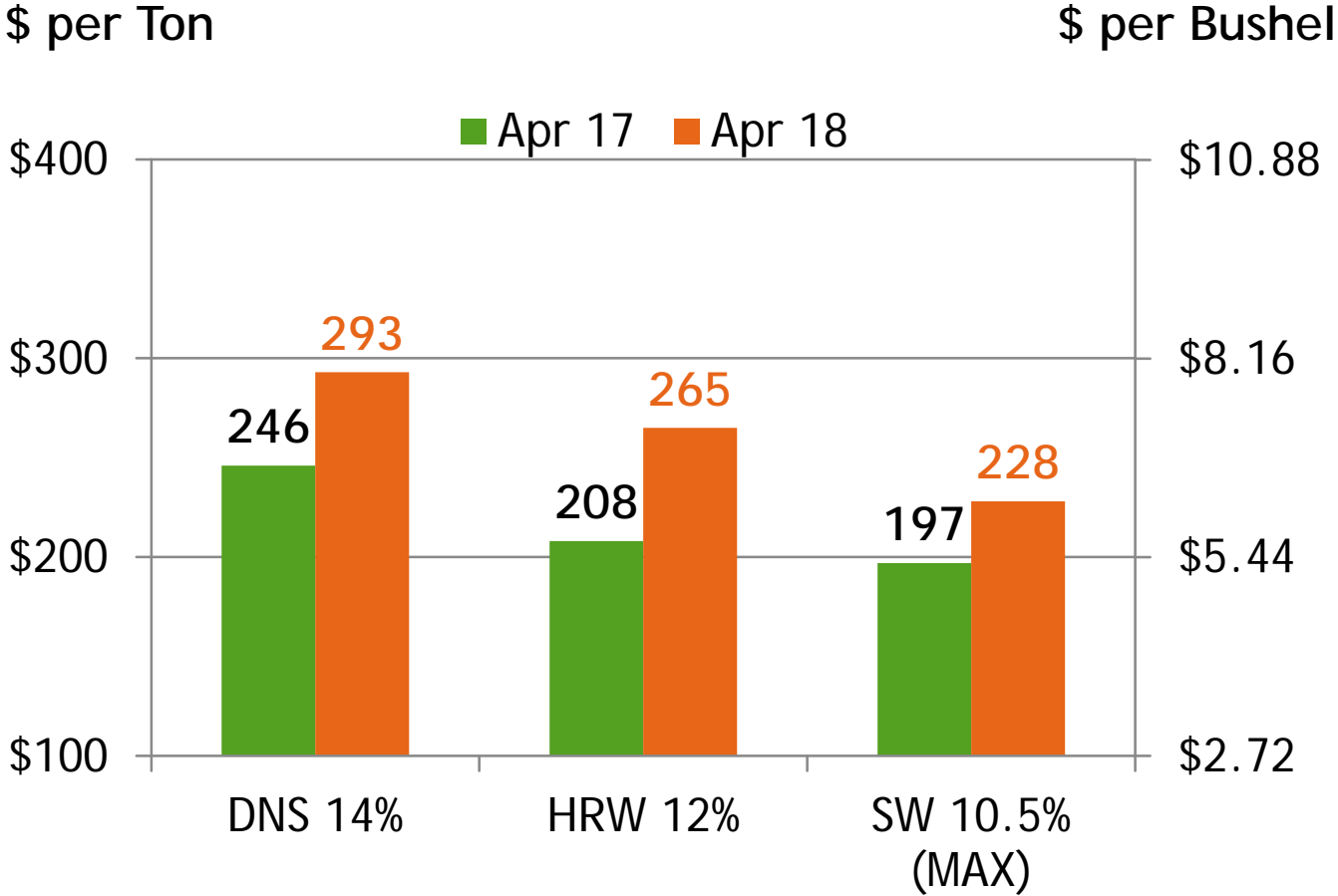
Per Metric Ton

Per Bushel



Source: USDA, Annual Price Summary  
4/10/18

# U.S. WHEAT PRICE CHANGE AT THE PNW

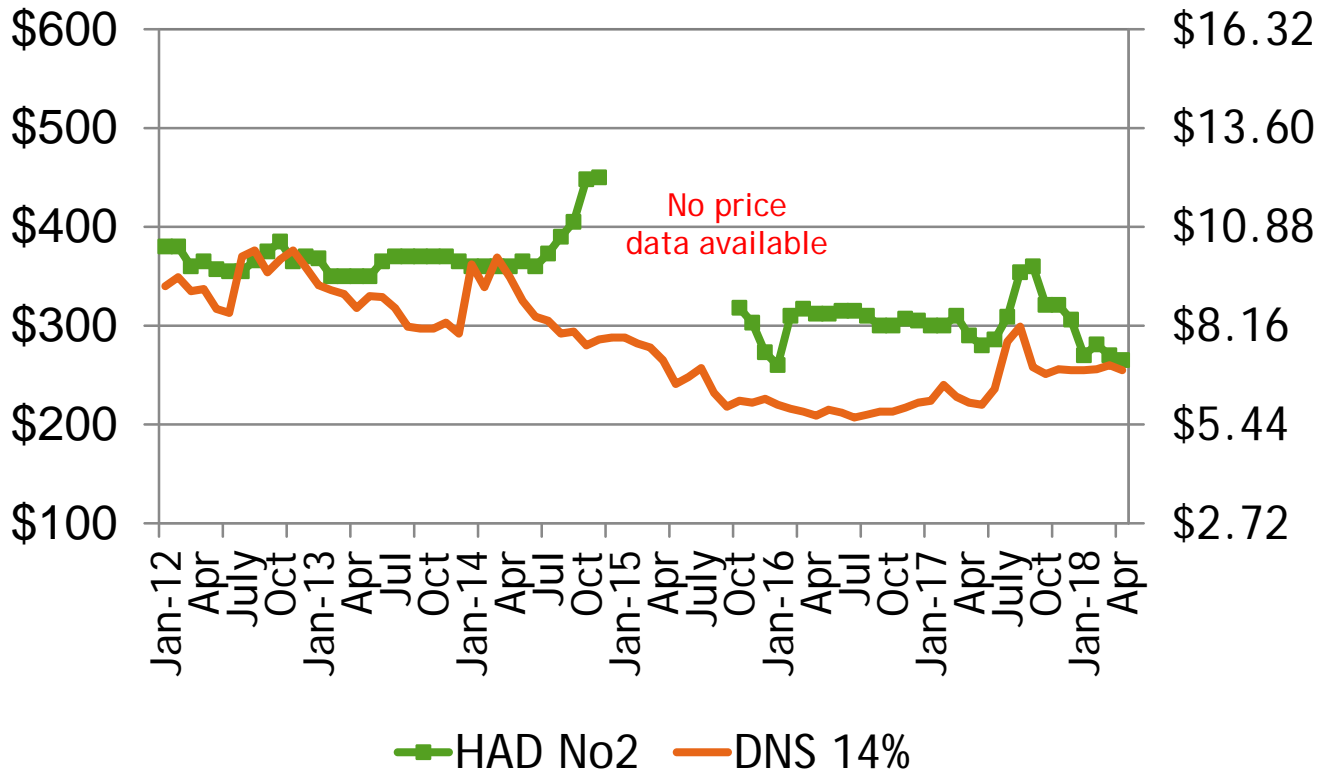


4/6/18

# PRICE TRENDS AT THE LAKES

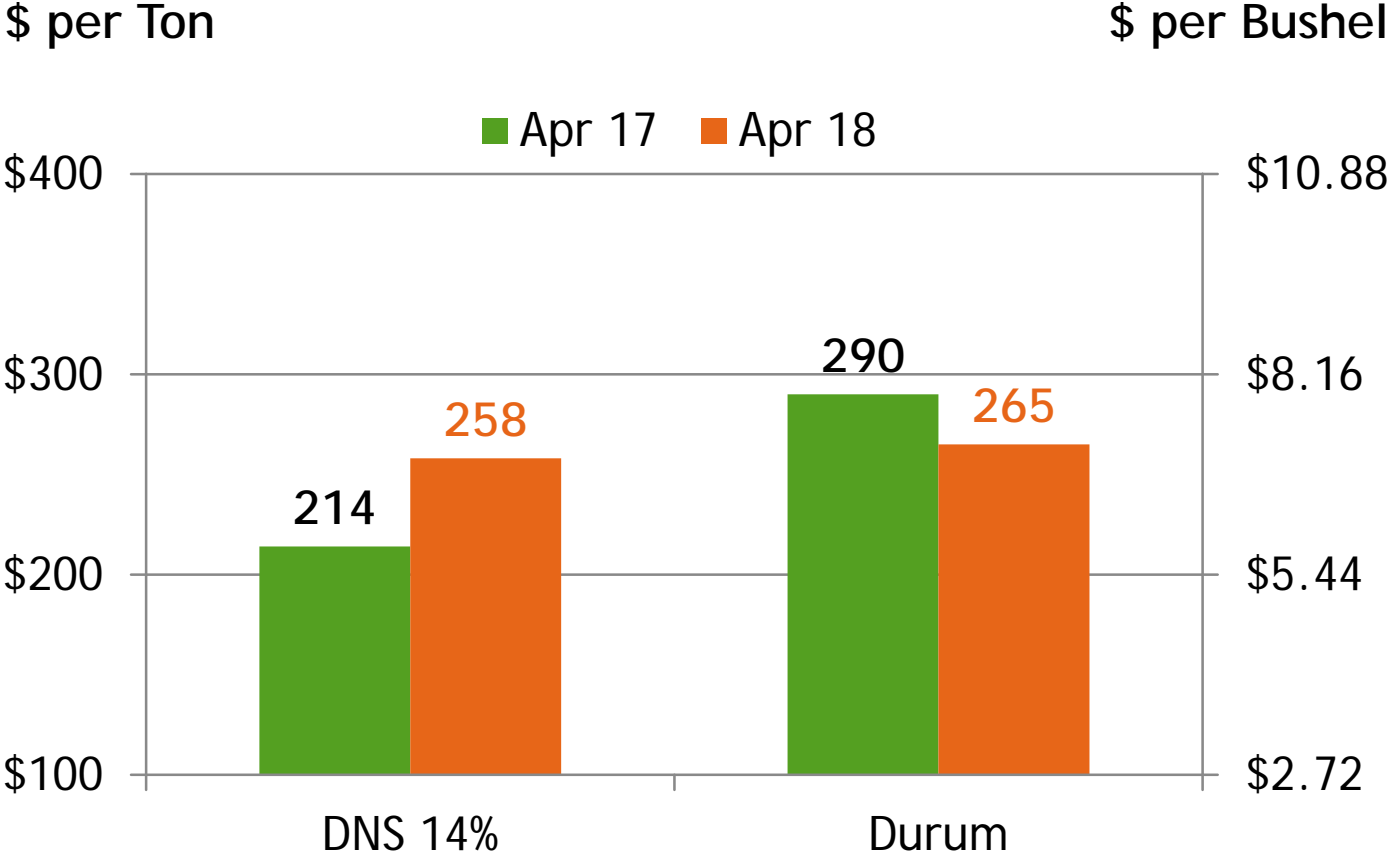
Per Metric Ton

Per Bushel



Source: USDA, Annual Price Summary  
4/10/18

# U.S. WHEAT PRICE CHANGE AT THE LAKES



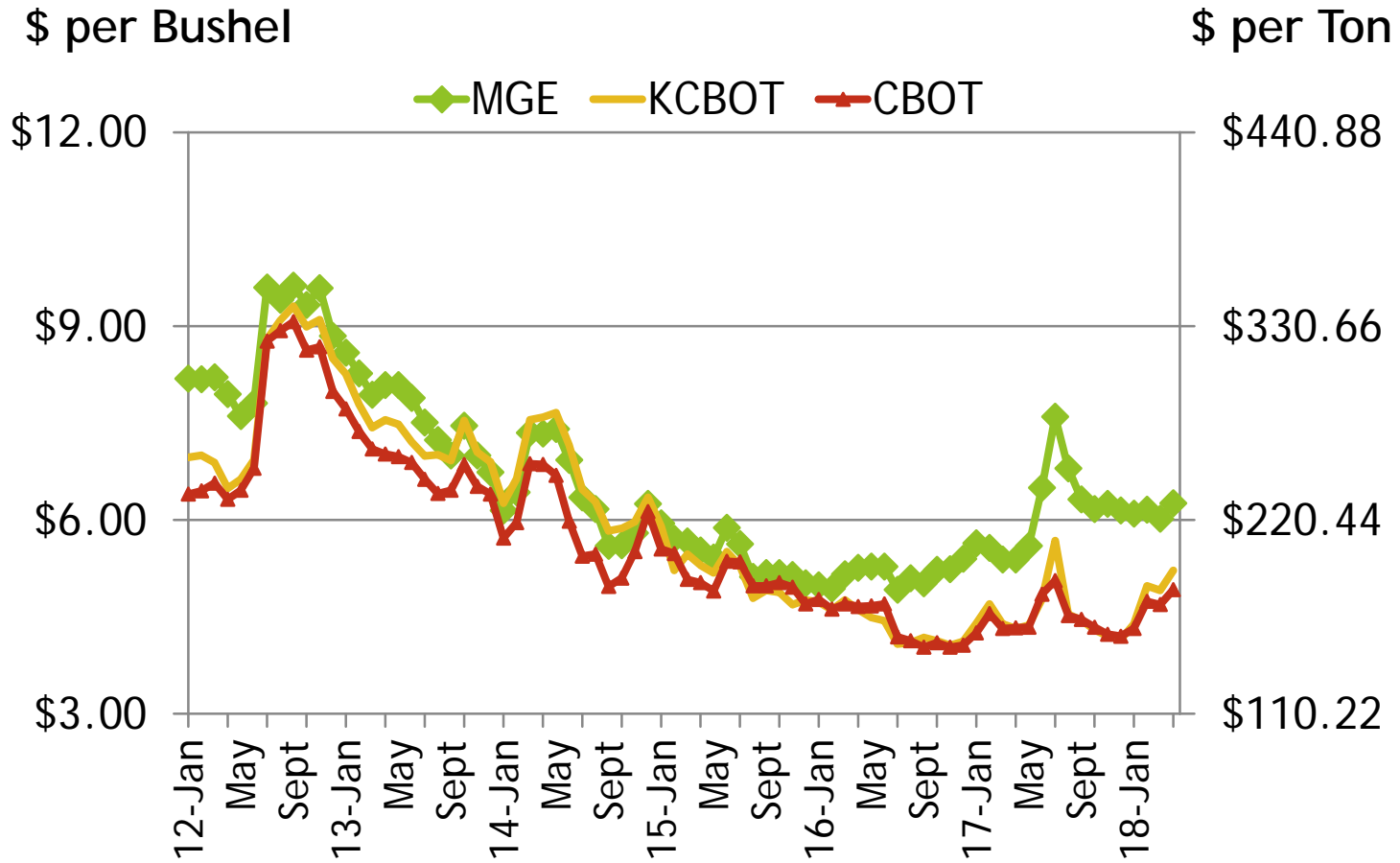


# U. S. FUTURES TRENDS

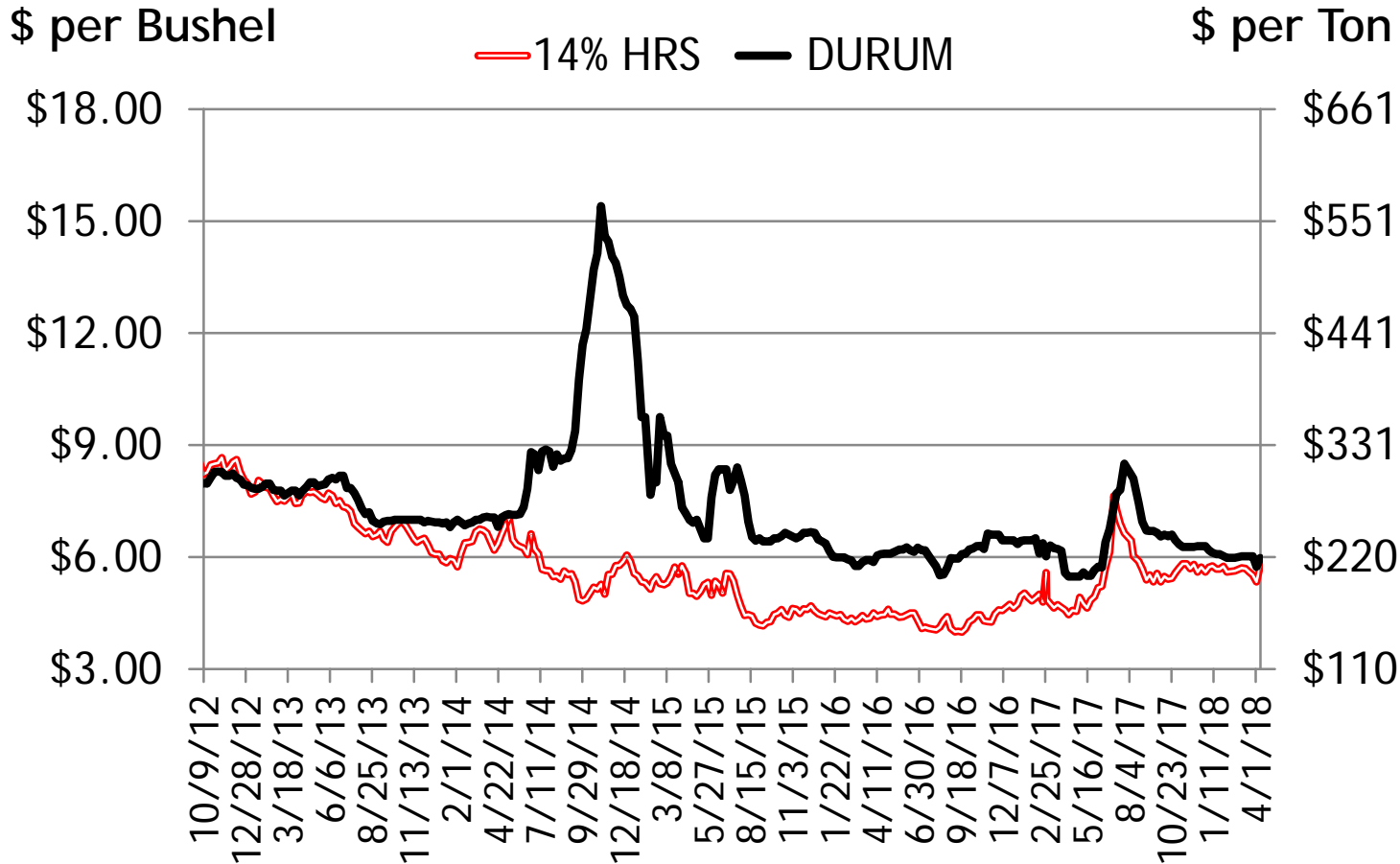
Minneapolis - Hard Red Spring

Kansas City - Hard Red Winter

Chicago - Soft Red Winter - World prices



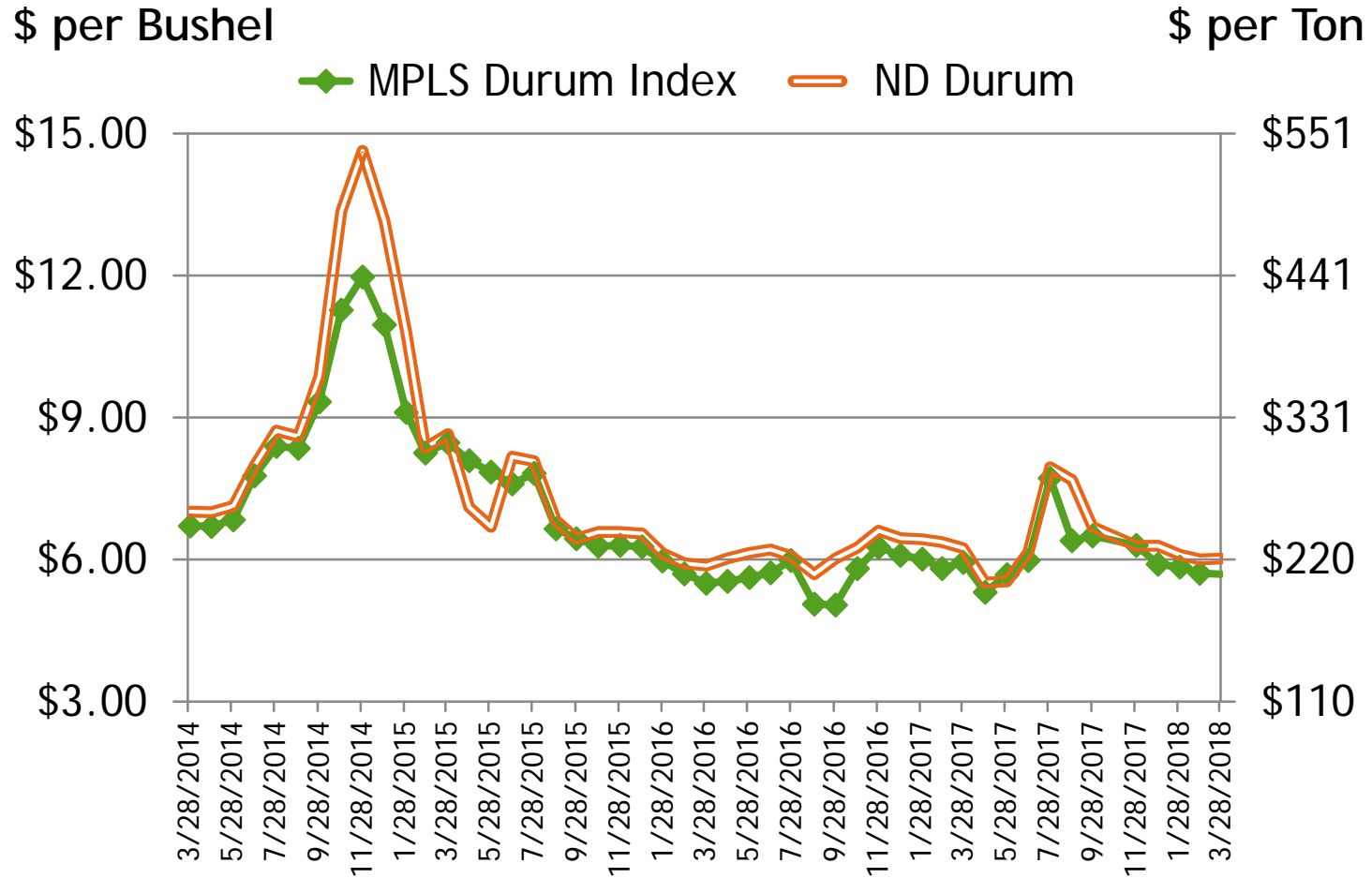
# Average N.D. Hard Red Spring and Durum Wheat Producer Bids



4/9/18

Source: AgWeek weekly prices

# Average N.D. Durum Wheat Prices



3/29/18